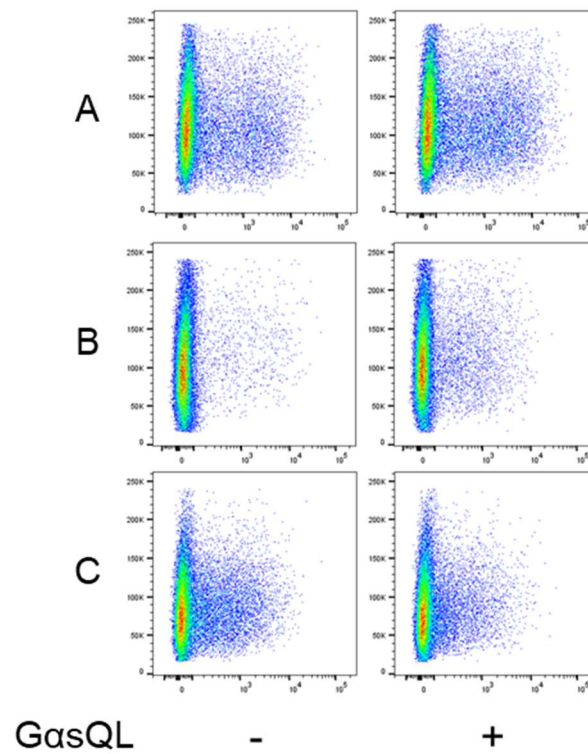


## Supplementary Fig. 1



**Supplementary Fig. 1. Effects of GasQL on NHEJ repair of I-SceI endonuclease – induced DSBs.** The cells (A, SK-MEL-28 cells; B, HeLa cells; C, A549 cells) were cotransfected with GasQL and GFP fluorescent reporter plasmids linearized by I-SceI endonuclease using Lipofectamine 3000, and harvested after 24 h for flow cytometric analysis.