

**A**20 mM TRIS pH 7.4, 50 mM NaCl, 20  $\mu$ M protein

DIC

green (N)

red (hnRNP)

merge

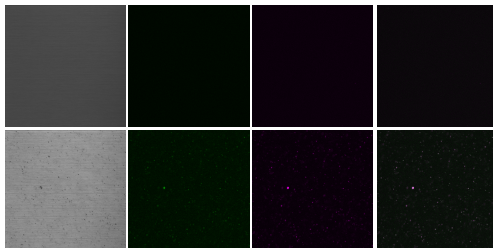
DIC

green (N)

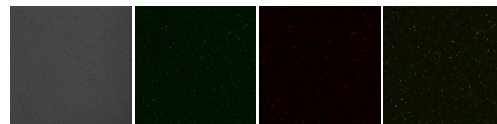
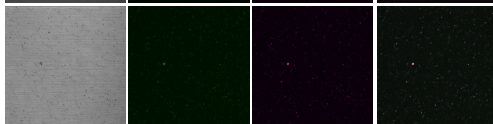
red (hnRNP)

merge

hnRNPA2 FL + N



hnRNPA2 FL + N + TEV

**B**20 mM Hepes pH 7, 150 mM NaCl, 2.5  $\mu$ M protein

DIC

green (N)

red (hnRNP)

merge

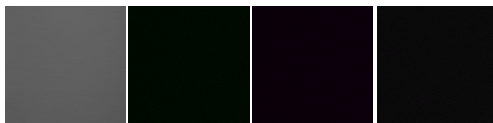
DIC

green (N)

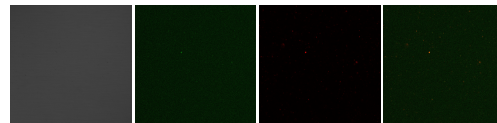
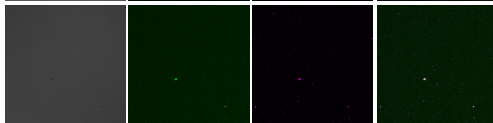
red (hnRNP)

merge

TDP-43 FL + N



TDP-43 FL + N + TEV

**C**20 mM TRIS pH 7.4, 150 mM NaCl, 5  $\mu$ M protein

DIC

green (N)

red (hnRNP)

merge

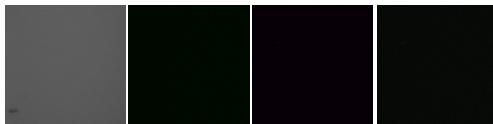
DIC

green (N)

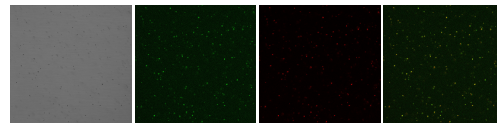
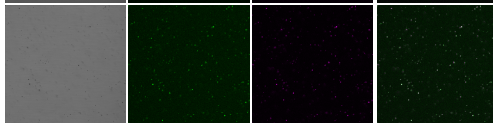
red (hnRNP)

merge

FUS FL + N



FUS FL + N + TEV

—70  $\mu$ m