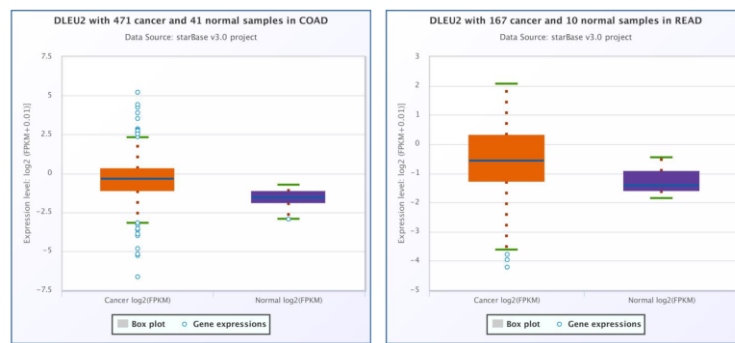
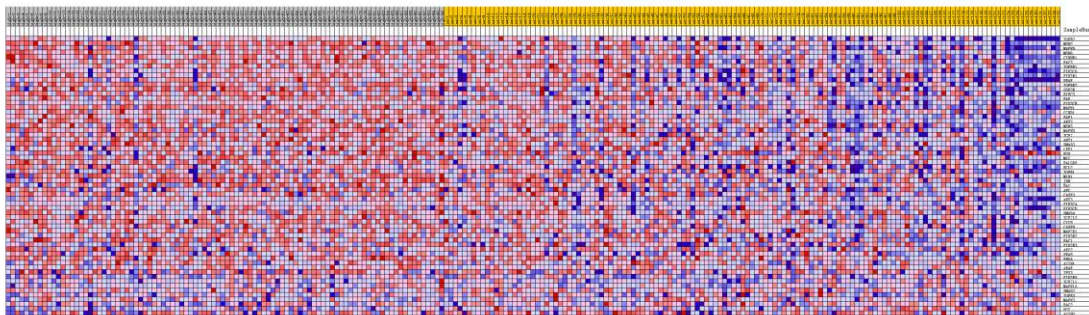


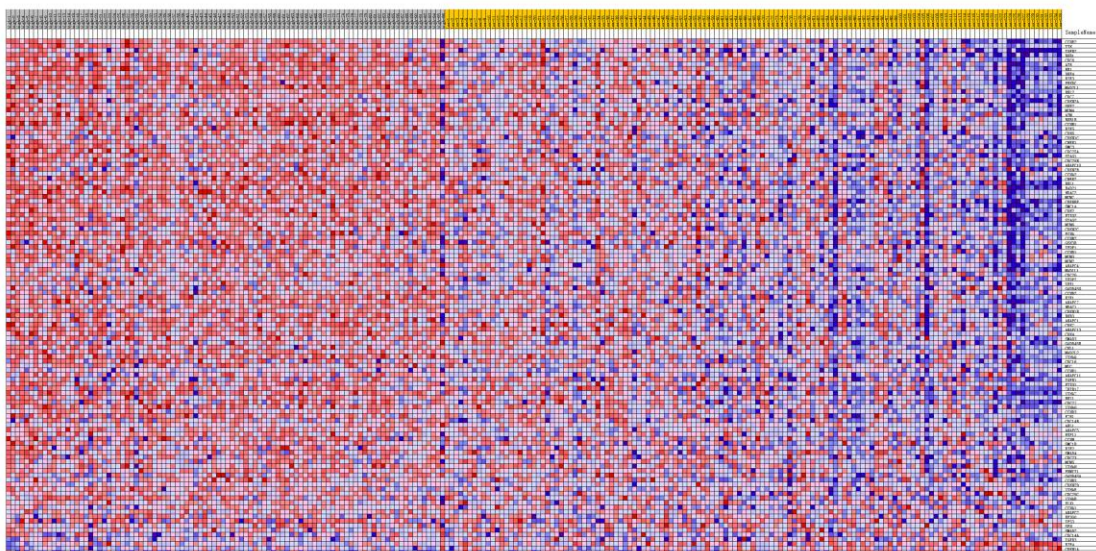
## Supplementary Figures



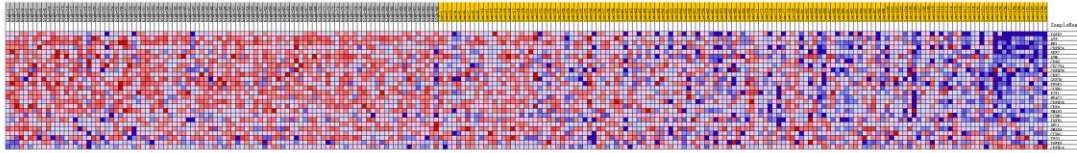
**Supplemental Fig. 1.** The Starbase database was used to analyze the *DLEU2* expression in CRC samples. COAD stands for colon adenocarcinoma and READ for rectal adenocarcinoma.



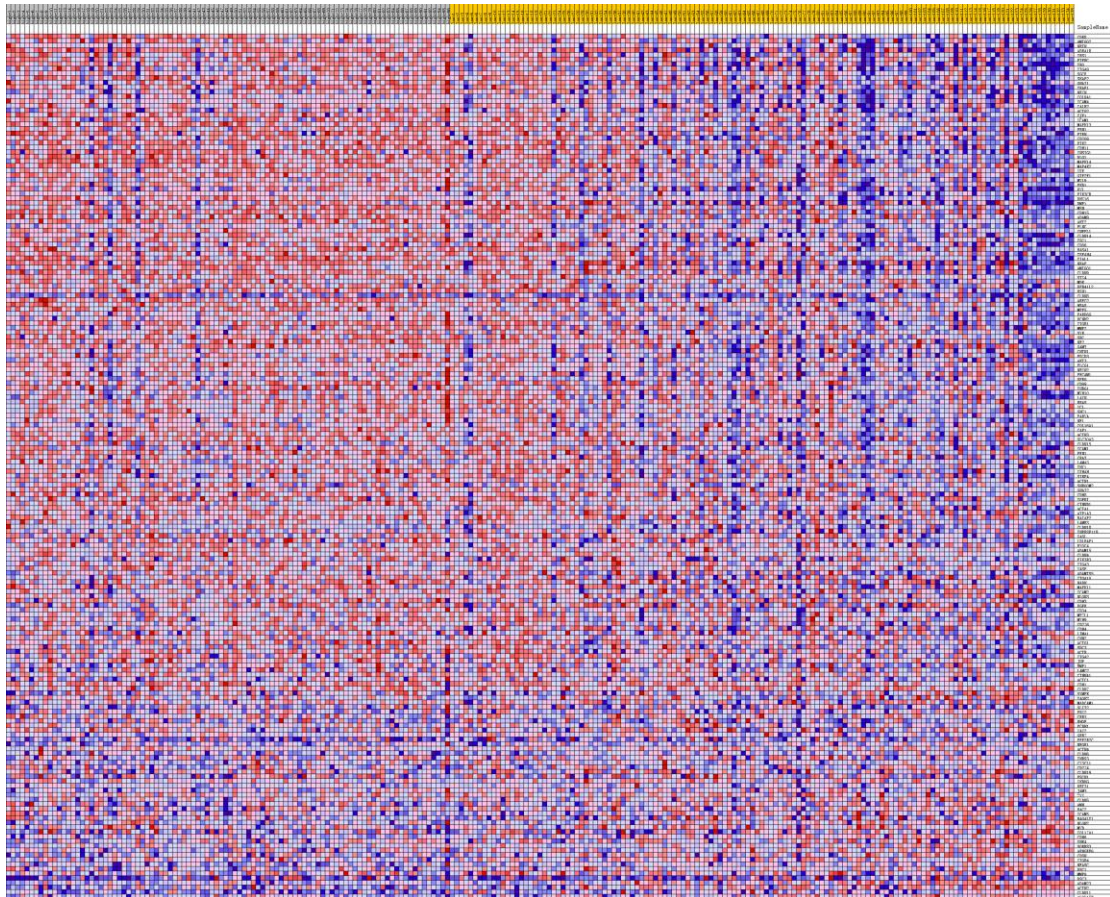
**Supplemental Fig. 2.** The heatmap showed the different genes of “colorectal cancer” gene set between DLEU2<sup>low</sup> and DLEU2<sup>high</sup> groups in GSE17538 dataset by the GSEA analysis.



**Supplemental Fig. 3.** The heatmap showed the different genes of “cell cycle” gene set between DLEU2<sup>low</sup> and DLEU2<sup>high</sup> groups in GSE17538 dataset by the GSEA analysis.



**Supplemental Fig. 4.** The heatmap showed the different genes of “G1 pathway” gene set between DLEU2<sup>low</sup> and DLEU2<sup>high</sup> groups in GSE17538 dataset by the GSEA analysis.



**Supplemental Fig. 5.** The heatmap showed the different genes of “Apical junction signaling” gene set between DLEU2<sup>low</sup> and DLEU2<sup>high</sup> groups in GSE17538 dataset by the GSEA analysis.