

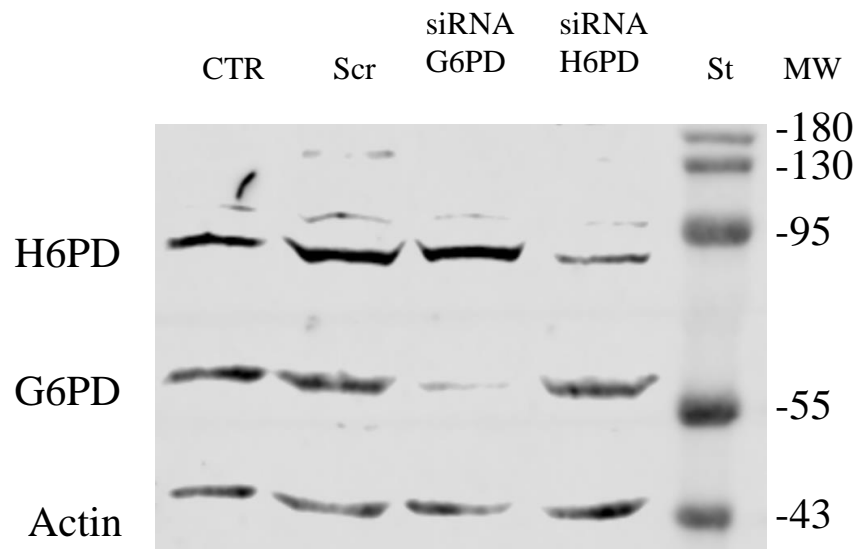
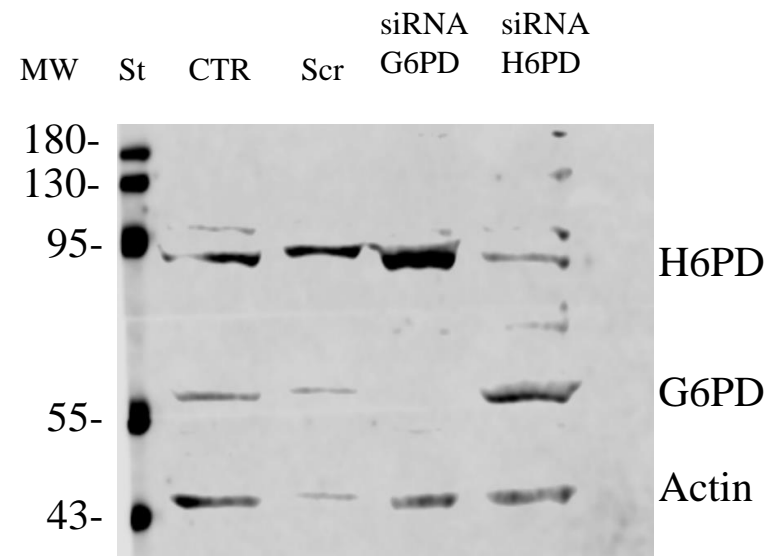
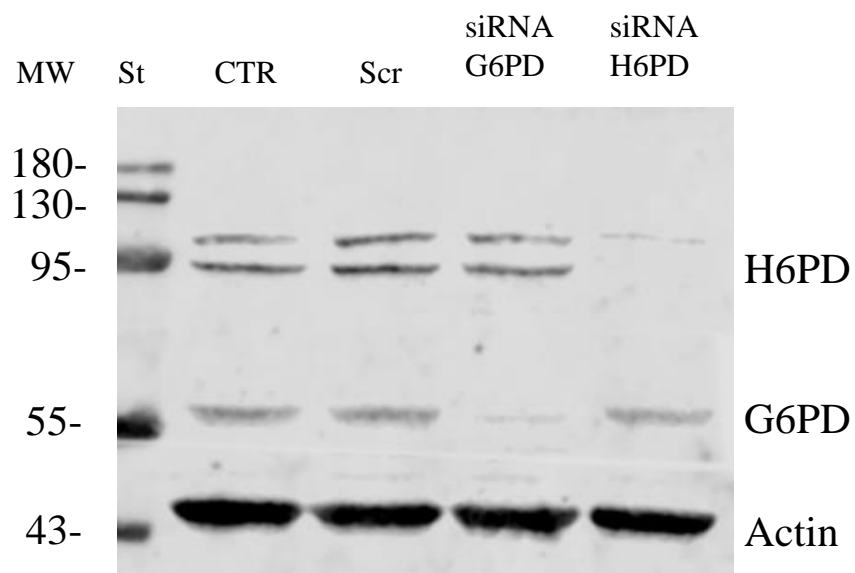
TWO HIGH-RATE PENTOSE-PHOSPHATE PATHWAYS IN CANCER CELLS

Vanessa Cossu, Marcella Bonanomi, Matteo Bauckneht, Silvia Ravera, Nicole Righi, Alberto Miceli, Silvia Morbelli, Anna Maria Orengo, Patrizia Piccioli, Silvia Bruno, Daniela Gaglio, Gianmario Sambuceti, Cecilia Marini.

Supplementary Figure Legend

Supplementary Figure 1. The full-length gels.

Panels a, b and c show the original gels reporting H6PD, G6PD and Actin expression in MCF-7 (a), MDA-MB-231 (b) and A549 (c) cells under control condition (CTR), scramble siRNA (Scr), siRNA G6PD and siRNA H6PD.

a**MCF-7****b****MDA-MB-231****c****A549**

CTR = Control

Sc = Scramble

MW = Molecular weight

St = Standard