

## **Central dopamine D<sub>2</sub> receptors regulate plasma glucose levels in mice through autonomic nerves**

Hiroko Ikeda<sup>1,\*</sup>, Naomi Yonemochi<sup>1</sup>, Risa Mikami<sup>1</sup>, Manabu Abe<sup>2</sup>, Meiko Kawamura<sup>2</sup>, Rie Natsume<sup>2</sup>, Kenji Sakimura<sup>2</sup>, John L. Waddington<sup>3</sup>, Junzo Kamei<sup>1</sup>

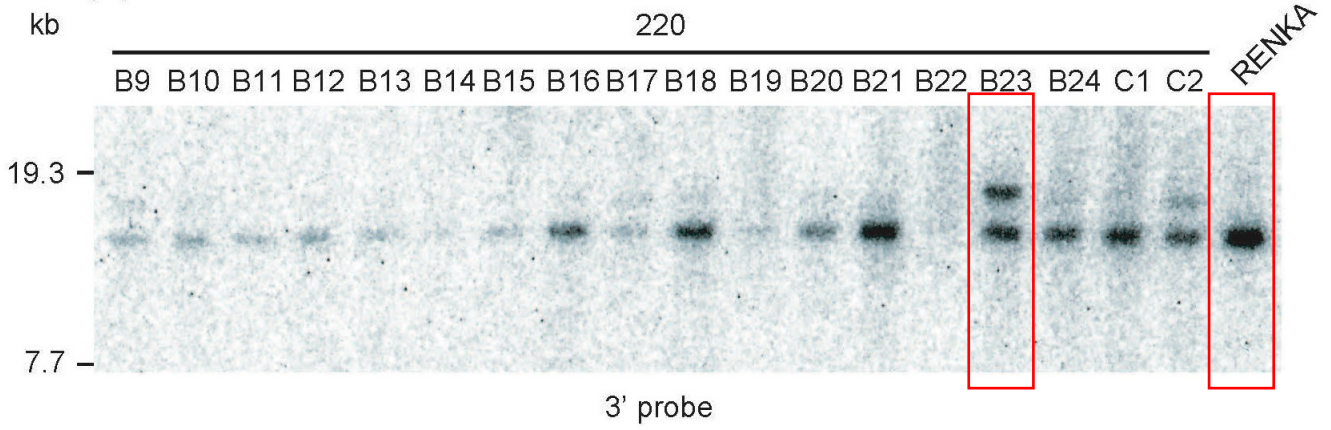
<sup>1</sup>Department of Pathophysiology and Therapeutics, Hoshi University School of Pharmacy and Pharmaceutical Sciences, Tokyo 142-8501, Japan

<sup>2</sup>Department of Neurobiology, Brain Research Institute, Niigata University, Niigata 951-8585, Japan

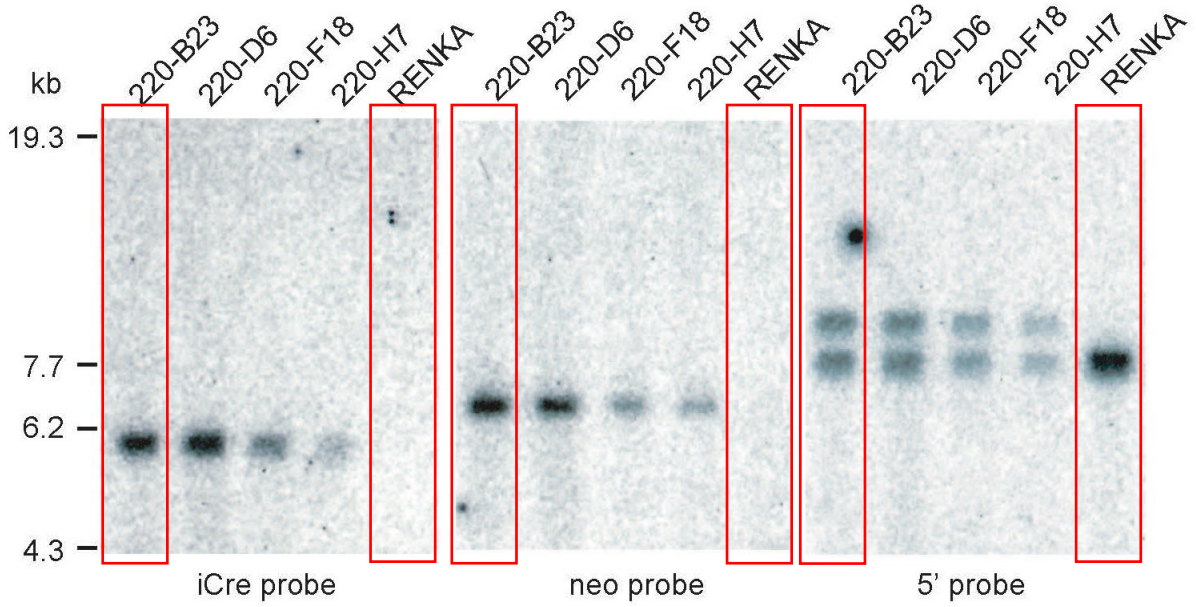
<sup>3</sup>School of Pharmacy and Biomolecular Sciences, Royal College of Surgeons in Ireland, Dublin 2, Ireland

# Supplementary Figure 1

## Full-length data of Figure 6b (left)



## Full-length data of Figure 6b (right)



Supplementary Figure 2

Full-length data of Figure 6c

