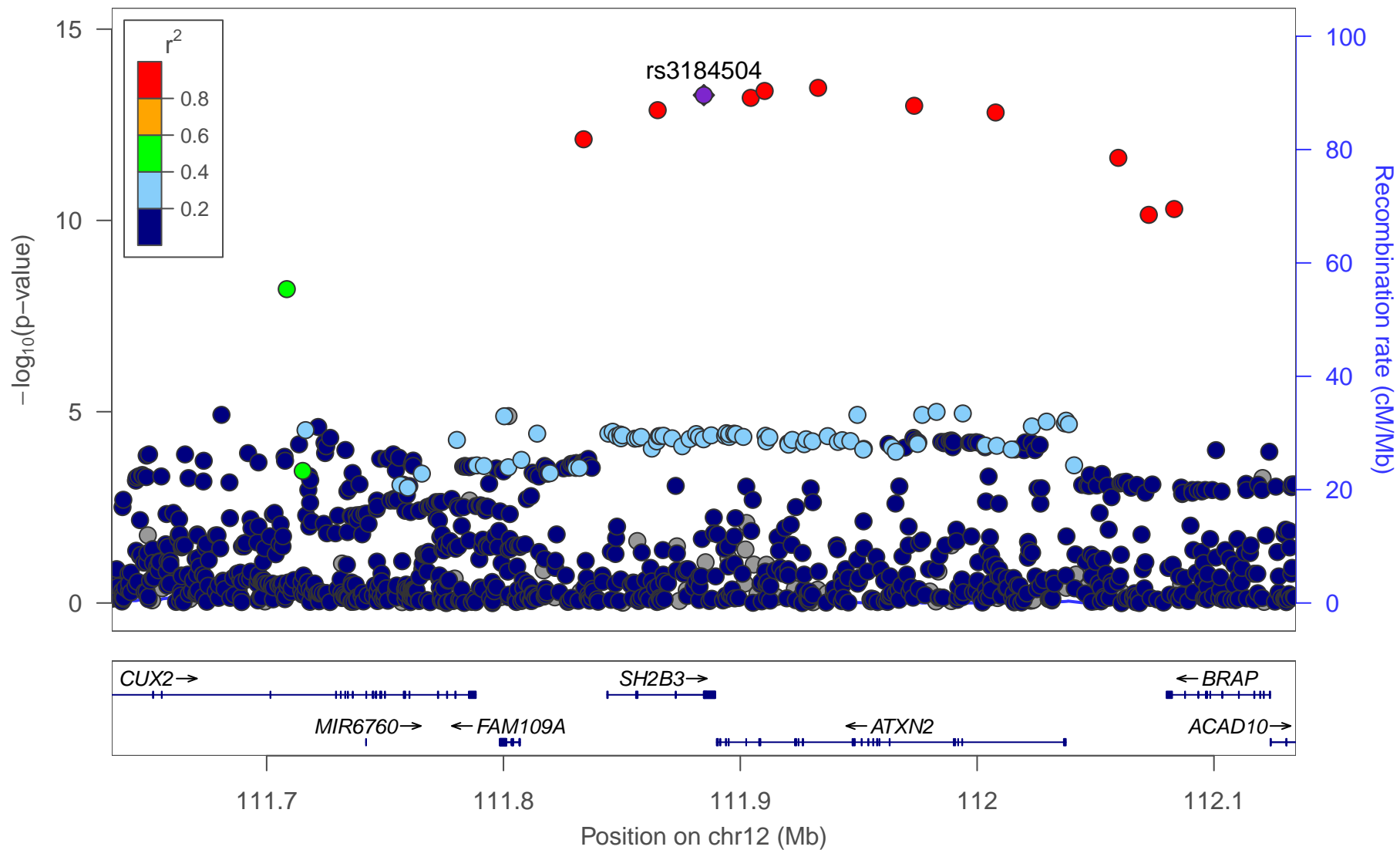


Supplementary Figure 1 SNPs near *SH2B3* associated with combined parents' attained age

Plotted SNPs



Supplementary Table 1 Ten genetic variants in LD with rs3184504 association with combined parents' attained age (Pilling 2017, Aging)

Results available from https://figshare.com/articles/Pilling_et_al_2017_UKB_parents_attained_age_GWAS/5439382

SNP: dnSNP name of genetic marker, if available

CHR: chromosome

BP: base-pair position on CHR (hg19 / b37)

ALLELE1: effect allele

ALLELE0: non-effect allele

A1FREQ: frequency of ALLELE1

BETA: effect size from BOLT-LMM approximation to infinitesimal mixed model

SE: standard error of effect size

P_BOLT_LMM: non-infinitesimal mixed model association test p-value

R2 with rs3184504: from LD Link reference population GBR (British in England and Scotland)

P conditional 1: SNP p-value when adjusted for rs3184504 in the linear regressions model with combined parents age at death

(z-transformed mothers + z-transformed fathers) as the outcome, adjusted for age, sex, assessment center, genotyping array, and PC1-10

P conditional 2: rs3184504 p-value when adjusted for SNP in the linear regressions model with combined parents age at death

(z-transformed mothers + z-transformed fathers) as the outcome, adjusted for age, sex, assessment center, genotyping array, and PC1-10

SNP	CHR	BP	ALLELE1	ALLELE0	A1FREQ	BETA	SE	P_BOLT_LMM	R2 with rs3184504	P conditional 1	P conditional 2
rs3184504	12	111884608	T	C	0.482374	0.016848	0.002239	5.30E-14			
rs10774624	12	111833788	G	A	0.486552	0.016229	0.002261	7.50E-13	0.8941	0.4131	0.1639
rs7310615	12	111865049	C	G	0.482106	0.016699	0.002255	1.30E-13	1	0.7531	0.3157
rs4766578	12	111904371	T	A	0.495617	0.016825	0.002239	6.20E-14	0.957	0.5988	0.2745
rs10774625	12	111910219	A	G	0.496021	0.016935	0.002238	4.10E-14	0.957	0.5043	0.3313
rs7137828	12	111932800	C	T	0.483373	0.017001	0.002241	3.40E-14	1	0.7263	0.3455
rs597808	12	111973358	A	G	0.483653	0.016706	0.002245	1.00E-13	0.9783	0.4603	0.1653
rs653178	12	112007756	C	T	0.483103	0.016546	0.002239	1.50E-13	0.9565	0.2594	0.0733
rs11065979	12	112059557	C	T	0.562141	-0.01586	0.00226	2.30E-12	0.8763	0.3120	0.0427
rs11065987	12	112072424	A	G	0.584649	-0.01479	0.00227	7.10E-11	0.802	0.8485	0.0002
rs11065991	12	112083162	C	T	0.585446	-0.01492	0.002271	5.00E-11	0.802	0.9160	0.0006

Supplementary Table 2 A list of aging traits to associate with rs3184504, summarized for each of the three genotypes, and the power

Category	Trait	TT		CT		CC		ALL		Power
		n	freq. (%) or mean ± SD or median (Q1, Q3)	n	freq. (%) or mean ± SD or median (Q1, Q3)	n	freq. (%) or mean ± SD or median (Q1, Q3)	n	freq. (%) or mean ± SD or median (Q1, Q3)	
Baseline phenotype	Albumin-Creatinine ratio ≥ 3 mg/mmol	85,978	4582 (5.33%)	184,111	9512 (5.17%)	98,715	4955 (5.02%)	368,804	19049 (5.17%)	1.00
Disease	Any cancer excluding non-melanoma cancers	88,394	12037 (13.62%)	189,192	26176 (13.84%)	101,552	14483 (14.26%)	379,138	52696 (13.9%)	1.00
Disease	Any-cause anemia (mild or more severe)	88,393	12559 (14.21%)	189,192	28530 (15.08%)	101,552	16394 (16.14%)	379,137	57483 (15.16%)	1.00
Disease	Asthma	88,394	11131 (12.59%)	189,192	24660 (13.03%)	101,552	13384 (13.18%)	379,138	49175 (12.97%)	1.00
Disease	Atrial Fibrillation	88,394	3305 (3.74%)	189,192	6970 (3.68%)	101,552	3724 (3.67%)	379,138	13999 (3.69%)	1.00
Baseline phenotype	Back pain 3+ months	88,167	15308 (17.36%)	188,774	32395 (17.16%)	101,318	17814 (17.58%)	378,259	65517 (17.32%)	1.00
Disease	Breast cancer (women only)	47,733	2779 (5.82%)	101,697	6106 (6%)	54,774	3497 (6.38%)	204,204	12382 (6.06%)	1.00
Disease	Colorectal Cancer	88,394	1051 (1.19%)	189,192	2299 (1.22%)	101,552	1312 (1.29%)	379,138	4662 (1.23%)	0.81
Disease	COPD	88,394	3036 (3.43%)	189,192	6536 (3.45%)	101,552	3422 (3.37%)	379,138	12994 (3.43%)	1.00
Disease	Coronary heart disease	88,394	7742 (8.76%)	189,192	15866 (8.39%)	101,552	8081 (7.96%)	379,138	31689 (8.36%)	1.00
Baseline phenotype	Depression	69,256	3775 (5.45%)	148,068	8238 (5.56%)	78,974	4367 (5.53%)	296,298	16380 (5.53%)	1.00
Baseline phenotype	Diastolic blood pressure (mm Hg)	82,513	82.63 ± 10.69	176,889	82.17 ± 10.66	95,314	81.84 ± 10.67	354,716	82.19 ± 10.67	1.00
Baseline phenotype	Falls in the last year	88,340	17391 (19.69%)	189,170	37100 (19.61%)	101,527	20175 (19.87%)	379,037	74666 (19.7%)	1.00
Baseline phenotype	FEV1	57,271	2.87 ± 0.76	122,101	2.86 ± 0.76	65,664	2.86 ± 0.76	245,036	2.86 ± 0.76	1.00
Baseline phenotype	FEV1/FVC	57,271	0.76 ± 0.06	122,101	0.76 ± 0.06	65,664	0.76 ± 0.06	245,036	0.76 ± 0.06	1.00
Baseline phenotype	Frailty index - 49 items	73,173	5.25 (3.25, 7.75)	156,363	5.25 (3.25, 7.75)	83,697	5.25 (3.25, 7.75)	313,233	5.25 (3.25, 7.75)	1.00
Baseline phenotype	Fried frailty (=frail)	34,002	1244 (3.66%)	71,980	2605 (3.62%)	38,668	1376 (3.56%)	144,650	5225 (3.61%)	0.88
Baseline phenotype	FVC	57,271	3.78 ± 0.96	122,101	3.78 ± 0.96	65,664	3.77 ± 0.96	245,036	3.78 ± 0.96	1.00
Disease	Heart failure	88,394	1271 (1.44%)	189,192	2593 (1.37%)	101,552	1370 (1.35%)	379,138	5234 (1.38%)	0.87
Baseline phenotype	Heel bone mineral density	50,492	0.54 ± 0.14	108,201	0.54 ± 0.14	57,884	0.54 ± 0.14	216,577	0.54 ± 0.14	1.00
Hematological measure	High basophil count	60,971	1749 (2.87%)	130,228	3581 (2.75%)	69,876	1755 (2.51%)	261,075	7085 (2.71%)	0.97
Hematological measure	High eosinophil count	83,236	480 (0.58%)	176,914	912 (0.52%)	94,205	412 (0.44%)	354,355	1804 (0.51%)	0.24
Hematological measure	High lymphocyte count	85,418	410 (0.48%)	182,972	781 (0.43%)	98,252	334 (0.34%)	366,642	1525 (0.42%)	0.18
Hematological measure	High mean platelet (thrombocyte) volume	83,889	4431 (5.28%)	179,738	9586 (5.33%)	96,625	5105 (5.28%)	360,252	19122 (5.31%)	1.00
Hematological measure	High monocyte count	84,889	271 (0.32%)	181,826	586 (0.32%)	97,599	281 (0.29%)	364,314	1138 (0.31%)	0.11
Hematological measure	High neutrophil count	85,409	3500 (4.1%)	182,886	7092 (3.88%)	98,228	3678 (3.74%)	366,523	14270 (3.89%)	1.00
Hematological measure	High platelet count	81,847	1912 (2.34%)	174,154	3034 (1.74%)	92,808	1352 (1.46%)	348,809	6298 (1.81%)	0.94
Hematological measure	High platelet distribution width	85,816	1186 (1.38%)	183,867	2492 (1.36%)	98,751	1287 (1.3%)	368,434	4965 (1.35%)	0.85
Hematological measure	High red blood cell (erythrocyte) count	79,463	826 (1.04%)	169,470	1570 (0.93%)	90,562	743 (0.82%)	339,495	3139 (0.92%)	0.55
Hematological measure	High red blood cell (erythrocyte) distribution width	84,701	3273 (3.86%)	181,373	7005 (3.86%)	97,474	3742 (3.84%)	363,548	14020 (3.86%)	1.00
Hematological measure	High reticulocyte count	83,601	3555 (4.25%)	178,764	6691 (3.74%)	95,900	3216 (3.35%)	358,265	13462 (3.76%)	1.00
Hematological measure	High white blood cell (leukocyte) count	85,318	6875 (8.06%)	182,629	13189 (7.22%)	97,922	6544 (6.68%)	365,869	26608 (7.27%)	1.00
Baseline phenotype	Hip pain 3+ months	88,258	7772 (8.81%)	188,953	16368 (8.66%)	101,440	8745 (8.62%)	378,651	32885 (8.68%)	1.00
Disease	Hypertension	88,394	29616 (33.5%)	189,192	59943 (31.68%)	101,552	31231 (30.75%)	379,138	120790 (31.86%)	1.00
Disease	Hypothyroidism	88,393	6220 (7.04%)	189,189	10858 (5.74%)	101,550	4909 (4.83%)	379,132	21987 (5.8%)	1.00
Baseline phenotype	Knee pain 3+ months	88,206	14577 (16.53%)	188,840	31257 (16.55%)	101,399	16786 (16.55%)	378,445	62620 (16.55%)	1.00
Baseline phenotype	Low hand grip strength	88,140	10315 (11.7%)	188,731	21748 (11.52%)	101,306	11593 (11.44%)	378,177	43656 (11.54%)	1.00
Hematological measure	Low hemoglobin concentration	85,495	1797 (2.1%)	183,247	3861 (2.11%)	98,408	2239 (2.28%)	367,150	7897 (2.15%)	0.99
Baseline phenotype	Low muscle mass	86,890	35731 (41.12%)	186,113	74870 (40.23%)	99,990	39765 (39.77%)	372,993	150366 (40.31%)	1.00
Disease	Osteoarthritis	88,393	8906 (10.08%)	189,189	19344 (10.22%)	101,550	10370 (10.21%)	379,132	38620 (10.19%)	1.00
Disease	Osteoporosis	88,393	2424 (2.74%)	189,189	5032 (2.66%)	101,550	2599 (2.56%)	379,132	10055 (2.65%)	1.00
Parental extreme longevity	Parents at least one top 1% survival in UK Biobank	16,630	821 (4.94%)	34,776	1820 (5.23%)	18,472	1047 (5.67%)	69,878	3688 (5.28%)	0.69
Disease	Pneumonia	88,394	3094 (3.5%)	189,192	6500 (3.44%)	101,552	3643 (3.59%)	379,138	13237 (3.49%)	1.00
Disease	Prostate cancer (men only)	40,661	1657 (4.08%)	87,495	3497 (4%)	46,778	1897 (4.06%)	174,934	7051 (4.03%)	0.97
Baseline phenotype	Reaction time	87,954	536 (480, 610)	188,295	535 (480, 608)	101,059	535 (477, 606)	377,308	535 (480, 609)	1.00
Disease	Renal failure	88,394	1010 (1.14%)	189,192	2147 (1.13%)	101,552	1054 (1.04%)	379,138	4211 (1.11%)	0.75
Disease	Rheumatoid arthritis	88,393	1533 (1.73%)	189,189	3068 (1.62%)	101,550	1585 (1.56%)	379,132	6186 (1.63%)	0.94
Disease	Stroke	88,394	2525 (2.86%)	189,192	5023 (2.65%)	101,552	2666 (2.63%)	379,138	10214 (2.69%)	1.00
Baseline phenotype	Systolic blood pressure (mm Hg)	82,508	140.4 ± 19.71	176,888	139.86 ± 19.62	95,310	139.6 ± 19.69	354,706	139.91 ± 19.66	1.00
Disease	Type 1 diabetes	88,394	713 (0.81%)	189,192	1286 (0.68%)	101,552	634 (0.62%)	379,138	2633 (0.69%)	0.44
Disease	Type 2 diabetes	88,394	4225 (4.78%)	189,192	8645 (4.57%)	101,552	4553 (4.48%)	379,138	17423 (4.6%)	1.00
Baseline phenotype	Visual memory errors	88,459	3 (2, 6)	189,341	3 (2, 6)	101,616	3 (2, 6)	379,416	3 (2, 6)	1.00

1. freq. (%): frequency and percentage with the status for categorical traits

2. mean ± SD: mean and standard deviation for continuous traits

3. median (Q1, Q3): median, the first and the third quartile for continuous traits that are skewed

4. Power to detect an OR = 1.2 or 0.83 (multiplicative inverse of 1.2) or a SD change = 0.1 or -0.1 at the Bonferroni-corrected level (0.05/52 = 0.00096)

Supplementary Table 3 Association results using all samples, 60 or older, men or women only

Category	Outcome	Effect Size	Estimate	ALL			P	Bonferroni-ac	Estimate	60 or older			P	Estimate	Men only			Estimate	Women only		
				LOWER	UPPER	UPPER				LOWER	UPPER	UPPER			LOWER	UPPER	UPPER		LOWER	UPPER	P
Parental extreme longevity	Parents at least one top 1% survival in UK Biobank	OR	1.08	1.03	1.14	9.06E-04	0.048	NA	NA	NA	NA	NA	NA	NA	NA	NA	NA	NA	NA	NA	
Baseline phenotype	Albumin-Creatinine ratio ≥ 3 mg/mmol	OR	0.97	0.95	0.99	0.003	0.176	0.98	0.96	1.01	0.217	0.97	0.94	1.00	0.036	0.97	0.94	1.00	0.041		
Baseline phenotype	Back pain 3+ months	OR	1.01	1.00	1.02	0.182	1.000	1.02	1.00	1.04	0.054	1.00	0.98	1.02	0.860	1.02	1.00	1.03	0.052		
Baseline phenotype	Depression	OR	1.00	0.98	1.03	0.694	1.000	1.02	0.98	1.06	0.427	0.98	0.94	1.01	0.176	1.02	0.99	1.05	0.105		
Baseline phenotype	Diastolic blood pressure	SD change	-0.037	-0.042	-0.033	3.67E-57	1.9E-55	-0.036	-0.043	-0.029	3.12E-24	-0.036	-0.043	-0.029	5.68E-25	-0.039	-0.045	-0.033	4.01E-34		
Baseline phenotype	Falls in the last year	OR	1.01	1.00	1.02	0.230	1.000	1.01	0.99	1.02	0.483	1.00	0.98	1.02	0.754	1.01	0.99	1.02	0.210		
Baseline phenotype	FEV1	SD change	-0.003	-0.007	0.001	0.185	1.000	-0.006	-0.013	0.000	0.047	-0.001	-0.009	0.006	0.709	-0.005	-0.012	0.001	0.104		
Baseline phenotype	FEV1/FVC	SD change	0.004	-0.001	0.009	0.153	1.000	0.006	-0.002	0.014	0.149	0.005	-0.004	0.013	0.272	0.003	-0.004	0.011	0.359		
Baseline phenotype	Frailty index - 49 items (log-transformed)	SD change	-0.004	-0.009	0.000	0.075	1.000	-0.009	-0.016	-0.001	0.019	-0.009	-0.016	-0.002	0.012	0.000	-0.007	0.006	0.888		
Baseline phenotype	Fried frailty (=frail)	OR	0.98	0.95	1.02	0.413	1.000	0.98	0.95	1.02	0.412	1.00	0.95	1.06	0.884	0.96	0.91	1.02	0.191		
Baseline phenotype	FVC	SD change	-0.004	-0.008	0.000	0.031	1.000	-0.009	-0.015	-0.003	0.003	-0.004	-0.011	0.004	0.356	-0.008	-0.014	-0.001	0.024		
Baseline phenotype	Heel bone mineral density	SD change	-0.006	-0.012	0.000	0.048	1.000	-0.004	-0.012	0.005	0.430	-0.007	-0.016	0.002	0.106	-0.004	-0.012	0.004	0.286		
Baseline phenotype	Hip pain 3+ months	OR	0.99	0.97	1.00	0.141	1.000	0.99	0.97	1.01	0.403	0.99	0.96	1.01	0.328	0.99	0.97	1.01	0.268		
Baseline phenotype	Knee pain 3+ months	OR	1.00	0.99	1.01	0.925	1.000	0.99	0.98	1.01	0.427	1.00	0.98	1.02	0.976	1.00	0.98	1.02	0.938		
Baseline phenotype	Low hand grip strength	OR	0.99	0.97	1.00	0.054	1.000	0.98	0.96	1.00	0.056	0.96	0.94	0.99	0.005	1.00	0.98	1.01	0.599		
Baseline phenotype	Low muscle mass	OR	0.97	0.96	0.98	1.87E-08	9.9E-07	0.98	0.96	0.99	4.53E-04	0.97	0.95	0.98	2.73E-06	0.98	0.97	0.99	7.21E-04		
Baseline phenotype	Reaction time (log transformed)	SD change	-0.012	-0.017	-0.008	9.85E-09	5.2E-07	-0.017	-0.023	-0.010	7.87E-07	-0.013	-0.019	-0.006	9.99E-05	-0.012	-0.018	-0.007	2.50E-05		
Baseline phenotype	Systolic blood pressure	SD change	-0.020	-0.024	-0.015	6.81E-19	3.6E-17	-0.019	-0.026	-0.012	5.10E-08	-0.018	-0.024	-0.011	1.25E-07	-0.022	-0.027	-0.016	4.14E-13		
Baseline phenotype	Visual memory errors (log+1 transformed)	SD change	0.000	-0.004	0.005	0.847	1.000	-0.001	-0.008	0.006	0.793	0.005	-0.002	0.011	0.162	-0.003	-0.009	0.003	0.292		
Hematological measure	High basophil count	OR	0.94	0.91	0.97	1.48E-04	7.8E-03	0.92	0.87	0.97	1.65E-03	0.90	0.85	0.95	1.31E-04	0.96	0.92	1.00	6.08E-02		
Hematological measure	High eosinophil count	OR	0.87	0.82	0.93	3.69E-05	2.0E-03	0.88	0.80	0.98	1.49E-02	0.87	0.80	0.96	3.70E-03	0.87	0.79	0.95	3.40E-03		
Hematological measure	High lymphocyte count	OR	0.84	0.79	0.91	3.23E-06	1.7E-04	0.83	0.76	0.91	7.87E-05	0.91	0.82	1.02	1.01E-01	0.79	0.72	0.87	1.77E-06		
Hematological measure	High mean platelet (thrombocyte) volume	OR	1.00	0.98	1.02	0.978	1.000	1.01	0.98	1.04	0.698	1.02	0.99	1.06	0.162	0.98	0.96	1.01	0.250		
Hematological measure	High monocyte count	OR	0.95	0.87	1.03	0.181	1.000	0.93	0.83	1.03	0.174	0.95	0.85	1.05	0.313	0.94	0.83	1.07	0.374		
Hematological measure	High neutrophil count	OR	0.95	0.93	0.98	9.88E-05	5.2E-03	0.94	0.91	0.98	1.52E-03	0.94	0.90	0.97	9.01E-05	0.97	0.94	1.01	1.21E-01		
Hematological measure	High platelet count	OR	0.78	0.75	0.81	1.30E-42	6.9E-41	0.81	0.76	0.85	4.08E-14	0.85	0.79	0.91	2.44E-06	0.76	0.73	0.79	3.63E-39		
Hematological measure	High platelet distribution width	OR	0.97	0.93	1.01	0.152	1.000	0.95	0.90	1.01	0.080	0.96	0.91	1.01	0.119	0.99	0.93	1.05	0.709		
Hematological measure	High red blood cell (erythrocyte) count	OR	0.88	0.84	0.93	1.18E-06	6.3E-05	0.88	0.82	0.95	8.71E-04	0.89	0.84	0.94	7.61E-06	0.78	0.63	0.98	2.97E-02		
Hematological measure	High red blood cell (erythrocyte) distribution width	OR	1.00	0.97	1.02	0.819	1.000	1.01	0.98	1.05	0.551	1.00	0.96	1.04	0.865	0.99	0.97	1.02	0.713		
Hematological measure	High reticulocyte count	OR	0.88	0.86	0.90	4.01E-24	2.1E-22	0.90	0.86	0.93	1.50E-08	0.87	0.85	0.90	2.44E-18	0.90	0.86	0.93	1.58E-07		
Hematological measure	High white blood cell (leukocyte) count	OR	0.90	0.89	0.92	1.73E-29	9.2E-28	0.90	0.88	0.93	1.29E-14	0.90	0.88	0.93	6.88E-15	0.90	0.88	0.93	4.63E-16		
Hematological measure	Low hemoglobin concentration	OR	1.04	1.01	1.08	0.007	0.386	1.05	1.01	1.10	0.023	1.06	1.01	1.10	0.011	1.03	0.98	1.08	0.224		
Disease	Any cancer excluding non-melanoma cancers	OR	1.03	1.02	1.04	9.49E-06	5.0E-04	1.03	1.02	1.05	6.53E-05	1.01	0.99	1.03	3.23E-01	1.05	1.03	1.06	5.19E-07		
Disease	Any-cause anemia (mild or more severe)	OR	1.09	1.08	1.11	8.62E-37	4.6E-35	1.10	1.08	1.12	3.50E-30	0.97	0.92	1.01	1.68E-01	1.10	1.09	1.12	6.61E-42		
Disease	Asthma	OR	1.02	1.01	1.04	0.001	0.032	1.01	0.99	1.03	0.308	1.03	1.01	1.05	0.003	1.02	1.00	1.04	0.047		
Disease	Atrial Fibrillation	OR	0.99	0.97	1.02	0.471	1.000	0.99	0.97	1.02	0.441	0.99	0.96	1.02	0.478	0.99	0.95	1.04	0.802		
Disease	Breast cancer (women only)	OR	1.05	1.03	1.08	7.44E-05	3.9E-03	1.06	1.03	1.09	1.89E-04	NA	NA	NA	1.05	1.03	1.08	7.44E-05			
Disease	Colorectal Cancer	OR	1.05	1.00	1.09	0.029	1.000	1.04	1.00	1.09	0.079	1.06	1.00	1.12	0.042	1.03	0.97	1.10	0.328		
Disease	COPD	OR	0.99	0.96	1.01	0.348	1.000	0.99	0.96	1.01	0.354	0.97	0.94	1.00	0.069	1.01	0.97	1.05	0.560		
Disease	Coronary heart disease	OR	0.95	0.93	0.96	3.43E-10	1.8E-08	0.94	0.92	0.96	2.37E-11	0.94	0.93	0.96	7.57E-08	0.95	0.93	0.98	1.18E-03		
Disease	Heart failure	OR	0.97	0.93	1.01	0.116	1.000	0.97	0.93	1.01	0.137	0.96	0.92	1.01	0.114	0.98	0.92	1.06	0.652		
Disease	Hypertension	OR	0.94	0.93	0.94	6.90E-39	3.7E-37	0.93	0.92	0.95	2.66E-31	0.93	0.92	0.94	2.41E-22	0.94	0.93	0.95	2.72E-18		
Disease	Hypothyroidism	OR	0.81	0.80	0.83	1.42E-94	7.5E-93	0.81	0.80	0.83	5.21E-75	0.82	0.78	0.86	1.51E-17	0.81	0.80	0.83	8.40E-79		
Disease	Osteoarthritis	OR	1.01	0.99	1.02	0.234	1.000	1.01	0.99	1.02	0.483	1.02	0.99	1.04	0.221	1.01	0.99	1.02	0.604		
Disease	Osteoporosis	OR	0.97	0.94	0.99	0.018	0.928	0.97	0.94	1.00	0.032	0.92	0.86	0.99	0.018	0.98	0.95	1.01	0.130		
Disease	Pneumonia	OR	1.01	0.99	1.04	0.269	1.000	1.01	0.98	1.04	0.459	1.00	0.97	1.03	0.908	1.03	1.00	1.07	0.076		
Disease	Prostate cancer (men only)	OR	1.00	0.97	1.04	0.881	1.000	1.00	0.96	1.03	0.938	1.00	0.97	1.04	0.881	NA	NA	NA	NA		
Disease	Renal failure	OR	0.95	0.91	1.00	0.030	1.000	0.96	0.91	1.00	0.052	0.93	0.88	0.98	0.012	0.98	0.92	1.05	0.640		
Disease	Rheumatoid arthritis	OR	0.95	0.91	0.98	0.003	0.164	0.96	0.92	0.99	0.023	0.97	0.91	1.03	0.313	0.94	0.90	0.98	0.004		
Disease	Stroke	OR	0.96	0.93	0.99	0.004															

Supplementary Table 4 Conditional analyses for associations between aging-related traits and SNPs in SH2B3 using all samples, without and with adjustment for rs3184504

Trait	SNP	CHR	BP	Effect Allele			Effect Size	SNP Effect			Conditional SNP Effect				
				A1	A2	A1FREQ		Estimate	Lower	Upper	P	Estimate	Lower	Upper	P
Any-cause anemia	rs10774624	12	111833788	G	A	0.49	Odds Ratio	1.09	1.07	1.1	1.71E-34	1.02	0.97	1.06	0.461
Any-cause anemia	rs7310615	12	111865049	C	G	0.48	Odds Ratio	1.09	1.08	1.11	9.30E-37	1.04	0.91	1.19	0.556
Any-cause anemia	rs3184504	12	111884608	T	C	0.48	Odds Ratio	1.09	1.08	1.11	8.62E-37	NA	NA	NA	NA
Any-cause anemia	rs4766578	12	111904371	T	A	0.50	Odds Ratio	1.09	1.07	1.1	1.71E-34	0.99	0.94	1.05	0.772
Any-cause anemia	rs10774625	12	111910219	A	G	0.50	Odds Ratio	1.09	1.07	1.1	1.96E-34	0.99	0.94	1.05	0.768
Any-cause anemia	rs7137828	12	111932800	C	T	0.48	Odds Ratio	1.09	1.08	1.11	4.21E-37	1.1	0.94	1.29	0.233
Any-cause anemia	rs597808	12	111973358	A	G	0.48	Odds Ratio	1.09	1.08	1.11	1.22E-36	1.02	0.89	1.18	0.748
Any-cause anemia	rs653178	12	112007756	C	T	0.48	Odds Ratio	1.09	1.08	1.11	1.62E-36	1.01	0.88	1.16	0.917
Any-cause anemia	rs11065979	12	112059557	T	C	0.56	Odds Ratio	1.08	1.07	1.1	4.07E-31	1.01	0.98	1.04	0.674
Any-cause anemia	rs11065987	12	112072424	G	A	0.58	Odds Ratio	1.08	1.06	1.09	2.13E-27	1	0.97	1.03	0.965
Any-cause anemia	rs11065991	12	112083162	T	C	0.59	Odds Ratio	1.08	1.06	1.09	1.37E-27	1	0.97	1.03	0.954
Asthma	rs10774624	12	111833788	G	A	0.49	Odds Ratio	1.02	1.01	1.03	2.77E-03	0.98	0.94	1.02	0.409
Asthma	rs7310615	12	111865049	C	G	0.48	Odds Ratio	1.02	1.01	1.04	4.72E-04	1.06	0.92	1.2	0.428
Asthma	rs3184504	12	111884608	T	C	0.48	Odds Ratio	1.02	1.01	1.04	5.97E-04	NA	NA	NA	NA
Asthma	rs4766578	12	111904371	T	A	0.50	Odds Ratio	1.02	1.01	1.04	1.50E-03	0.98	0.93	1.04	0.487
Asthma	rs10774625	12	111910219	A	G	0.50	Odds Ratio	1.02	1.01	1.04	1.48E-03	0.98	0.93	1.04	0.51
Asthma	rs7137828	12	111932800	C	T	0.48	Odds Ratio	1.02	1.01	1.04	7.56E-04	0.95	0.81	1.11	0.535
Asthma	rs597808	12	111973358	A	G	0.48	Odds Ratio	1.02	1.01	1.04	5.25E-04	1.04	0.9	1.2	0.598
Asthma	rs653178	12	112007756	C	T	0.48	Odds Ratio	1.02	1.01	1.04	4.65E-04	1.06	0.92	1.22	0.39
Asthma	rs11065979	12	112059557	T	C	0.56	Odds Ratio	1.02	1.01	1.04	5.96E-04	1.01	0.98	1.04	0.432
Asthma	rs11065987	12	112072424	G	A	0.58	Odds Ratio	1.03	1.01	1.04	2.15E-04	1.02	0.99	1.05	0.139
Asthma	rs11065991	12	112083162	T	C	0.59	Odds Ratio	1.03	1.01	1.04	2.24E-04	1.02	0.99	1.05	0.145
At least one parent top 1% survival in 1900 US cohort	rs10774624	12	111833788	G	A	0.49	Odds Ratio	1.1	1.04	1.16	1.48E-03	0.93	0.77	1.11	0.404
At least one parent top 1% survival in 1900 US cohort	rs7310615	12	111865049	C	G	0.48	Odds Ratio	1.11	1.05	1.18	2.60E-04	1.12	0.63	1.98	0.707
At least one parent top 1% survival in 1900 US cohort	rs3184504	12	111884608	T	C	0.48	Odds Ratio	1.11	1.05	1.18	2.81E-04	NA	NA	NA	NA
At least one parent top 1% survival in 1900 US cohort	rs4766578	12	111904371	T	A	0.50	Odds Ratio	1.11	1.05	1.17	3.99E-04	1	0.79	1.28	0.981
At least one parent top 1% survival in 1900 US cohort	rs10774625	12	111910219	A	G	0.50	Odds Ratio	1.11	1.05	1.17	4.22E-04	1	0.79	1.27	0.978
At least one parent top 1% survival in 1900 US cohort	rs7137828	12	111932800	C	T	0.48	Odds Ratio	1.11	1.05	1.18	2.88E-04	1.03	0.52	2.04	0.942
At least one parent top 1% survival in 1900 US cohort	rs597808	12	111973358	A	G	0.48	Odds Ratio	1.11	1.05	1.17	4.63E-04	0.71	0.41	1.23	0.226
At least one parent top 1% survival in 1900 US cohort	rs653178	12	112007756	C	T	0.48	Odds Ratio	1.11	1.04	1.17	5.73E-04	0.62	0.36	1.05	0.074
At least one parent top 1% survival in 1900 US cohort	rs11065979	12	112059557	T	C	0.56	Odds Ratio	1.12	1.06	1.19	7.50E-05	1.11	0.98	1.27	0.105
At least one parent top 1% survival in 1900 US cohort	rs11065987	12	112072424	G	A	0.58	Odds Ratio	1.13	1.06	1.19	6.20E-05	1.11	0.99	1.24	0.076
At least one parent top 1% survival in 1900 US cohort	rs11065991	12	112083162	T	C	0.59	Odds Ratio	1.13	1.07	1.2	2.70E-05	1.13	1.01	1.26	0.031
At least one parent top 1% survival in UK Biobank	rs10774624	12	111833788	G	A	0.49	Odds Ratio	1.05	1.03	1.07	2.85E-09	1.02	0.96	1.07	0.56
At least one parent top 1% survival in UK Biobank	rs7310615	12	111865049	C	G	0.48	Odds Ratio	1.05	1.03	1.07	3.45E-09	0.9	0.77	1.06	0.198
At least one parent top 1% survival in UK Biobank	rs3184504	12	111884608	T	C	0.48	Odds Ratio	1.05	1.03	1.07	1.29E-09	NA	NA	NA	NA
At least one parent top 1% survival in UK Biobank	rs4766578	12	111904371	T	A	0.50	Odds Ratio	1.05	1.03	1.07	1.17E-09	1.03	0.96	1.1	0.43
At least one parent top 1% survival in UK Biobank	rs10774625	12	111910219	A	G	0.50	Odds Ratio	1.05	1.03	1.07	1.03E-09	1.03	0.96	1.1	0.376
At least one parent top 1% survival in UK Biobank	rs7137828	12	111932800	C	T	0.48	Odds Ratio	1.05	1.03	1.07	1.05E-09	1.07	0.88	1.29	0.517
At least one parent top 1% survival in UK Biobank	rs597808	12	111973358	A	G	0.48	Odds Ratio	1.05	1.03	1.07	1.70E-09	0.98	0.82	1.17	0.836
At least one parent top 1% survival in UK Biobank	rs653178	12	112007756	C	T	0.48	Odds Ratio	1.05	1.03	1.07	3.27E-09	0.9	0.76	1.06	0.198
At least one parent top 1% survival in UK Biobank	rs11065979	12	112059557	T	C	0.56	Odds Ratio	1.06	1.04	1.07	3.68E-11	1.05	1.01	1.09	0.008
At least one parent top 1% survival in UK Biobank	rs11065987	12	112072424	G	A	0.58	Odds Ratio	1.05	1.03	1.07	5.60E-09	1.02	0.99	1.05	0.223
At least one parent top 1% survival in UK Biobank	rs11065991	12	112083162	T	C	0.59	Odds Ratio	1.05	1.03	1.07	2.17E-09	1.02	0.99	1.06	0.126
Breast cancer (women only)	rs10774624	12	111833788	G	A	0.49	Odds Ratio	1.05	1.02	1.08	4.09E-04	0.97	0.9	1.05	0.485
Breast cancer (women only)	rs7310615	12	111865049	C	G	0.48	Odds Ratio	1.05	1.03	1.08	1.25E-04	0.87	0.68	1.13	0.297
Breast cancer (women only)	rs3184504	12	111884608	T	C	0.48	Odds Ratio	1.05	1.03	1.08	7.44E-05	NA	NA	NA	NA
Breast cancer (women only)	rs4766578	12	111904371	T	A	0.50	Odds Ratio	1.05	1.03	1.08	1.14E-04	1	0.9	1.12	0.973
Breast cancer (women only)	rs10774625	12	111910219	A	G	0.50	Odds Ratio	1.05	1.03	1.08	1.05E-04	1.01	0.9	1.12	0.896
Breast cancer (women only)	rs7137828	12	111932800	C	T	0.48	Odds Ratio	1.05	1.03	1.08	6.04E-05	1.13	0.82	1.54	0.453

Breast cancer (women only)	rs597808	12	111973358	A	G	0.48	Odds Ratio	1.06	1.03	1.08	3.86E-05	1.29	0.98	1.71	0.074
Breast cancer (women only)	rs653178	12	112007756	C	T	0.48	Odds Ratio	1.05	1.03	1.08	5.38E-05	1.14	0.87	1.49	0.328
Breast cancer (women only)	rs11065979	12	112059557	T	C	0.56	Odds Ratio	1.06	1.03	1.09	2.23E-05	1.05	0.99	1.11	0.118
Breast cancer (women only)	rs11065987	12	112072424	G	A	0.58	Odds Ratio	1.05	1.03	1.08	1.02E-04	1.03	0.97	1.08	0.339
Breast cancer (women only)	rs11065991	12	112083162	T	C	0.59	Odds Ratio	1.05	1.03	1.08	1.33E-04	1.02	0.97	1.08	0.406
Cancer	rs10774624	12	111833788	G	A	0.49	Odds Ratio	1.03	1.01	1.04	1.14E-04	0.98	0.94	1.02	0.286
Cancer	rs7310615	12	111865049	C	G	0.48	Odds Ratio	1.03	1.02	1.04	1.07E-05	1	0.88	1.14	0.977
Cancer	rs3184504	12	111884608	T	C	0.48	Odds Ratio	1.03	1.02	1.04	9.49E-06	NA	NA	NA	NA
Cancer	rs4766578	12	111904371	T	A	0.50	Odds Ratio	1.03	1.02	1.04	6.59E-06	1.02	0.97	1.08	0.393
Cancer	rs10774625	12	111910219	A	G	0.50	Odds Ratio	1.03	1.02	1.04	6.98E-06	1.02	0.97	1.08	0.42
Cancer	rs7137828	12	111932800	C	T	0.48	Odds Ratio	1.03	1.02	1.04	9.39E-06	1.02	0.87	1.19	0.83
Cancer	rs597808	12	111973358	A	G	0.48	Odds Ratio	1.03	1.02	1.04	1.31E-05	0.96	0.84	1.11	0.606
Cancer	rs653178	12	112007756	C	T	0.48	Odds Ratio	1.03	1.02	1.04	1.10E-05	0.99	0.87	1.14	0.909
Cancer	rs11065979	12	112059557	T	C	0.56	Odds Ratio	1.03	1.02	1.05	2.12E-06	1.03	1	1.06	0.082
Cancer	rs11065987	12	112072424	G	A	0.58	Odds Ratio	1.03	1.01	1.04	3.86E-05	1.01	0.98	1.03	0.534
Cancer	rs11065991	12	112083162	T	C	0.59	Odds Ratio	1.03	1.01	1.04	5.71E-05	1.01	0.98	1.03	0.652
Coronary heart disease	rs10774624	12	111833788	G	A	0.49	Odds Ratio	0.95	0.93	0.96	1.25E-10	0.96	0.91	1.01	0.131
Coronary heart disease	rs7310615	12	111865049	C	G	0.48	Odds Ratio	0.95	0.93	0.96	3.02E-10	0.96	0.81	1.13	0.608
Coronary heart disease	rs3184504	12	111884608	T	C	0.48	Odds Ratio	0.95	0.93	0.96	3.43E-10	NA	NA	NA	NA
Coronary heart disease	rs4766578	12	111904371	T	A	0.50	Odds Ratio	0.95	0.93	0.96	1.52E-10	0.95	0.89	1.02	0.196
Coronary heart disease	rs10774625	12	111910219	A	G	0.50	Odds Ratio	0.95	0.93	0.96	1.96E-10	0.96	0.89	1.03	0.259
Coronary heart disease	rs7137828	12	111932800	C	T	0.48	Odds Ratio	0.95	0.93	0.96	2.01E-10	0.88	0.73	1.07	0.21
Coronary heart disease	rs597808	12	111973358	A	G	0.48	Odds Ratio	0.95	0.93	0.96	1.70E-10	0.88	0.74	1.05	0.149
Coronary heart disease	rs653178	12	112007756	C	T	0.48	Odds Ratio	0.95	0.93	0.96	2.65E-10	0.94	0.79	1.12	0.474
Coronary heart disease	rs11065979	12	112059557	T	C	0.56	Odds Ratio	0.95	0.94	0.97	4.04E-08	1.01	0.97	1.05	0.695
Coronary heart disease	rs11065987	12	112072424	G	A	0.58	Odds Ratio	0.95	0.94	0.97	3.96E-08	1	0.96	1.03	0.83
Coronary heart disease	rs11065991	12	112083162	T	C	0.59	Odds Ratio	0.95	0.94	0.97	2.86E-08	0.99	0.96	1.03	0.738
Diastolic blood pressure	rs10774624	12	111833788	G	A	0.49	Odds Ratio	-0.04	-0.04	-0.03	6.40E-50	0.01	-0.01	0.02	0.431
Diastolic blood pressure	rs7310615	12	111865049	C	G	0.48	Odds Ratio	-0.04	-0.04	-0.03	1.96E-56	0	-0.04	0.05	0.832
Diastolic blood pressure	rs3184504	12	111884608	T	C	0.48	Odds Ratio	-0.04	-0.04	-0.03	3.67E-57	NA	NA	NA	NA
Diastolic blood pressure	rs4766578	12	111904371	T	A	0.50	Odds Ratio	-0.04	-0.04	-0.03	4.47E-58	-0.02	-0.04	0	0.015
Diastolic blood pressure	rs10774625	12	111910219	A	G	0.50	Odds Ratio	-0.04	-0.04	-0.03	4.30E-58	-0.02	-0.04	-0.01	0.013
Diastolic blood pressure	rs7137828	12	111932800	C	T	0.48	Odds Ratio	-0.04	-0.04	-0.03	1.19E-56	0.01	-0.05	0.06	0.834
Diastolic blood pressure	rs597808	12	111973358	A	G	0.48	Odds Ratio	-0.04	-0.04	-0.03	8.38E-57	-0.01	-0.05	0.04	0.826
Diastolic blood pressure	rs653178	12	112007756	C	T	0.48	Odds Ratio	-0.04	-0.04	-0.03	2.13E-56	0.01	-0.04	0.06	0.727
Diastolic blood pressure	rs11065979	12	112059557	T	C	0.56	Odds Ratio	-0.03	-0.04	-0.03	6.00E-43	0.01	0	0.02	0.149
Diastolic blood pressure	rs11065987	12	112072424	G	A	0.58	Odds Ratio	-0.03	-0.03	-0.02	9.81E-34	0.01	0	0.02	0.003
Diastolic blood pressure	rs11065991	12	112083162	T	C	0.59	Odds Ratio	-0.03	-0.03	-0.02	1.10E-33	0.01	0	0.02	0.003
High basophil count	rs10774624	12	111833788	G	A	0.49	Odds Ratio	0.93	0.9	0.97	1.00E-04	0.95	0.86	1.06	0.356
High basophil count	rs7310615	12	111865049	C	G	0.48	Odds Ratio	0.93	0.9	0.97	9.32E-05	0.81	0.58	1.11	0.192
High basophil count	rs3184504	12	111884608	T	C	0.48	Odds Ratio	0.94	0.91	0.97	1.48E-04	NA	NA	NA	NA
High basophil count	rs4766578	12	111904371	T	A	0.50	Odds Ratio	0.94	0.91	0.97	1.44E-04	0.97	0.84	1.11	0.628
High basophil count	rs10774625	12	111910219	A	G	0.50	Odds Ratio	0.94	0.91	0.97	2.05E-04	0.99	0.86	1.15	0.916
High basophil count	rs7137828	12	111932800	C	T	0.48	Odds Ratio	0.94	0.91	0.97	2.26E-04	1.28	0.83	1.96	0.262
High basophil count	rs597808	12	111973358	A	G	0.48	Odds Ratio	0.94	0.91	0.97	1.45E-04	0.96	0.68	1.36	0.812
High basophil count	rs653178	12	112007756	C	T	0.48	Odds Ratio	0.94	0.91	0.97	1.77E-04	1.05	0.74	1.48	0.784
High basophil count	rs11065979	12	112059557	T	C	0.56	Odds Ratio	0.94	0.91	0.97	2.24E-04	0.98	0.9	1.05	0.536
High basophil count	rs11065987	12	112072424	G	A	0.58	Odds Ratio	0.95	0.92	0.98	1.93E-03	1.01	0.95	1.08	0.779
High basophil count	rs11065991	12	112083162	T	C	0.59	Odds Ratio	0.95	0.92	0.98	2.37E-03	1.01	0.95	1.08	0.697
High eosinophil count	rs10774624	12	111833788	G	A	0.49	Odds Ratio	0.88	0.82	0.94	1.12E-04	1.02	0.82	1.25	0.874
High eosinophil count	rs7310615	12	111865049	C	G	0.48	Odds Ratio	0.87	0.81	0.93	3.85E-05	0.96	0.5	1.85	0.911
High eosinophil count	rs3184504	12	111884608	T	C	0.48	Odds Ratio	0.87	0.82	0.93	3.69E-05	NA	NA	NA	NA
High eosinophil count	rs4766578	12	111904371	T	A	0.50	Odds Ratio	0.88	0.82	0.94	8.79E-05	1.06	0.79	1.43	0.692

High eosinophill count	rs10774625	12	111910219	A	G	0.50	Odds Ratio	0.88	0.82	0.94	9.31E-05	1.07	0.8	1.43	0.661
High eosinophill count	rs7137828	12	111932800	C	T	0.48	Odds Ratio	0.87	0.81	0.93	2.50E-05	0.64	0.32	1.28	0.208
High eosinophill count	rs597808	12	111973358	A	G	0.48	Odds Ratio	0.87	0.82	0.93	3.73E-05	0.94	0.47	1.88	0.864
High eosinophill count	rs653178	12	112007756	C	T	0.48	Odds Ratio	0.87	0.82	0.93	3.52E-05	0.9	0.46	1.76	0.754
High eosinophill count	rs11065979	12	112059557	T	C	0.56	Odds Ratio	0.9	0.84	0.96	1.42E-03	1.09	0.94	1.26	0.236
High eosinophill count	rs11065987	12	112072424	G	A	0.58	Odds Ratio	0.91	0.85	0.97	3.16E-03	1.07	0.95	1.21	0.275
High eosinophill count	rs11065991	12	112083162	T	C	0.59	Odds Ratio	0.91	0.85	0.97	3.53E-03	1.07	0.95	1.21	0.251
High lymphocyte count	rs10774624	12	111833788	G	A	0.49	Odds Ratio	0.84	0.78	0.91	3.24E-06	0.92	0.73	1.15	0.448
High lymphocyte count	rs7310615	12	111865049	C	G	0.48	Odds Ratio	0.84	0.78	0.9	2.18E-06	0.69	0.35	1.37	0.292
High lymphocyte count	rs3184504	12	111884608	T	C	0.48	Odds Ratio	0.84	0.79	0.91	3.23E-06	NA	NA	NA	NA
High lymphocyte count	rs4766578	12	111904371	T	A	0.50	Odds Ratio	0.85	0.79	0.91	5.77E-06	0.99	0.72	1.37	0.975
High lymphocyte count	rs10774625	12	111910219	A	G	0.50	Odds Ratio	0.85	0.79	0.91	6.86E-06	1.02	0.74	1.4	0.906
High lymphocyte count	rs7137828	12	111932800	C	T	0.48	Odds Ratio	0.85	0.79	0.91	4.78E-06	1.48	0.57	3.86	0.422
High lymphocyte count	rs597808	12	111973358	A	G	0.48	Odds Ratio	0.84	0.79	0.91	3.16E-06	0.9	0.43	1.89	0.78
High lymphocyte count	rs653178	12	112007756	C	T	0.48	Odds Ratio	0.85	0.79	0.91	4.75E-06	1.26	0.6	2.67	0.544
High lymphocyte count	rs11065979	12	112059557	T	C	0.56	Odds Ratio	0.87	0.81	0.93	8.61E-05	1.05	0.9	1.23	0.541
High lymphocyte count	rs11065987	12	112072424	G	A	0.58	Odds Ratio	0.88	0.82	0.95	5.86E-04	1.07	0.94	1.23	0.295
High lymphocyte count	rs11065991	12	112083162	T	C	0.59	Odds Ratio	0.88	0.82	0.95	8.17E-04	1.08	0.95	1.24	0.228
High neutrophill count	rs10774624	12	111833788	G	A	0.49	Odds Ratio	0.96	0.94	0.98	5.47E-04	1.03	0.95	1.11	0.456
High neutrophill count	rs7310615	12	111865049	C	G	0.48	Odds Ratio	0.96	0.93	0.98	1.80E-04	1.16	0.92	1.48	0.209
High neutrophill count	rs3184504	12	111884608	T	C	0.48	Odds Ratio	0.95	0.93	0.98	9.88E-05	NA	NA	NA	NA
High neutrophill count	rs4766578	12	111904371	T	A	0.50	Odds Ratio	0.96	0.94	0.98	5.49E-04	1.08	0.97	1.2	0.155
High neutrophill count	rs10774625	12	111910219	A	G	0.50	Odds Ratio	0.96	0.94	0.98	5.40E-04	1.08	0.97	1.19	0.169
High neutrophill count	rs7137828	12	111932800	C	T	0.48	Odds Ratio	0.96	0.93	0.98	2.23E-04	1.43	1.05	1.96	0.024
High neutrophill count	rs597808	12	111973358	A	G	0.48	Odds Ratio	0.96	0.93	0.98	2.29E-04	1.31	1.01	1.71	0.044
High neutrophill count	rs653178	12	112007756	C	T	0.48	Odds Ratio	0.96	0.93	0.98	2.97E-04	1.41	1.1	1.81	0.007
High neutrophill count	rs11065979	12	112059557	T	C	0.56	Odds Ratio	0.96	0.94	0.99	2.57E-03	1.03	0.98	1.09	0.258
High neutrophill count	rs11065987	12	112072424	G	A	0.58	Odds Ratio	0.97	0.94	0.99	6.47E-03	1.03	0.98	1.08	0.238
High neutrophill count	rs11065991	12	112083162	T	C	0.59	Odds Ratio	0.97	0.94	0.99	5.35E-03	1.02	0.98	1.07	0.294
High platelet count	rs10774624	12	111833788	G	A	0.49	Odds Ratio	0.79	0.77	0.82	1.12E-36	1.06	0.95	1.19	0.295
High platelet count	rs7310615	12	111865049	C	G	0.48	Odds Ratio	0.78	0.75	0.81	2.25E-42	0.95	0.66	1.35	0.765
High platelet count	rs3184504	12	111884608	T	C	0.48	Odds Ratio	0.78	0.75	0.81	1.30E-42	NA	NA	NA	NA
High platelet count	rs4766578	12	111904371	T	A	0.50	Odds Ratio	0.79	0.76	0.82	1.38E-38	1.13	0.95	1.33	0.16
High platelet count	rs10774625	12	111910219	A	G	0.50	Odds Ratio	0.79	0.76	0.82	2.75E-38	1.14	0.97	1.35	0.113
High platelet count	rs7137828	12	111932800	C	T	0.48	Odds Ratio	0.78	0.75	0.81	1.86E-42	0.94	0.61	1.44	0.777
High platelet count	rs597808	12	111973358	A	G	0.48	Odds Ratio	0.78	0.75	0.81	9.33E-42	1.19	0.81	1.77	0.378
High platelet count	rs653178	12	112007756	C	T	0.48	Odds Ratio	0.78	0.76	0.81	1.12E-41	1.21	0.83	1.76	0.323
High platelet count	rs11065979	12	112059557	T	C	0.56	Odds Ratio	0.81	0.78	0.83	5.80E-33	1.03	0.96	1.12	0.412
High platelet count	rs11065987	12	112072424	G	A	0.58	Odds Ratio	0.82	0.79	0.85	6.74E-28	1.05	0.98	1.12	0.152
High platelet count	rs11065991	12	112083162	T	C	0.59	Odds Ratio	0.82	0.79	0.85	1.34E-27	1.05	0.99	1.12	0.129
High red blood cell (erythrocyte) count	rs10774624	12	111833788	G	A	0.49	Odds Ratio	0.88	0.84	0.93	1.80E-06	0.96	0.82	1.12	0.599
High red blood cell (erythrocyte) count	rs7310615	12	111865049	C	G	0.48	Odds Ratio	0.88	0.84	0.93	1.95E-06	1.21	0.73	2.01	0.455
High red blood cell (erythrocyte) count	rs3184504	12	111884608	T	C	0.48	Odds Ratio	0.88	0.84	0.93	1.18E-06	NA	NA	NA	NA
High red blood cell (erythrocyte) count	rs4766578	12	111904371	T	A	0.50	Odds Ratio	0.88	0.84	0.93	1.18E-06	0.94	0.75	1.16	0.554
High red blood cell (erythrocyte) count	rs10774625	12	111910219	A	G	0.50	Odds Ratio	0.88	0.84	0.93	1.06E-06	0.93	0.75	1.15	0.489
High red blood cell (erythrocyte) count	rs7137828	12	111932800	C	T	0.48	Odds Ratio	0.88	0.84	0.93	1.29E-06	1	0.54	1.85	0.994
High red blood cell (erythrocyte) count	rs597808	12	111973358	A	G	0.48	Odds Ratio	0.88	0.84	0.93	1.22E-06	0.96	0.56	1.62	0.865
High red blood cell (erythrocyte) count	rs653178	12	112007756	C	T	0.48	Odds Ratio	0.89	0.84	0.93	2.03E-06	1.27	0.75	2.14	0.375
High red blood cell (erythrocyte) count	rs11065979	12	112059557	T	C	0.56	Odds Ratio	0.9	0.86	0.95	7.88E-05	1.06	0.95	1.18	0.332
High red blood cell (erythrocyte) count	rs11065987	12	112072424	G	A	0.58	Odds Ratio	0.92	0.87	0.96	6.79E-04	1.07	0.98	1.18	0.145
High red blood cell (erythrocyte) count	rs11065991	12	112083162	T	C	0.59	Odds Ratio	0.91	0.87	0.96	4.79E-04	1.06	0.97	1.17	0.206
High reticulocyte count	rs10774624	12	111833788	G	A	0.49	Odds Ratio	0.88	0.86	0.9	1.25E-23	0.95	0.88	1.03	0.193
High reticulocyte count	rs7310615	12	111865049	C	G	0.48	Odds Ratio	0.88	0.86	0.9	4.29E-24	0.95	0.74	1.21	0.65

High reticulocyte count	rs3184504	12	111884608	T	C	0.48	Odds Ratio	0.88	0.86	0.9	4.01E-24	NA	NA	NA	NA
High reticulocyte count	rs4766578	12	111904371	T	A	0.50	Odds Ratio	0.88	0.86	0.9	1.28E-23	0.96	0.86	1.07	0.465
High reticulocyte count	rs10774625	12	111910219	A	G	0.50	Odds Ratio	0.88	0.86	0.9	1.86E-23	0.97	0.87	1.08	0.555
High reticulocyte count	rs7137828	12	111932800	C	T	0.48	Odds Ratio	0.88	0.86	0.9	1.13E-23	1.14	0.83	1.55	0.415
High reticulocyte count	rs597808	12	111973358	A	G	0.48	Odds Ratio	0.88	0.86	0.9	1.78E-23	1.16	0.89	1.52	0.277
High reticulocyte count	rs653178	12	112007756	C	T	0.48	Odds Ratio	0.88	0.86	0.9	2.24E-23	1.18	0.91	1.53	0.204
High reticulocyte count	rs11065979	12	112059557	T	C	0.56	Odds Ratio	0.89	0.87	0.91	5.21E-21	0.98	0.93	1.04	0.538
High reticulocyte count	rs11065987	12	112072424	G	A	0.58	Odds Ratio	0.9	0.87	0.92	4.32E-18	1	0.95	1.05	0.984
High reticulocyte count	rs11065991	12	112083162	T	C	0.59	Odds Ratio	0.9	0.88	0.92	5.93E-18	1	0.96	1.05	0.944
High white blood cell (leukocyte) count	rs10774624	12	111833788	G	A	0.49	Odds Ratio	0.91	0.9	0.93	2.66E-24	1.05	0.99	1.11	0.099
High white blood cell (leukocyte) count	rs7310615	12	111865049	C	G	0.48	Odds Ratio	0.9	0.89	0.92	2.47E-28	1.17	0.98	1.4	0.079
High white blood cell (leukocyte) count	rs3184504	12	111884608	T	C	0.48	Odds Ratio	0.9	0.89	0.92	1.73E-29	NA	NA	NA	NA
High white blood cell (leukocyte) count	rs4766578	12	111904371	T	A	0.50	Odds Ratio	0.91	0.89	0.92	5.10E-28	1	0.92	1.08	0.961
High white blood cell (leukocyte) count	rs10774625	12	111910219	A	G	0.50	Odds Ratio	0.91	0.89	0.92	6.43E-28	1	0.93	1.08	0.994
High white blood cell (leukocyte) count	rs7137828	12	111932800	C	T	0.48	Odds Ratio	0.91	0.89	0.92	3.25E-28	1.37	1.09	1.73	0.007
High white blood cell (leukocyte) count	rs597808	12	111973358	A	G	0.48	Odds Ratio	0.9	0.89	0.92	2.57E-28	1.22	1	1.48	0.046
High white blood cell (leukocyte) count	rs653178	12	112007756	C	T	0.48	Odds Ratio	0.91	0.89	0.92	9.73E-28	1.36	1.13	1.64	0.001
High white blood cell (leukocyte) count	rs11065979	12	112059557	T	C	0.56	Odds Ratio	0.91	0.89	0.93	6.78E-25	0.99	0.95	1.03	0.754
High white blood cell (leukocyte) count	rs11065987	12	112072424	G	A	0.58	Odds Ratio	0.91	0.9	0.93	6.42E-23	0.99	0.96	1.03	0.712
High white blood cell (leukocyte) count	rs11065991	12	112083162	T	C	0.59	Odds Ratio	0.91	0.9	0.93	9.17E-23	0.99	0.96	1.03	0.75
Hypertension	rs10774624	12	111833788	G	A	0.49	Odds Ratio	0.94	0.93	0.95	6.05E-33	1.02	0.99	1.05	0.193
Hypertension	rs7310615	12	111865049	C	G	0.48	Odds Ratio	0.94	0.93	0.94	4.55E-38	1.04	0.94	1.15	0.444
Hypertension	rs3184504	12	111884608	T	C	0.48	Odds Ratio	0.94	0.93	0.94	6.90E-39	NA	NA	NA	NA
Hypertension	rs4766578	12	111904371	T	A	0.50	Odds Ratio	0.94	0.93	0.95	7.15E-38	0.98	0.94	1.03	0.434
Hypertension	rs10774625	12	111910219	A	G	0.50	Odds Ratio	0.94	0.93	0.95	1.70E-37	0.99	0.95	1.03	0.599
Hypertension	rs7137828	12	111932800	C	T	0.48	Odds Ratio	0.94	0.93	0.95	6.77E-38	1.1	0.97	1.24	0.124
Hypertension	rs597808	12	111973358	A	G	0.48	Odds Ratio	0.94	0.93	0.95	5.83E-38	1.06	0.95	1.18	0.274
Hypertension	rs653178	12	112007756	C	T	0.48	Odds Ratio	0.94	0.93	0.95	2.17E-37	1.12	1.01	1.24	0.036
Hypertension	rs11065979	12	112059557	T	C	0.56	Odds Ratio	0.95	0.94	0.96	4.32E-26	1.03	1.01	1.06	0.006
Hypertension	rs11065987	12	112072424	G	A	0.58	Odds Ratio	0.95	0.94	0.96	2.85E-24	1.02	1	1.04	0.049
Hypertension	rs11065991	12	112083162	T	C	0.59	Odds Ratio	0.95	0.94	0.96	3.30E-24	1.02	1	1.04	0.049
Hypothyroidism	rs10774624	12	111833788	G	A	0.49	Odds Ratio	0.82	0.81	0.84	1.18E-83	1.02	0.96	1.09	0.545
Hypothyroidism	rs7310615	12	111865049	C	G	0.48	Odds Ratio	0.81	0.8	0.83	1.99E-93	1.02	0.84	1.24	0.824
Hypothyroidism	rs3184504	12	111884608	T	C	0.48	Odds Ratio	0.81	0.8	0.83	1.42E-94	NA	NA	NA	NA
Hypothyroidism	rs4766578	12	111904371	T	A	0.50	Odds Ratio	0.82	0.8	0.84	2.31E-88	1.03	0.94	1.12	0.556
Hypothyroidism	rs10774625	12	111910219	A	G	0.50	Odds Ratio	0.82	0.8	0.84	1.44E-87	1.04	0.95	1.14	0.357
Hypothyroidism	rs7137828	12	111932800	C	T	0.48	Odds Ratio	0.81	0.8	0.83	3.96E-93	1.14	0.89	1.46	0.282
Hypothyroidism	rs597808	12	111973358	A	G	0.48	Odds Ratio	0.81	0.8	0.83	6.55E-93	1.11	0.9	1.38	0.325
Hypothyroidism	rs653178	12	112007756	C	T	0.48	Odds Ratio	0.82	0.8	0.83	6.71E-93	1.1	0.9	1.35	0.352
Hypothyroidism	rs11065979	12	112059557	T	C	0.56	Odds Ratio	0.83	0.81	0.85	6.50E-78	1	0.95	1.04	0.861
Hypothyroidism	rs11065987	12	112072424	G	A	0.58	Odds Ratio	0.84	0.82	0.85	5.88E-72	0.99	0.96	1.03	0.656
Hypothyroidism	rs11065991	12	112083162	T	C	0.59	Odds Ratio	0.83	0.82	0.85	9.47E-73	0.99	0.95	1.02	0.504
Low muscle mass	rs10774624	12	111833788	G	A	0.49	Odds Ratio	0.97	0.96	0.98	3.13E-08	0.99	0.96	1.02	0.526
Low muscle mass	rs7310615	12	111865049	C	G	0.48	Odds Ratio	0.97	0.96	0.98	1.05E-08	0.94	0.86	1.03	0.207
Low muscle mass	rs3184504	12	111884608	T	C	0.48	Odds Ratio	0.97	0.96	0.98	1.87E-08	NA	NA	NA	NA
Low muscle mass	rs4766578	12	111904371	T	A	0.50	Odds Ratio	0.97	0.96	0.98	1.41E-08	0.98	0.94	1.02	0.38
Low muscle mass	rs10774625	12	111910219	A	G	0.50	Odds Ratio	0.97	0.96	0.98	1.24E-08	0.98	0.94	1.02	0.328
Low muscle mass	rs7137828	12	111932800	C	T	0.48	Odds Ratio	0.97	0.96	0.98	1.88E-08	0.99	0.88	1.1	0.82
Low muscle mass	rs597808	12	111973358	A	G	0.48	Odds Ratio	0.97	0.96	0.98	1.31E-08	0.96	0.87	1.05	0.365
Low muscle mass	rs653178	12	112007756	C	T	0.48	Odds Ratio	0.97	0.96	0.98	8.43E-09	0.92	0.84	1.01	0.095
Low muscle mass	rs11065979	12	112059557	T	C	0.56	Odds Ratio	0.98	0.97	0.98	3.55E-07	1	0.98	1.02	0.956
Low muscle mass	rs11065987	12	112072424	G	A	0.58	Odds Ratio	0.98	0.97	0.99	5.27E-07	1	0.98	1.02	0.703
Low muscle mass	rs11065991	12	112083162	T	C	0.59	Odds Ratio	0.98	0.97	0.99	6.02E-07	1	0.98	1.02	0.733

Reaction time (log transformed)	rs10774624	12	111833788	G	A	0.49	SD change	-0.01	-0.02	-0.01	9.47E-09	-0.01	-0.02	0.01	0.339
Reaction time (log transformed)	rs7310615	12	111865049	C	G	0.48	SD change	-0.01	-0.02	-0.01	6.42E-09	-0.02	-0.06	0.02	0.318
Reaction time (log transformed)	rs3184504	12	111884608	T	C	0.48	SD change	-0.01	-0.02	-0.01	9.85E-09	NA	NA	NA	NA
Reaction time (log transformed)	rs4766578	12	111904371	T	A	0.50	SD change	-0.01	-0.02	-0.01	2.43E-10	-0.03	-0.05	-0.01	0.001
Reaction time (log transformed)	rs10774625	12	111910219	A	G	0.50	SD change	-0.01	-0.02	-0.01	1.45E-10	-0.03	-0.05	-0.01	0
Reaction time (log transformed)	rs7137828	12	111932800	C	T	0.48	SD change	-0.01	-0.02	-0.01	1.91E-08	0.03	-0.02	0.08	0.267
Reaction time (log transformed)	rs597808	12	111973358	A	G	0.48	SD change	-0.01	-0.02	-0.01	2.06E-08	0.02	-0.02	0.07	0.291
Reaction time (log transformed)	rs653178	12	112007756	C	T	0.48	SD change	-0.01	-0.02	-0.01	1.00E-08	-0.01	-0.05	0.04	0.805
Reaction time (log transformed)	rs11065979	12	112059557	T	C	0.56	SD change	-0.01	-0.02	-0.01	2.01E-09	-0.01	-0.02	0	0.056
Reaction time (log transformed)	rs11065987	12	112072424	G	A	0.58	SD change	-0.01	-0.02	-0.01	9.42E-09	-0.01	-0.02	0	0.108
Reaction time (log transformed)	rs11065991	12	112083162	T	C	0.59	SD change	-0.01	-0.02	-0.01	5.05E-09	-0.01	-0.02	0	0.07
Systolic blood pressure	rs10774624	12	111833788	G	A	0.49	SD change	-0.02	-0.02	-0.01	2.66E-16	0.01	-0.01	0.02	0.472
Systolic blood pressure	rs7310615	12	111865049	C	G	0.48	SD change	-0.02	-0.02	-0.02	1.25E-18	0	-0.04	0.05	0.833
Systolic blood pressure	rs3184504	12	111884608	T	C	0.48	SD change	-0.02	-0.02	-0.02	6.81E-19	NA	NA	NA	NA
Systolic blood pressure	rs4766578	12	111904371	T	A	0.50	SD change	-0.02	-0.02	-0.02	1.79E-19	-0.02	-0.03	0	0.093
Systolic blood pressure	rs10774625	12	111910219	A	G	0.50	SD change	-0.02	-0.02	-0.02	1.69E-19	-0.02	-0.03	0	0.086
Systolic blood pressure	rs7137828	12	111932800	C	T	0.48	SD change	-0.02	-0.02	-0.02	8.59E-19	0	-0.05	0.05	0.948
Systolic blood pressure	rs597808	12	111973358	A	G	0.48	SD change	-0.02	-0.02	-0.02	9.96E-19	0	-0.05	0.05	0.983
Systolic blood pressure	rs653178	12	112007756	C	T	0.48	SD change	-0.02	-0.02	-0.02	2.22E-18	0.02	-0.02	0.07	0.357
Systolic blood pressure	rs11065979	12	112059557	T	C	0.56	SD change	-0.02	-0.02	-0.01	2.63E-15	0	-0.01	0.01	0.826
Systolic blood pressure	rs11065987	12	112072424	G	A	0.58	SD change	-0.02	-0.02	-0.01	6.70E-12	0.01	0	0.01	0.147
Systolic blood pressure	rs11065991	12	112083162	T	C	0.59	SD change	-0.02	-0.02	-0.01	8.82E-12	0.01	0	0.02	0.132
Type 1 diabetes	rs10774624	12	111833788	G	A	0.49	Odds Ratio	0.89	0.84	0.94	3.27E-05	1.1	0.93	1.31	0.273
Type 1 diabetes	rs7310615	12	111865049	C	G	0.48	Odds Ratio	0.88	0.83	0.93	3.10E-06	1.17	0.67	2.02	0.583
Type 1 diabetes	rs3184504	12	111884608	T	C	0.48	Odds Ratio	0.88	0.83	0.93	2.10E-06	NA	NA	NA	NA
Type 1 diabetes	rs4766578	12	111904371	T	A	0.50	Odds Ratio	0.89	0.84	0.94	1.58E-05	1.19	0.92	1.54	0.19
Type 1 diabetes	rs10774625	12	111910219	A	G	0.50	Odds Ratio	0.89	0.84	0.94	2.04E-05	1.22	0.94	1.58	0.127
Type 1 diabetes	rs7137828	12	111932800	C	T	0.48	Odds Ratio	0.88	0.83	0.93	2.25E-06	0.99	0.51	1.91	0.97
Type 1 diabetes	rs597808	12	111973358	A	G	0.48	Odds Ratio	0.87	0.83	0.92	8.19E-07	0.57	0.35	0.93	0.024
Type 1 diabetes	rs653178	12	112007756	C	T	0.48	Odds Ratio	0.88	0.83	0.92	1.52E-06	0.78	0.45	1.33	0.356
Type 1 diabetes	rs11065979	12	112059557	T	C	0.56	Odds Ratio	0.89	0.84	0.94	2.41E-05	1.01	0.89	1.14	0.905
Type 1 diabetes	rs11065987	12	112072424	G	A	0.58	Odds Ratio	0.89	0.84	0.94	3.02E-05	0.99	0.89	1.1	0.841
Type 1 diabetes	rs11065991	12	112083162	T	C	0.59	Odds Ratio	0.89	0.84	0.94	2.28E-05	0.98	0.89	1.09	0.743

1. P-values highlighted in red if smaller than the Bonferroni-corrected level of 0.00096

2. Both SNP effect and conditional SNP effect adjusted for age, sex, assessment, array type, and PC1-PC5

3. Results of rs3184504 marked by grey background