

Figure S1. EZH2 expression levels in patients. The mRNA expression levels of EZH2 in all 3 patients were detected via reverse transcription-quantitative PCR. N-PASMC cell line was used as the control. EZH2, enhancer of zeste homolog 2; N-PASMC, normal pulmonary arterial smooth muscle cell.

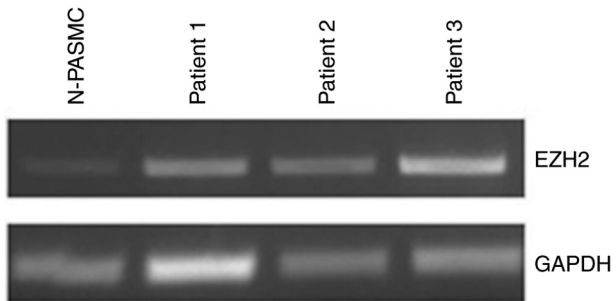


Figure S2. EZH2 gene expression levels following PASMCM transfection. (A) Western blot analysis of EZH2 overexpression. pM-EZH2 vector was transfected into N-PASMCs. pM plasmid was transfected as a control. (B) Western blot analysis of EZH2 knockdown. siRNA targeting EZH2 was transfected into PASMCs from CTEPH patient 3. Scrambled siRNA was used as the RNAi NC (si-NC). The reaction products were subjected to western blot analysis using anti-EZH2 and GAPDH antibodies. EZH2, enhancer of zeste homolog 2; PASMCM, pulmonary arterial smooth muscle cell; N, normal pulmonary arterial smooth muscle cell; si, small interfering; NC, negative control; CTEPH, chronic thromboembolic pulmonary hypertension; RNAi, RNA interference.

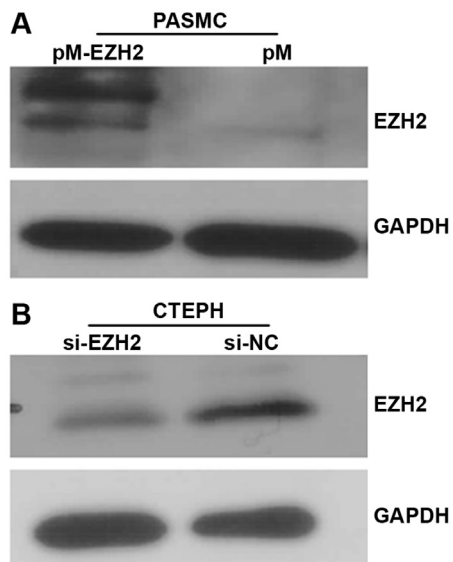


Table SI. Clinical characteristics of patients with CTEPH.

Characteristics	CTEPH-1	CTEPH-2	CTEPH-3
Age, years	56	61	49
Sex	Male	Male	Female
Mean pulmonary arterial pressure, mmHg	40	60	59
Pulmonary vascular resistance, dyn·s cm ⁻⁵	1,079	1,803	1,772
WHO functional class	III	III	III
6 min walk distance, m	345	429	329
Risk factor			
Previous VTE	No	No	No
Recurrent VTE	No	No	No
Malignancy	No	No	No
Ventriculo-atrial shunt	No	No	No
Pacemaker	No	No	No
Lung cancer	No	No	No

CTEPH, chronic thromboembolic pulmonary hypertension; VTE, venous thromboembolism.

Table SII. Quantification of relative expression levels.

Patients	$2^{-\Delta\Delta C_q}$ value		
	Enhancer of zeste homolog 2	Mean	SD
Control group		1.00	0.05
1	1.04		
2	1.02		
3	0.94		
CTEPH group		8.44	0.73
CTEPH-1	8.61		
CTEPH-2	8.85		
CTEPH-3	7.86		

CTEPH, chronic thromboembolic pulmonary hypertension.

Table SIII. Quantification of relative expression levels.

A, NADPH oxidase 1			
Patients	$2^{-\Delta\Delta Cq}$ value		
	Total	Mean	SD
Control group		6.39×10^{-6}	6.46×10^{-6}
1	1.15×10^{-5}		
2	6.91×10^{-6}		
3	9.59×10^{-7}		
PM-EZH2 group		5.29×10^{-6}	2.36×10^{-6}
PM-EZH2-1	8.27×10^{-6}		
PM-EZH2-2	7.17×10^{-6}		
PM-EZH2-3	3.74×10^{-6}		
B, Superoxide dismutase 3			
Patients	$2^{-\Delta\Delta Cq}$ value		
	Total	Mean	SD
Control group		2.05×10^{-4}	9.61×10^{-5}
1	2.03×10^{-4}		
2	2.43×10^{-4}		
3	1.68×10^{-4}		
PM-EZH2 group		3.78×10^{-5}	3.25×10^{-5}
PM-EZH2-1	1.15×10^{-4}		
PM-EZH2-2	1.15×10^{-4}		
PM-EZH2-3	5.85×10^{-5}		