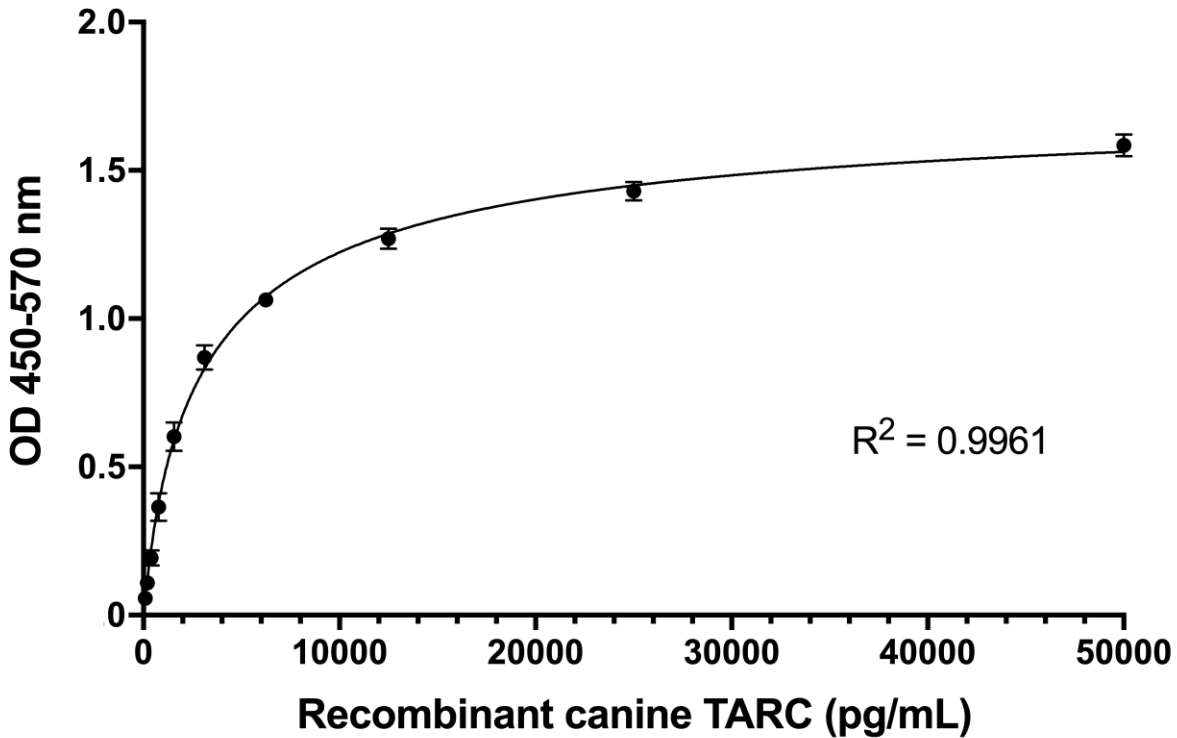


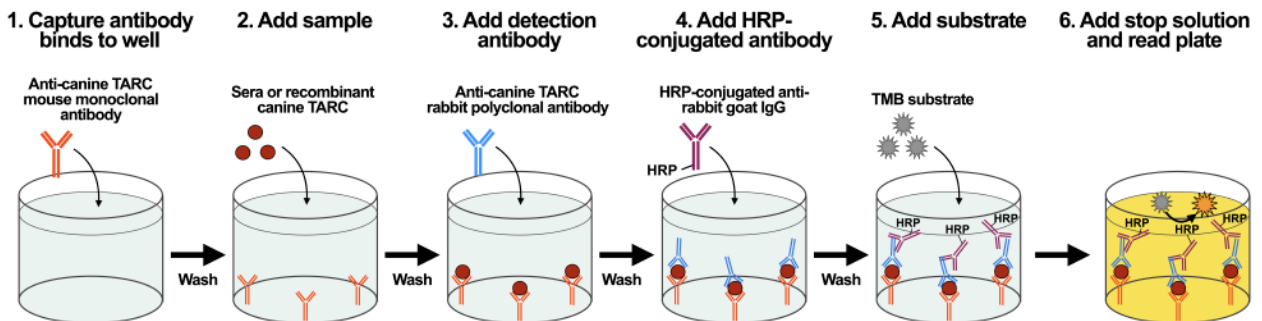
## Supporting Information

**Figure S1. A standard curve of the sandwich ELISA with serial dilutions of purified recombinant canine TARC ranging from 98 to 50,000 pg/mL.**



The concentrations were determined by absorbance at optical density (OD) 450-570 nm. The error bars show the  $\pm$  standard deviation of three parallel experiments.

**Figure S2. The workflow of the sandwich ELISA assay.**



HRP, horseradish peroxidase; IgG, immunoglobulin G; TARC, thymus and activation-regulated chemokine; TMB, 3,3',5,5'-tetramethylbenzidine