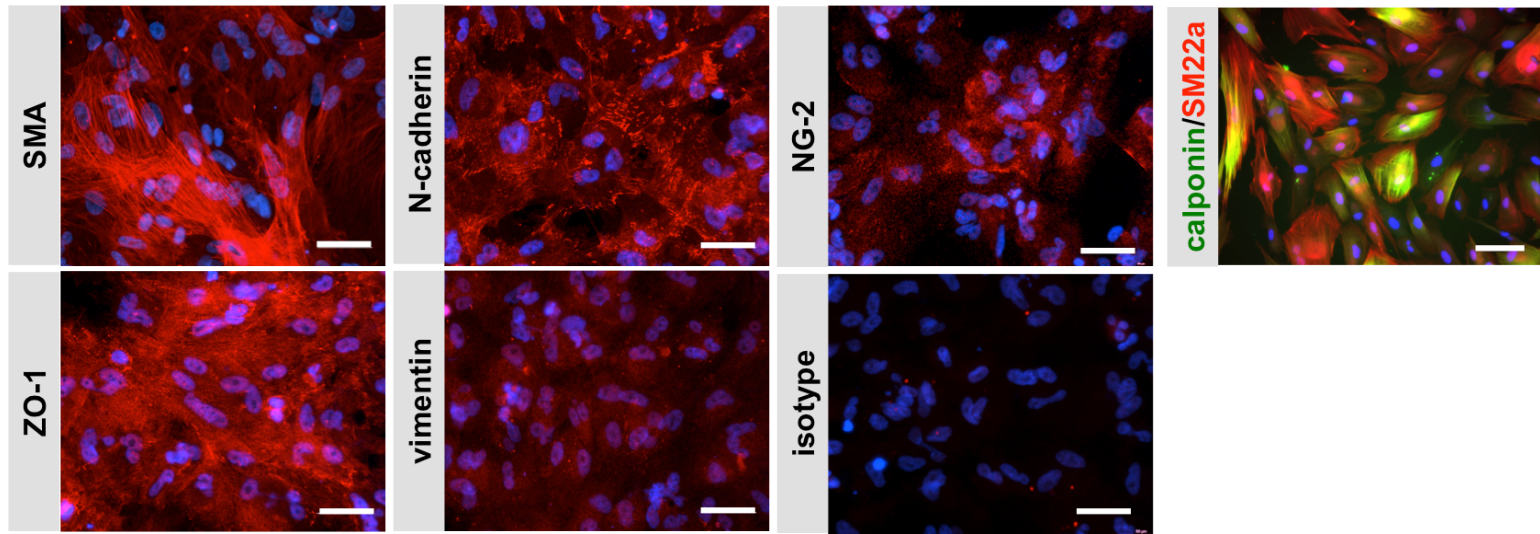


Supplementary Figure 7



Supplementary Figure 7. Immunofluorescence staining of hiPSCs-derived smooth muscle-like cells (SMLCs)

Immunofluorescence staining of hiPSC-derived smooth muscle-like cells (SMLCs) from donor 2 seeded in a chamber slide for α -smooth muscle actin (SMA), N-cadherin, NG-2, ZO-1, or Vimentin, or from the IMR90-4 line stained for calponin (green) and SM22 α (red). Nuclei were stained with DAPI (blue). Scale bars = 50 μ m. Each staining is representative of at least 3 independent differentiations performed on 3 distinct chamber slides.