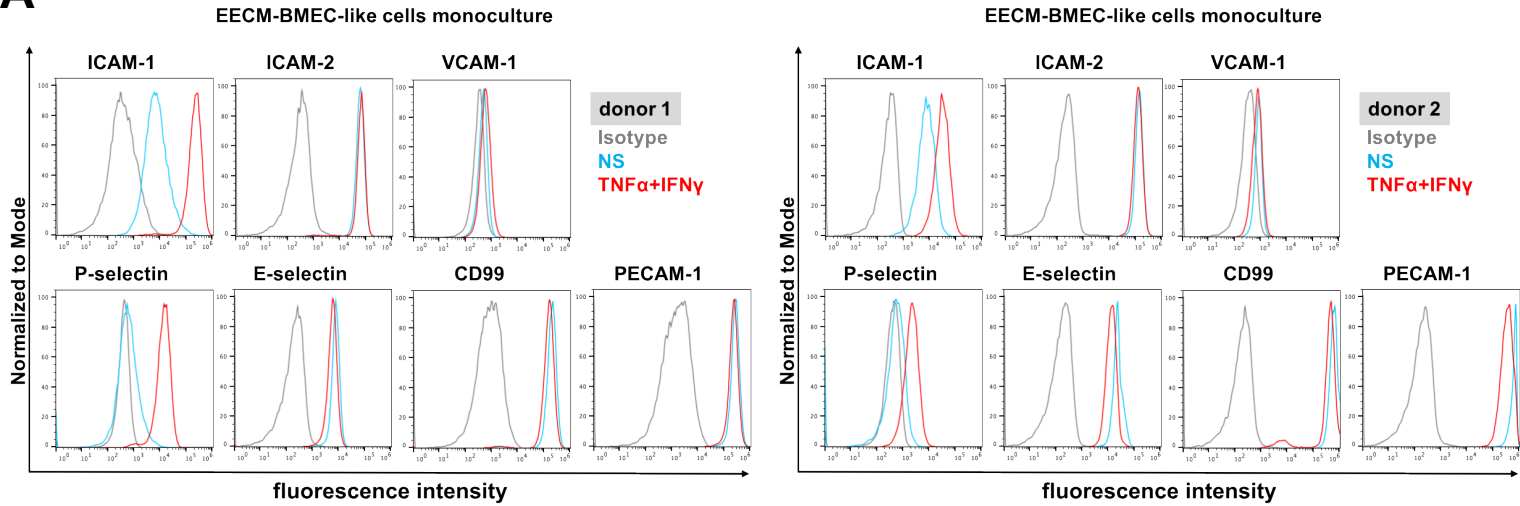
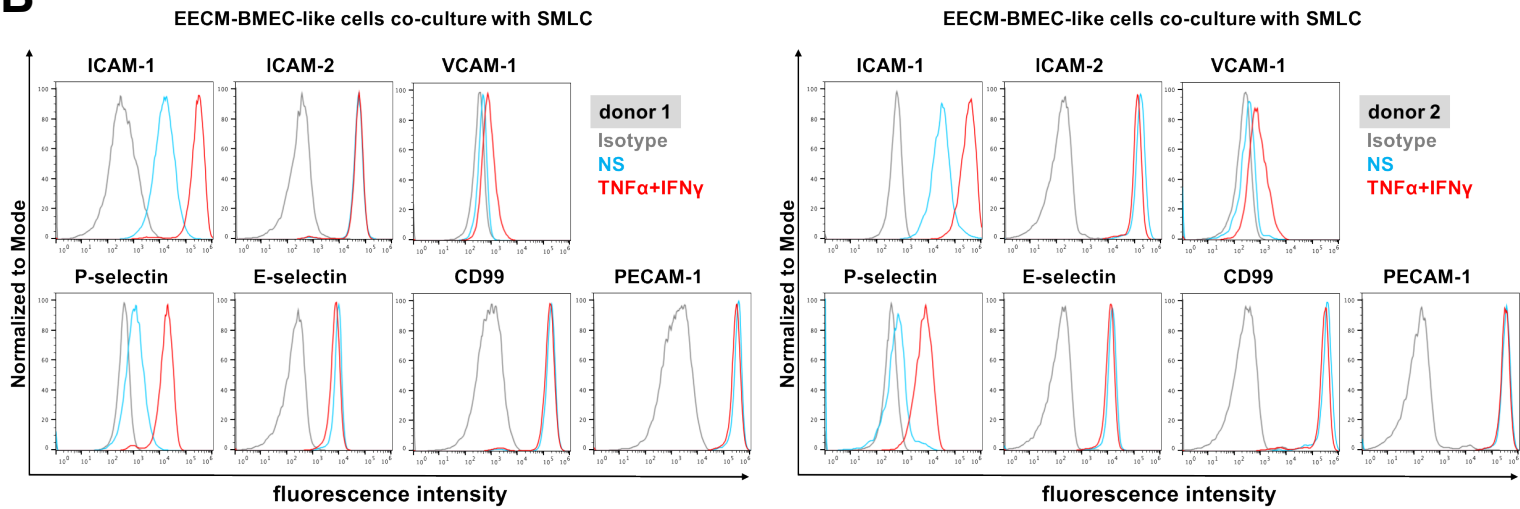
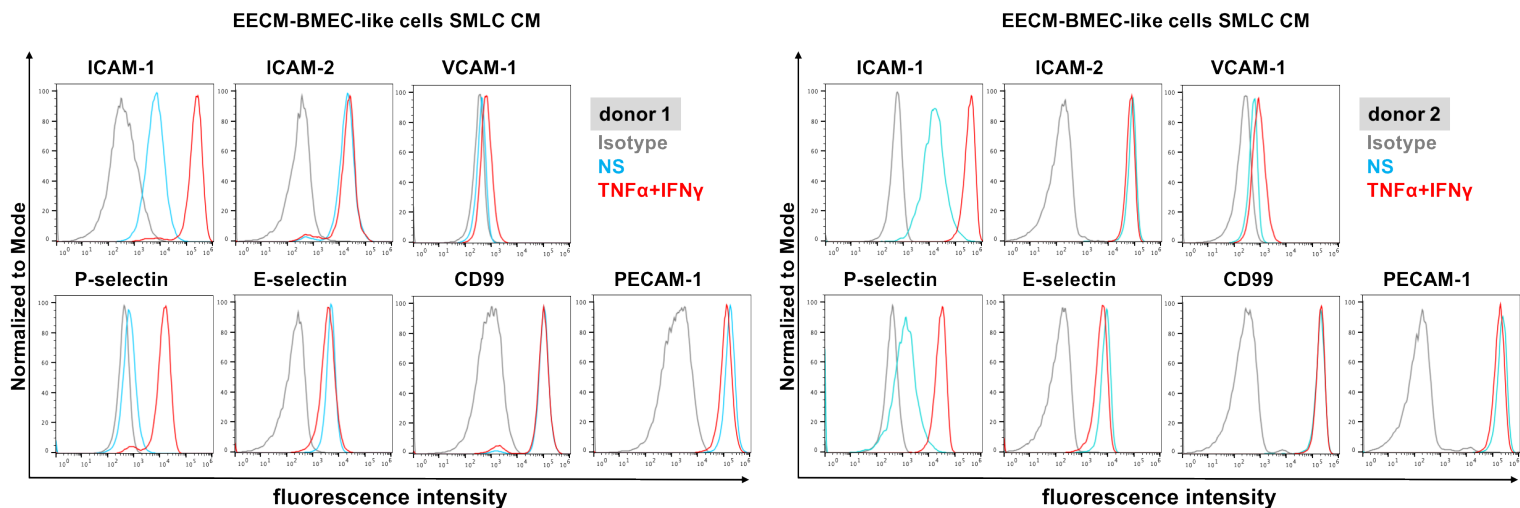


Supplementary Figure 8

A**B****C**

Supplementary Figure 8. Adhesion molecule phenotype of EECM-BMEC-like cells from additional hiPSC clones.

(A-C) Cell surface staining of EECM-differentiated BMEC monoculture (A), SMLC co-culture (B), or SMLC conditioned medium (C) for the adhesion molecules ICAM-1, ICAM-2, VCAM-1, P-selectin, E-selectin, CD99, and PECAM-1 was analyzed by flow cytometry. Isotype control, non-stimulated (NS), and 16 h pro-inflammatory cytokine-stimulated condition (1 ng/mL TNF- α + 20 IU/mL IFN- γ) are represented respectively in grey, blue, and red lines in a histogram overlay. Representative data from donor 1 (left) and donor 2 (right) are shown.