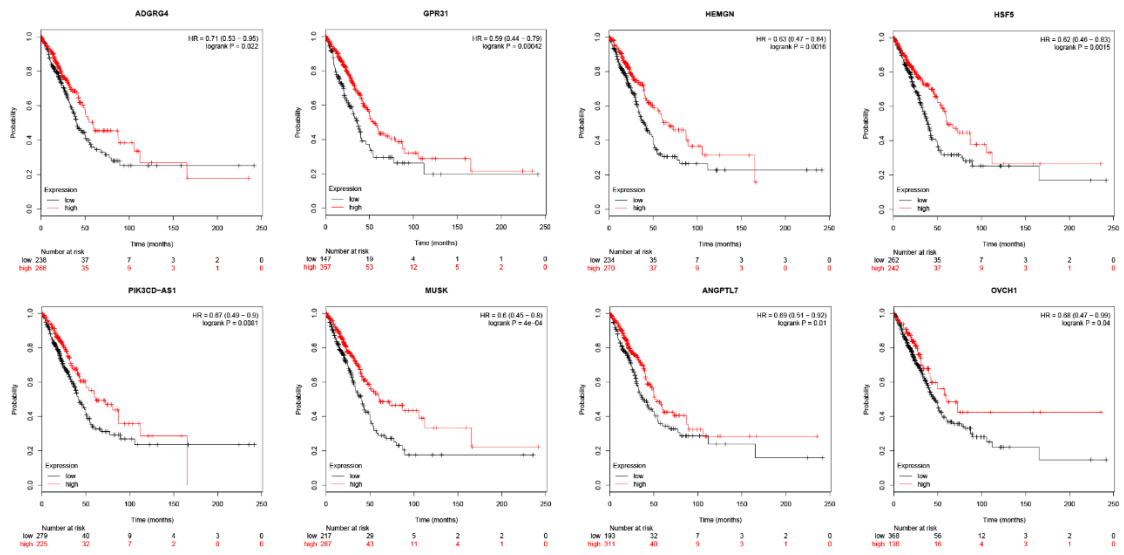


Supplementary Figures

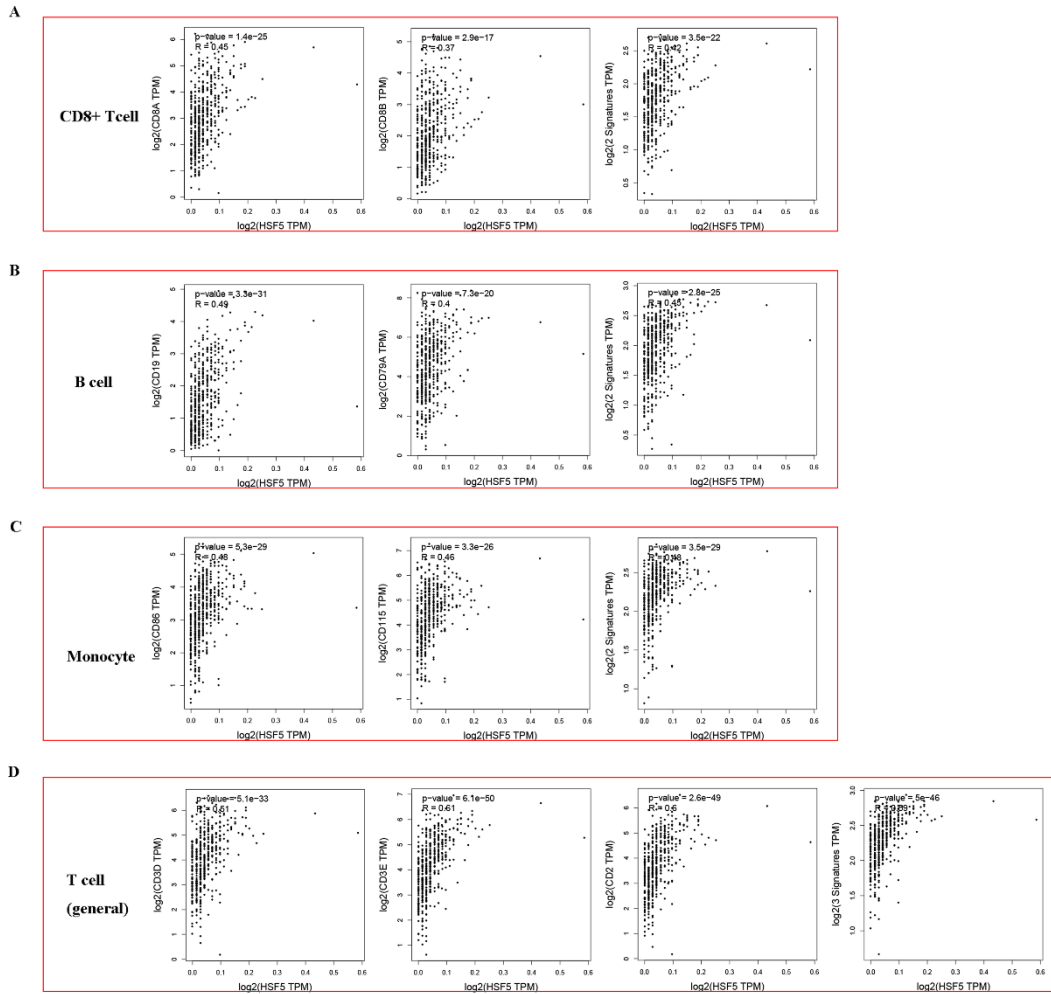
Supplementary figure 1.



Supplementary figure 1. Verification of the genes of prognostic value in the Kaplan-Meier plotter

database.

Supplementary Figure 2.



Supplementary Figure 2. Correlation of HSF5 and immune marker sets of various immune cells in LUAD. CD8A and CD8B of CD8+T cells (A), CD86 and CD115 of monocytes (B), CD19 and CD79A of B cells (C), CD3D, CD3E and CD2 of general T cells (D), are significantly associated with HSF5 expression based on GEPIA database.