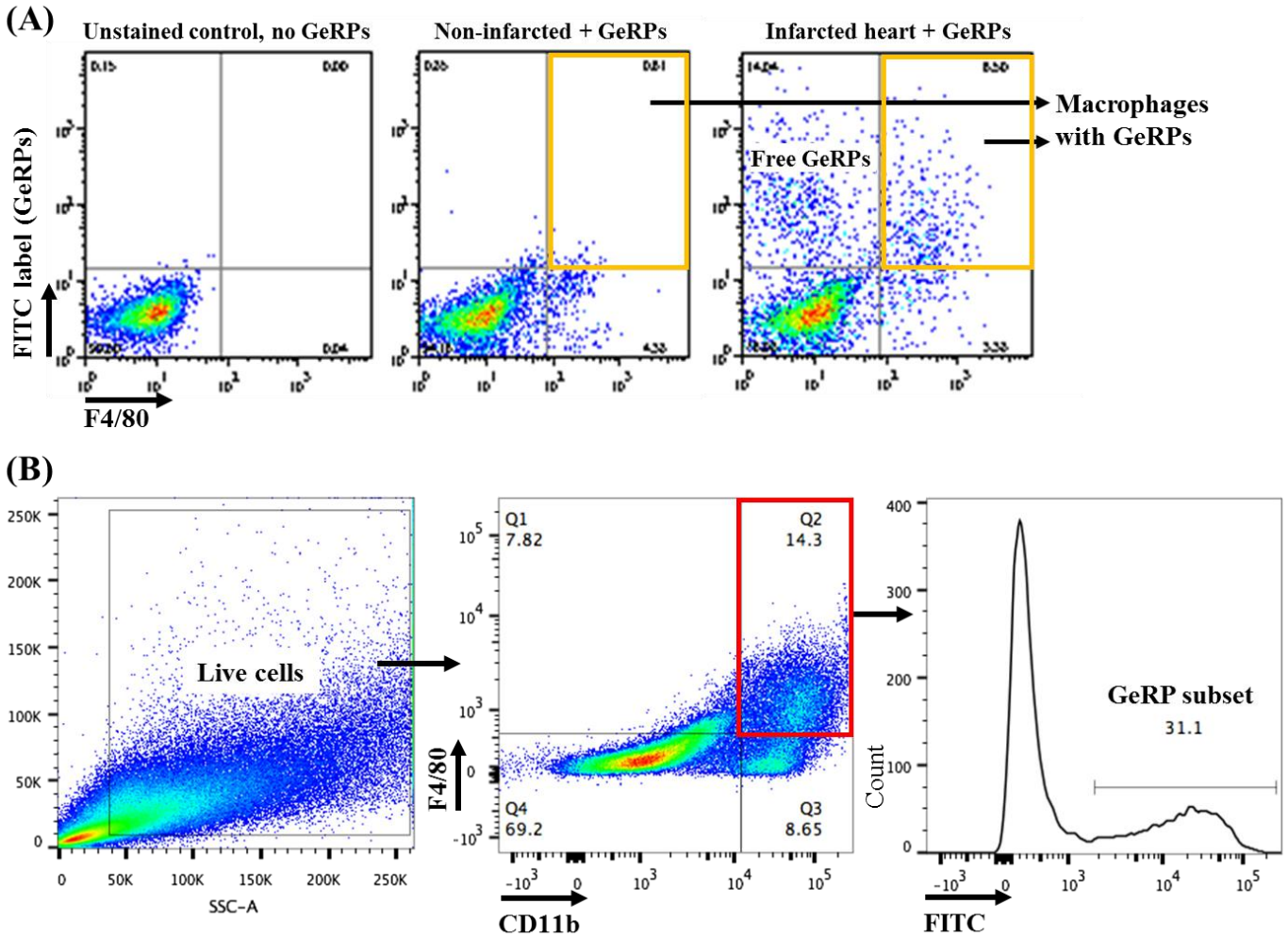


SUPPLEMENTARY DATA



SUPPLEMENTARY FIG. S1. (A) Representative flow cytometry plots of whole heart isolates in experiments using empty GeRPs without siRNA. The left panel illustrates a control heart without infarction, GeRP injection, or F4/80 staining. The center panel shows a non-infarcted heart at 7 days following intramyocardial GeRP injection. The right panel exemplifies an infarcted heart at 7 days following infarction and intra-infarct GeRP injection. Orange outlines capture the F4/80⁺ cells colocalized with FITC fluorescence, indicative of intra-cardiac macrophages with ingested FITC-labeled GeRP particles. (B) Representative flow cytometry plot illustrating the method used to calculate the proportion of CD11b-gated F4/80⁺ cells containing FITC⁺ siRNA-loaded GeRPs in infarcted, GeRP-treated hearts. All live cardiac cells (left panel) were sorted into CD11b⁺-gated F4/80⁺ macrophages (center) which were then assayed for FITC-containing GeRPs (right panel).