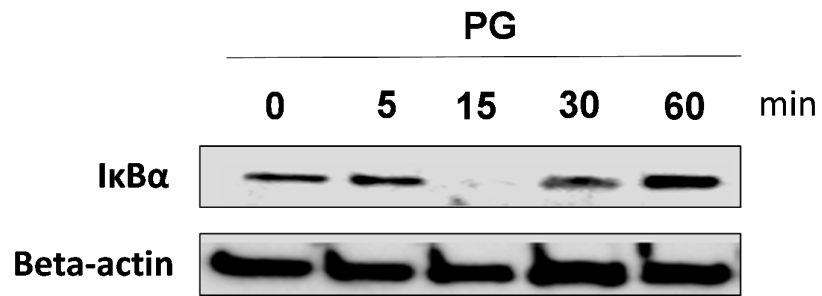


**Figure S1.** RAW 264.7 macrophages were stimulation with PG (5  $\mu\text{g}/\text{mL}$ ). MAPK phosphorylation (ERK 1/2, SAPK/JNK and p38 MAPK) were evaluated in RAW 264.7 macrophages stimulated with PG for 0, 5, 15, 30 and 60 min ( $n = 3$  per group).



**Figure S2.** RAW 264.7 macrophages were stimulation with PG (5  $\mu\text{g}/\text{mL}$ ). I $\kappa$ B $\alpha$  levels were evaluated in RAW 264.7 macrophages stimulated with PG for 0, 5, 15, 30 and 60 min ( $n = 3$  per group).