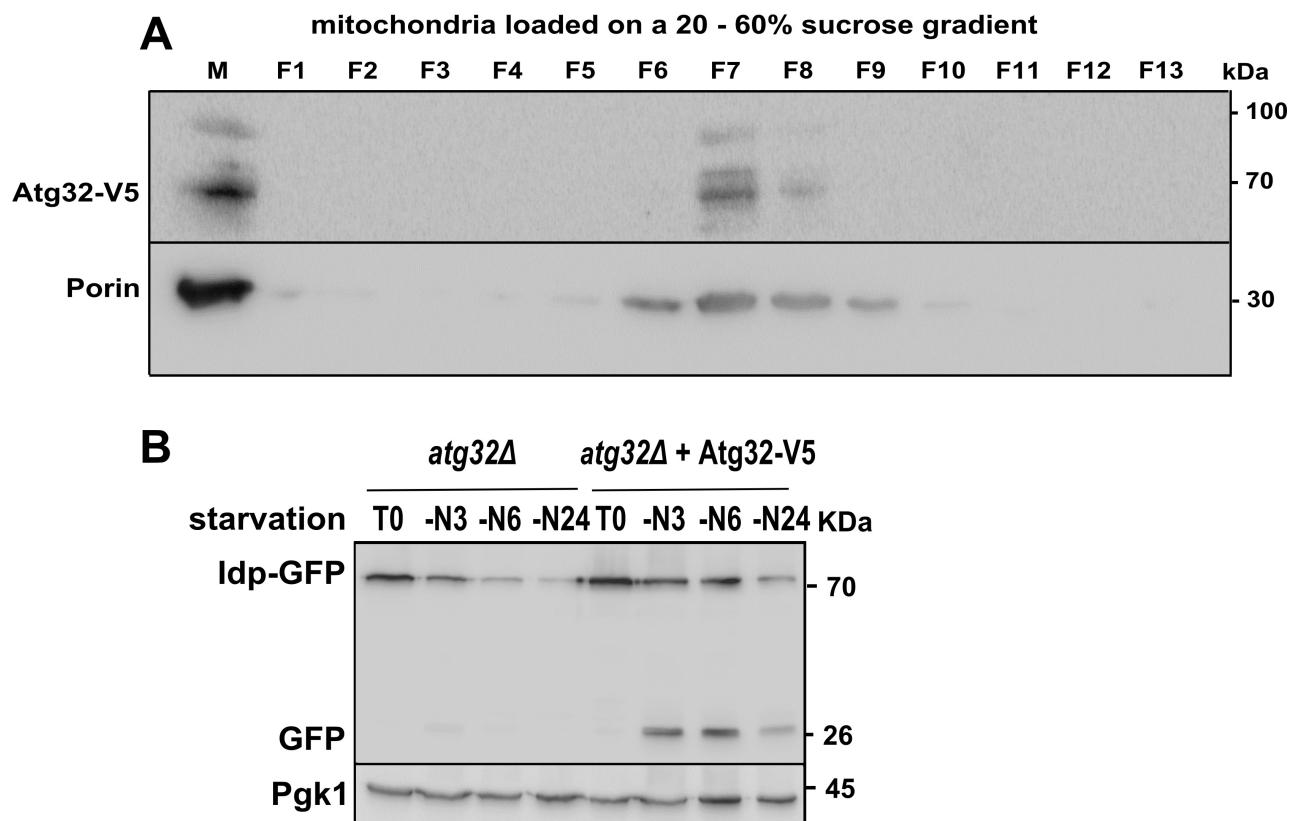


## Figure S1



**Figure S1 : Atg32-V5 recombinant protein localizes into mitochondria and restores mitophagy in *atg32Δ* mutant cells upon nitrogen starvation.** (A) *atg32Δ* mutant cells grown in a CMS-L medium and expressing Atg32-V5 protein were harvested in a mid-exponential phase of growth. Then, cells were lysed and purified mitochondria prepared as described in Vigie et al. [34] were loaded on a 20–60% sucrose gradient. Fractions were collected and analyzed by immunodetection. Anti-V5 antibody was used to visualize Atg32-V5, and anti-Porin antibody was used to detect mitochondria-containing fractions. (B) Mitophagy was assessed using mitophagy-dependent processing of the Idp1-GFP tool in *atg32Δ* mutant and *atg32Δ*-expressing Atg32-V5. Cells were harvested at indicated times. The total protein extracts corresponding to  $5 \times 10^6$  cells/50  $\mu$ g proteins per line were separated by 12.5% SDS-PAGE and analyzed by immunodetection using anti-GFP antibody.