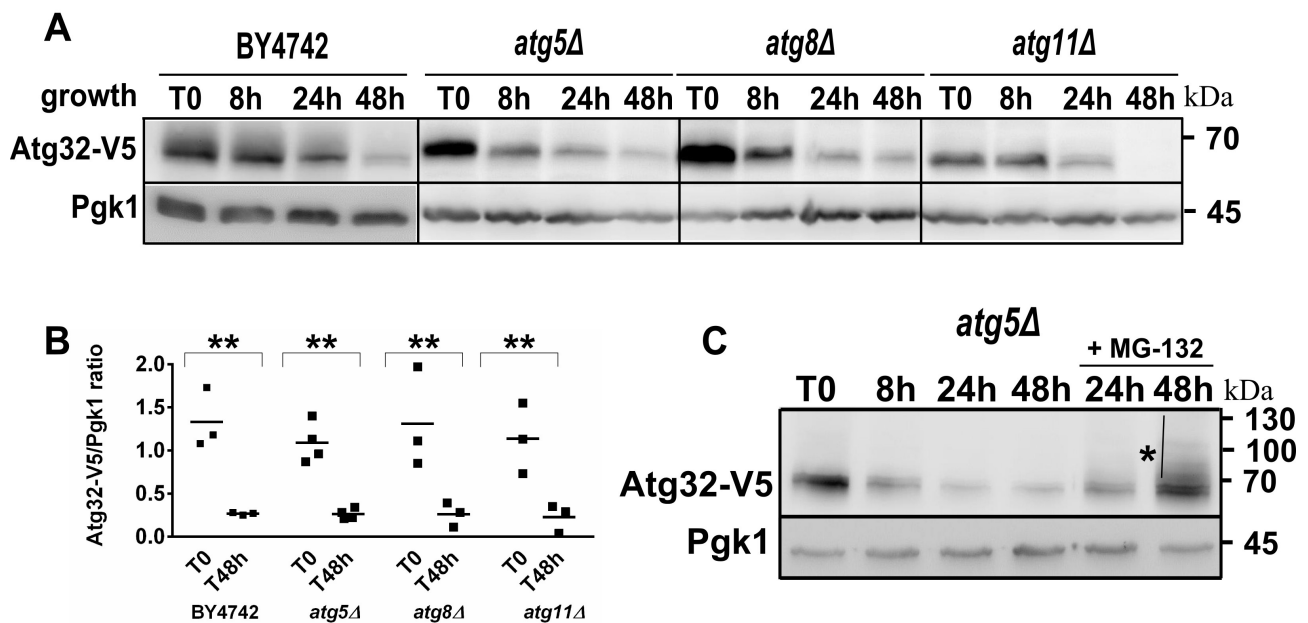


## Figure S3



**Figure S3: Degradation of Atg32 protein is not impaired in autophagy-deficient mutants under normal growth condition.** (A) *atg5Δ*, *atg8Δ*, and *atg11Δ* mutant cells transformed with a plasmid expressing Atg32-V5 were grown in a CMS-L medium. Cells were harvested at indicated times. (B) The Atg32-V5/Pgk1 ratios were quantified at T0 and 48 h time points for all tested strains; \*\*  $p < 0.01$ . (C) *atg5Δ* mutant cells expressing Atg32-V5 were treated with MG-132 at time point 8 h. Total protein extracts were prepared and analyzed by immunodetection. Anti-V5 antibody was used to visualize Atg32-V5 protein.