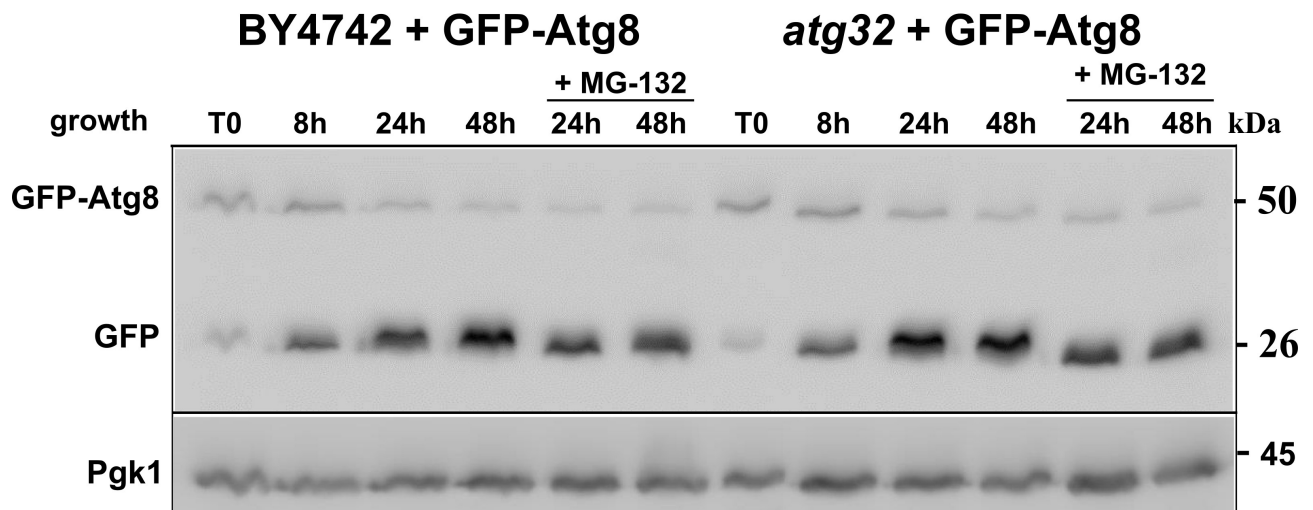


## Figure S6



**Figure S6 : Inhibition of the proteasome with MG-132 does not affect autophagy.** BY4742 (A) and *atg32Δ* mutant (B) cells expressing GFP-Atg8 protein grown in a CMS-L medium in presence or absence of MG-132 were harvested at indicated times. Total protein extracts from  $2 \times 10^7$  cells were prepared and separated by 12.5% SDS-PAGE gel as described in the Material and Methods section. Proteins were detected using antibodies against GFP or Pgk1.