

Supplementary Materials

Novel Piperazine-Chalcone Hybrids and Related Pyrazoline Analogs Targeting VEGFR-2 kinase; Design, Synthesis, Molecular Docking studies and Anticancer Evaluation

Marwa F. Ahmed^{a,b*}, Eman Y. Santali^a and Radwan El-Haggar^{b*}

^a*Department of Pharmaceutical Chemistry, Faculty of Pharmacy, Taif University, Taif 21974, Kingdom of Saudi Arabia.*

^b*Department of Pharmaceutical Chemistry, Faculty of Pharmacy, Helwan University, Cairo, 11795, Egypt.*

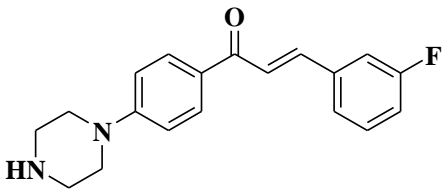
*** Corresponding authors:**

Dr. Radwan El-Haggar, **Email:** radwan_elhaggar@pharm.helwan.edu.eg

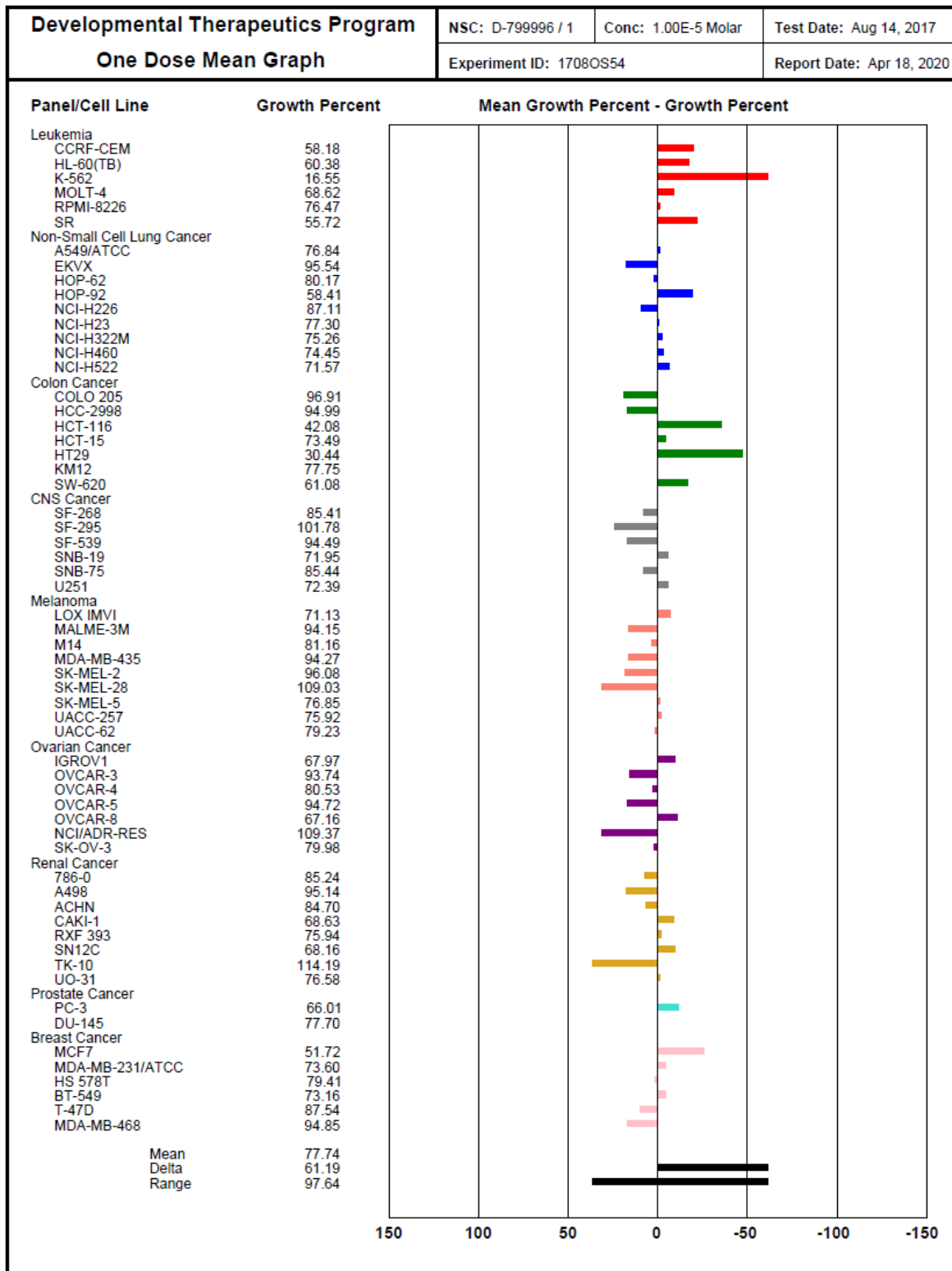
Dr. Marwa F. Ahmed, **Email:** marwafarag80@yahoo.com

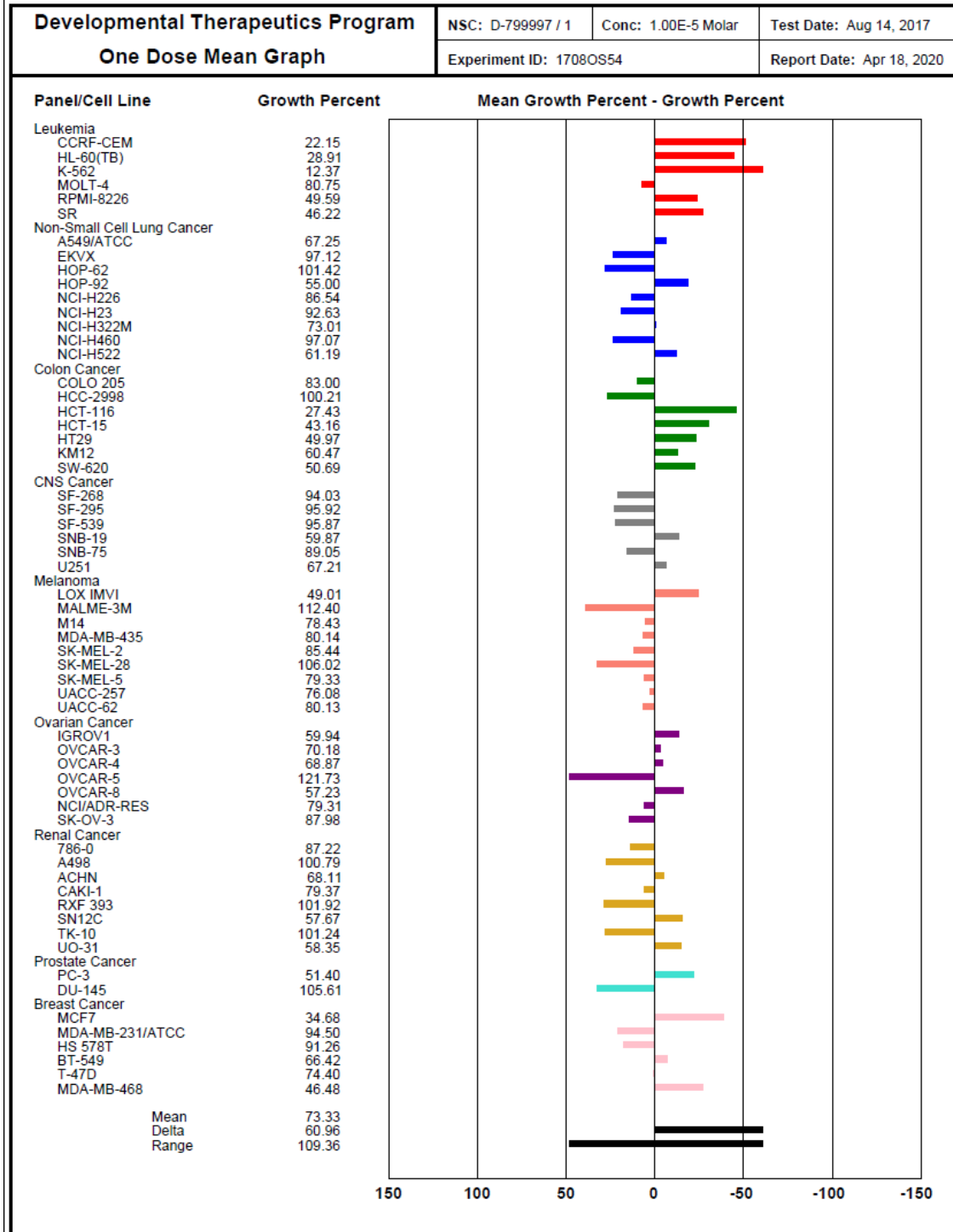
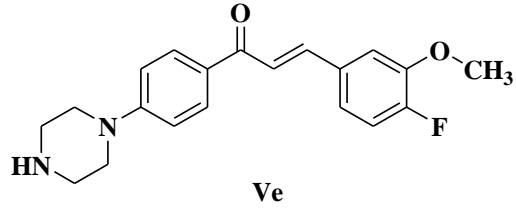
Supplementary Materials

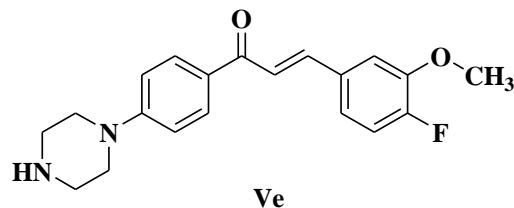
NCI data	3-14
Representative ^1H and ^{13}C NMR spectra for selected compounds	15-36



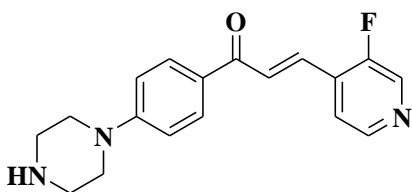
Vd



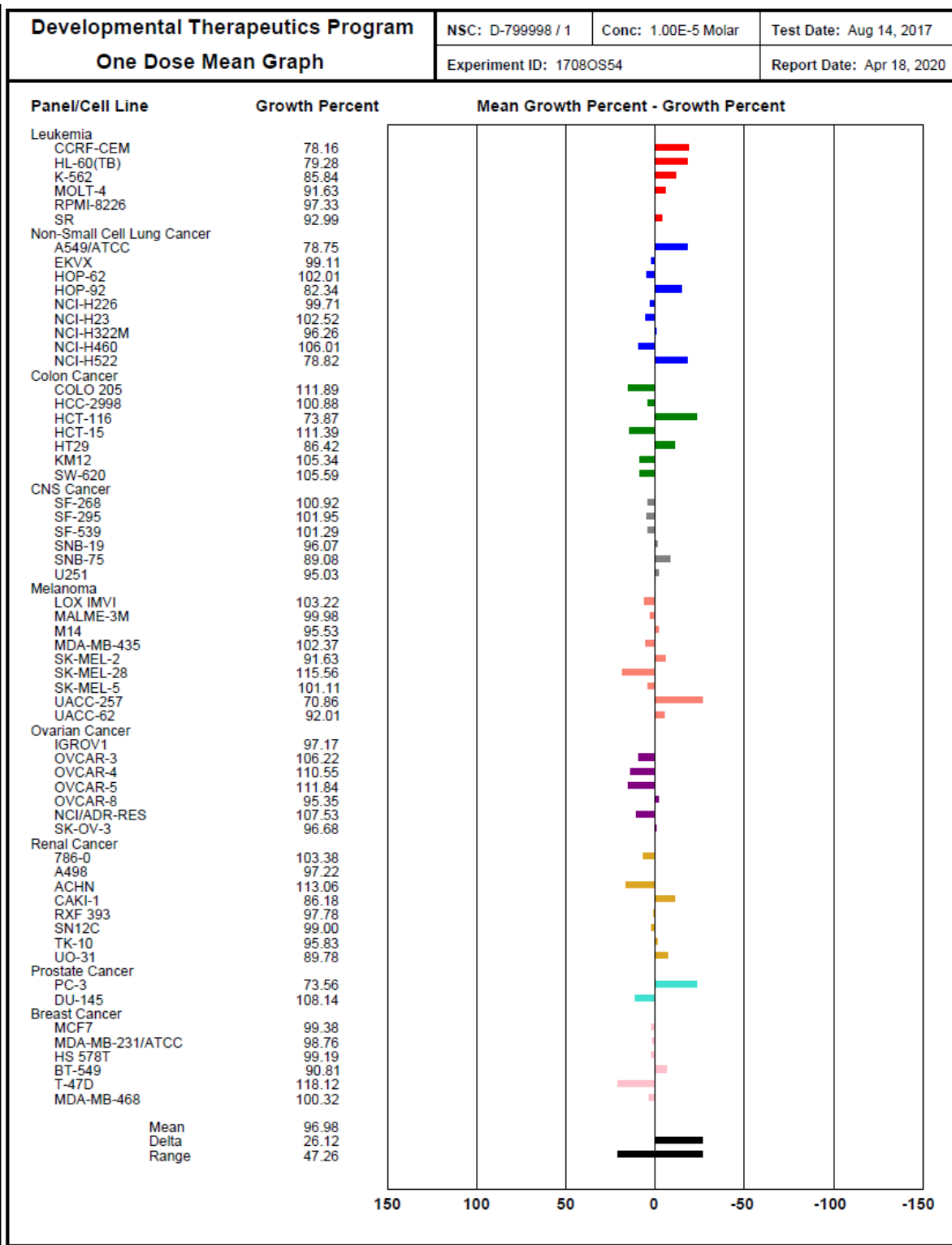


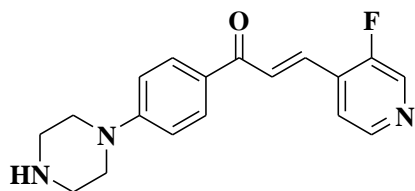


A1						NSC											
	A	B	C	D	E	F	G	H	I	J	K	L	M	N	O	P	
1	NSC	EXPID	PLANDA	TESTSE	PREFIX	SAMPLE	DISCREI	CONC	CONCUI	CONCUI	PANELN	CELLNB	PANELN	CELLNA	GIPRCNT		
2	799997	17080S5	Mon Aug	113	S		1	D	0.00001	M	Molar	7	3	Leukemi	CCR-F-C	22.1479	
3	799997	17080S5	Mon Aug	113	S		1	D	0.00001	M	Molar	7	8	Leukemi	HL-60(TE	28.9061	
4	799997	17080S5	Mon Aug	113	S		1	D	0.00001	M	Molar	7	5	Leukemi	K-562	12.373	
5	799997	17080S5	Mon Aug	113	S		1	D	0.00001	M	Molar	7	6	Leukemi	MOLT-4	80.7468	
6	799997	17080S5	Mon Aug	113	S		1	D	0.00001	M	Molar	7	10	Leukemi	RPMI-82	49.5889	
7	799997	17080S5	Mon Aug	113	S		1	D	0.00001	M	Molar	7	19	Leukemi	SR	46.2222	
8	799997	17080S5	Mon Aug	113	S		1	D	0.00001	M	Molar	1	4	Non-Sm	A549IAT	67.25	
9	799997	17080S5	Mon Aug	113	S		1	D	0.00001	M	Molar	1	8	Non-Sm	EKVX	97.1164	
10	799997	17080S5	Mon Aug	113	S		1	D	0.00001	M	Molar	1	26	Non-Sm	HOP-62	101.422	
11	799997	17080S5	Mon Aug	113	S		1	D	0.00001	M	Molar	1	29	Non-Sm	HOP-92	54.9957	
12	799997	17080S5	Mon Aug	113	S		1	D	0.00001	M	Molar	1	13	Non-Sm	NCI-H22	86.5426	
13	799997	17080S5	Mon Aug	113	S		1	D	0.00001	M	Molar	1	1	Non-Sm	NCI-H23	92.629	
14	799997	17080S5	Mon Aug	113	S		1	D	0.00001	M	Molar	1	17	Non-Sm	NCI-H32	73.0061	
15	799997	17080S5	Mon Aug	113	S		1	D	0.00001	M	Molar	1	21	Non-Sm	NCI-H46	97.0664	
16	799997	17080S5	Mon Aug	113	S		1	D	0.00001	M	Molar	1	3	Non-Sm	NCI-H52	61.1934	
17	799997	17080S5	Mon Aug	113	S		1	D	0.00001	M	Molar	4	10	Colon C	COLO 20	82.9973	
18	799997	17080S5	Mon Aug	113	S		1	D	0.00001	M	Molar	4	2	Colon C	HCC-299	100.206	
19	799997	17080S5	Mon Aug	113	S		1	D	0.00001	M	Molar	4	3	Colon C	HCT-116	27.4341	
20	799997	17080S5	Mon Aug	113	S		1	D	0.00001	M	Molar	4	15	Colon C	HCT-15	43.1587	
21	799997	17080S5	Mon Aug	113	S		1	D	0.00001	M	Molar	4	1	Colon C	HT29	49.9667	
22	799997	17080S5	Mon Aug	113	S		1	D	0.00001	M	Molar	4	17	Colon C	KMI2	60.4651	
23	799997	17080S5	Mon Aug	113	S		1	D	0.00001	M	Molar	4	9	Colon C	Sw-620	50.6927	
24	799997	17080S5	Mon Aug	113	S		1	D	0.00001	M	Molar	12	14	CNS Car	SF-268	94.031	
25	799997	17080S5	Mon Aug	113	S		1	D	0.00001	M	Molar	12	15	CNS Car	SF-295	95.9248	
26	799997	17080S5	Mon Aug	113	S		1	D	0.00001	M	Molar	12	16	CNS Car	SF-539	95.871	
27	799997	17080S5	Mon Aug	113	S		1	D	0.00001	M	Molar	12	2	CNS Car	SNB-19	59.8714	
28	799997	17080S5	Mon Aug	113	S		1	D	0.00001	M	Molar	12	5	CNS Car	SNB-75	89.0457	
29	799997	17080S5	Mon Aug	113	S		1	D	0.00001	M	Molar	12	9	CNS Car	U251	67.2089	
30	799997	17080S5	Mon Aug	113	S		1	D	0.00001	M	Molar	10	1	Melanon	LOX-IMV	49.0062	
31	799997	17080S5	Mon Aug	113	S		1	D	0.00001	M	Molar	10	2	Melanon	MALME	112.398	
32	799997	17080S5	Mon Aug	113	S		1	D	0.00001	M	Molar	10	14	Melanon	M14	78.4271	
33	799997	17080S5	Mon Aug	113	S		1	D	0.00001	M	Molar	5	11	Melanon	MDA-MI	80.1436	
34	799997	17080S5	Mon Aug	113	S		1	D	0.00001	M	Molar	10	5	Melanon	SK-MEL	85.4361	
35	799997	17080S5	Mon Aug	113	S		1	D	0.00001	M	Molar	10	8	Melanon	SK-MEL	106.017	
36	799997	17080S5	Mon Aug	113	S		1	D	0.00001	M	Molar	10	7	Melanon	SK-MEL	79.325	
37	799997	17080S5	Mon Aug	113	S		1	D	0.00001	M	Molar	10	21	Melanon	UACC-21	76.077	
38	799997	17080S5	Mon Aug	113	S		1	D	0.00001	M	Molar	10	20	Melanon	UACC-61	80.1276	
39	799997	17080S5	Mon Aug	113	S		1	D	0.00001	M	Molar	6	10	Ovarian (IGROV1	59.9407	
40	799997	17080S5	Mon Aug	113	S		1	D	0.00001	M	Molar	6	1	Ovarian (OVCAR-	70.1833	
41	799997	17080S5	Mon Aug	113	S		1	D	0.00001	M	Molar	6	2	Ovarian (OVCAR-	68.8713	
42	799997	17080S5	Mon Aug	113	S		1	D	0.00001	M	Molar	6	3	Ovarian (OVCAR-	121.728	
43	799997	17080S5	Mon Aug	113	S		1	D	0.00001	M	Molar	6	5	Ovarian (OVCAR-	57.2274	
44	799997	17080S5	Mon Aug	113	S		1	D	0.00001	M	Molar	5	2	Ovarian (NCI/ADF	79.3056	
45	799997	17080S5	Mon Aug	113	S		1	D	0.00001	M	Molar	6	11	Ovarian (SK-OV-3	87.9844	
46	799997	17080S5	Mon Aug	113	S		1	D	0.00001	M	Molar	9	18	Renal C:	786-0	87.2188	
47	799997	17080S5	Mon Aug	113	S		1	D	0.00001	M	Molar	9	13	Renal C:	A498	100.791	
48	799997	17080S5	Mon Aug	113	S		1	D	0.00001	M	Molar	9	23	Renal C:	ACHN	68.1073	
49	799997	17080S5	Mon Aug	113	S		1	D	0.00001	M	Molar	9	15	Renal C:	CAKI-1	79.3708	
50	799997	17080S5	Mon Aug	113	S		1	D	0.00001	M	Molar	9	16	Renal C:	RXF 393	101.925	
51	799997	17080S5	Mon Aug	113	S		1	D	0.00001	M	Molar	9	8	Renal C:	SN12C	57.6682	
52	799997	17080S5	Mon Aug	113	S		1	D	0.00001	M	Molar	9	24	Renal C:	TK-10	101.241	
53	799997	17080S5	Mon Aug	113	S		1	D	0.00001	M	Molar	9	4	Renal C:	UO-31	58.3531	
54	799997	17080S5	Mon Aug	113	S		1	D	0.00001	M	Molar	11	1	Prostate	PC-3	51.3971	
55	799997	17080S5	Mon Aug	113	S		1	D	0.00001	M	Molar	11	3	Prostate	DU-145	105.611	
56	799997	17080S5	Mon Aug	113	S		1	D	0.00001	M	Molar	5	1	Breast C	MCF7	34.6834	
57	799997	17080S5	Mon Aug	113	S		1	D	0.00001	M	Molar	5	5	Breast C	MDA-MI	94.4986	
58	799997	17080S5	Mon Aug	113	S		1	D	0.00001	M	Molar	5	6	Breast C	HS 578T	91.2629	
59	799997	17080S5	Mon Aug	113	S		1	D	0.00001	M	Molar	5	13	Breast C	BT-549	66.4165	
60	799997	17080S5	Mon Aug	113	S		1	D	0.00001	M	Molar	5	14	Breast C	T-47D	74.4048	
61	799997	17080S5	Mon Aug	113	S		1	D	0.00001	M	Molar	5	18	Breast C	MDA-MI	46.475	
62																	
63																	
64																	



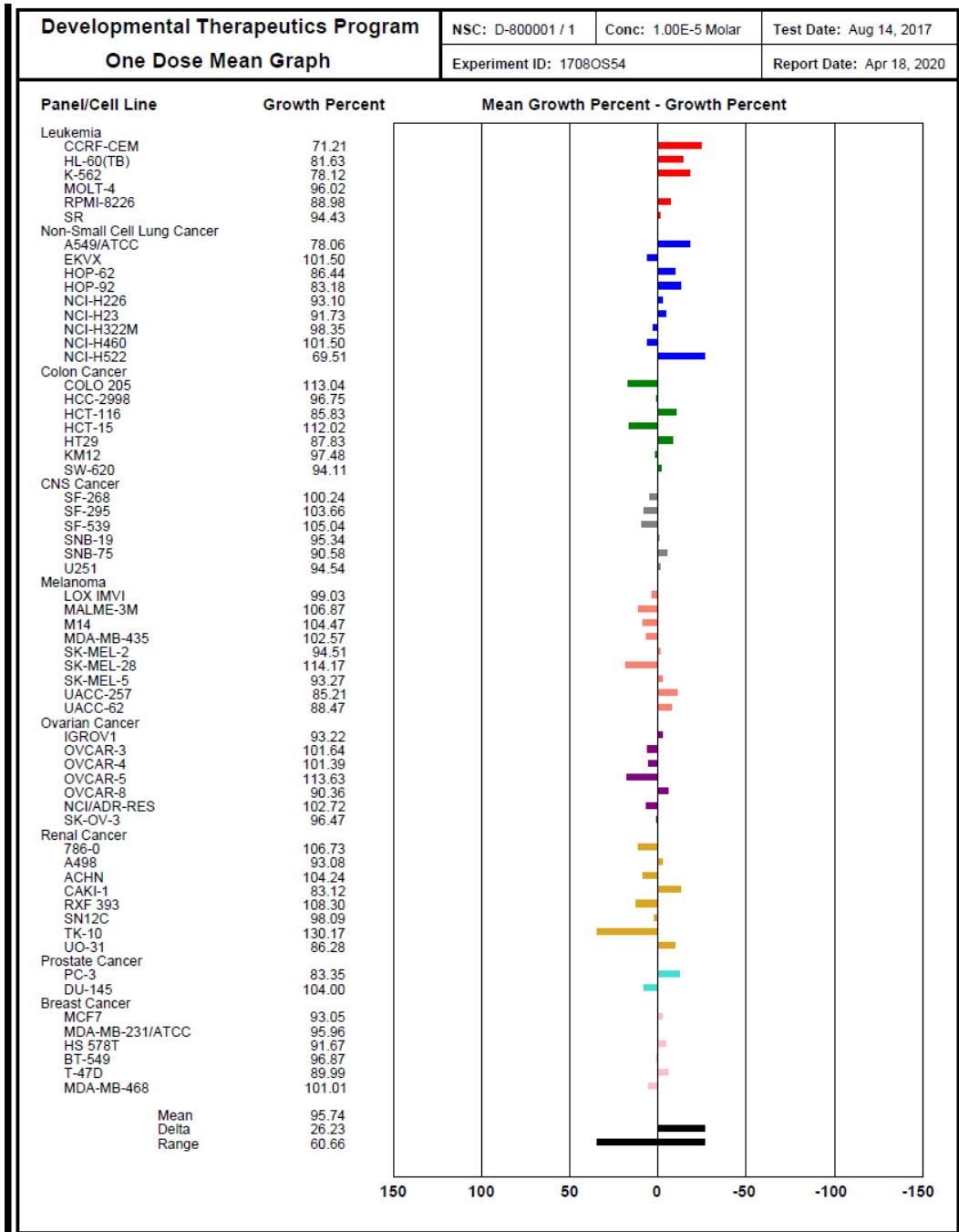
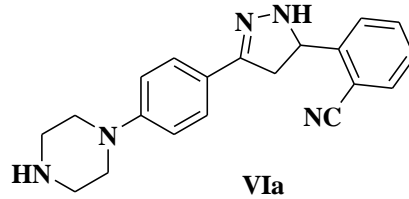
Vf

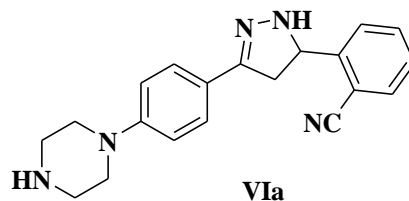




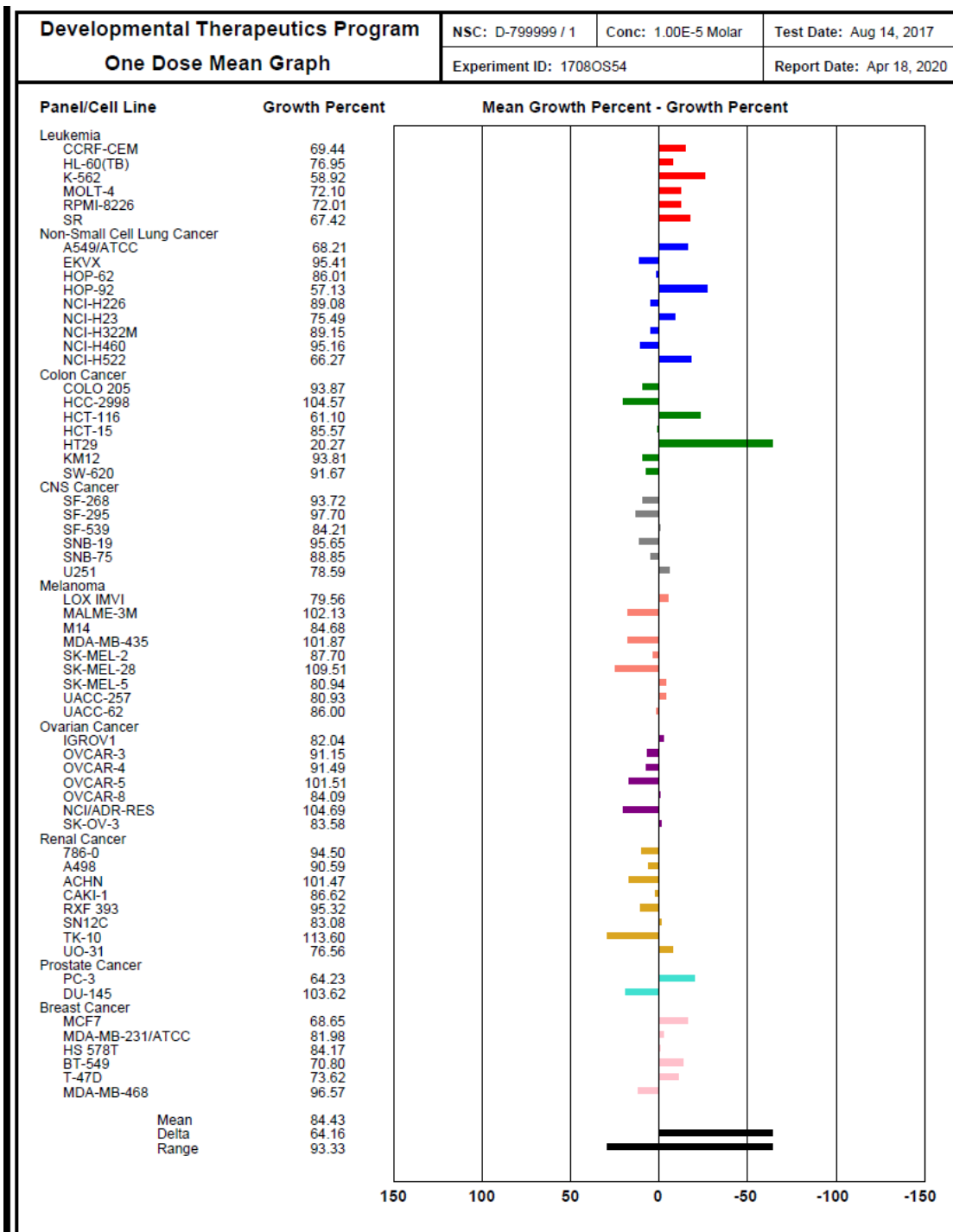
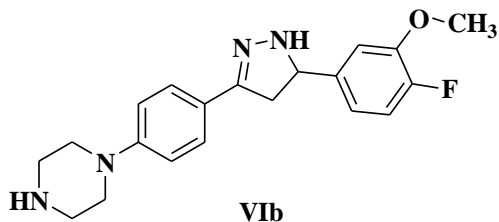
Vf

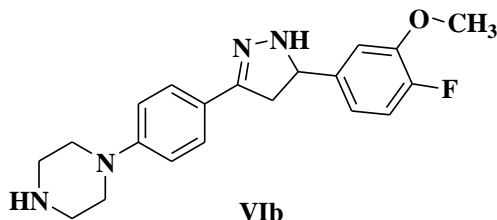
NSC															
A	B	C	D	E	F	G	H	I	J	K	L	M	N	O	P
1	NSC	EXPID	PLANDA	TESTSE	PREFIX	SAMPLE	DISCREI	CONC	CONCUI	CONCUI	PANELN	CELLNB	PANELN	CELLNA	GIPRCNT
2	799998	1708055	Mon Aug	123	S	1	D	0.00001	M	Molar	7	3	Leukemi.	CCRF-C	78.1606
3	799998	1708055	Mon Aug	123	S	1	D	0.00001	M	Molar	7	8	Leukemi.	HL-60(TE	79.2846
4	799998	1708055	Mon Aug	123	S	1	D	0.00001	M	Molar	7	5	Leukemi.	K-562	85.836
5	799998	1708055	Mon Aug	123	S	1	D	0.00001	M	Molar	7	6	Leukemi.	MOLT-4	91.6312
6	799998	1708055	Mon Aug	123	S	1	D	0.00001	M	Molar	7	10	Leukemi.	RPMI-82	97.3264
7	799998	1708055	Mon Aug	123	S	1	D	0.00001	M	Molar	7	19	Leukemi.	SR	92.9947
8	799998	1708055	Mon Aug	123	S	1	D	0.00001	M	Molar	1	4	Non-Sm.	A549(AT	78.7503
9	799998	1708055	Mon Aug	123	S	1	D	0.00001	M	Molar	1	8	Non-Sm.	EKVX	99.1057
10	799998	1708055	Mon Aug	123	S	1	D	0.00001	M	Molar	1	26	Non-Sm.	HOP-62	102.011
11	799998	1708055	Mon Aug	123	S	1	D	0.00001	M	Molar	1	29	Non-Sm.	HOP-92	82.3412
12	799998	1708055	Mon Aug	123	S	1	D	0.00001	M	Molar	1	13	Non-Sm.	NCH-H22	99.713
13	799998	1708055	Mon Aug	123	S	1	D	0.00001	M	Molar	1	1	Non-Sm.	NCI-H23	102.517
14	799998	1708055	Mon Aug	123	S	1	D	0.00001	M	Molar	1	17	Non-Sm.	NCI-H32	96.2614
15	799998	1708055	Mon Aug	123	S	1	D	0.00001	M	Molar	1	21	Non-Sm.	NCI-H46	106.014
16	799998	1708055	Mon Aug	123	S	1	D	0.00001	M	Molar	1	3	Non-Sm.	NCI-H52	78.8167
17	799998	1708055	Mon Aug	123	S	1	D	0.00001	M	Molar	4	10	Colon C.	COLO 20	111.888
18	799998	1708055	Mon Aug	123	S	1	D	0.00001	M	Molar	4	2	Colon C.	HCC-29C	100.88
19	799998	1708055	Mon Aug	123	S	1	D	0.00001	M	Molar	4	3	Colon C.	HCT-116	73.8715
20	799998	1708055	Mon Aug	123	S	1	D	0.00001	M	Molar	4	15	Colon C.	HCT-15	111.394
21	799998	1708055	Mon Aug	123	S	1	D	0.00001	M	Molar	4	1	Colon C.	HT29	86.4204
22	799998	1708055	Mon Aug	123	S	1	D	0.00001	M	Molar	4	17	Colon C.	KM12	105.342
23	799998	1708055	Mon Aug	123	S	1	D	0.00001	M	Molar	4	9	Colon C.	SW-620	105.588
24	799998	1708055	Mon Aug	123	S	1	D	0.00001	M	Molar	12	14	CNS Car	SF-268	100.919
25	799998	1708055	Mon Aug	123	S	1	D	0.00001	M	Molar	12	15	CNS Car	SF-295	101.945
26	799998	1708055	Mon Aug	123	S	1	D	0.00001	M	Molar	12	16	CNS Car	SF-539	101.294
27	799998	1708055	Mon Aug	123	S	1	D	0.00001	M	Molar	12	2	CNS Car	SNB-19	96.0684
28	799998	1708055	Mon Aug	123	S	1	D	0.00001	M	Molar	12	5	CNS Car	SNB-75	89.0759
29	799998	1708055	Mon Aug	123	S	1	D	0.00001	M	Molar	12	9	CNS Car	U251	95.0339
30	799998	1708055	Mon Aug	123	S	1	D	0.00001	M	Molar	10	1	Melanon	LOX IMV	103.218
31	799998	1708055	Mon Aug	123	S	1	D	0.00001	M	Molar	10	2	Melanon	MALME	99.98
32	799998	1708055	Mon Aug	123	S	1	D	0.00001	M	Molar	10	14	Melanon	M14	95.5348
33	799998	1708055	Mon Aug	123	S	1	D	0.00001	M	Molar	5	11	Melanon	MDA-MI	102.373
34	799998	1708055	Mon Aug	123	S	1	D	0.00001	M	Molar	10	5	Melanon	SK-MEL	91.6318
35	799998	1708055	Mon Aug	123	S	1	D	0.00001	M	Molar	10	8	Melanon	SK-MEL	115.561
36	799998	1708055	Mon Aug	123	S	1	D	0.00001	M	Molar	10	7	Melanon	SK-MEL	101.113
37	799998	1708055	Mon Aug	123	S	1	D	0.00001	M	Molar	10	21	Melanon	UACC-2	70.8639
38	799998	1708055	Mon Aug	123	S	1	D	0.00001	M	Molar	10	20	Melanon	UACC-6	92.014
39	799998	1708055	Mon Aug	123	S	1	D	0.00001	M	Molar	6	10	Ovarian (IGROW1	97.1688
40	799998	1708055	Mon Aug	123	S	1	D	0.00001	M	Molar	6	1	Ovarian (OVCAR-	106.217
41	799998	1708055	Mon Aug	123	S	1	D	0.00001	M	Molar	6	2	Ovarian (OVCAR-	110.546
42	799998	1708055	Mon Aug	123	S	1	D	0.00001	M	Molar	6	3	Ovarian (OVCAR-	111.843
43	799998	1708055	Mon Aug	123	S	1	D	0.00001	M	Molar	6	5	Ovarian (OVCAR-	95.3451
44	799998	1708055	Mon Aug	123	S	1	D	0.00001	M	Molar	5	2	Ovarian (NCIMADP	107.526
45	799998	1708055	Mon Aug	123	S	1	D	0.00001	M	Molar	6	11	Ovarian (SK-OV-3	96.685
46	799998	1708055	Mon Aug	123	S	1	D	0.00001	M	Molar	9	18	Renal C	786-0	103.378
47	799998	1708055	Mon Aug	123	S	1	D	0.00001	M	Molar	9	13	Renal C	A498	97.2198
48	799998	1708055	Mon Aug	123	S	1	D	0.00001	M	Molar	9	23	Renal C	ACHN	113.064
49	799998	1708055	Mon Aug	123	S	1	D	0.00001	M	Molar	9	15	Renal C	CAKI-1	86.1807
50	799998	1708055	Mon Aug	123	S	1	D	0.00001	M	Molar	9	16	Renal C	RXF 393	97.7834
51	799998	1708055	Mon Aug	123	S	1	D	0.00001	M	Molar	9	8	Renal C	SNI2C	99.0019
52	799998	1708055	Mon Aug	123	S	1	D	0.00001	M	Molar	9	24	Renal C	TK-10	95.834
53	799998	1708055	Mon Aug	123	S	1	D	0.00001	M	Molar	9	4	Renal C	UD-31	89.7822
54	799998	1708055	Mon Aug	123	S	1	D	0.00001	M	Molar	11	1	Prostate	PC-3	73.5632
55	799998	1708055	Mon Aug	123	S	1	D	0.00001	M	Molar	11	3	Prostate	DU-145	108.144
56	799998	1708055	Mon Aug	123	S	1	D	0.00001	M	Molar	5	1	Breast C	MCF7	99.378
57	799998	1708055	Mon Aug	123	S	1	D	0.00001	M	Molar	5	5	Breast C	MDA-MI	98.7594
58	799998	1708055	Mon Aug	123	S	1	D	0.00001	M	Molar	5	6	Breast C	HS 578T	99.1854
59	799998	1708055	Mon Aug	123	S	1	D	0.00001	M	Molar	5	13	Breast C	BT-549	90.8091
60	799998	1708055	Mon Aug	123	S	1	D	0.00001	M	Molar	5	14	Breast C	T-47D	118.118
61	799998	1708055	Mon Aug	123	S	1	D	0.00001	M	Molar	5	18	Breast C	MDA-MI	100.323
62															
63															



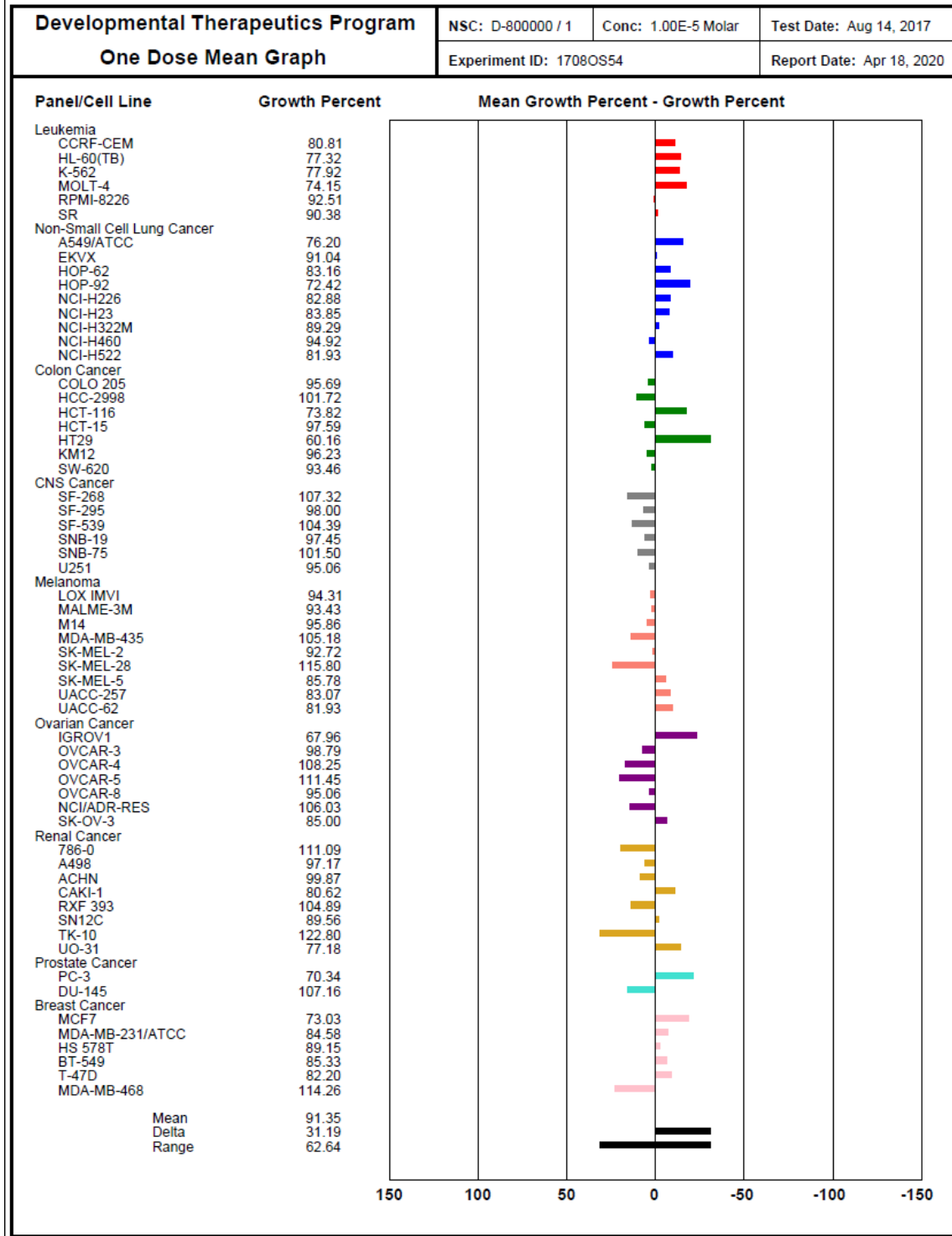
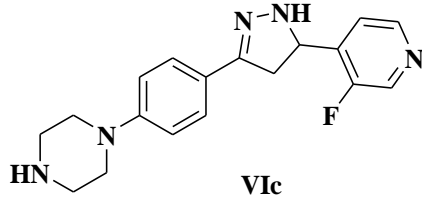


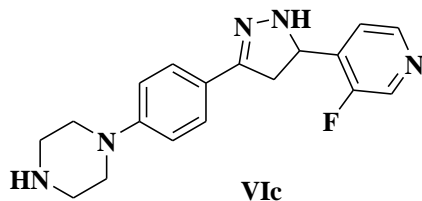
A1								NSC									
	A	B	C	D	E	F	G	H	I	J	K	L	M	N	O	P	
	NSC	EXPID	PLANDATE	TESTSE	PREFIX	SAMPLE	DISCREI	CONC	CONCUT	PANELA	CELLNB	PANELM	CELLNA	GIPRCNT			
2	800001	1708OS5	Mon Aug	153	S		1 D	0.00001	M	Molar	7	3	Leukemi. CCRF-C	71.2122			
3	800001	1708OS5	Mon Aug	153	S		1 D	0.00001	M	Molar	7	8	Leukemi. HL-60(TE	81.6321			
4	800001	1708OS5	Mon Aug	153	S		1 D	0.00001	M	Molar	7	5	Leukemi. K-562	78.1181			
5	800001	1708OS5	Mon Aug	153	S		1 D	0.00001	M	Molar	7	6	Leukemi. MOLT-4	96.0205			
6	800001	1708OS5	Mon Aug	153	S		1 D	0.00001	M	Molar	7	10	Leukemi. RPMI-82	88.9759			
7	800001	1708OS5	Mon Aug	153	S		1 D	0.00001	M	Molar	7	19	Leukemi. SF	94.4288			
8	800001	1708OS5	Mon Aug	153	S		1 D	0.00001	M	Molar	1	4	Non-Sm. A549/AT	78.0557			
9	800001	1708OS5	Mon Aug	153	S		1 D	0.00001	M	Molar	1	8	Non-Sm. EKVX	101.498			
10	800001	1708OS5	Mon Aug	153	S		1 D	0.00001	M	Molar	1	26	Non-Sm. HOP-62	86.4428			
11	800001	1708OS5	Mon Aug	153	S		1 D	0.00001	M	Molar	1	29	Non-Sm. HOP-92	83.1833			
12	800001	1708OS5	Mon Aug	153	S		1 D	0.00001	M	Molar	1	13	Non-Sm. NCI-H22	93.0984			
13	800001	1708OS5	Mon Aug	153	S		1 D	0.00001	M	Molar	1	1	Non-Sm. NCI-H23	91.7293			
14	800001	1708OS5	Mon Aug	153	S		1 D	0.00001	M	Molar	1	17	Non-Sm. NCI-H32	98.3467			
15	800001	1708OS5	Mon Aug	153	S		1 D	0.00001	M	Molar	1	21	Non-Sm. NCI-H46	101.504			
16	800001	1708OS5	Mon Aug	153	S		1 D	0.00001	M	Molar	1	3	Non-Sm. NCI-H52	69.5058			
17	800001	1708OS5	Mon Aug	153	S		1 D	0.00001	M	Molar	4	10	Colon C. COLO 20	113.037			
18	800001	1708OS5	Mon Aug	153	S		1 D	0.00001	M	Molar	4	2	Colon C. HCC-29C	96.7456			
19	800001	1708OS5	Mon Aug	153	S		1 D	0.00001	M	Molar	4	3	Colon C. HCT-116	85.8348			
20	800001	1708OS5	Mon Aug	153	S		1 D	0.00001	M	Molar	4	15	Colon C. HCT-15	112.025			
21	800001	1708OS5	Mon Aug	153	S		1 D	0.00001	M	Molar	4	1	Colon C. HT29	87.8292			
22	800001	1708OS5	Mon Aug	153	S		1 D	0.00001	M	Molar	4	17	Colon C. KM12	97.48			
23	800001	1708OS5	Mon Aug	153	S		1 D	0.00001	M	Molar	4	9	Colon C. SW-620	94.1092			
24	800001	1708OS5	Mon Aug	153	S		1 D	0.00001	M	Molar	12	14	CNS Car. SF-268	100.243			
25	800001	1708OS5	Mon Aug	153	S		1 D	0.00001	M	Molar	12	15	CNS Car. SF-295	103.663			
26	800001	1708OS5	Mon Aug	153	S		1 D	0.00001	M	Molar	12	16	CNS Car. SF-539	105.041			
27	800001	1708OS5	Mon Aug	153	S		1 D	0.00001	M	Molar	12	2	CNS Car. SNB-19	95.3413			
28	800001	1708OS5	Mon Aug	153	S		1 D	0.00001	M	Molar	12	5	CNS Car. SNB-75	90.5763			
29	800001	1708OS5	Mon Aug	153	S		1 D	0.00001	M	Molar	12	9	CNS Car. U251	94.5448			
30	800001	1708OS5	Mon Aug	153	S		1 D	0.00001	M	Molar	10	1	Melanon. LOX IMV	99.0253			
31	800001	1708OS5	Mon Aug	153	S		1 D	0.00001	M	Molar	10	2	Melanon. MALME	106.868			
32	800001	1708OS5	Mon Aug	153	S		1 D	0.00001	M	Molar	10	14	Melanon. M14	104.469			
33	800001	1708OS5	Mon Aug	153	S		1 D	0.00001	M	Molar	5	11	Melanon. MDA-MI	102.568			
34	800001	1708OS5	Mon Aug	153	S		1 D	0.00001	M	Molar	10	5	Melanon. SK-MEL	94.5115			
35	800001	1708OS5	Mon Aug	153	S		1 D	0.00001	M	Molar	10	8	Melanon. SK-MEL	114.171			
36	800001	1708OS5	Mon Aug	153	S		1 D	0.00001	M	Molar	10	7	Melanon. SK-MEL	93.2679			
37	800001	1708OS5	Mon Aug	153	S		1 D	0.00001	M	Molar	10	21	Melanon. UACC-2	85.2072			
38	800001	1708OS5	Mon Aug	153	S		1 D	0.00001	M	Molar	10	20	Melanon. UACC-6	88.4675			
39	800001	1708OS5	Mon Aug	153	S		1 D	0.00001	M	Molar	6	10	Ovarian (IGROV1	93.2241			
40	800001	1708OS5	Mon Aug	153	S		1 D	0.00001	M	Molar	6	1	Ovarian (OVCAR-	101.644			
41	800001	1708OS5	Mon Aug	153	S		1 D	0.00001	M	Molar	6	2	Ovarian (OVCAR-	101.389			
42	800001	1708OS5	Mon Aug	153	S		1 D	0.00001	M	Molar	6	3	Ovarian (OVCAR-	113.627			
43	800001	1708OS5	Mon Aug	153	S		1 D	0.00001	M	Molar	6	5	Ovarian (OVCAR-	90.3568			
44	800001	1708OS5	Mon Aug	153	S		1 D	0.00001	M	Molar	5	2	Ovarian (NCI/ADF	102.721			
45	800001	1708OS5	Mon Aug	153	S		1 D	0.00001	M	Molar	6	11	Ovarian (SK-OV-3	96.4726			
46	800001	1708OS5	Mon Aug	153	S		1 D	0.00001	M	Molar	9	18	Renal C ₂ 786-0	106.733			
47	800001	1708OS5	Mon Aug	153	S		1 D	0.00001	M	Molar	9	13	Renal C ₂ A498	93.0829			
48	800001	1708OS5	Mon Aug	153	S		1 D	0.00001	M	Molar	9	23	Renal C ₂ ACHN	104.241			
49	800001	1708OS5	Mon Aug	153	S		1 D	0.00001	M	Molar	9	15	Renal C ₂ CAKI-1	83.1227			
50	800001	1708OS5	Mon Aug	153	S		1 D	0.00001	M	Molar	9	16	Renal C ₂ RXF 393	108.304			
51	800001	1708OS5	Mon Aug	153	S		1 D	0.00001	M	Molar	9	8	Renal C ₂ SN12C	98.0871			
52	800001	1708OS5	Mon Aug	153	S		1 D	0.00001	M	Molar	9	24	Renal C ₂ TK-10	130.172			
53	800001	1708OS5	Mon Aug	153	S		1 D	0.00001	M	Molar	9	4	Renal C ₂ UO-31	86.2805			
54	800001	1708OS5	Mon Aug	153	S		1 D	0.00001	M	Molar	11	1	Prostate. PC-3	83.346			
55	800001	1708OS5	Mon Aug	153	S		1 D	0.00001	M	Molar	11	3	Prostate. DU-145	104			
56	800001	1708OS5	Mon Aug	153	S		1 D	0.00001	M	Molar	5	1	Breast C. MCF7	93.0491			
57	800001	1708OS5	Mon Aug	153	S		1 D	0.00001	M	Molar	5	5	Breast C. MDA-MI	95.9613			
58	800001	1708OS5	Mon Aug	153	S		1 D	0.00001	M	Molar	5	6	Breast C. HS 578T	91.6742			
59	800001	1708OS5	Mon Aug	153	S		1 D	0.00001	M	Molar	5	13	Breast C. BT-549	96.8658			
60	800001	1708OS5	Mon Aug	153	S		1 D	0.00001	M	Molar	5	14	Breast C. T-47D	89.9887			
61	800001	1708OS5	Mon Aug	153	S		1 D	0.00001	M	Molar	5	18	Breast C. MDA-MI	101.01			
62																	





NSC															
A	B	C	D	E	F	G	H	I	J	K	L	M	N	O	P
1	NSC	EXPID	PLAND	TESTSE	PREFIX	SAMPLE	DISCREI	CONC	CONCUI	CONCUI	PANELN	CELLNB	PANELM	CELLNA	GIPRCNT
2	799999	1708DS5	Mon Aug	133	S	1	D	0.00001	M	Molar	7	3	Leukemi-CCRF-C	69.4377	
3	799999	1708DS5	Mon Aug	133	S	1	D	0.00001	M	Molar	7	8	Leukemi-HL-60(T	76.9489	
4	799999	1708DS5	Mon Aug	133	S	1	D	0.00001	M	Molar	7	5	Leukemi-K-562	58.915	
5	799999	1708DS5	Mon Aug	133	S	1	D	0.00001	M	Molar	7	6	Leukemi-MOLT-4	72.1014	
6	799999	1708DS5	Mon Aug	133	S	1	D	0.00001	M	Molar	7	10	Leukemi-RPMI-82	72.0067	
7	799999	1708DS5	Mon Aug	133	S	1	D	0.00001	M	Molar	7	19	Leukemi-SR	67.4222	
8	799999	1708DS5	Mon Aug	133	S	1	D	0.00001	M	Molar	1	4	Non-Sm-A549/AT	68.2079	
9	799999	1708DS5	Mon Aug	133	S	1	D	0.00001	M	Molar	1	8	Non-Sm-EKVX	95.4054	
10	799999	1708DS5	Mon Aug	133	S	1	D	0.00001	M	Molar	1	26	Non-Sm-HOP-62	86.0135	
11	799999	1708DS5	Mon Aug	133	S	1	D	0.00001	M	Molar	1	29	Non-Sm-HOP-92	57.1292	
12	799999	1708DS5	Mon Aug	133	S	1	D	0.00001	M	Molar	1	13	Non-Sm-NCI-H22	89.0776	
13	799999	1708DS5	Mon Aug	133	S	1	D	0.00001	M	Molar	1	1	Non-Sm-NCI-H23	75.4886	
14	799999	1708DS5	Mon Aug	133	S	1	D	0.00001	M	Molar	1	17	Non-Sm-NCI-H32	89.1519	
15	799999	1708DS5	Mon Aug	133	S	1	D	0.00001	M	Molar	1	21	Non-Sm-NCI-H46	95.1636	
16	799999	1708DS5	Mon Aug	133	S	1	D	0.00001	M	Molar	1	3	Non-Sm-NCI-H52	66.2655	
17	799999	1708DS5	Mon Aug	133	S	1	D	0.00001	M	Molar	4	10	Colon C-COLO 20	93.8722	
18	799999	1708DS5	Mon Aug	133	S	1	D	0.00001	M	Molar	4	2	Colon C-HCC-29	104.565	
19	799999	1708DS5	Mon Aug	133	S	1	D	0.00001	M	Molar	4	3	Colon C-HCT-116	61.1043	
20	799999	1708DS5	Mon Aug	133	S	1	D	0.00001	M	Molar	4	15	Colon C-HCT-15	85.5705	
21	799999	1708DS5	Mon Aug	133	S	1	D	0.00001	M	Molar	4	1	Colon C-HT29	20.2691	
22	799999	1708DS5	Mon Aug	133	S	1	D	0.00001	M	Molar	4	17	Colon C-KM12	93.8055	
23	799999	1708DS5	Mon Aug	133	S	1	D	0.00001	M	Molar	4	9	Colon C-Sw-620	91.6712	
24	799999	1708DS5	Mon Aug	133	S	1	D	0.00001	M	Molar	12	14	CNS Car SF-268	93.7175	
25	799999	1708DS5	Mon Aug	133	S	1	D	0.00001	M	Molar	12	15	CNS Car SF-295	97.695	
26	799999	1708DS5	Mon Aug	133	S	1	D	0.00001	M	Molar	12	16	CNS Car SF-539	84.2062	
27	799999	1708DS5	Mon Aug	133	S	1	D	0.00001	M	Molar	12	2	CNS Car SNB-19	95.6468	
28	799999	1708DS5	Mon Aug	133	S	1	D	0.00001	M	Molar	12	5	CNS Car SNB-75	88.8473	
29	799999	1708DS5	Mon Aug	133	S	1	D	0.00001	M	Molar	12	9	CNS Car U251	78.5884	
30	799999	1708DS5	Mon Aug	133	S	1	D	0.00001	M	Molar	10	1	Melanon LOK-IMV	79.5577	
31	799999	1708DS5	Mon Aug	133	S	1	D	0.00001	M	Molar	10	2	Melanon MALME	102.129	
32	799999	1708DS5	Mon Aug	133	S	1	D	0.00001	M	Molar	10	14	Melanon M14	84.6833	
33	799999	1708DS5	Mon Aug	133	S	1	D	0.00001	M	Molar	5	11	Melanon MDA-MI	101.869	
34	799999	1708DS5	Mon Aug	133	S	1	D	0.00001	M	Molar	10	5	Melanon SK-MEL	87.6977	
35	799999	1708DS5	Mon Aug	133	S	1	D	0.00001	M	Molar	10	8	Melanon SK-MEL	109.512	
36	799999	1708DS5	Mon Aug	133	S	1	D	0.00001	M	Molar	10	7	Melanon SK-MEL	80.9433	
37	799999	1708DS5	Mon Aug	133	S	1	D	0.00001	M	Molar	10	21	Melanon UACC-21	80.9349	
38	799999	1708DS5	Mon Aug	133	S	1	D	0.00001	M	Molar	10	20	Melanon UACC-62	86.0022	
39	799999	1708DS5	Mon Aug	133	S	1	D	0.00001	M	Molar	6	10	Ovarian (IGROV1	82.0413	
40	799999	1708DS5	Mon Aug	133	S	1	D	0.00001	M	Molar	6	1	Ovarian (OVCAR-	91.1451	
41	799999	1708DS5	Mon Aug	133	S	1	D	0.00001	M	Molar	6	2	Ovarian (OVCAR-	91.4863	
42	799999	1708DS5	Mon Aug	133	S	1	D	0.00001	M	Molar	6	3	Ovarian (OVCAR-	101.512	
43	799999	1708DS5	Mon Aug	133	S	1	D	0.00001	M	Molar	6	5	Ovarian (OVCAR-	84.0872	
44	799999	1708DS5	Mon Aug	133	S	1	D	0.00001	M	Molar	5	2	Ovarian (NCIHADF	104.69	
45	799999	1708DS5	Mon Aug	133	S	1	D	0.00001	M	Molar	6	11	Ovarian (SK-OV-3	83.5786	
46	799999	1708DS5	Mon Aug	133	S	1	D	0.00001	M	Molar	9	18	Renal C ₂ 786-0	94.5011	
47	799999	1708DS5	Mon Aug	133	S	1	D	0.00001	M	Molar	9	13	Renal C ₂ A498	90.5925	
48	799999	1708DS5	Mon Aug	133	S	1	D	0.00001	M	Molar	9	23	Renal C ₂ ACHN	101.474	
49	799999	1708DS5	Mon Aug	133	S	1	D	0.00001	M	Molar	9	15	Renal C ₂ CAK1-1	86.6237	
50	799999	1708DS5	Mon Aug	133	S	1	D	0.00001	M	Molar	9	16	Renal C ₂ RXF 393	95.3233	
51	799999	1708DS5	Mon Aug	133	S	1	D	0.00001	M	Molar	9	8	Renal C ₂ SN12C	83.0777	
52	799999	1708DS5	Mon Aug	133	S	1	D	0.00001	M	Molar	9	24	Renal C ₂ TK-10	113.604	
53	799999	1708DS5	Mon Aug	133	S	1	D	0.00001	M	Molar	9	4	Renal C ₂ UD-31	76.5557	
54	799999	1708DS5	Mon Aug	133	S	1	D	0.00001	M	Molar	11	1	Prostate PC-3	64.2337	
55	799999	1708DS5	Mon Aug	133	S	1	D	0.00001	M	Molar	11	3	Prostate DU-145	103.625	
56	799999	1708DS5	Mon Aug	133	S	1	D	0.00001	M	Molar	5	1	Breast C MCF7	68.6514	
57	799999	1708DS5	Mon Aug	133	S	1	D	0.00001	M	Molar	5	5	Breast C MDA-MI	81.9785	
58	799999	1708DS5	Mon Aug	133	S	1	D	0.00001	M	Molar	5	6	Breast C HS 578T	84.1707	
59	799999	1708DS5	Mon Aug	133	S	1	D	0.00001	M	Molar	5	13	Breast C BT-549	70.804	
60	799999	1708DS5	Mon Aug	133	S	1	D	0.00001	M	Molar	5	14	Breast C T-47D	73.6154	
61	799999	1708DS5	Mon Aug	133	S	1	D	0.00001	M	Molar	5	18	Breast C MDA-MI	96.5683	
62															
63															
64															





NSC															
A	B	C	D	E	F	G	H	I	J	K	L	M	N	O	P
1	NSC	EXPID	PLANDA	TESTSE	PREFIX	SAMPLE	DISCREI	CONC	CONCUR	CONCUR	PANELN	CELLNB	PANELN	CELLNA	GIPRCNT
2	800000	1708OS5	Mon Aug	143	S		1	D	0.00001	M	Molar	7	3	Leukemi. CCRF-C	80.8113
3	800000	1708OS5	Mon Aug	143	S		1	D	0.00001	M	Molar	7	8	Leukemi. HL-60(TE	77.3207
4	800000	1708OS5	Mon Aug	143	S		1	D	0.00001	M	Molar	7	5	Leukemi. K-562	77.9245
5	800000	1708OS5	Mon Aug	143	S		1	D	0.00001	M	Molar	7	6	Leukemi. MOLT-4	74.1549
6	800000	1708OS5	Mon Aug	143	S		1	D	0.00001	M	Molar	7	10	Leukemi. RPMI-82	92.5113
7	800000	1708OS5	Mon Aug	143	S		1	D	0.00001	M	Molar	7	19	Leukemi. SR	90.3909
8	800000	1708OS5	Mon Aug	143	S		1	D	0.00001	M	Molar	1	4	Non-Sm. A549/AT	76.1998
9	800000	1708OS5	Mon Aug	143	S		1	D	0.00001	M	Molar	1	8	Non-Sm. EK VX	91.0423
10	800000	1708OS5	Mon Aug	143	S		1	D	0.00001	M	Molar	1	26	Non-Sm. HOP-62	83.1608
11	800000	1708OS5	Mon Aug	143	S		1	D	0.00001	M	Molar	1	29	Non-Sm. HOP-92	72.4175
12	800000	1708OS5	Mon Aug	143	S		1	D	0.00001	M	Molar	1	13	Non-Sm. NCI-H22	82.8754
13	800000	1708OS5	Mon Aug	143	S		1	D	0.00001	M	Molar	1	1	Non-Sm. NCI-H23	83.846
14	800000	1708OS5	Mon Aug	143	S		1	D	0.00001	M	Molar	1	17	Non-Sm. NCI-H32	89.2938
15	800000	1708OS5	Mon Aug	143	S		1	D	0.00001	M	Molar	1	21	Non-Sm. NCI-H46	94.9227
16	800000	1708OS5	Mon Aug	143	S		1	D	0.00001	M	Molar	1	3	Non-Sm. NCI-H52	81.9278
17	800000	1708OS5	Mon Aug	143	S		1	D	0.00001	M	Molar	4	10	Colon C. COLO 20	95.6917
18	800000	1708OS5	Mon Aug	143	S		1	D	0.00001	M	Molar	4	2	Colon C. HCC-29C	101.719
19	800000	1708OS5	Mon Aug	143	S		1	D	0.00001	M	Molar	4	3	Colon C. HCT-116	73.8224
20	800000	1708OS5	Mon Aug	143	S		1	D	0.00001	M	Molar	4	15	Colon C. HCT-15	97.5886
21	800000	1708OS5	Mon Aug	143	S		1	D	0.00001	M	Molar	4	1	Colon C. HT29	60.158
22	800000	1708OS5	Mon Aug	143	S		1	D	0.00001	M	Molar	4	17	Colon C. KM12	96.232
23	800000	1708OS5	Mon Aug	143	S		1	D	0.00001	M	Molar	4	9	Colon C. Sw-620	93.4636
24	800000	1708OS5	Mon Aug	143	S		1	D	0.00001	M	Molar	12	14	CNS Car SF-268	107.316
25	800000	1708OS5	Mon Aug	143	S		1	D	0.00001	M	Molar	12	15	CNS Car SF-295	98.0044
26	800000	1708OS5	Mon Aug	143	S		1	D	0.00001	M	Molar	12	16	CNS Car SF-539	104.387
27	800000	1708OS5	Mon Aug	143	S		1	D	0.00001	M	Molar	12	2	CNS Car SNB-19	97.4539
28	800000	1708OS5	Mon Aug	143	S		1	D	0.00001	M	Molar	12	5	CNS Car SNB-75	101.499
29	800000	1708OS5	Mon Aug	143	S		1	D	0.00001	M	Molar	12	9	CNS Car U251	95.0588
30	800000	1708OS5	Mon Aug	143	S		1	D	0.00001	M	Molar	10	1	Melanon LOX-IMV	94.3125
31	800000	1708OS5	Mon Aug	143	S		1	D	0.00001	M	Molar	10	2	Melanon MALME	93.4318
32	800000	1708OS5	Mon Aug	143	S		1	D	0.00001	M	Molar	10	14	Melanon M14	95.8636
33	800000	1708OS5	Mon Aug	143	S		1	D	0.00001	M	Molar	5	11	Melanon MDA-MI	105.182
34	800000	1708OS5	Mon Aug	143	S		1	D	0.00001	M	Molar	10	5	Melanon SK-MEL	92.7206
35	800000	1708OS5	Mon Aug	143	S		1	D	0.00001	M	Molar	10	8	Melanon SK-MEL	115.799
36	800000	1708OS5	Mon Aug	143	S		1	D	0.00001	M	Molar	10	7	Melanon SK-MEL	85.7776
37	800000	1708OS5	Mon Aug	143	S		1	D	0.00001	M	Molar	10	21	Melanon UACC-25	83.0735
38	800000	1708OS5	Mon Aug	143	S		1	D	0.00001	M	Molar	10	20	Melanon UACC-62	81.9328
39	800000	1708OS5	Mon Aug	143	S		1	D	0.00001	M	Molar	6	10	Ovarian (IGROV1	67.9582
40	800000	1708OS5	Mon Aug	143	S		1	D	0.00001	M	Molar	6	1	Ovarian (OVCAR-	98.7926
41	800000	1708OS5	Mon Aug	143	S		1	D	0.00001	M	Molar	6	2	Ovarian (OVCAR-	108.252
42	800000	1708OS5	Mon Aug	143	S		1	D	0.00001	M	Molar	6	3	Ovarian (OVCAR-	111.455
43	800000	1708OS5	Mon Aug	143	S		1	D	0.00001	M	Molar	6	5	Ovarian (OVCAR-	95.0576
44	800000	1708OS5	Mon Aug	143	S		1	D	0.00001	M	Molar	5	2	Ovarian (NCI/ADF	106.035
45	800000	1708OS5	Mon Aug	143	S		1	D	0.00001	M	Molar	6	11	Ovarian (SK-OV-3	85
46	800000	1708OS5	Mon Aug	143	S		1	D	0.00001	M	Molar	9	18	Renal C ₂ 786-0	111.087
47	800000	1708OS5	Mon Aug	143	S		1	D	0.00001	M	Molar	9	13	Renal C ₂ A498	97.1731
48	800000	1708OS5	Mon Aug	143	S		1	D	0.00001	M	Molar	9	23	Renal C ₂ ACHN	99.8655
49	800000	1708OS5	Mon Aug	143	S		1	D	0.00001	M	Molar	9	15	Renal C ₂ CAKI-1	80.6225
50	800000	1708OS5	Mon Aug	143	S		1	D	0.00001	M	Molar	9	16	Renal C ₂ RFX 393	104.893
51	800000	1708OS5	Mon Aug	143	S		1	D	0.00001	M	Molar	9	8	Renal C ₂ SN12C	89.5574
52	800000	1708OS5	Mon Aug	143	S		1	D	0.00001	M	Molar	9	24	Renal C ₂ TK-10	122.802
53	800000	1708OS5	Mon Aug	143	S		1	D	0.00001	M	Molar	9	4	Renal C ₂ UO-31	77.183
54	800000	1708OS5	Mon Aug	143	S		1	D	0.00001	M	Molar	11	1	Prostate PC-3	70.3411
55	800000	1708OS5	Mon Aug	143	S		1	D	0.00001	M	Molar	11	3	Prostate DU-145	107.156
56	800000	1708OS5	Mon Aug	143	S		1	D	0.00001	M	Molar	5	1	Breast C MCF7	73.0257
57	800000	1708OS5	Mon Aug	143	S		1	D	0.00001	M	Molar	5	5	Breast C MDA-MI	84.5839
58	800000	1708OS5	Mon Aug	143	S		1	D	0.00001	M	Molar	5	6	Breast C HS 578T	89.1513
59	800000	1708OS5	Mon Aug	143	S		1	D	0.00001	M	Molar	5	13	Breast C BT-549	85.3253
60	800000	1708OS5	Mon Aug	143	S		1	D	0.00001	M	Molar	5	14	Breast C T-47D	82.202
61	800000	1708OS5	Mon Aug	143	S		1	D	0.00001	M	Molar	5	18	Breast C MDA-MI	114.258
62															
63															
64															

