

Supplementary data

# The biotechnological potential of *Pediococcus* ssp. isolated from Kombucha microbial consortium

Camelia Filofteia Diguță<sup>1</sup>, George Daniel Nițoi<sup>1</sup>, Florentina Matei<sup>1\*</sup>, Gabriela Luță<sup>1</sup> and Călina Petruța Cornea<sup>1</sup>

Faculty of Biotechnologies, University of Agronomic Sciences and Veterinary Medicine of Bucharest, 011464, Romania; camifilo@yahoo.com (C.F.D); daniel.nitoi@gmail.com (G.D.N); florentina.matei@biotehnologii.usamv.ro (F.M); gluta@yahoo.com (G.L); pccornea@yahoo.com (C.P.C)

\* Correspondence: florentina.matei@biotehnologii.usamv.ro

## 2. Materials and Methods

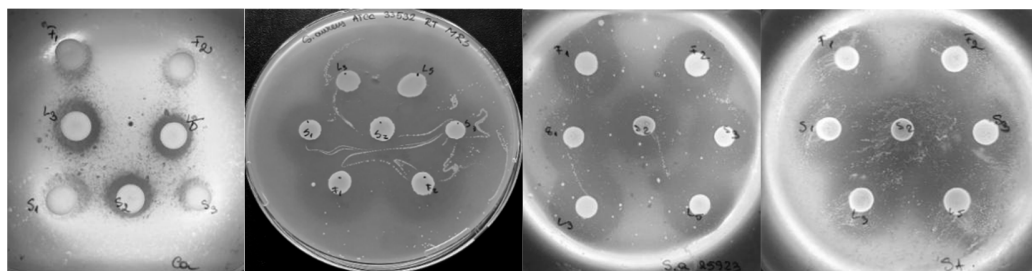
### 2.1. Microorganisms

#### Sequencing Results for F1 and F2

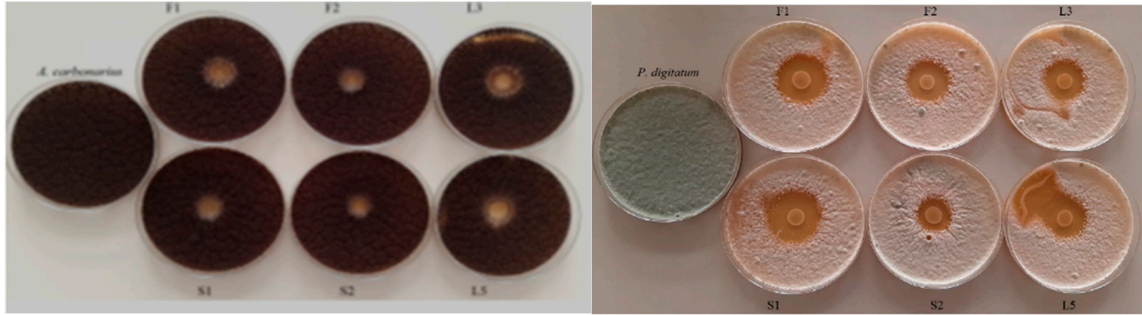
**Table S1.** Results of the molecular identification of Kombucha LAB F1 and F2 by 16S rDNA sequencing with Lac primers (according to Matei et al. 2018 [19])

Sequences ID	% Sequence Alignment ( <a href="https://www.ebi.ac.uk/Tools/msa/clustalo/">https://www.ebi.ac.uk/Tools/msa/clustalo/</a> )	Identity (%) ( <a href="https://blast.ncbi.nlm.nih.gov/Blast.cgi">https://blast.ncbi.nlm.nih.gov/Blast.cgi</a> )
F1_LacF	95.82	<i>Pediococcus pentosaceus</i> (100%)
F1_LacR		<i>Pediococcus pentosaceus</i> (99.29%)
F2_LacF	95.77	<i>Pediococcus acidilactici</i> (99.32%)
F2_LacR		<i>Pediococcus acidilactici</i> (100%)

### 3.3. Inhibitory activity of Kombucha LAB on pathogenic microorganisms

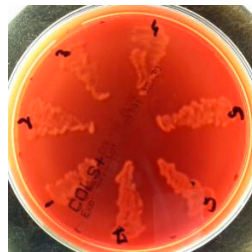


**Figure S1.** On-plate aspects of the Kombucha LAB inhibitory activity on *Candida albicans* ATCC 10231 (Ca), *Staphylococcus aureus* ATCC 33592 methicilin resistant (Sa 33592), *Staphylococcus aureus* ATCC 25923 methicilin sensitive (Sa 25923), *Salmonella typhimurium* ATCC 14028 (St) tested by adapted disk diffusion assay.



**Figure S2.** Aspects of the Kombucha LAB inhibitory activity on *Aspergillus carbonarius* MI 15 (left) and *Penicillium digitatum* MI 22 (right) tested by adapted disk diffusion assay.

### 3.4. Hemolytic and antioxidant activity of Kombucha LAB Strains



**Figure S3.** On-plate test of haemolytic activity of Kombucha LAB isolates on blood agar medium (1- S1; 2- S2; 3- S3; 4-L3; 5-L5; 6-F1; 7-F2).