

Supplementary Materials

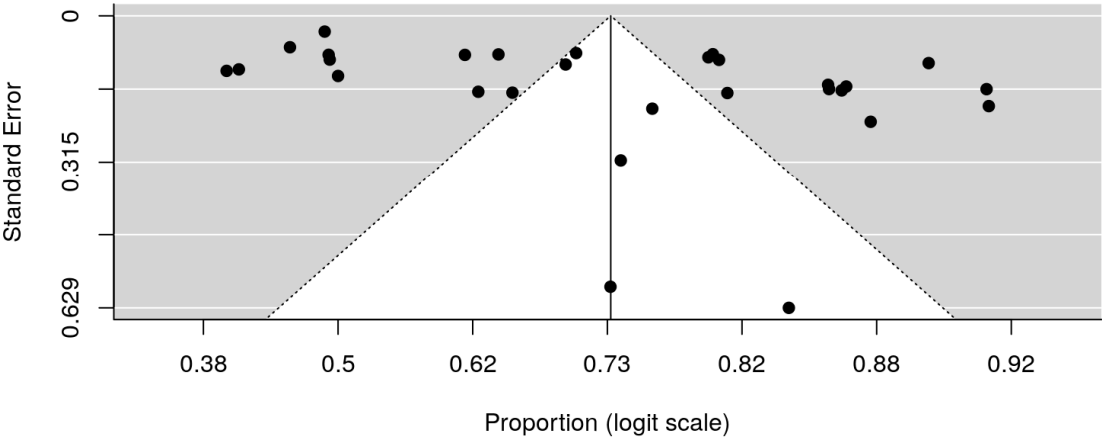


Figure 1. Funnel plot of proportional Meta-Analysis to evaluate the risk of publication bias in assessing the proportion of MS lesion with the central vein sign.

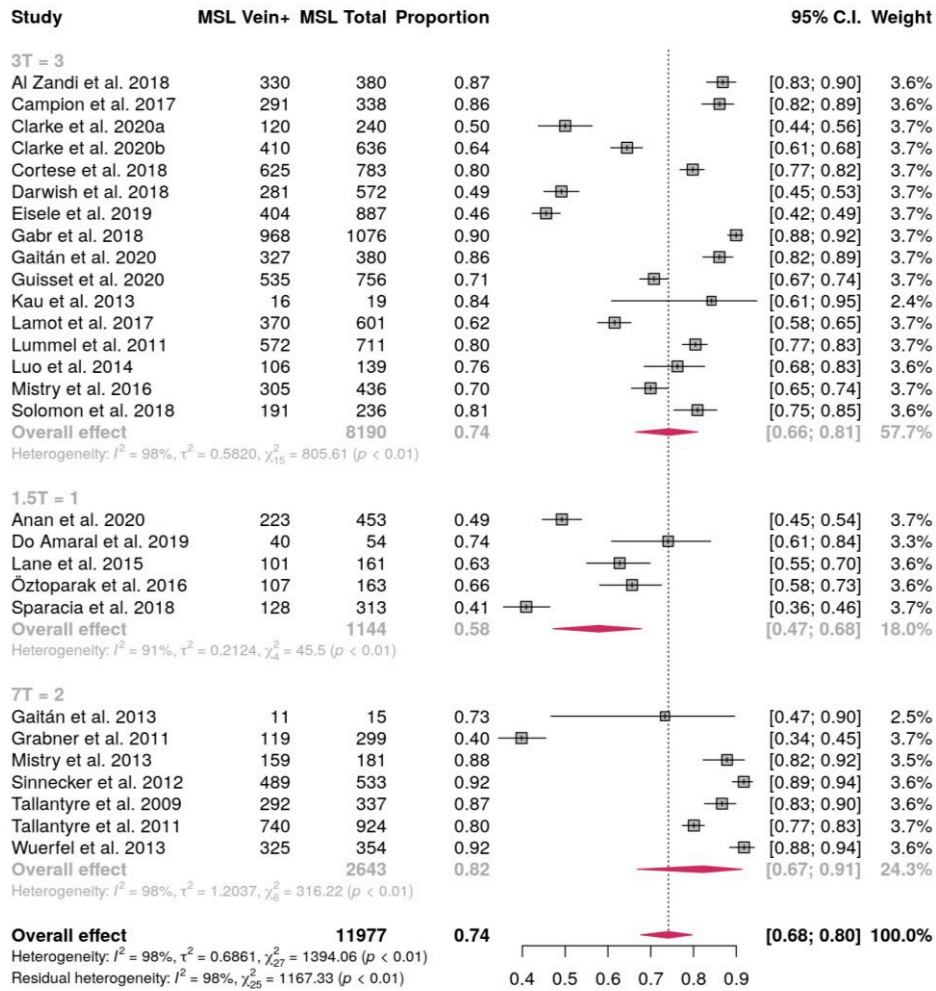


Figure 2. Forest plot of the sub-group analysis based on the scanner field strength (1.5T, 3T or 7T) showing the proportional Meta-Analysis of the pooled proportion of MS lesion with central vein sign (MSL Vein+).

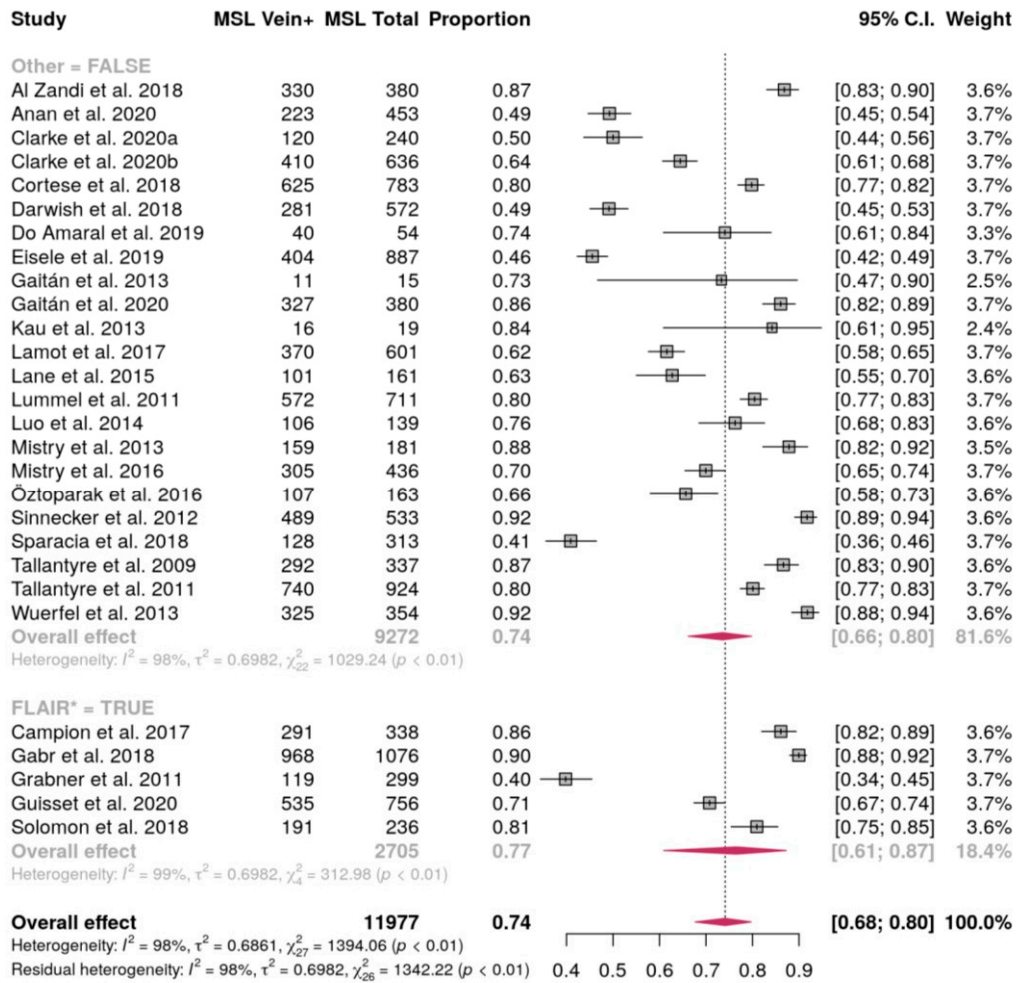


Figure 3. Forest plot of the sub-group analysis based on the post-processing technique used (FLAIR* vs. others) showing the proportional Meta-Analysis of the pooled proportion of MS lesion with central vein sign (MSL Vein+).

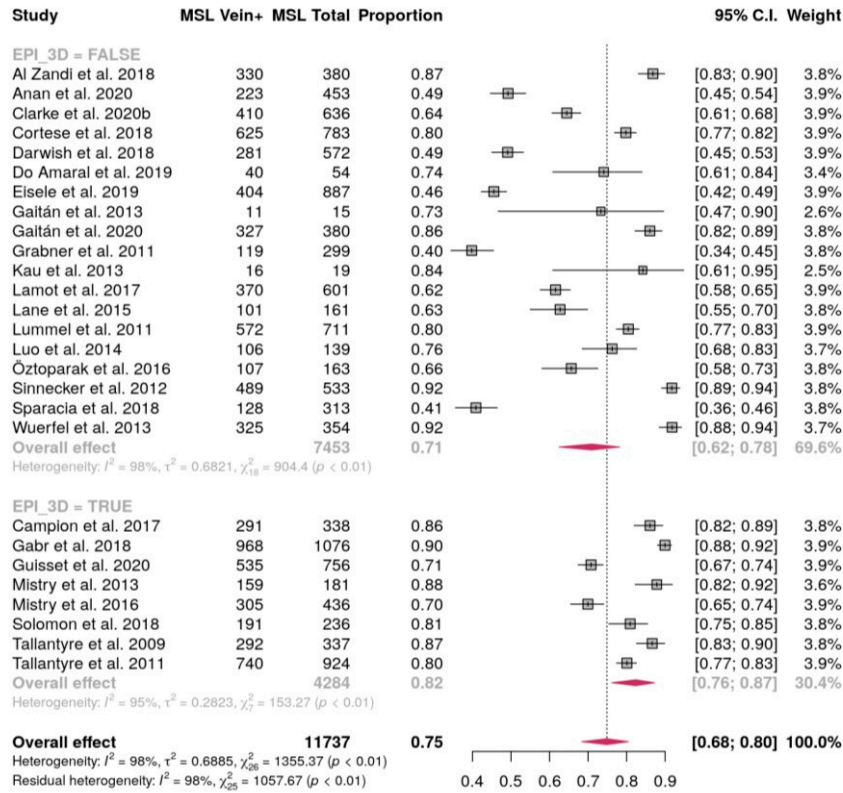


Figure 4. Forest plot of the sub-group analysis based on the MRI sequence performed (3D-EPI vs. others) showing the proportional Meta-Analysis of the pooled proportion of MS lesion with central vein sign (MSL Vein+).

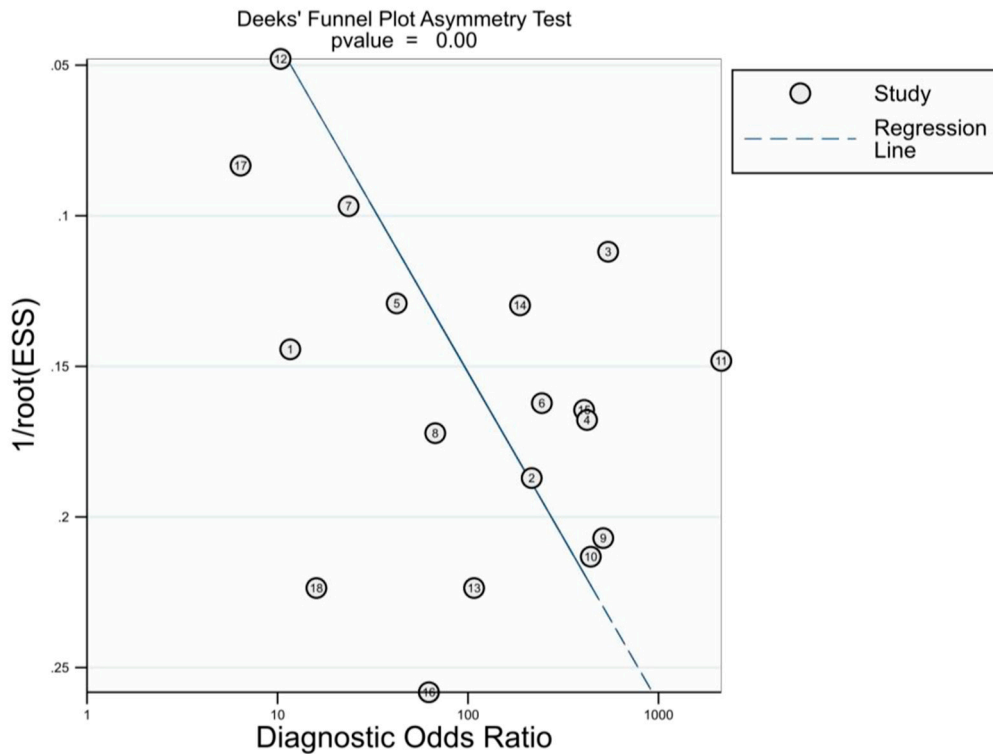


Figure 5. Deeks funnel plot asymmetry test for assessment of publication bias. p -values < 0.05 were considered as significant. ESS: Effective sample size.