

*Supplementary Materials*

# **Impact of Total Neoadjuvant Therapy vs Standard Chemoradiotherapy in Locally Advanced Rectal Cancer: A Systematic Review and Meta-Analysis of Randomized Trials**

**Maria C. Riesco-Martinez, Carlos Fernandez-Martos, Cristina Gravalos-Castro, Paula Espinosa-Olarte Paula, Anna La Salvia, Luis Robles-Diaz, Andrea Modrego-Sanchez, Rocio Garcia-Carbonero**

**Text S1. Search Strategy.**

#1 rectal cancer [Mesh]  
#2 rectal cancer [All fields]  
#3 rectal neoplasm [All fields]  
#4 #1OR #2 OR #3  
#5 chemoradiotherapy [Mesh]  
#6 chemoradiotherapy [All fields]  
#7 chemoradiation [All fields]  
#8 radiotherapy [Mesh]  
#9 radiotherapy [All fields]  
#10 neoadjuvant therapy [Mesh]  
#11 neoadjuvant treatment [All fields]  
#12 induction therapy [All fields]  
#13 total neoadjuvant [All fields]  
#14 chemotherapy [Mesh]  
#15 chemotherapy [All fields]  
#16 neoadjuvant chemotherapy [All fields]  
#17 #5 OR #6 OR #7 OR #8 OR #9 OR #10 OR #11 OR #12 OR #13 OR #14 OR #15 OR #16  
#18 randomized controlled trial [Mesh]  
#19 randomized [All fields]  
#20 controlled [All fields]  
#21 #18 OR #19 OR #20  
#22 #4 AND #17  
#23 #22 AND #21

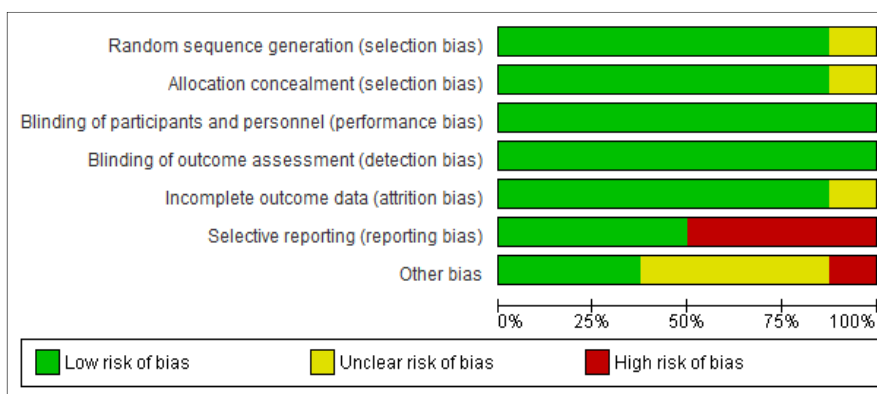


Figure S1. Risk of bias summary of included trials organized by domain.

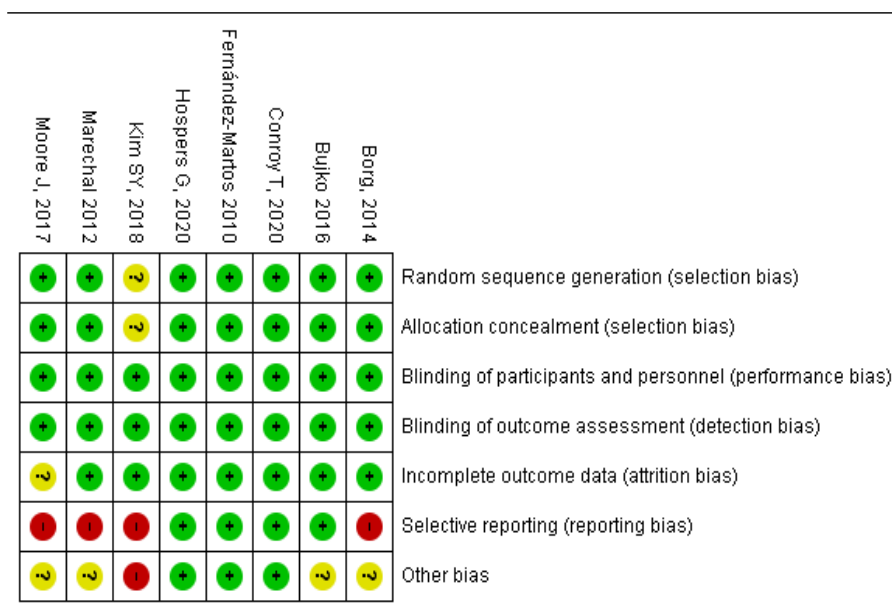
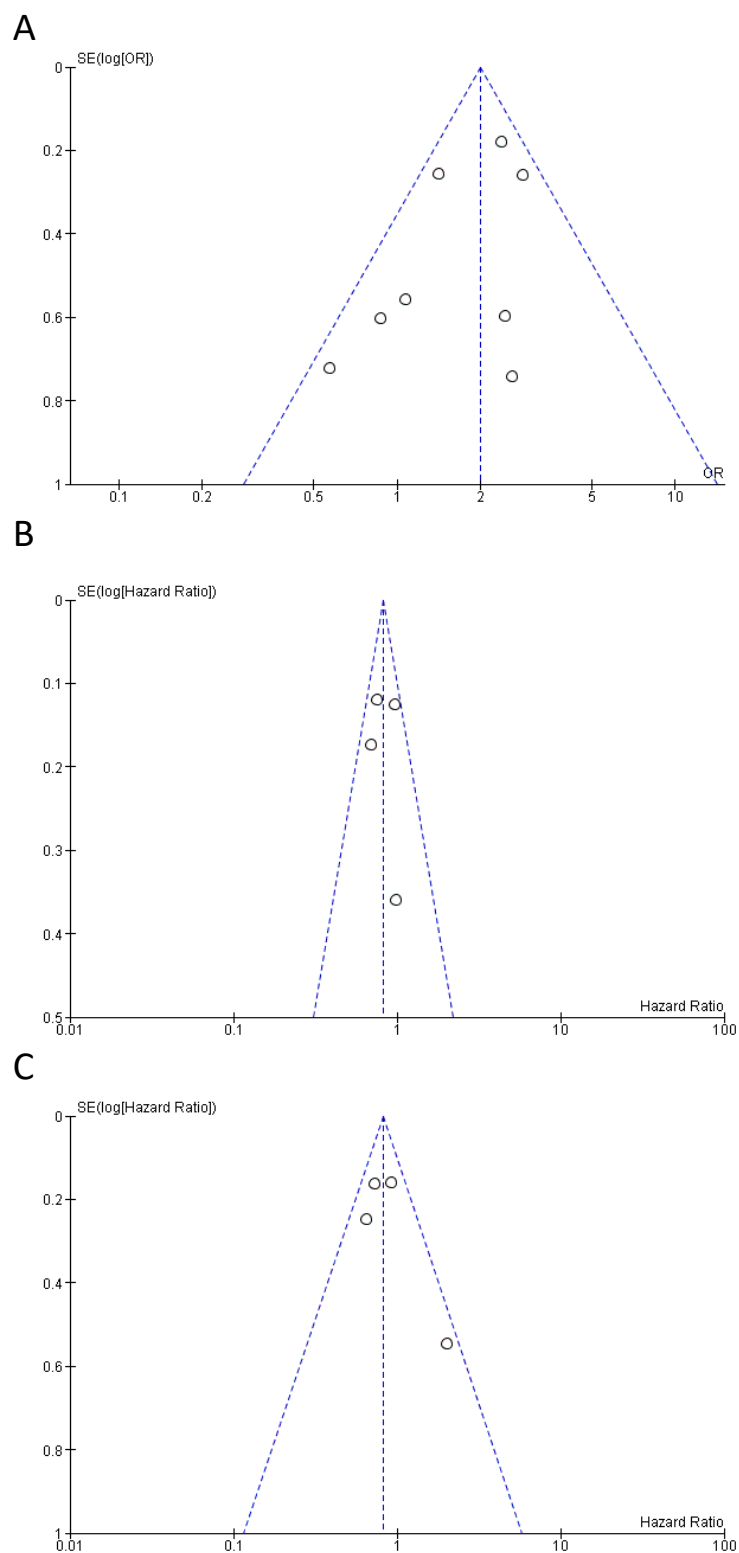
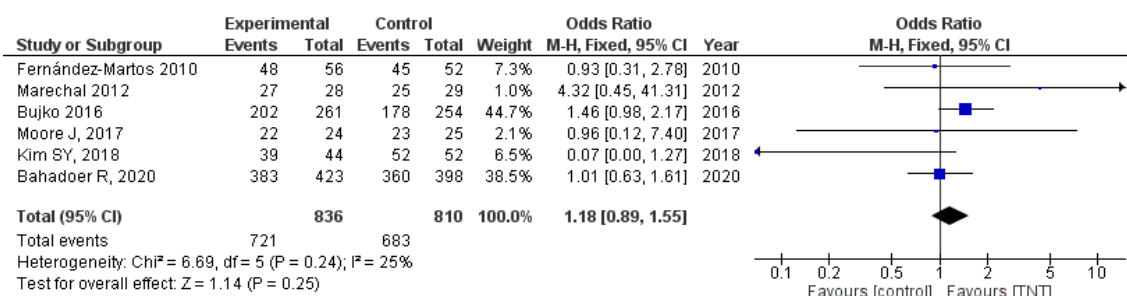


Figure S2. Risk of bias summary of included trials organized by study.

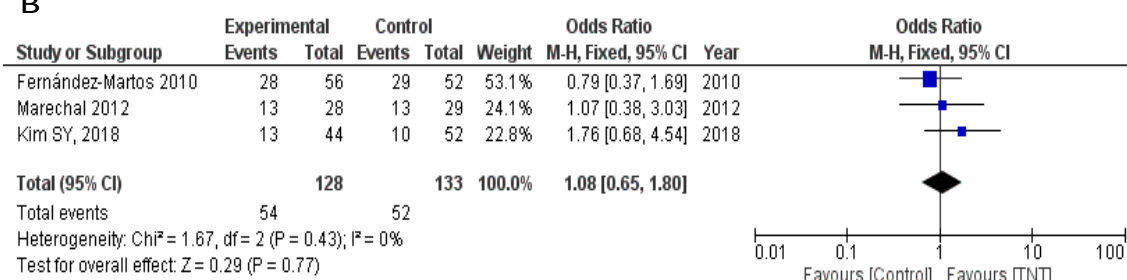


**Figure S3.** Funnel plots analysis of publication bias for (A) pathological complete response; (B) 3-year disease free survival; (C) 3-year overall survival.

A



B



**Figure S4.** (A) Forest plot for R0 resection rate of TNT vs. standard neoadjuvant CRT. (B) Forest plot for tumor regression grade 3-4 rate of TNT vs. standard neoadjuvant CRT.

**Table S1.** Surgical Outcomes.

Study	n	Arm	Type of Surgery				Post-Operative Mortality n (%)	p
			None n (%)	Anterior Resection n (%)	APR n (%)	Missing		
<i>Fernandez-Martos C</i> (GCR-3)	108	Std: 52	6 (11)	29 (56)	17 (33)	0 (0)	3 (7)	ns
		Exp:56	2 (4)	27 (48)	23 (40)	2 (4)	0 (0)	
<i>Marechal R</i>	57	Std: 29	1 (3)	23 (79)	24 (86)	-	NR	
		Exp:28	1 (4)	5 (17)	3 (11)			
<i>Borg C</i> (INOVA)	91	Std: 45		NR			0(0)	ns
		Exp:46					0(0)	
<i>Bujko K</i>	515	Std: 254	49	100 (49)	83	-	4 (2)	ns
		Exp:261	41	110 (50)	82		0(0)	
<i>Moore J</i> (WAIT)	49	Std: 24	0 (0)	12(50)	12 (50)	-	0(0)	ns
		Exp: 25	0 (0)	18 (72)	7 (28)		0(0)	
<i>Kim SY</i>	108	Std:55	-	46 (88.5)	0 (0.0)	-	0(0)	ns
		Exp:53		34 (77.3)	3 (6.8)		0(0)	
<i>Conroy T</i> (PRODIGE23)	461	Std:230		NR		-	6(2.8)	0.03
		Exp:231					0(0)	
<i>Badahoer R</i> (RAPIDO)	912	Std:450	2 (0.5)	33 (8.3)	157 (39.3)	-	NR	
		Exp:462	3 (0.7)	40 (9.4)	147 (34.5)			

APR: abdominoperineal resection; Exp: experimental arm; n: number of patients; NR: not reported; ns: not significant; std: standard arm.

**Table S2.** Sensitivity analysis for pathological complete response.

Study Excluded	Fixed Effect		I <sup>2</sup> (%)	I <sup>2</sup> - p Value
	OR	95% CI		
Fernandez-Martos C	2.04	1.62–2.57	38	0.14
Marechal	2.05	1.63–2.58	34	0.17
Borg	1.97	1.57–2.48	45	0.09
Bujko	2.17	1.68–2.79	31	0.19
Moore	2.06	1.64–2.59	24	0.24
Kim SY	1.98	1.57–2.48	45	0.09
Conroy T	1.82	1.41–2.34	30	0.20
Bahadoer R	1.75	1.30–2.35	35	0.16

CI: confidence interval; I<sup>2</sup>: ; OR: Odds Ratio.

**Table S3.** Sensitivity analysis for pathological complete response in trials using induction chemotherapy.

Study Excluded	Fixed Effect		I <sup>2</sup> (%)	I <sup>2</sup> - p Value
	OR	95% CI		
Fernández-Martos C	2.37	1.54–3.63	38	0.20
Marechal M	2.39	1.57–3.66	20	0.29
Borg C	2.10	1.38–3.20	59	0.09
Conroy T	1.32	0.69–2.53	0	0.44

CI: confidence interval; I<sup>2</sup>: ; OR: Odds Ratio.

**Table S4.** Sensitivity analysis for pathological complete response in trials using consolidation chemotherapy.

Study Excluded	Fixed Effect		I <sup>2</sup> (%)	I <sup>2</sup> - p Value
	OR	95% CI		
Bujko K	2.19	1.58–3.05	46	0.16
Moore J	2.02	1.53–2.68	32	0.23
Kim SY	1.90	1.44–2.51	65	0.06
Bahadoer R	1.36	0.87–2.12	9	0.33

CI: confidence interval; I<sup>2</sup>; OR: Odds Ratio.

**Table S5.** Sensitivity analysis for pathological complete response in trials using long-course chemoradiotherapy.

Study Excluded	Fixed Effect		I <sup>2</sup> (%)	I <sup>2</sup> - p Value
	OR	95% CI		
Fernández-Martos C	2.12	1.44–3.14	41	0.15
Marechal R	2.15	1.46–3.16	35	0.19
Borg C	1.92	1.31–2.82	50	0.09
Moore J	2.16	1.48–3.17	20	0.29
Kim SY	1.93	1.32–2.82	50	0.09
Conroy T	1.28	0.75–2.20	0	0.43

CI: confidence interval; I<sup>2</sup>; OR: Odds Ratio.



© 2020 by the authors. Licensee MDPI, Basel, Switzerland. This article is an open access article distributed under the terms and conditions of the Creative Commons Attribution (CC BY) license (<http://creativecommons.org/licenses/by/4.0/>).