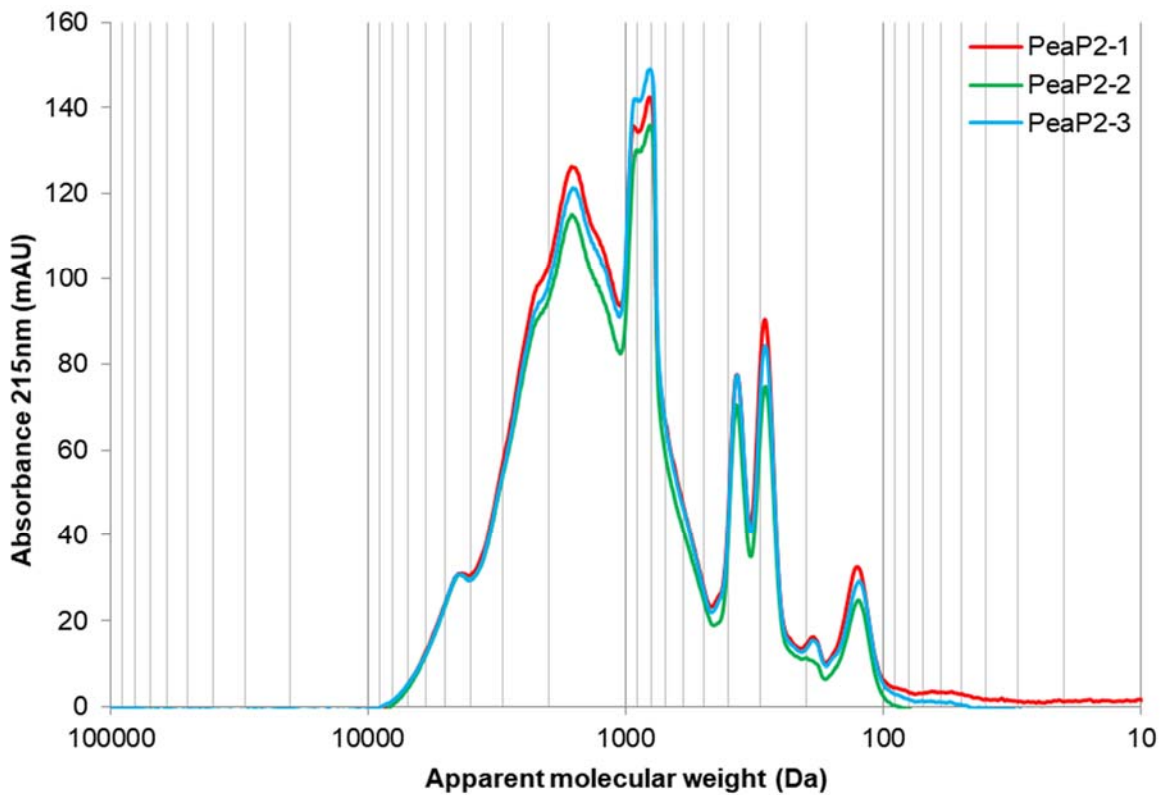
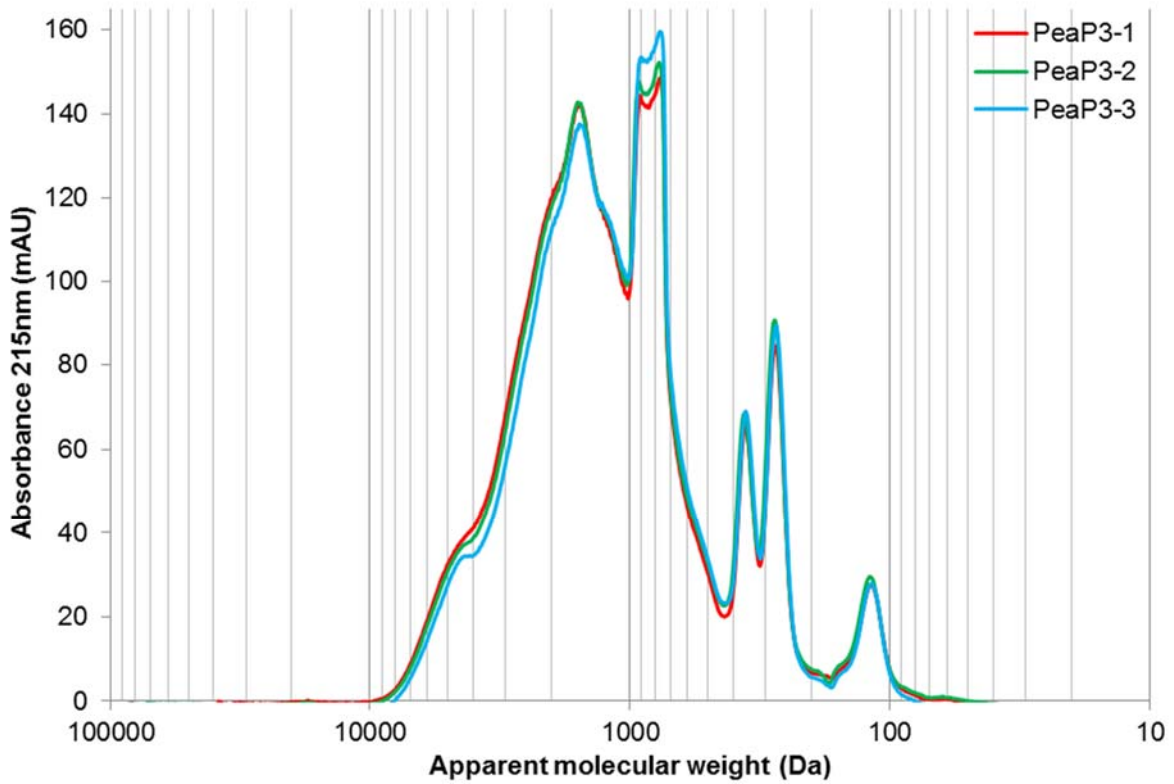


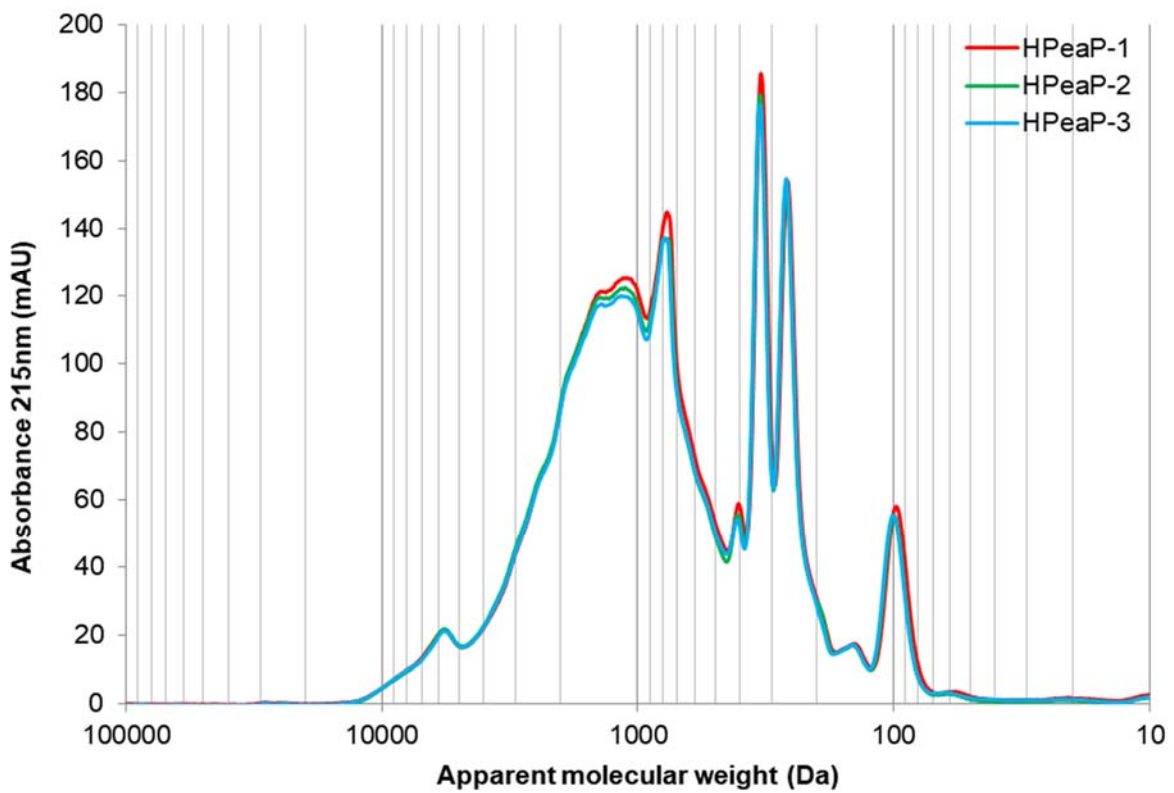
**Figure S1.** Apparent molecular weight peptide profiles of PeaP1 at the end of the SGID intestinal step, obtained after SEC-FPLC. Each curve represents the peptide profile of one replicate.



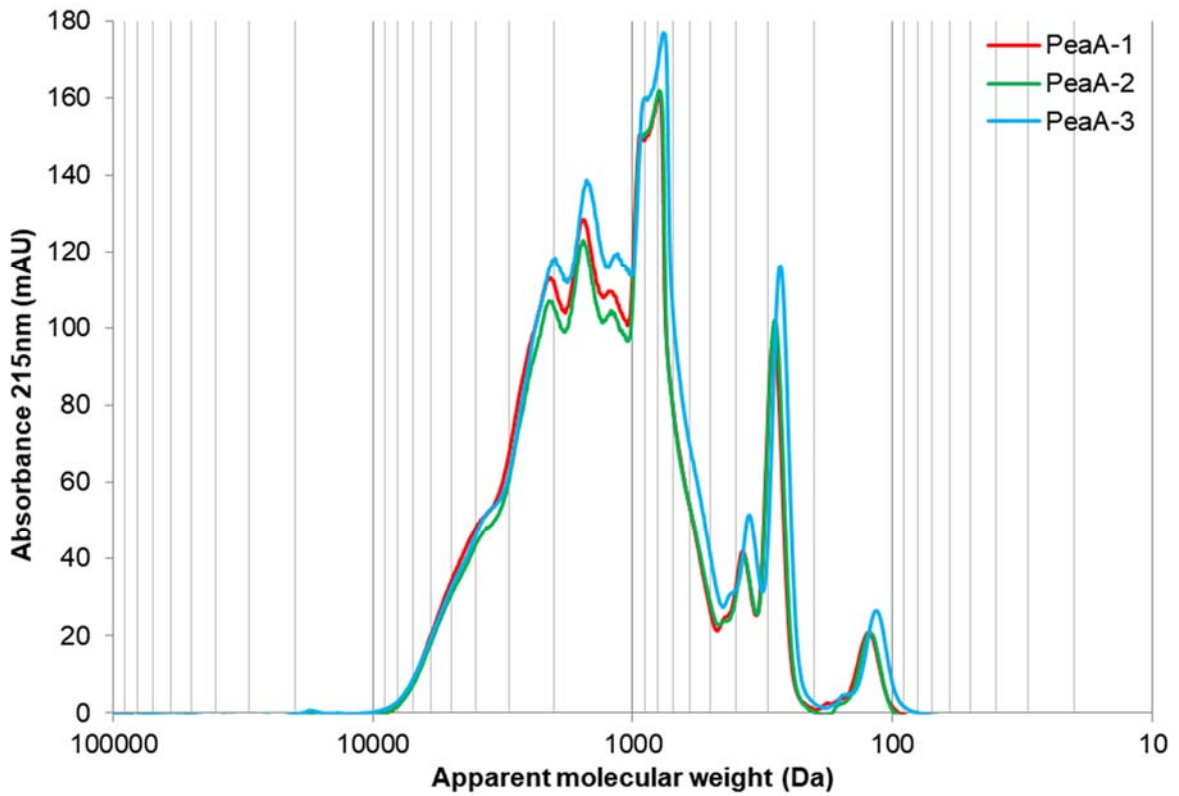
**Figure S2.** Apparent molecular weight peptide profiles of PeaP2 at the end of the SGID intestinal step, obtained after SEC-FPLC. Each curve represents the peptide profile of one replicate.



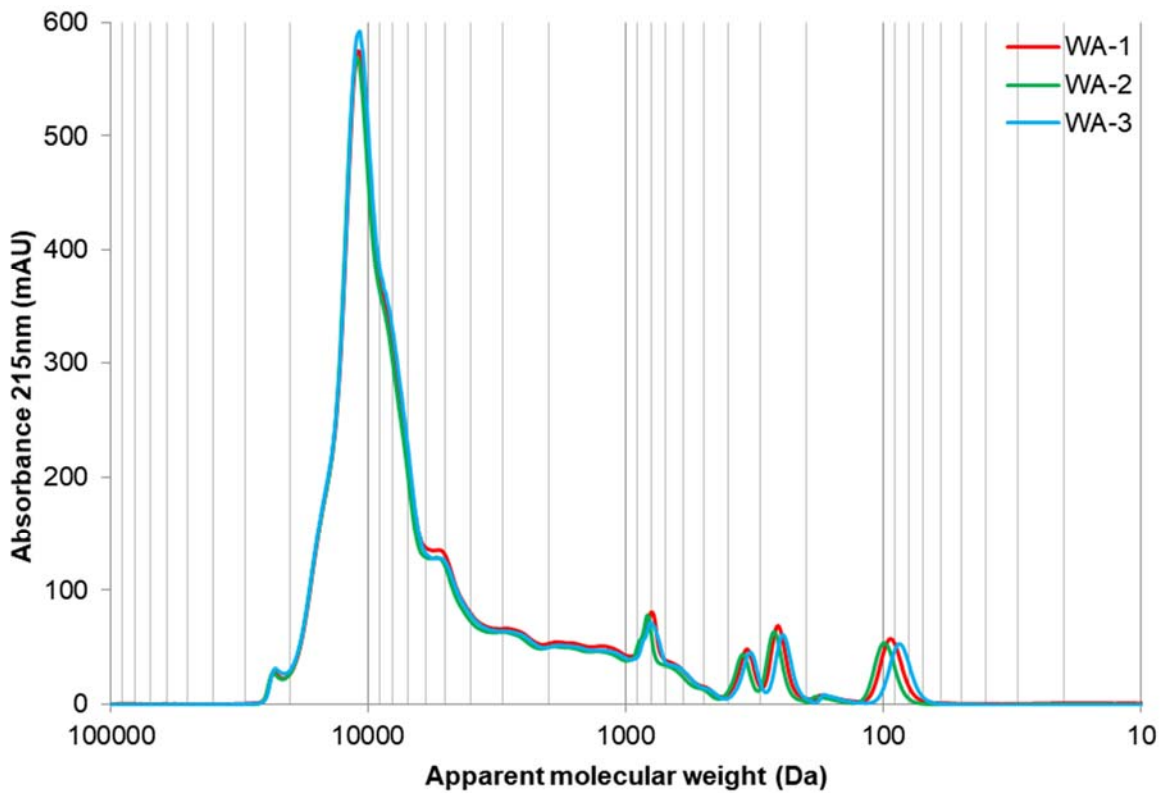
**Figure S3.** Apparent molecular weight peptide profiles of PeaP3 at the end of the SGID intestinal step, obtained after SEC-FPLC. Each curve represents the peptide profile of one replicate.



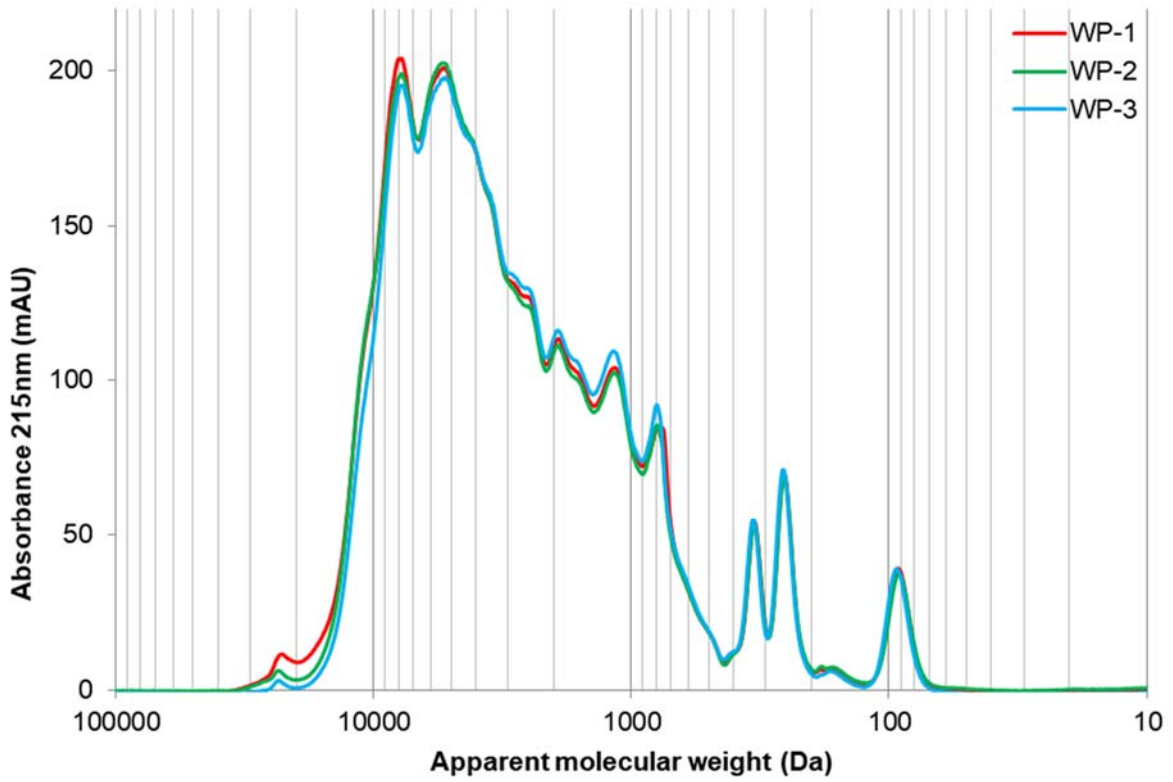
**Figure S4.** Apparent molecular weight peptide profiles of HPeaP at the end of the SGID intestinal step, obtained after SEC-FPLC. Each curve represents the peptide profile of one replicate.



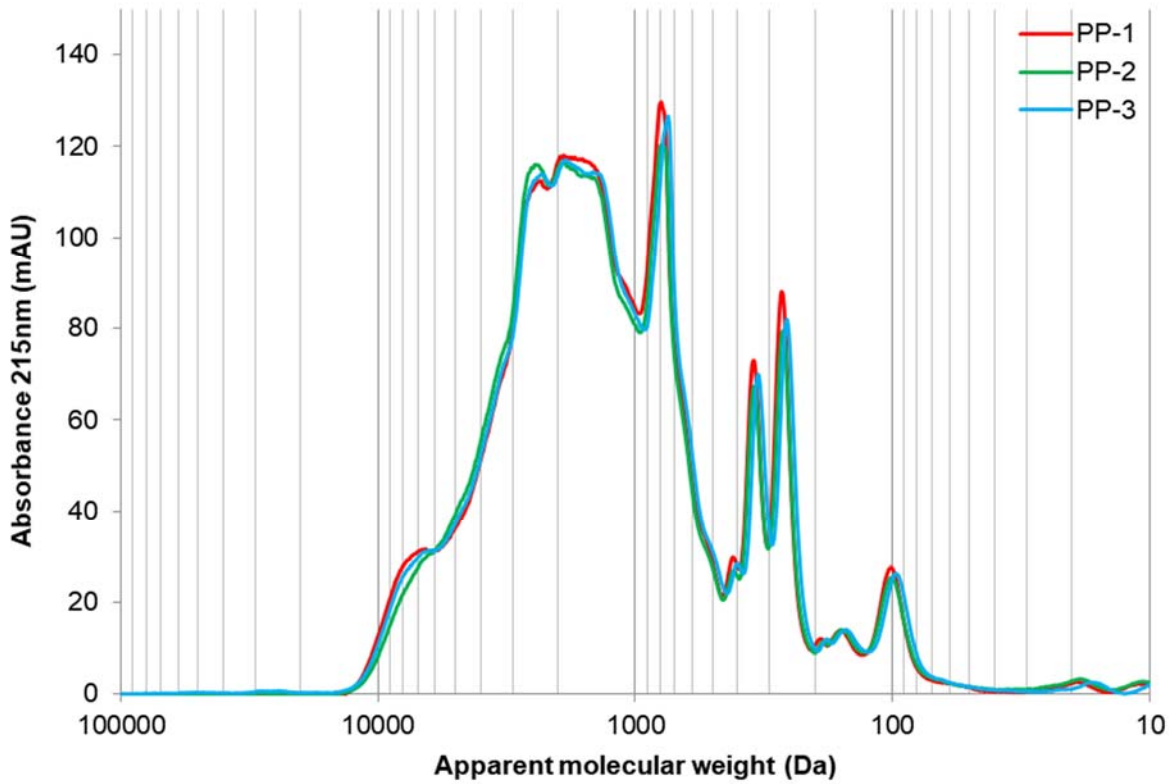
**Figure S5.** Apparent molecular weight peptide profiles of PeaA at the end of the SGID intestinal step, obtained after SEC-FPLC. Each curve represents the peptide profile of one replicate.



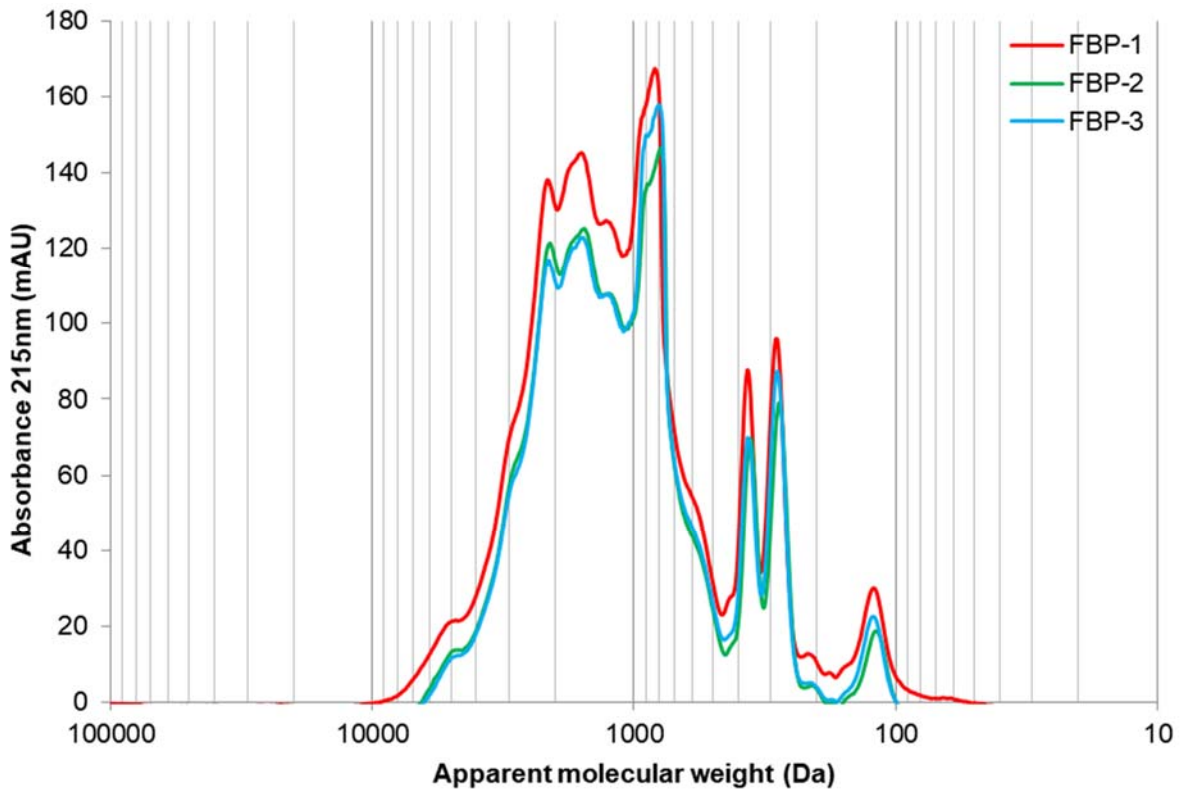
**Figure S6.** Apparent molecular weight peptide profiles of WA at the end of the SGID intestinal step, obtained after SEC-FPLC. Each curve represents the peptide profile of one replicate.



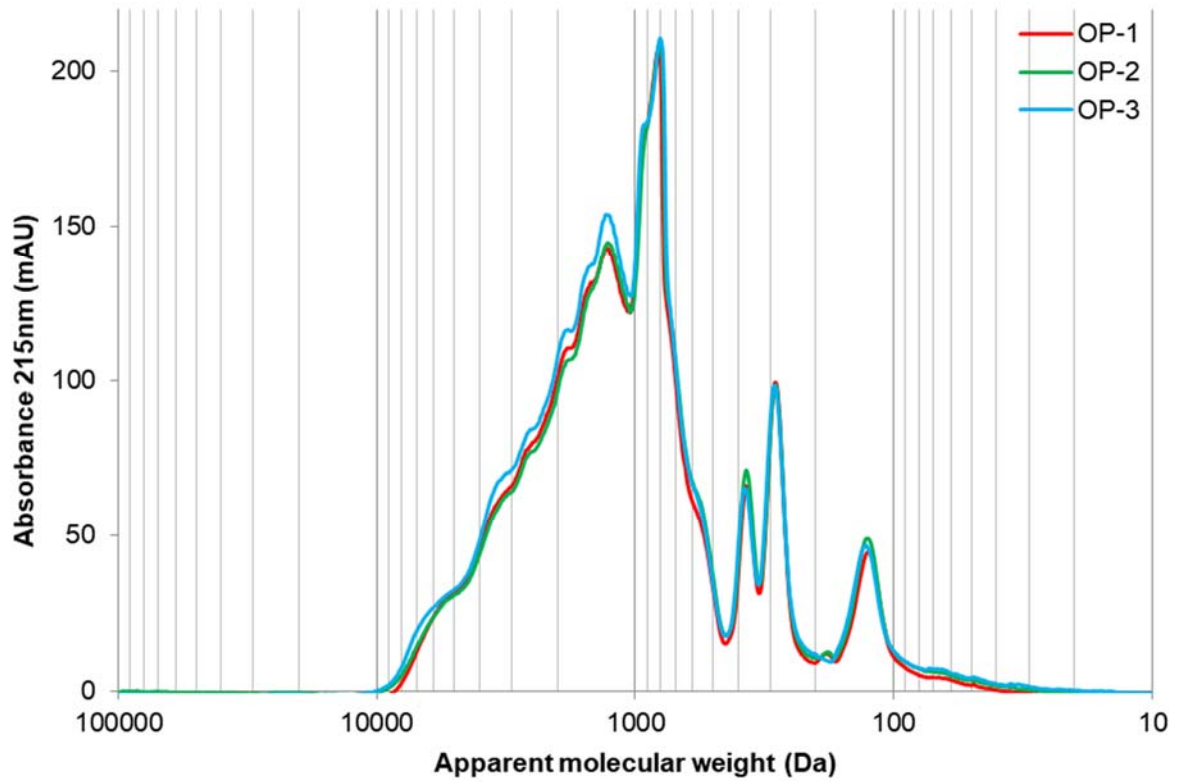
**Figure S7.** Apparent molecular weight peptide profiles of WP at the end of the SGID intestinal step, obtained after SEC-FPLC. Each curve represents the peptide profile of one replicate.



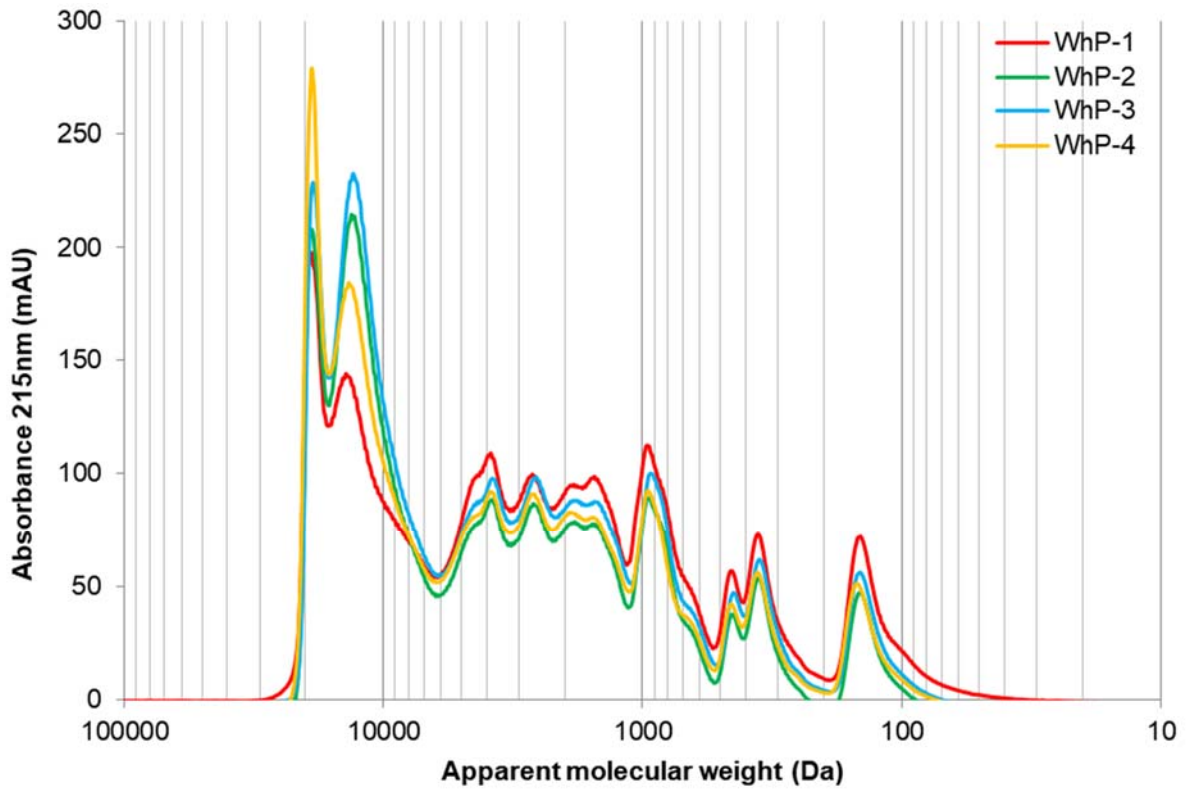
**Figure S8.** Apparent molecular weight peptide profiles of PP at the end of the SGID intestinal step, obtained after SEC-FPLC. Each curve represents the peptide profile of one replicate.



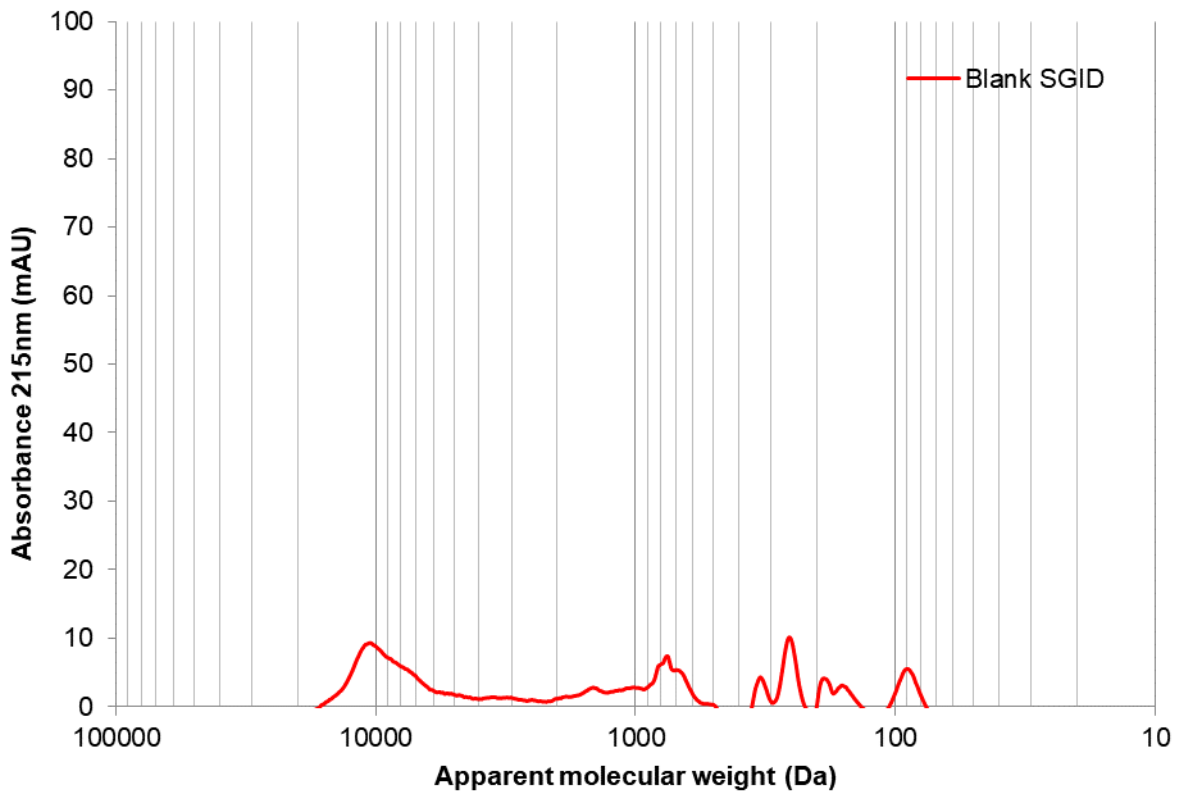
**Figure S9.** Apparent molecular weight peptide profiles of FBP at the end of the SGID intestinal step, obtained after SEC-FPLC. Each curve represents the peptide profile of one replicate.



**Figure S10.** Apparent molecular weight peptide profiles of OP at the end of the SGID intestinal step, obtained after SEC-FPLC. Each curve represents the peptide profile of one replicate.



**Figure S11.** Apparent molecular weight peptide profiles of WhP at the end of the SGID intestinal step, obtained after SEC-FPLC. Each curve represents the peptide profile of one replicate.



**Figure S12.** Apparent molecular weight peptide profiles of Blank SGID at the end of the intestinal step, obtained after SEC-FPLC.