

Supplementary Materials: NEK1 Phosphorylation of YAP Promotes its Stabilization and Transcriptional Output

Md Imtiaz Khalil, Ishita Ghosh, Vibha Singh, Jing Chen, Haining Zhu and Arrigo De Benedetti

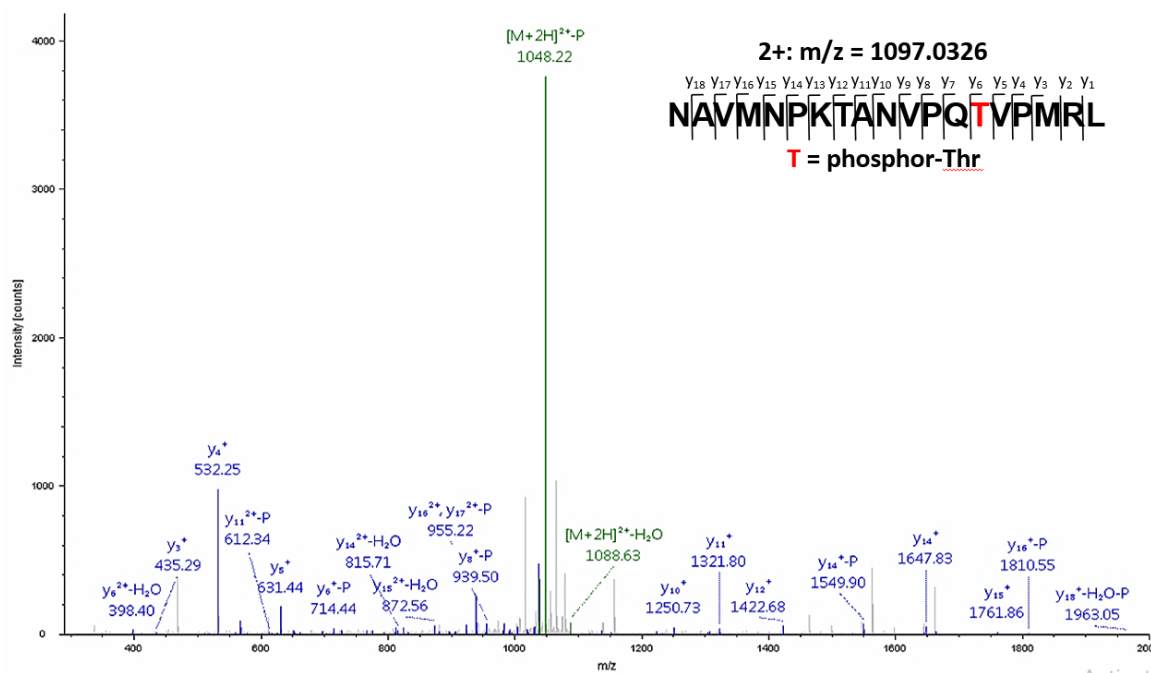


Figure S1. MS/MS spectrum of the phosphor-peptide N₇₀AVMNPKTANVPQTVPMRL₈₈ to determine pT83.

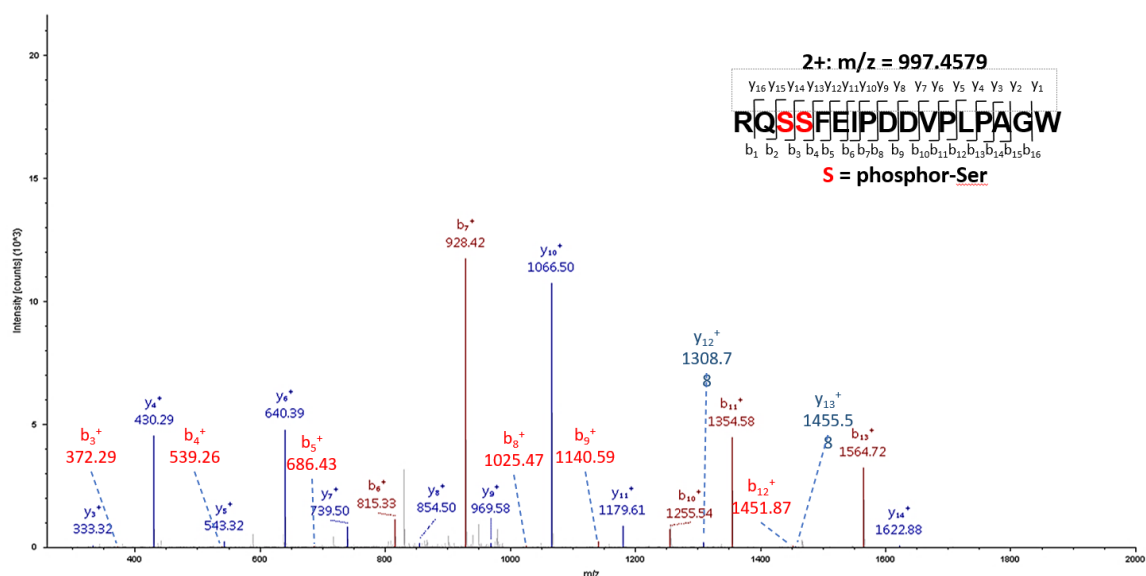


Figure S2. MS/MS spectrum of the phosphor-peptide R₁₆₁QSSF EIPDDVPLPAGW₁₇₇ to determine pS163/pS164. It is noted that this phosphor-peptide was detected in all 3 sample. It is noted that the MS/MS spectrum cannot distinguish pS163 or pS164.

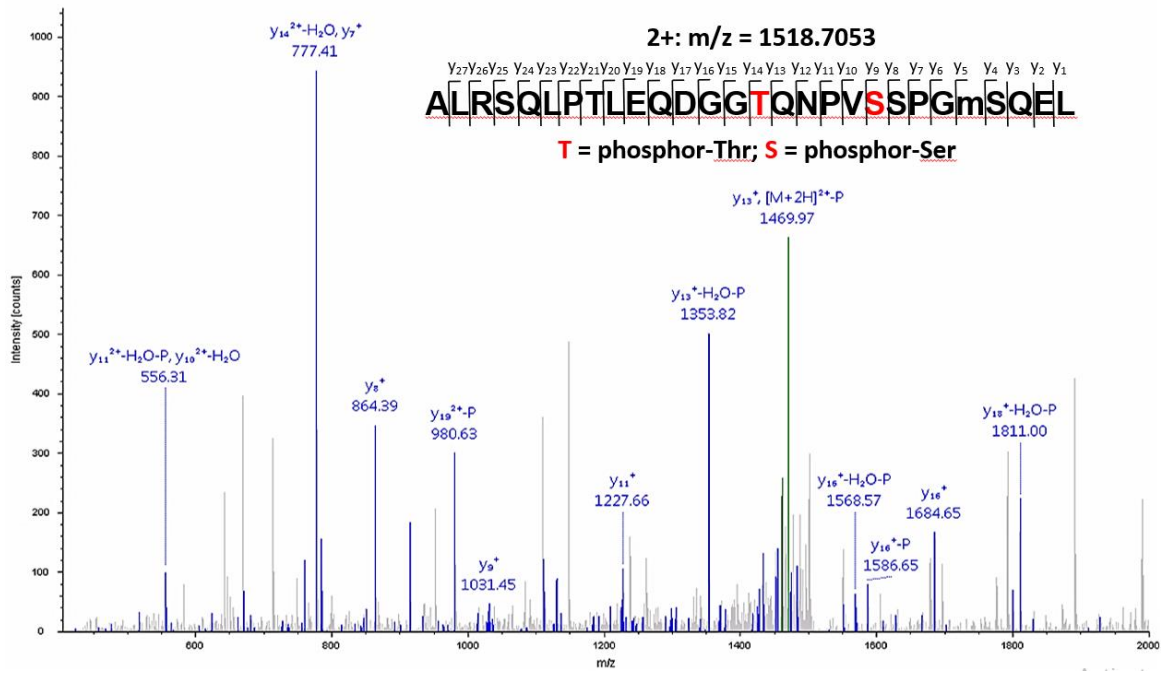


Figure S3. MS/MS spectrum of the phosphor-peptide A₃₄₇LRSQLPTLEQDGGTQNPVSSPGmSQEL₃₇₄ to determine pT361/pS366. It is noted that the MS/MS spectrum cannot distinguish pT361 or pS366.

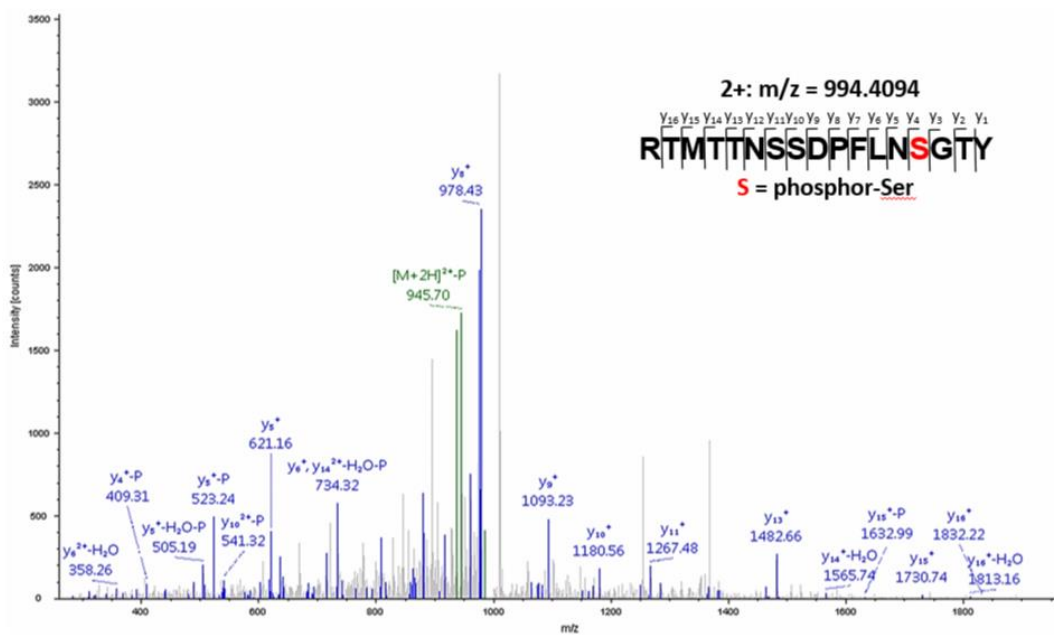


Figure S4. MS/MS spectrum of the phosphor-peptide R₃₇₅TMTTNSSDPFLNSGTY₃₉₁ to determine pS388.

Fig1A_LNCaP_YAP-orig-quantitated

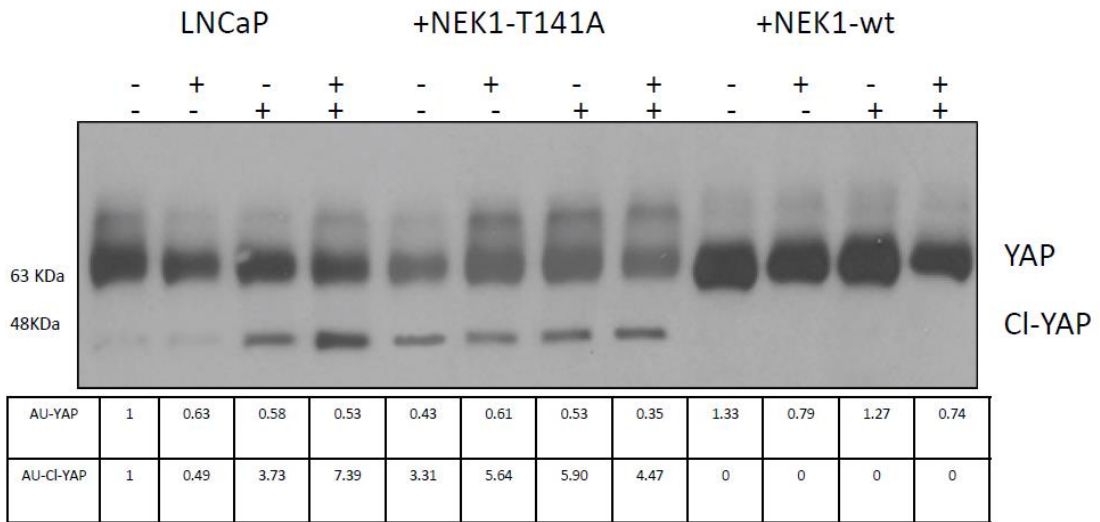


Fig1B_ NEK1/YAP co-IP

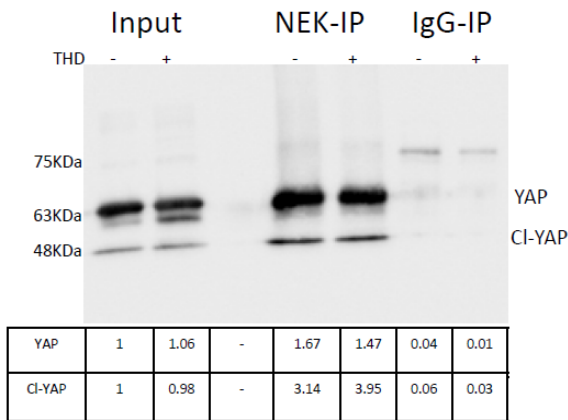


Fig1C_NT1_YAP

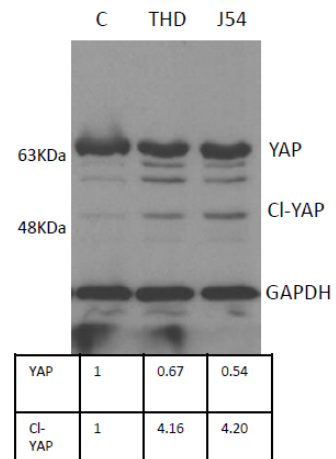


Fig1B_ NEK1/TLK1 co-IP

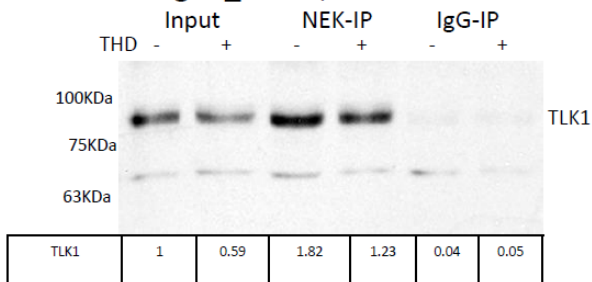
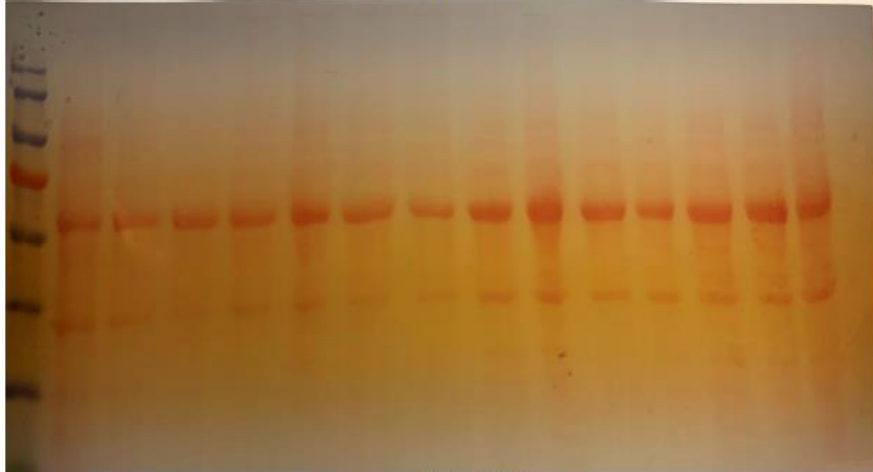
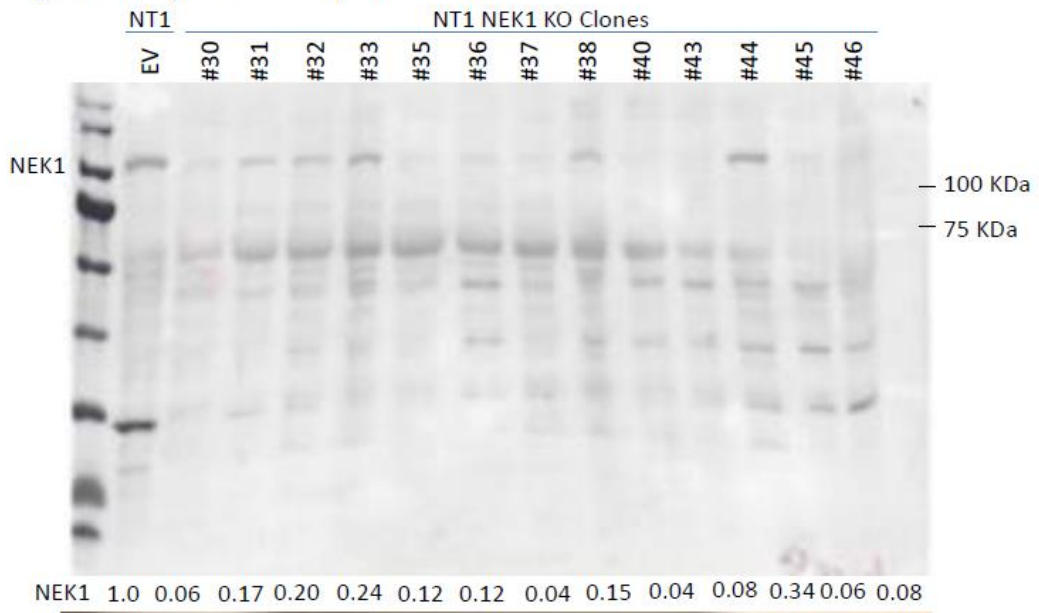


Figure 2A (Left Panel): NT1 NEK1 KO



Ponceau S.

Figure 2A (Right Panel): YAP1 level in NT1 NEK1 KO cells

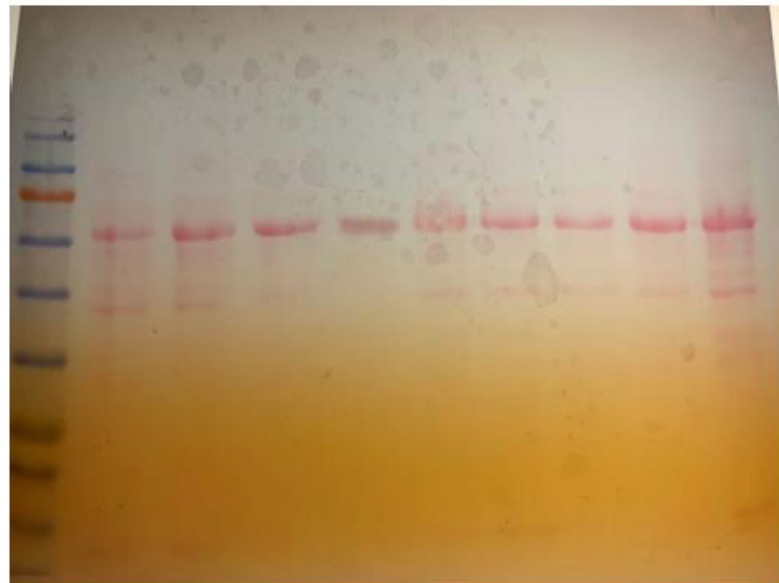
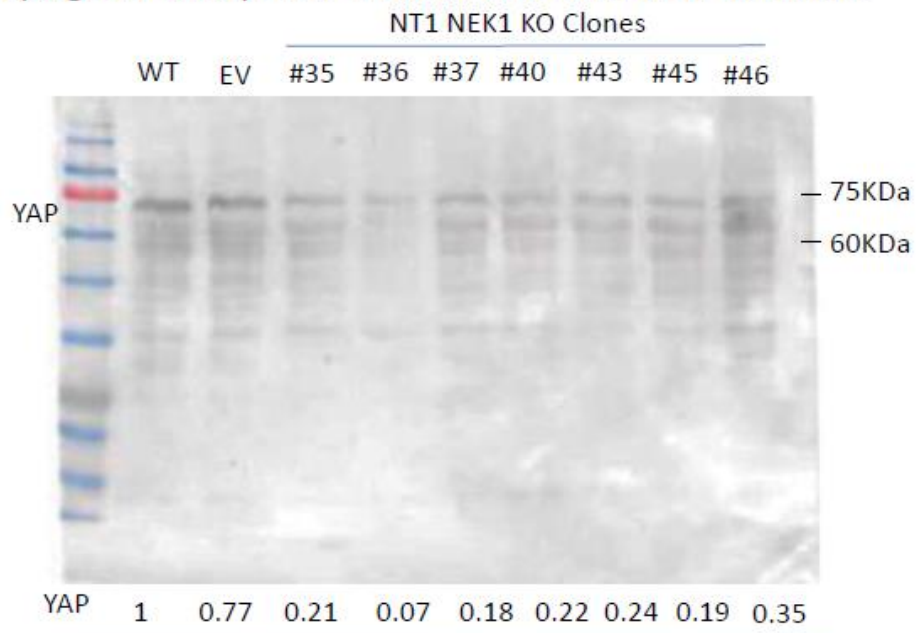


Figure 2C left panel:
YAP level upon THD treatment

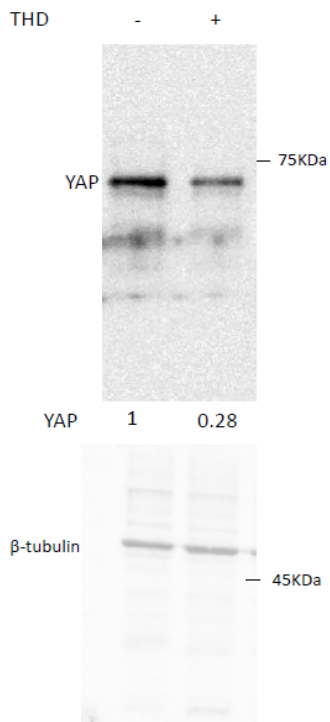


Figure 2C Right panel:
pYAP level upon THD treatment

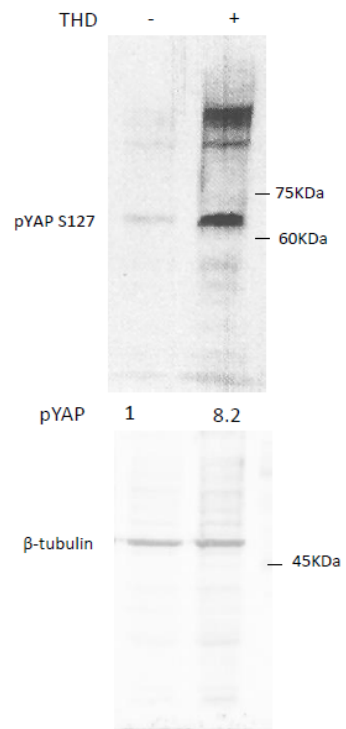


Figure 2D left panel:
TLK1 knockdown with shRNA

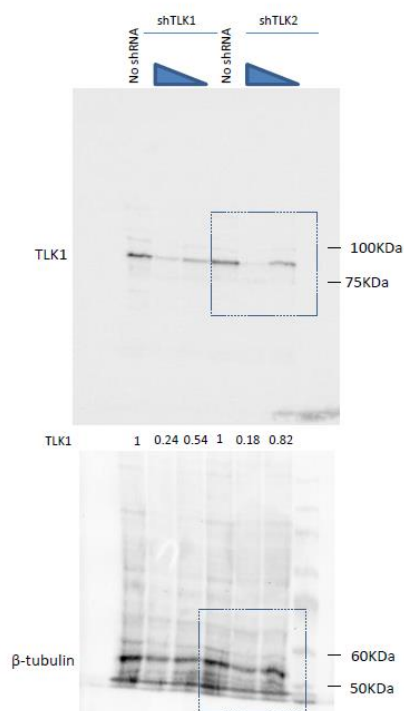


Figure 2D right panel: pNEK1 level in
TLK1 KD cells

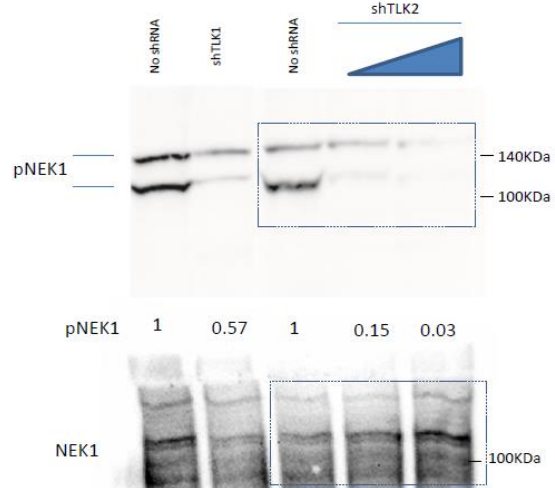


Figure 3C: Radioactive IVK of YAP1

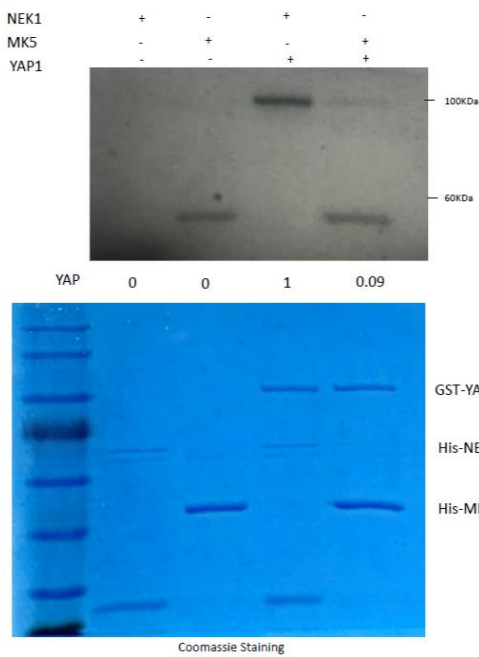


Figure 3D: IVK of YAP1 for MS determination

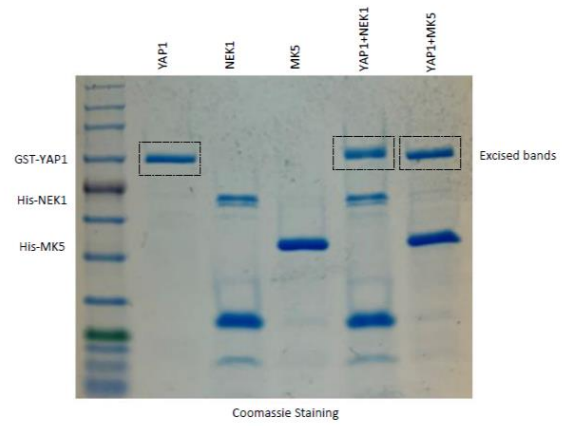


Figure 3E: YAP1 pTyr determination

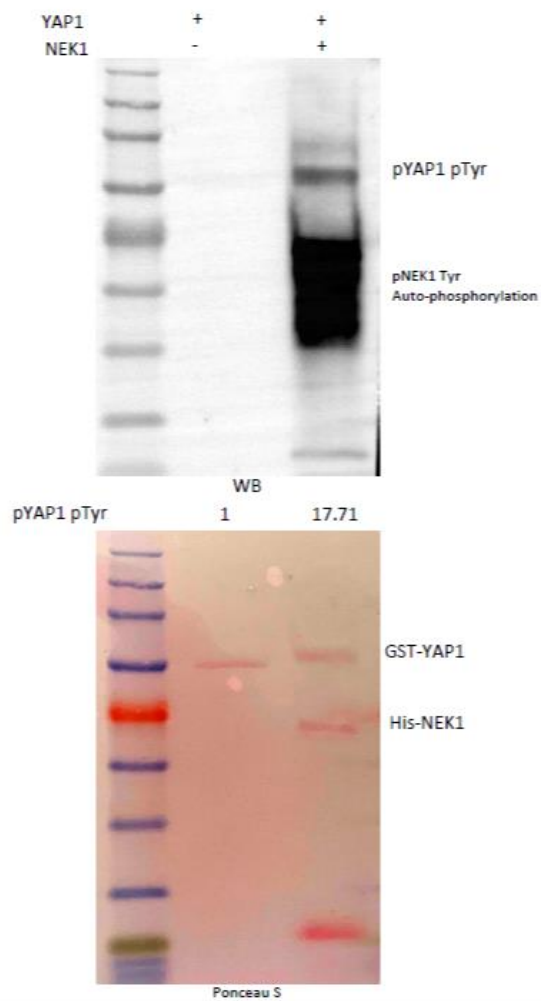


Figure S5. Densitometry of the original uncropped blots and gel images with their respective numbers from the main figures.

Table S1. Assigned phosphorylated sites.

Phosphorylated Sites	Peptides	YAP1	YAP1 + NEK1	YAP1 + MK5
T83	N ₇₀ AVMNPKTANVPQ T VPMRL ₈₈	N	Y	N
* S163/S164	R ₁₆₁ Q SS FEIPDDVPLPAGW ₁₇₇	Y	Y	Y
* T361/S366	A ₃₄₇ LRSQ L P T LEQDGG T QNPV SS PGmSQEL ₃₇₄	N	Y	N
S388	R ₃₇₅ TMTTNSDDPFLN S GTY ₃₉₁	N	Y	N
* S406/Y407	H ₃₉₂ SRDESTDSGLSM S Y ₄₀₇	N	Y	N
T493	A ₄₉₁ A T KLDKESFL ₅₀₁	N	Y	N

* Cannot tell which site is preferred based on the MS/MS spectrum.