

Supplementary Materials: Liposome-Encapsulated Bacillus Calmette–Guérin Cell Wall Skeleton Enhances Antitumor Efficiency for Bladder Cancer In Vitro and In Vivo via Induction of Amp-Activated Protein Kinase

Young Mi Whang, Da Hyeon Yoon, Gwang Yong Hwang, Hoyub Yoon, Serk In Park, Young Wook Choi, and In Ho Chang

Supplementary Fig. 1

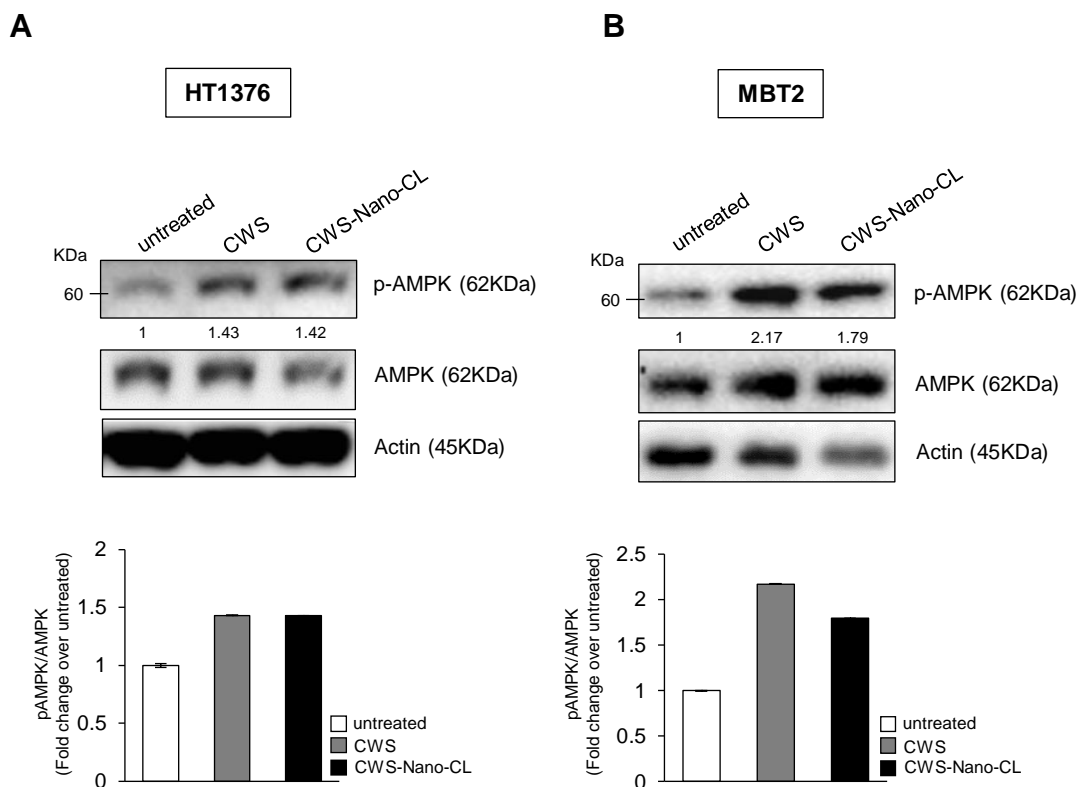


Figure S1. Effects of CWS-loaded formulations on AMPK phosphorylation in HT1376 (A) and MBT2 (B) cells. Cells were treated with 1 μ g/ml of CWS-loaded formulations for 24 hours, and phosphorylated AMPK α to total AMPK α protein expression was assessed by western blotting. Actin was used the loading control. The blots are representative of three independent experiments. The quantification graphs are represented, p-AMPK/AMPK ratios determined by densitometric analyses. All expression ratios were normalized to the untreated group.

Supplementary Fig. 2

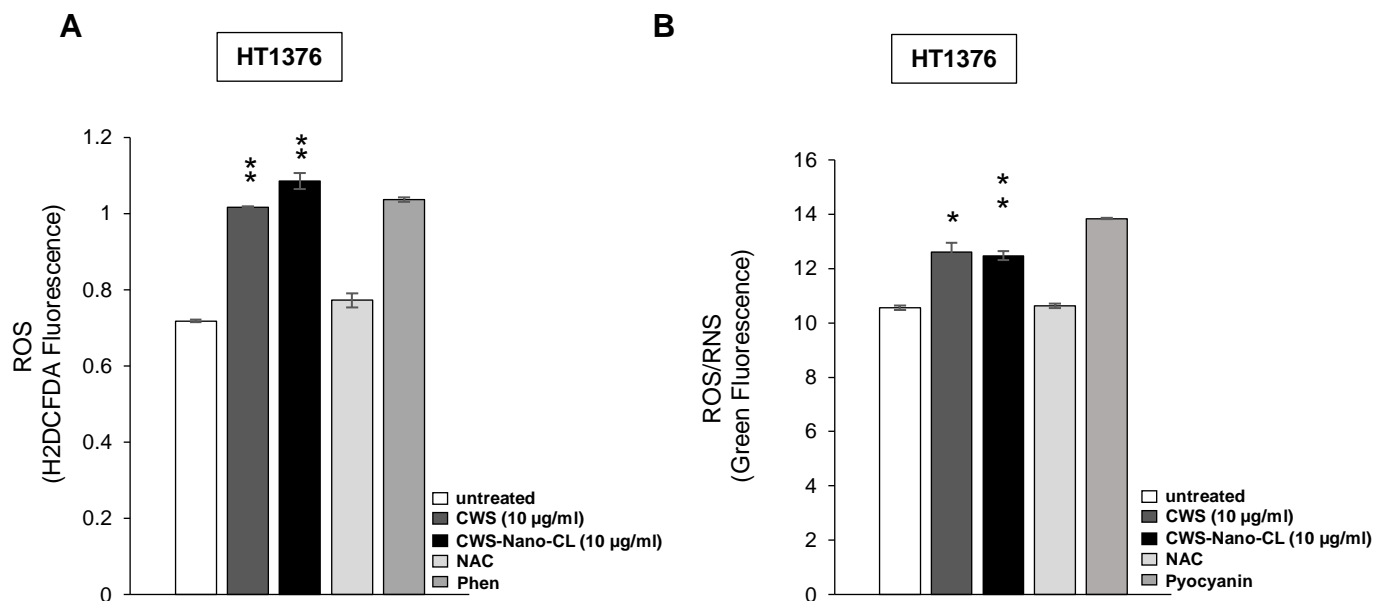


Figure S2. Effects of CWS-loaded formulations on ROS production in HT1376 cells. Cells were treated with 10 µg/ml of CWS or CWS-Nano-CL for 24 hours, then treated with NAC (2 mM, positive control) for 30 minutes. After washing, cells were treated with H2DCFDA (10 µM) for 1 hour prior to measurement. ROS/RNS production was measured using ROS-ID® ROS/RNS detection kit. Pyocyanin (500 µM) and NAC (5 mM) were added as a positive and a negative control for 30 min. *, $p < 0.005$, **, $p < 0.0005$, untreated/CWS, or untreated/CWS-Nano-CL. Data are mean \pm SEM (n=6).

Supplementary Fig. 3

D

5637

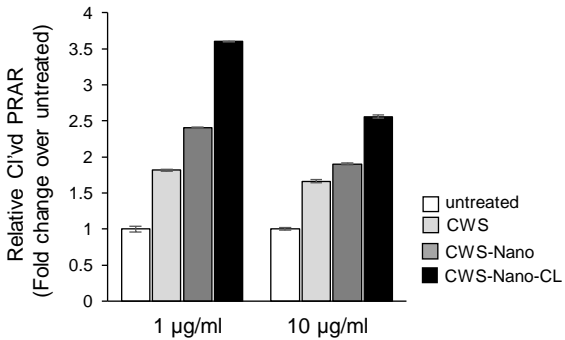
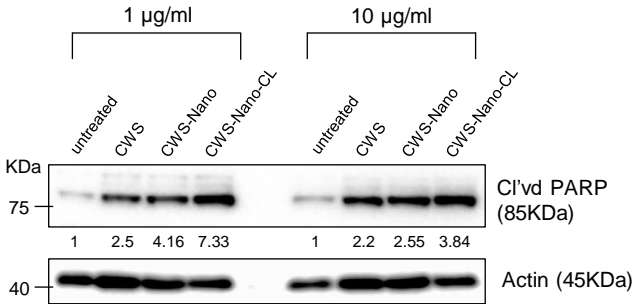


Figure S3. The quantitation results of Figure 2D.

Supplementary Fig. 4

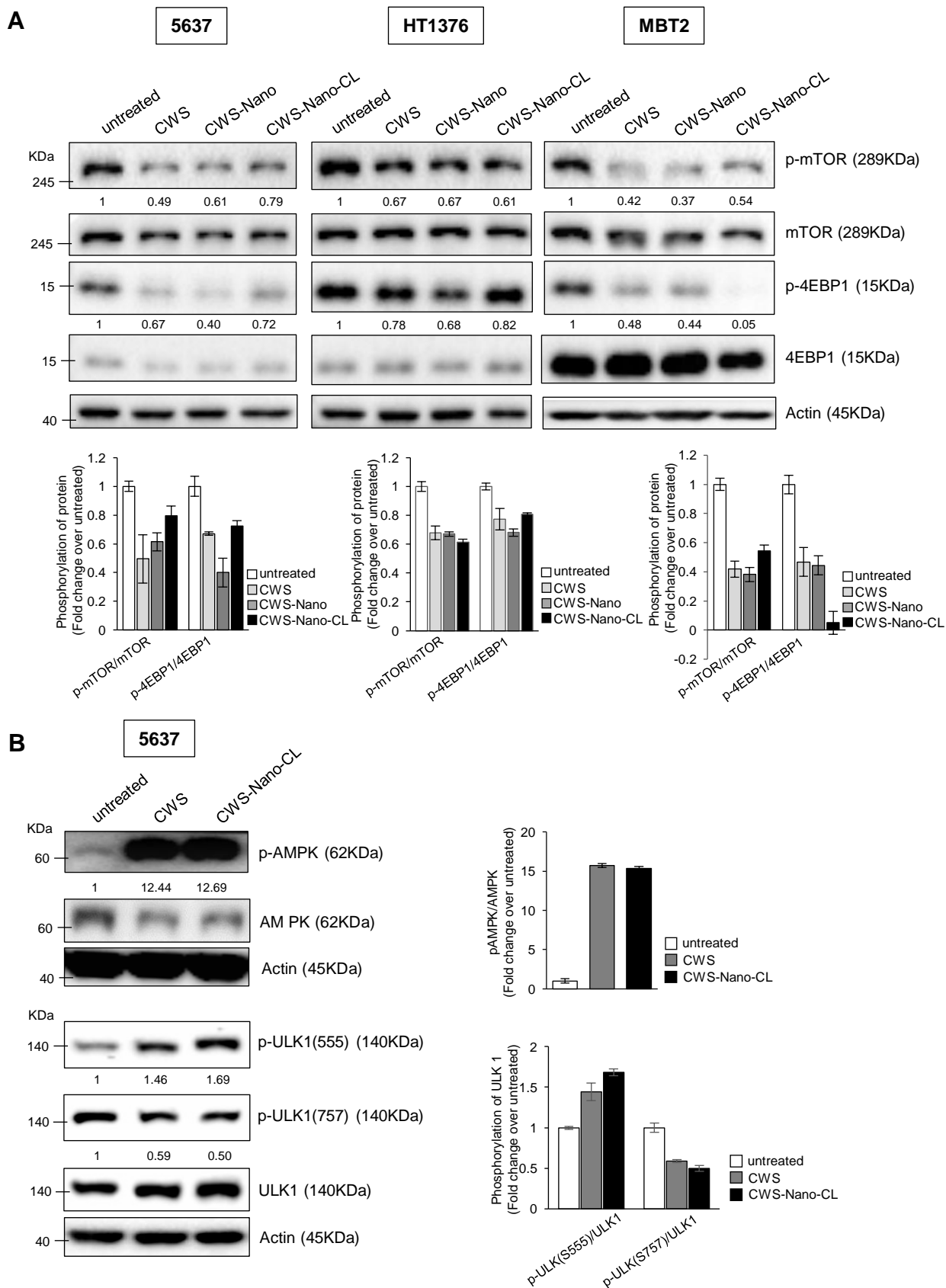
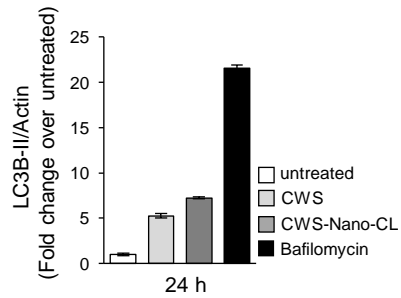
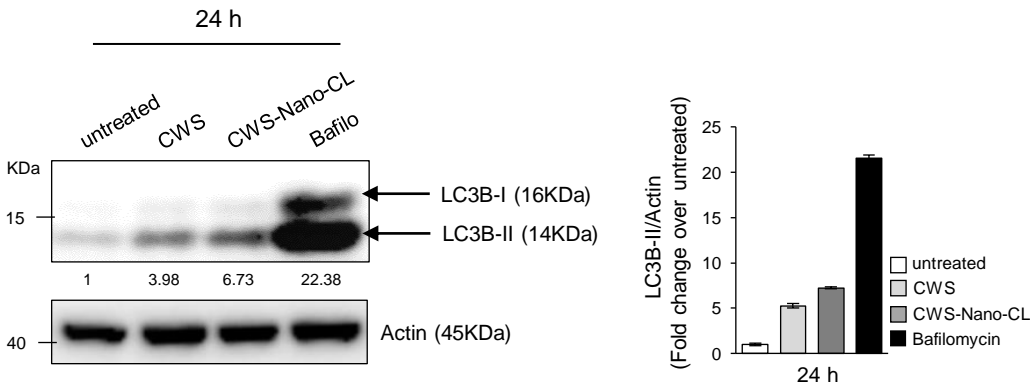
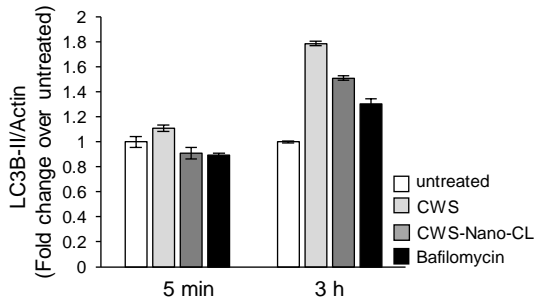
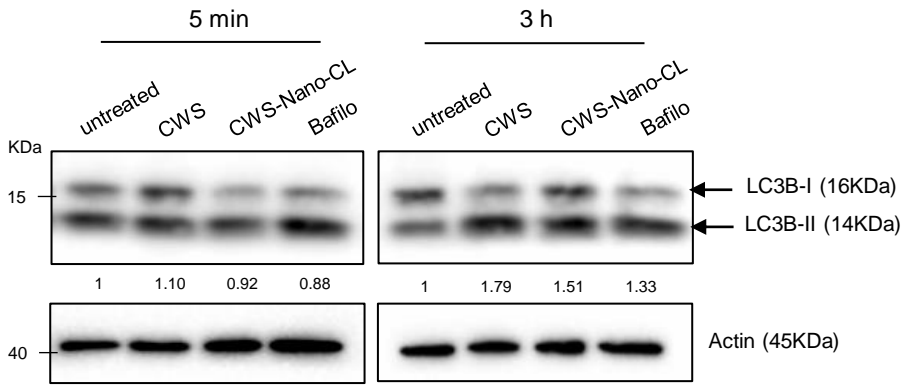


Figure S4. The quantitation results of Figure 3A and 3B.

C**Figure S4.** The quantitation results of Figure 3C

Supplementary Fig. 5

A

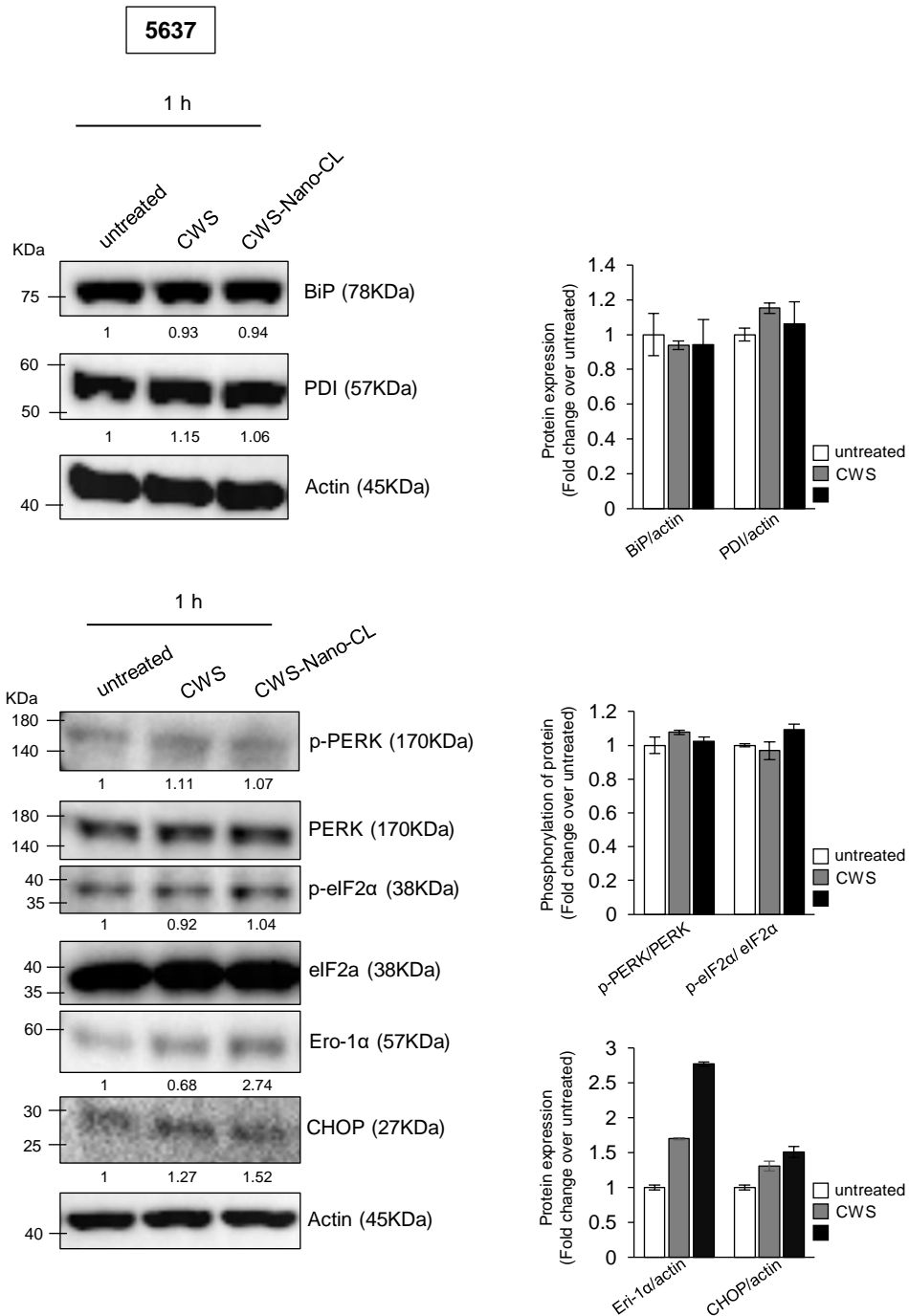
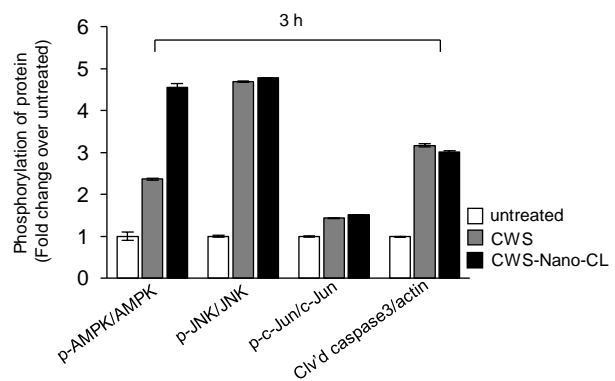
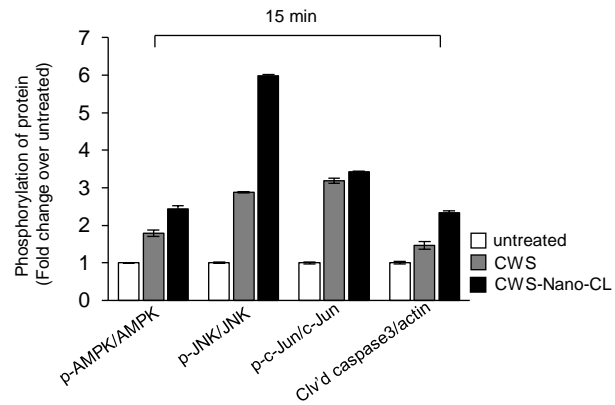
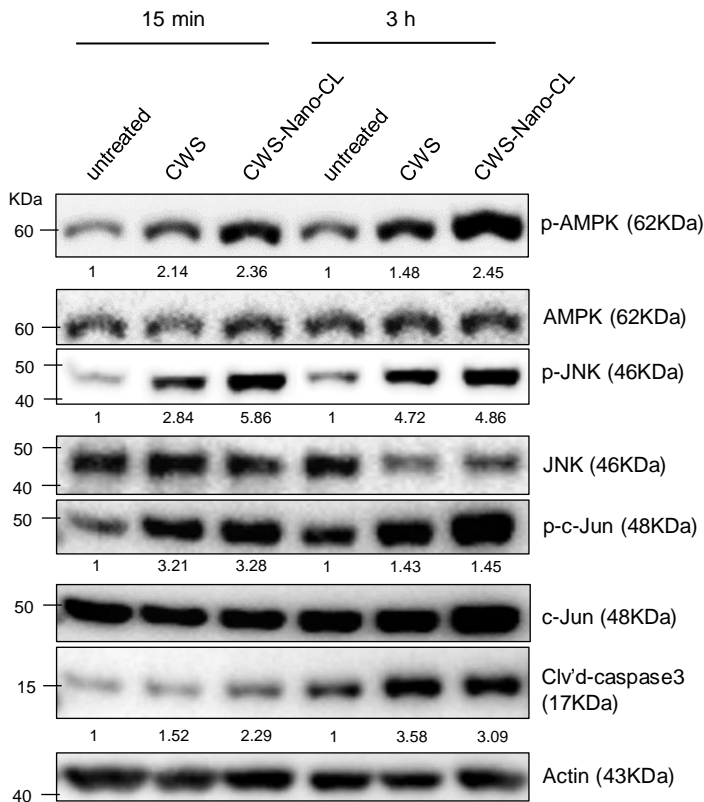
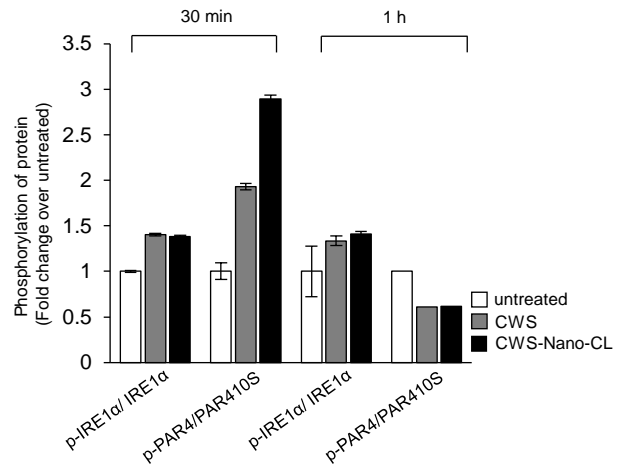
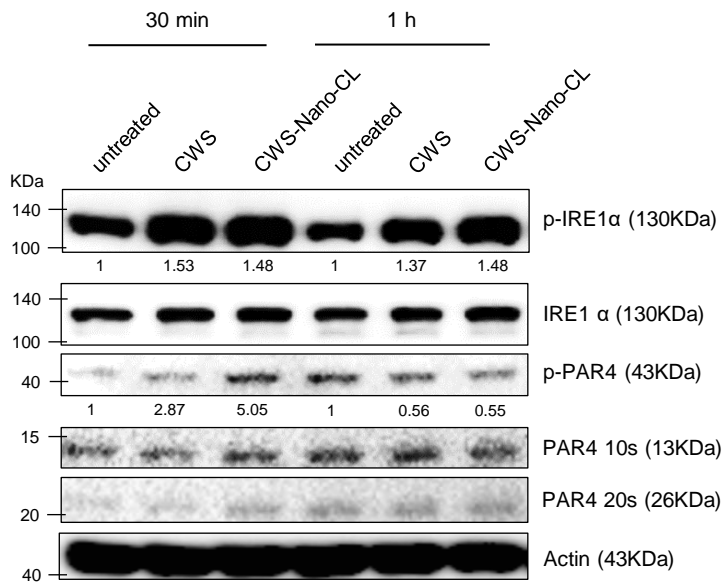


Figure S5. The quantitation results of Figure 5A

B

5637

**Figure S5.** The quantitation results of Figure 5B

Supplementary Fig. 6

C

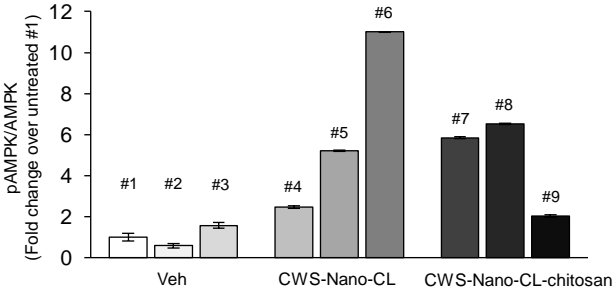
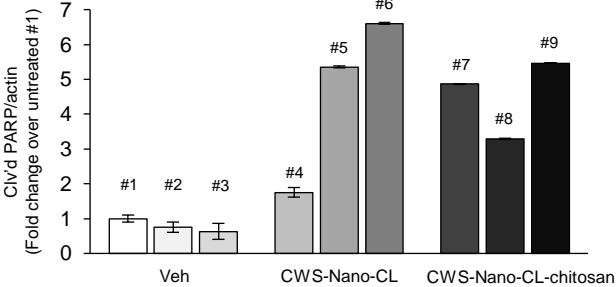
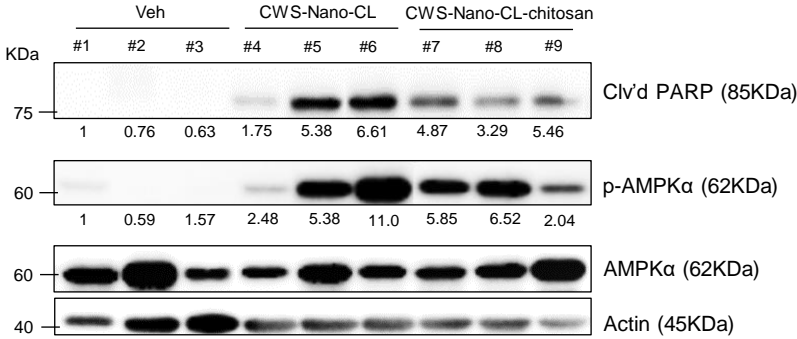


Figure S6. The quantitation results of Figure 6C

Figure S7: Whole blot showing all the bands with molecular weight markers on the Western blotting.

Figure 2D

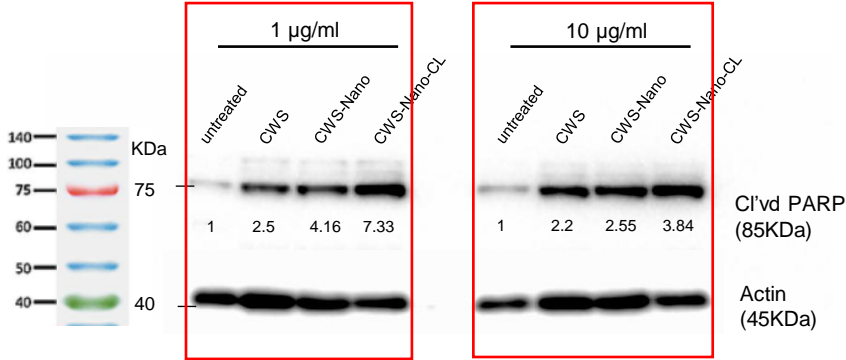


Figure 3A

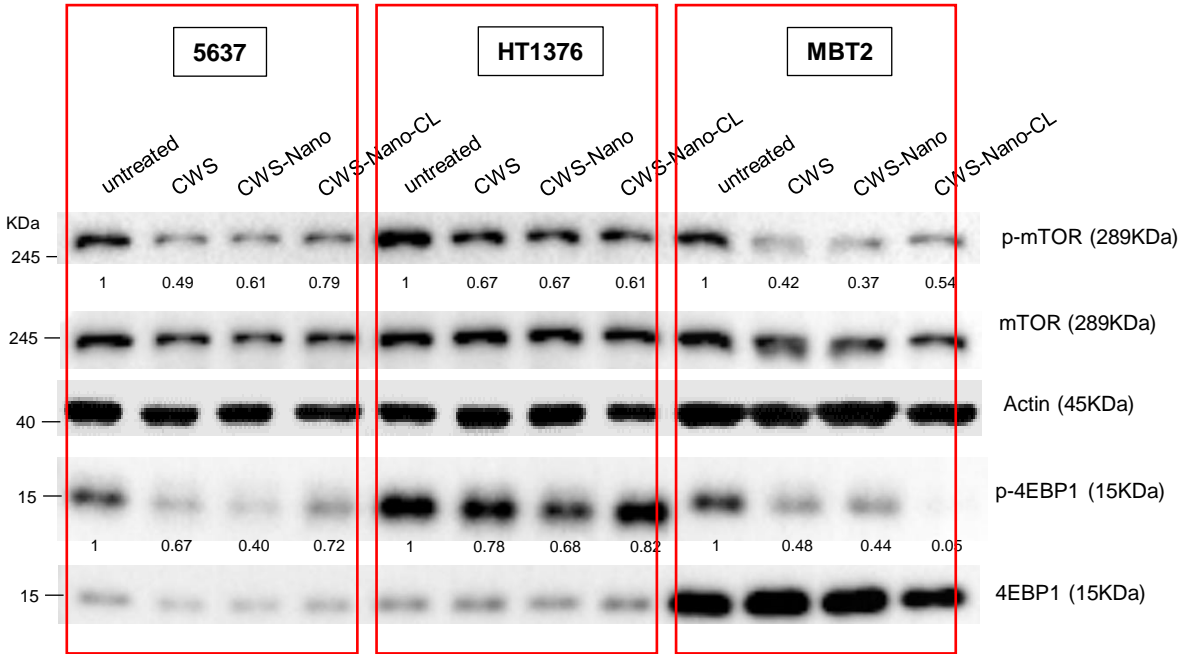


Figure 3B

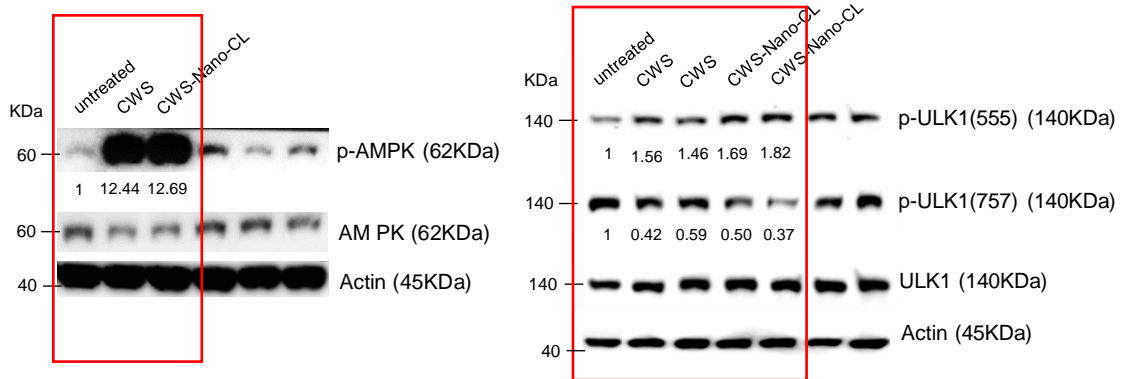


Figure 3C

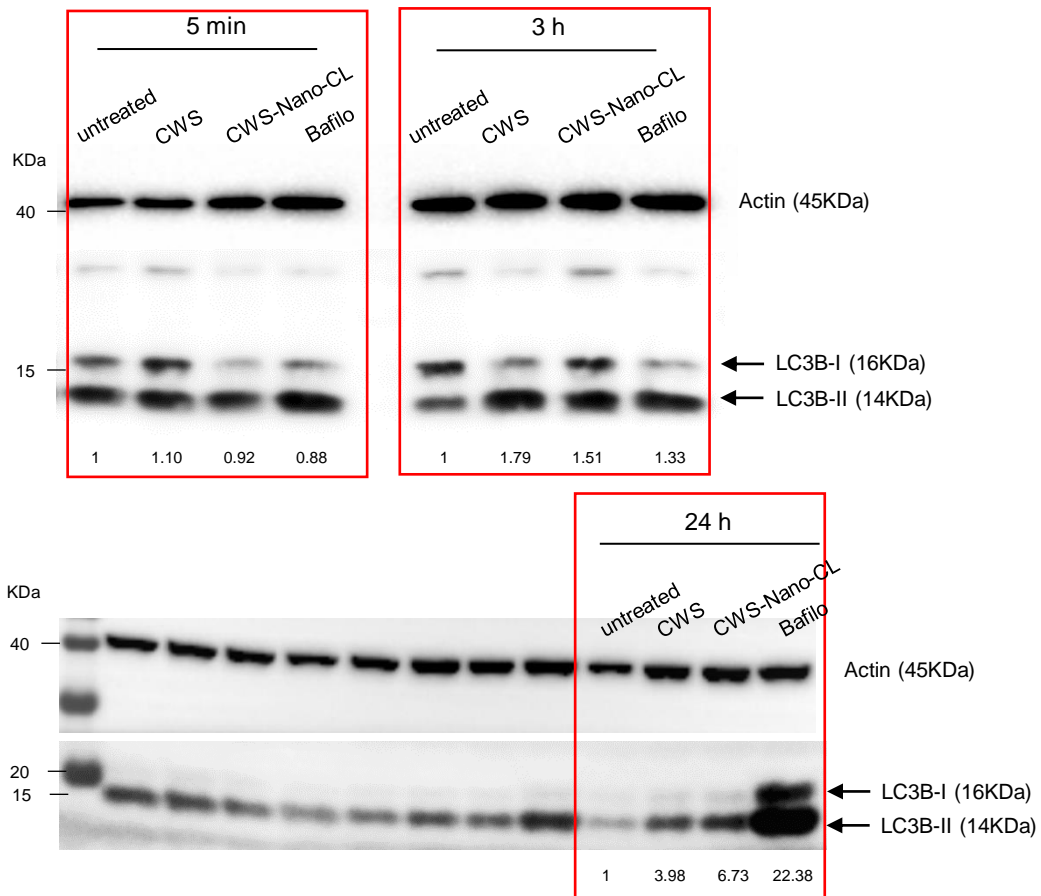


Figure 5A

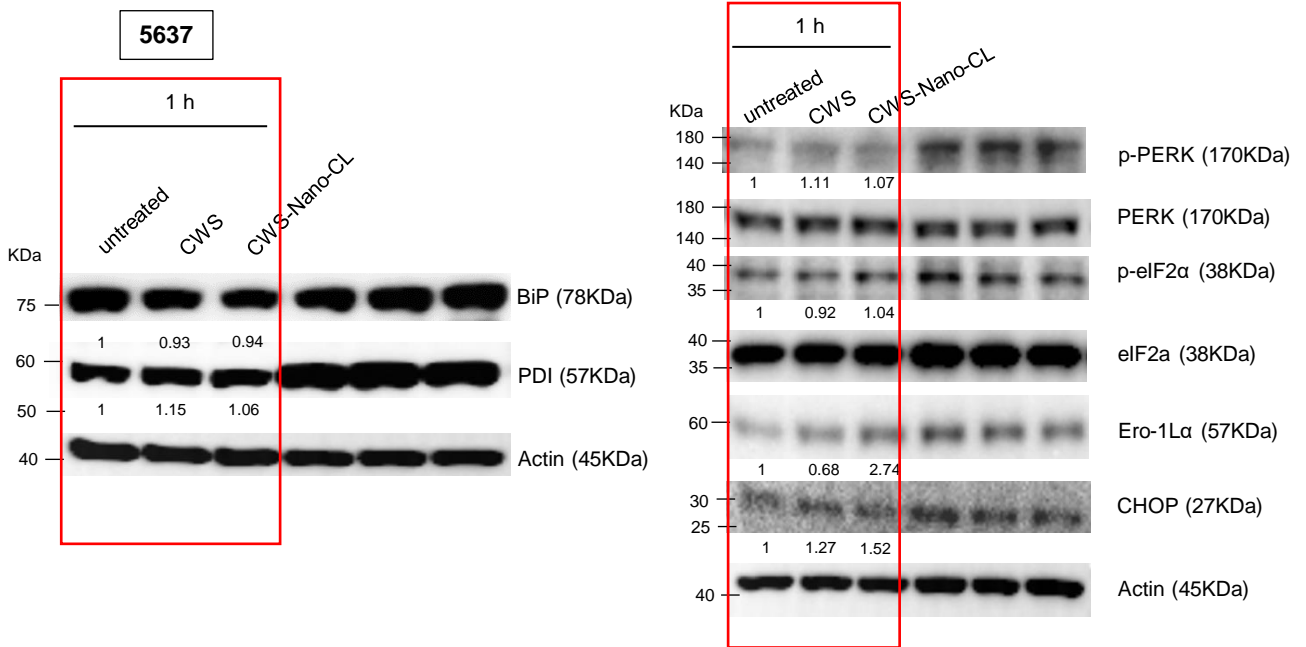


Figure 5B

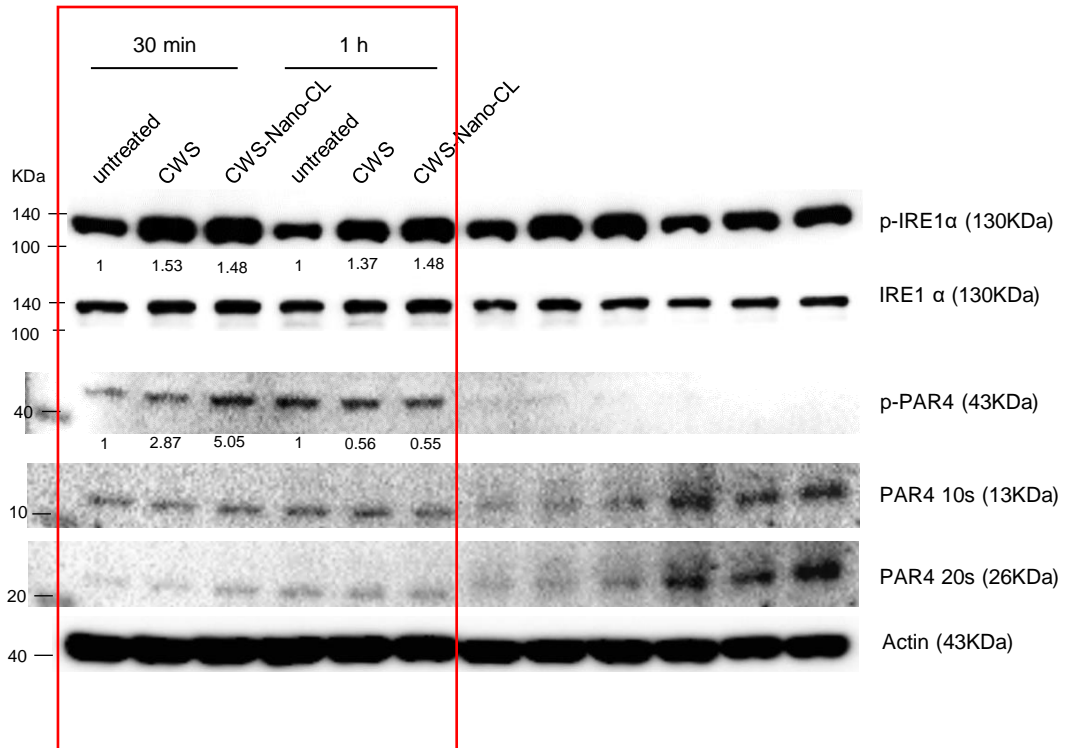


Figure 5B

