

SUPPLEMENTAL MATERIAL

Table S1. PHTS Sites.

Arkansas Children's Hospital

Boston Children's Hospital

University of California, San Francisco-Benioff Children's Hospital

Cleveland Clinic Children's

Cincinnati Children's Hospital Medical Center

Nationwide Children's Hospital

Cardinal Glennon Children's Medical Center

Children's Hospital of Los Angeles

Children's Hospital of Pittsburgh of UPMC

Children's Hospital of Wisconsin

Ann & Robert H. Lurie Children's Hospital of Chicago

University of Texas, Children's Medical Center

Children's Mercy Hospital and Clinics

Children's National Medical Center

The Children's Hospital of Philadelphia

Columbia University-Morgan Stanley Children's Hospital of New York Presbyterian

Duke Children's Hospital

Children's Healthcare of Atlanta

Freeman Hospital, Newcastle upon Tyne

University of Florida, Shands Hospital

Great Ormond Street Hospital for Children

Hospital for Sick Children

Riley Hospital for Children

Joe DiMaggio Children's Hospital

Johns Hopkins Hospital

University of Miami, Jackson Memorial Hospital

Levine Children's Hospital- Atrium Health

Loma Linda University Children's Hospital

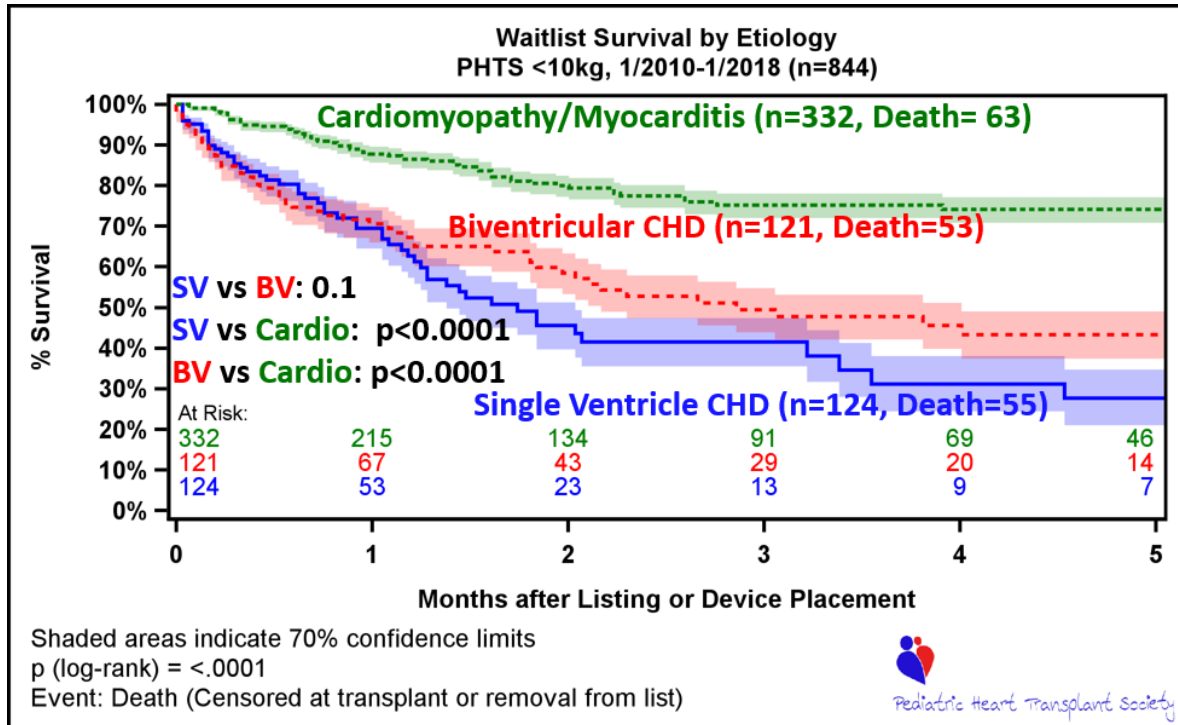
Norton Children's Hospital

University of Michigan, CS Mott Children's Hospital
University of Minnesota Masonic Children's Hospital
Children's Hospital at Montefiore
Medical University of South Carolina
Mount Sinai Medical Center
Nemours Cardiac Center
Children's Hospital and Medical Center
Phoenix Children's Hospital
Primary Children's Hospital
UC San Diego, Rady Children's Hospital
Seattle Children's Hospital
St. Louis Children's Hospital
Lucile Packard Children's Hospital at Stanford
Texas Children's Hospital
Children's of Alabama
Mattel Children's Hospital
Children's Hospital Colorado
University of Iowa Children's Hospital
UNC Children's Hospital
University of Alberta
Johns Hopkins All Children's Hospital
University of Virginia Medical Center
Monroe Carell Jr. Children's Hospital at Vanderbilt

Table S2. Covariates for Hazard Model.

- Etiology
- Race
- Sex
- Age at Listing, months (natural log, squared)
- Weight at Listing, Kg (natural log, squared)
- Ventilator status at Listing
- Status at Listing
- Inotropes at Listing
- History of Surgery
- History of Renal Insufficiency
- Years since 2010
- Creatinine (mg/dL)
- Bilirubin (mg/dL)
- Single Ventricle Congenital Heart Disease
- ECMO
- VAD

Figure S1. Waitlist survival following first device placement for children with CM, Biventricular CHD, and Single Ventricle CHD.



Time zero is device placement or listing (if device placed prior to listing). VAD: ventricular assist device;

ECMO: extracorporeal membrane oxygenation; CM: cardiomyopathy; CHD: congenital heart disease.