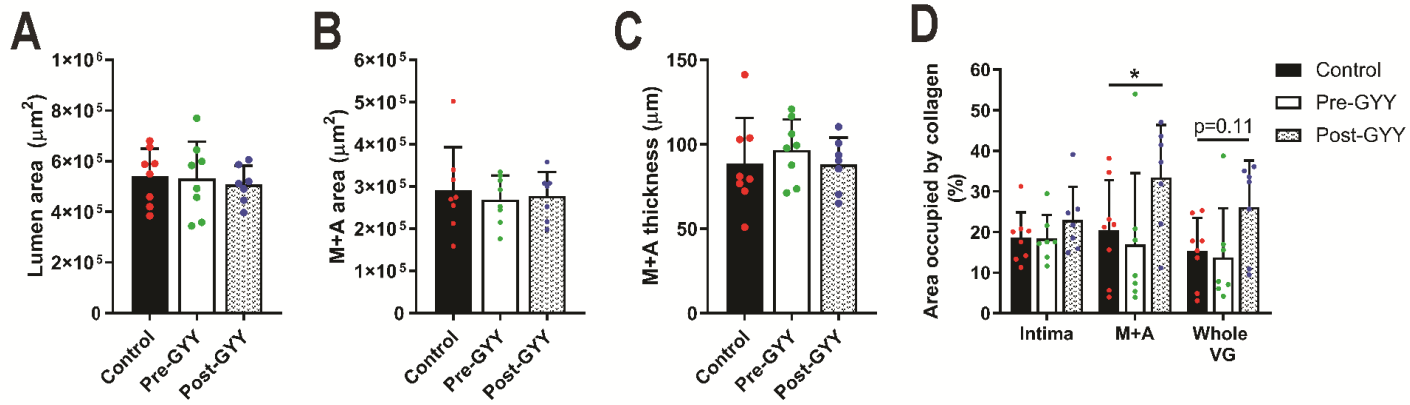


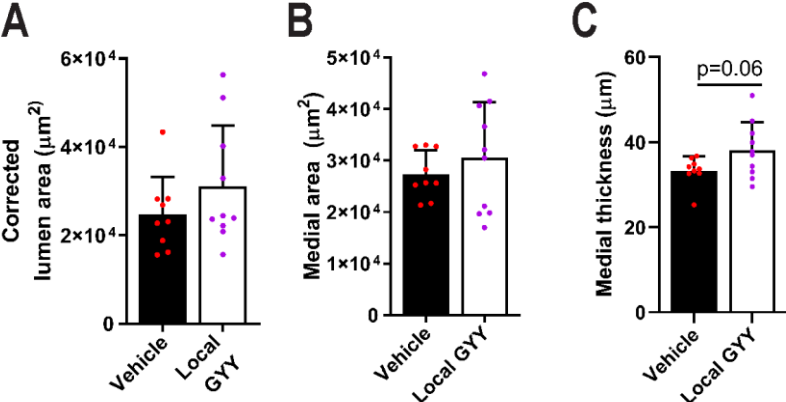
# **SUPPLEMENTAL MATERIAL**

Figure S1. Histomorphometric and collagen analysis after systemic H<sub>2</sub>S treatment.



**A-D:** Corrected lumen area in control, pre- and post-GYY treated vein grafts at POD28. **B:** M+A area. **C:** M+A thickness. **D:** Percent of intimal and M+A layers and whole VG occupied by collagen;  $n=7-8/\text{group}$ ; via two-way ANOVA with Tukey's multiple comparisons test. *Data represented as: Mean  $\pm$  SD.* H<sub>2</sub>S: hydrogen sulfide, GYY: hydrogen sulfide pro-drug, POD: post-operative day, M+A: media + adventitia, VG: vein graft.

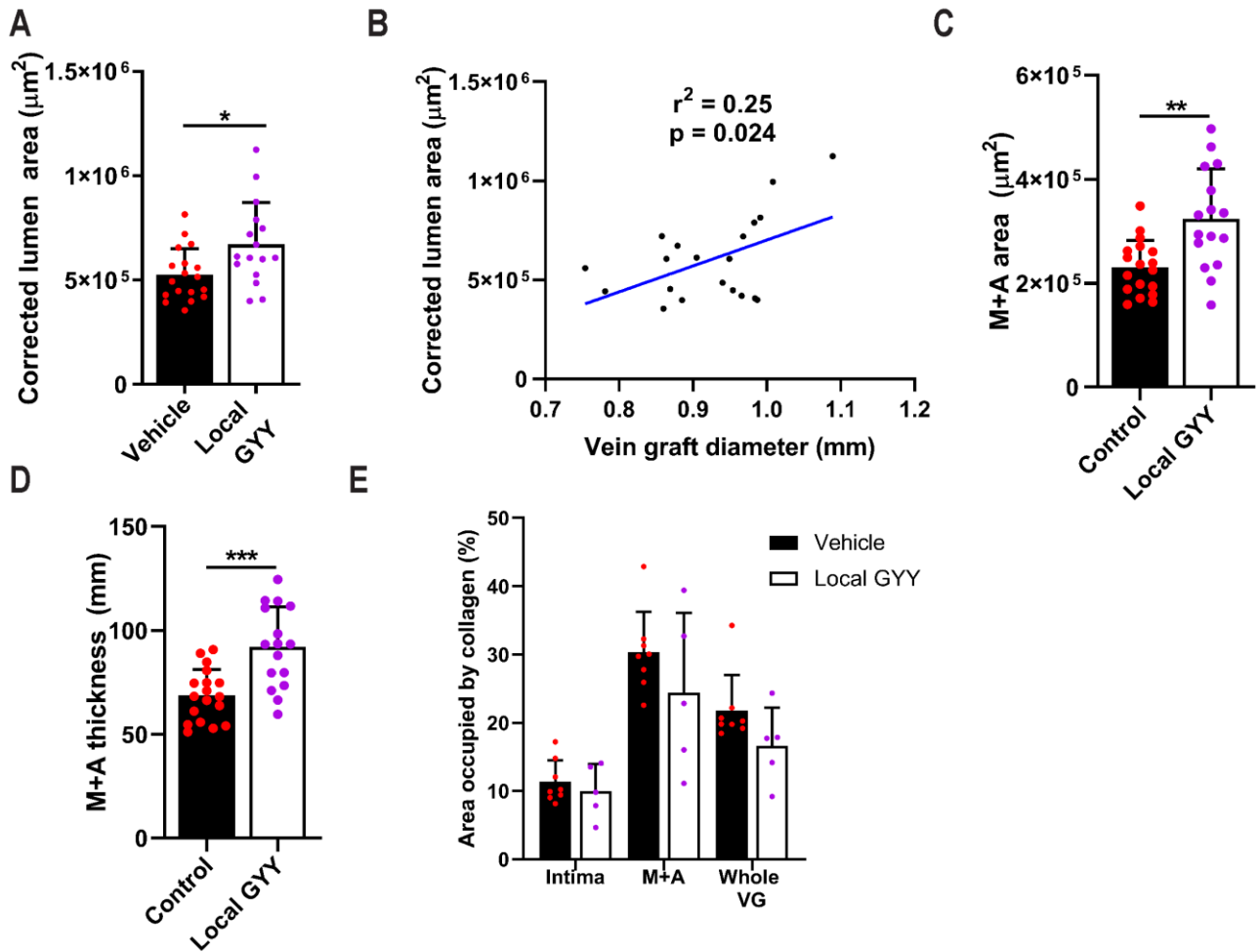
Figure S2. Hystomorphometric analysis of carotid arteries after local H<sub>2</sub>S treatment.



**A:** Averaged corrected lumen area in locally treated carotid arteries at POD28 after focal stenosis procedure.

**B:**M+A area. **C:** M+A thickness. *Data is represented as Mean  $\pm$  SD* H<sub>2</sub>S: hydrogen sulfide, POD: post-operative day, M+A: media + adventitia.

Figure S3. Histomorphometric and collagen analysis of vein graft after local H<sub>2</sub>S therapy.



**A:** Corrected lumen area in vehicle and local GYY treated vein grafts at POD28. **B:** Correlation between corrected luminal area after histology and vein graft diameter ultrasound measurements *in vivo*, both at POD28. **C:** M+A area. **D:** M+A thickness. **E:** Percentage of vein graft layers occupied by collagen. Data represented as Mean  $\pm$  SD. \* $p < 0.05$ , \*\* $p < 0.01$ , \*\*\* $p < 0.001$ . H<sub>2</sub>S: hydrogen sulfide, GYY: hydrogen sulfide pro-drug, POD: post-operative day, M+A: media + adventitia.