

SUPPLEMENTAL MATERIAL

Table S1. Baseline Characteristics of Propensity Score-Matched Patients.

Parameters	Diabetic		Nondiabetic		Standardized difference
	N	n (%) / Mean (SD)	N	n (%) / Mean (SD)	
Age, years, mean (SD)	3079	61.9 (10.6)	3079	62.4 (11.1)	-0.0463
Age group, years					
≤55		879 (28.6)		821 (26.7)	0.0692
56–64		937 (30.4)		957 (31.1)	
65–74		867 (28.2)		841 (27.3)	
≥75		396 (12.9)		460 (14.9)	
Male	3079	2171 (70.5)	3079	2165 (70.3)	0.0043
BMI, kg/m ² , mean (SD)	2792	25.1 (3.5)	2865	24.9 (3.6)	0.0766
≤25		1463 (52.4)		1518 (53.0)	-0.0117
>25		1329 (47.6)		1347 (47.0)	
Place of residence	3079		3079		
Rural		1012 (32.9)		1094 (35.5)	-0.0562
Metropolitan		2067 (67.1)		1985 (64.5)	
Insurance type	3079		3079		
Government		2055 (66.7)		2264 (73.5)	-0.1487
Private		318 (10.3)		286 (9.3)	0.0349
Employer provided		46 (1.5)		47 (1.5)	-0.0027
Other		116 (3.8)		126 (4.1)	-0.0167
None		592 (19.2)		416 (13.5)	0.1550
Hospital type	3079		3079		
Reg/comm/rural		170 (5.5)		153 (5.0)	0.2065

Non-university general		710 (23.1)		791 (25.7)	
University general		1569 (51.0)		1735 (56.4)	
Other		630 (20.5)		400 (13.0)	
Medical history					
Hypertension	3073	2146 (69.8)	3078	2165 (70.3)	-0.0110
Hypercholesterolemia	2925	739 (25.3)	2998	738 (24.6)	0.0150
Current smoker	2855	794 (27.8)	2904	755 (26.0)	0.0409
Prior PCI	2980	309 (10.4)	3009	281 (9.3)	0.0346
TIA/stroke	2973	185 (6.2)	3004	161 (5.4)	0.0370
PVD	2965	39 (1.3)	3000	31 (1.0)	0.0262
Chronic anemia	2991	34 (1.1)	3018	31 (1.0)	0.0106
Major bleeding	3014	15 (0.5)	3049	13 (0.4)	0.0105
In-hospital events					
Myocardial infarction	3043	140 (4.6)	3059	84 (2.8)	0.0987
Stroke	3053	6 (0.2)	3063	5 (0.2)	0.0079
Heart failure	3051	197 (6.5)	3058	171 (5.6)	0.0364
Severe arrhythmias	3028	139 (4.6)	3051	141 (4.6)	-0.0015
TVR	3079	2006 (65.2)	3079	2053 (66.7)	-0.0322
Bleeding					
Major	3079	14 (0.4)	3079	21 (0.7)	-0.0302
Minor	3079	46 (1.5)	3079	64 (2.1)	-0.0441
Clinical presentation					
STEMI		1427 (46.4)		1460 (47.4)	0.0359
NSTEMI		722 (23.5)		676 (22.0)	

Unstable angina		930 (30.2)		943 (30.6)	
Renal function, eGFR, mL/min/1.73 m ² , mean (SD)	3079	89.5 (35.0)	3079	88.6 (32.7)	0.0259
Renal function group, eGFR, mL/min/1.73 m ²					
<30		83 (2.7)		78 (2.5)	0.0162
30–59		477 (15.5)		464 (15.1)	
60–89		1118 (36.6)		1124 (36.5)	
≥90		1401 (45.5)		1413 (45.9)	
Laboratory tests					
Hemoglobin, g/dL, mean (SD)	2939	13.3 (2.0)	2937	13.5 (1.9)	−0.1108
Peak Cr, mg/dL, mean (SD)	2715	1.1 (0.8)	2788	1.1 (0.8)	0.0295
Positive cardiac markers	3020	2147 (71.1)	3034	2135 (70.4)	0.0159
Medications at discharge					
Beta-blocker	3063	2162 (70.6)	3072	2132 (69.4)	0.0258
Calcium channel blocker	3041	450 (14.8)	3068	445 (14.5)	0.0083
ACEi/ARB	3062	2000 (65.3)	3071	1956 (63.7)	0.0339
Any LLT	3079	2760 (89.6)	3079	2801 (91)	−0.0450
Atorvastatin		1644 (53.4)		1541 (50.1)	0.1379
Fluvastatin		44 (1.4)		48 (1.6)	
Pravastatin		23 (0.8)		31 (1.0)	
Rosuvastatin		623 (20.2)		696 (22.6)	
Simvastatin		352 (11.4)		440 (14.3)	
Multiple statins		19 (0.6)		15 (0.5)	
Other LLT only		55 (1.8)		30 (1.0)	

Diuretic	3046	583 (19.1)	3072	393 (12.8)	0.1739
Nitrate	2894	264 (9.1)	2876	253 (8.8)	0.0114
Any PPI	3079	1132 (36.8)	3079	1081 (35.1)	0.0345

ACEi, angiotensin-converting enzyme inhibitor; ARB, angiotensin II receptor blocker; BMI, body mass index; Cr, creatinine; eGFR, estimated glomerular filtration rate; LLT, lipid-lowering therapy; NSTEMI, non-ST-segment elevation myocardial infarction; PCI, percutaneous coronary intervention; PPI, proton pump inhibitor; PVD, peripheral vascular disease; Reg/comm/rural, regional/community/rural; STEMI, ST-segment elevation myocardial infarction; TIA, transient ischemic attack; TVR, target vessel revascularization.

Table S2. Angiographic and Percutaneous Coronary Intervention (PCI) Results in Diabetic and Nondiabetic Propensity Score-Matched Patients.

Parameters	Diabetic		Nondiabetic		Standardized difference
	N	n (%)	N	n (%)	
Catheterization during the index hospitalization	3036	2460 (81.0)	3050	2431 (79.7)	0.0333
Multivessel disease	3079	1585 (51.5)	3079	1421 (46.2)	0.1067
PCI	2997	1978 (66.0)	3034	2030 (66.9)	-0.0193
Emergency PCI	2997	919 (30.7)	3034	951 (31.3)	-0.0147
Target vessel	2381		2373		
Arterial bypass graft		1 (0)		1 (0)	0.0609
LAD		1339 (56.2)		1367 (57.6)	
LCX		346 (14.5)		299 (12.6)	
Left main		53 (2.2)		62 (2.6)	
RCA		639 (26.8)		641 (27.0)	
Vein bypass graft(s)		3 (0.1)		3 (0.1)	
Number of target vessels	2220		2233		
1		659 (29.7)		819 (36.7)	0.1608
2		669 (30.1)		658 (29.5)	
3		892 (40.2)		756 (33.9)	
Any stent	2997	1941 (64.8)	3034	1989 (65.6)	-0.0166
Number of stents	1941		1989		
1		1061 (54.7)		1195 (60.1)	0.1112
2		558 (28.8)		514 (25.8)	
>2		322 (16.6)		280 (14.1)	

Post-discharge interventions

Cardiac catheterization	3079	249 (8.1)	3079	254 (8.3)	-0.0059
Angiography	3079	139 (4.5)	3079	150 (4.9)	-0.0169
Balloon PCI	3079	27 (0.9)	3079	27 (0.9)	0.0000
Any stent	3079	133 (4.3)	3079	135 (4.4)	-0.0032
Bare metal stent	3079	14 (0.5)	3079	16 (0.5)	-0.0093
Drug-eluting stent	3079	119 (3.9)	3079	121 (3.9)	-0.0034

LAD, left anterior descending; LCX, left circumflex, RCA, right coronary artery.

Table S3. Antithrombotic Therapy in Diabetic and Nondiabetic Patients (Overall Cohort).

Parameters	Diabetic		Nondiabetic		P Value
	N	n (%)	N	n (%)	
In-hospital treatment					
Aspirin	3162	2940 (93.0)	9602	8956 (93.3)	0.57
Loading	3162	1166 (36.9)	9602	3834 (39.9)	<0.01
Any P2Y ₁₂ inhibitor	3162	2951 (93.3)	9602	8973 (93.5)	0.81
Clopidogrel	3162	2886 (91.3)	9602	8744 (91.1)	0.72
Loading	3162	1416 (44.8)	9602	4650 (48.4)	<0.001
Ticagrelor	3162	2 (0.1)	9602	6 (0.1)	0.99
Prasugrel	3162	88 (2.8)	9602	306 (3.2)	0.26
Ticlopidine	3162	11 (0.4)	9602	23 (0.2)	0.31
Cilostazol	3162	83 (2.6)	9602	166 (1.7)	<0.01
LMW heparin	3162	1705 (53.9)	9602	5393 (56.2)	<0.05
Fondaparinux	3162	317 (10.0)	9602	1027 (10.7)	0.29
GP IIb/IIIa inhibitor	3162	505 (16.0)	9602	1851 (19.3)	<0.0001
Warfarin/NOAC	3162	22 (0.7)	9602	55 (0.6)	0.44
Thrombolytics	3162	180 (5.7)	9602	670 (7.0)	0.01
At discharge					
Aspirin	3116	2972 (95.4)	9506	9123 (96.0)	0.15
Any P2Y ₁₂ inhibitor	3113	2941 (94.5)	9501	8996 (94.7)	0.65
Aspirin alone	3116	167 (5.4)	9506	480 (5.1)	0.50
P2Y ₁₂ inhibitor alone	3113	125 (4.0)	9501	306 (3.2)	<0.05

DAPT	3162	2792 (88.3)	9602	8638 (90.0)	<0.01
Cilostazol	3113	79 (2.5)	9501	173 (1.8)	0.01
Warfarin/NOAC	3162	30 (1.0)	9602	104 (1.1)	0.52
At 2 years					
Aspirin	2485	2216 (89.2)	7805	6865 (88.0)	0.10
Any P2Y ₁₂ inhibitor	2483	1650 (66.5)	7802	4816 (61.7)	<0.0001
Aspirin alone	2485	713 (28.7)	7806	2472 (31.7)	<0.01
P2Y ₁₂ inhibitor alone	2483	150 (6.0)	7802	397 (5.1)	0.07
DAPT	2485	1495 (60.2)	7805	4378 (56.1)	<0.001
Cilostazol	2483	28 (1.1)	7801	96 (1.2)	0.68
Warfarin/NOAC	2490	20 (0.8)	7827	78 (1.0)	0.39

DAPT, dual antiplatelet therapy; GP, glycoprotein; LMW, low molecular weight; NOAC, novel oral anticoagulant.

Results are unadjusted. *P* values from chi-square test or t-test as appropriate.

Table S4. Hazard Ratio (HR) for Clinical Events in Diabetic Versus Nondiabetic Patients (Overall Cohort).

Parameter	Diabetic		Nondiabetic		HR (95% CI*)	P Value
	N	n (%)	N	n (%)		
Composite endpoint (death, MI, and stroke)	3162	390 (12.3)	9602	690 (7.2)	1.77 (1.56, 2.01)	<0.0001
All-cause death	3162	236 (7.5)	9602	435 (4.5)	1.68 (1.43, 1.97)	<0.0001
MI	3162	146 (4.6)	9602	223 (2.3)	2.04 (1.66, 2.51)	<0.0001
Stroke	3162	61 (1.9)	9602	103 (1.1)	1.84 (1.34, 2.53)	<0.001
Any revascularization	3162	380 (12.0)	9602	1018 (10.6)	1.17 (1.04, 1.31)	0.01
PoCE	3162	689 (21.8)	9602	1556 (16.2)	1.40 (1.28, 1.53)	<0.0001
Bleeding	3162	213 (6.7)	9602	562 (5.9)	1.18 (1.01, 1.38)	<0.05
Major	3162	10 (0.3)	9602	31 (0.3)	1.00 (0.49, 2.04)	>0.99

Results are unadjusted. *From univariate Cox proportional hazards model.

CI, confidence interval; CV, cardiovascular; DM, diabetes mellitus; MI, myocardial infarction; PoCE, patient-oriented composite endpoint.

Table S5. Independent Predictors of Patient-oriented Composite Endpoint (All-cause Death, Myocardial Infarction (MI), Stroke, and Revascularization), Revascularization, and Major Bleeding Events among Diabetes Mellitus Patients Based on Final Multivariable Cox Proportional Hazards Model*

Parameter		Overall P Value
Predictors	HR (95% CI)	
PoCE (all-cause death, MI, stroke and revascularization)		
Cardiac catheterization for index event	0.65 (0.54, 0.77)	<0.0001
Country/region, versus China		<0.0001
Hong Kong, Singapore, South Korea	1.11 (0.86, 1.42)	
India	0.38 (0.30, 0.48)	
Malaysia, Thailand, Vietnam	1.17 (0.92, 1.47)	
Discharge medications: diuretics	1.47 (1.24, 1.76)	<0.0001
eGFR group, ml/min/1.73 m ² , versus <30		0.0001
≥30–<60	0.80 (0.58, 1.11)	
≥60–<90	0.67 (0.49, 0.92)	
≥90	0.54 (0.39, 0.74)	
Final diagnosis of index admission event, versus STEMI		<0.0001
NSTEMI	1.37 (1.14, 1.64)	
UA	0.80 (0.66, 0.97)	
Revascularization		
Country/region, versus China		<0.0001
Hong Kong, Singapore, South Korea	1.34 (0.99, 1.80)	

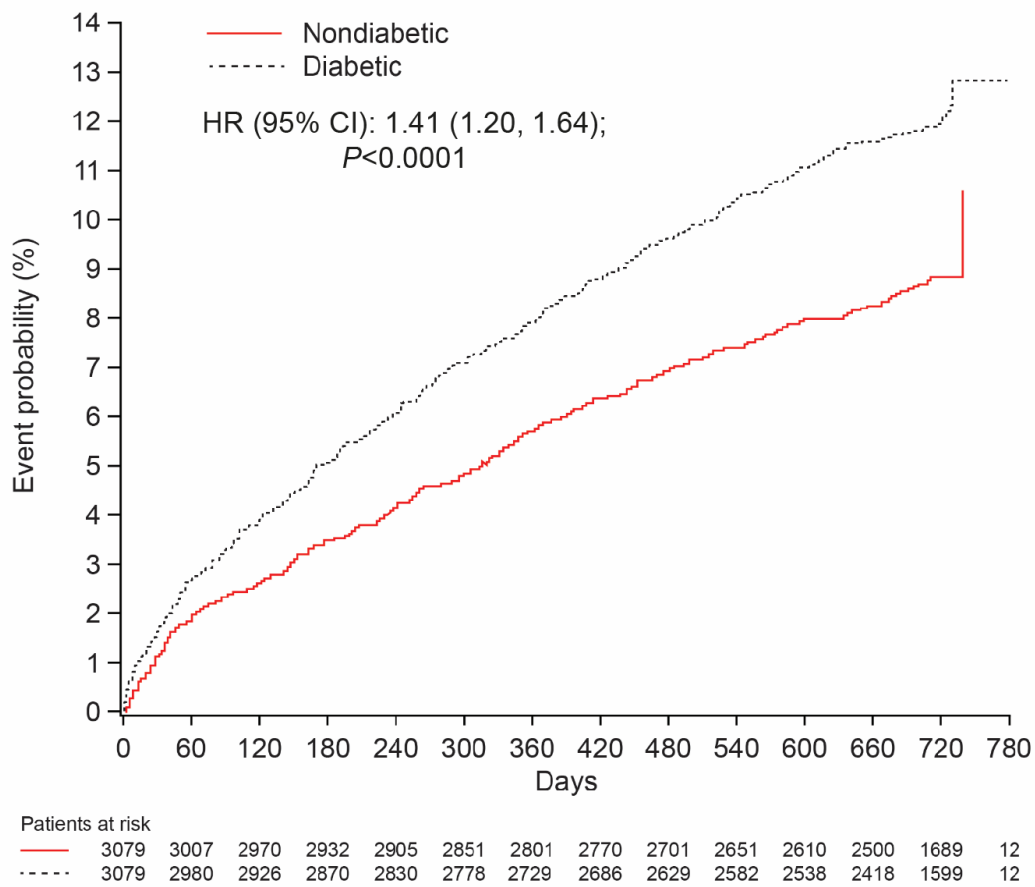
India	0.19 (0.11, 0.30)	
Malaysia, Thailand, Vietnam	1.34 (0.98, 1.85)	
Final diagnosis of index admission event, versus STEMI		<0.001
NSTEMI	1.49 (1.17, 1.89)	
UA	0.88 (0.68, 1.13)	
Discharge medications: H ₂ -receptor antagonist	1.78 (1.24, 2.55)	<0.01
Discharge medications: omeprazole	1.90 (1.41, 2.55)	<0.0001
Place of residence: metropolitan	1.65 (1.27, 2.13)	0.0001
Major bleeding		
Discharge medications: aldosterone inhibitors	5.95 (1.67, 21.18)	<0.01
Discharge medications: NSAIDs	14.92 (3.15, 70.61)	<0.001

CI, confidence interval; eGFR, estimated glomerular filtration rate; HR, hazard ratio; NSAIDs, nonsteroidal anti-inflammatory drugs; NSTEMI, non-ST-segment elevation myocardial infarction; PoCE, patient-oriented composite endpoint; STEMI, ST-segment elevation myocardial infarction; UA, unstable angina.

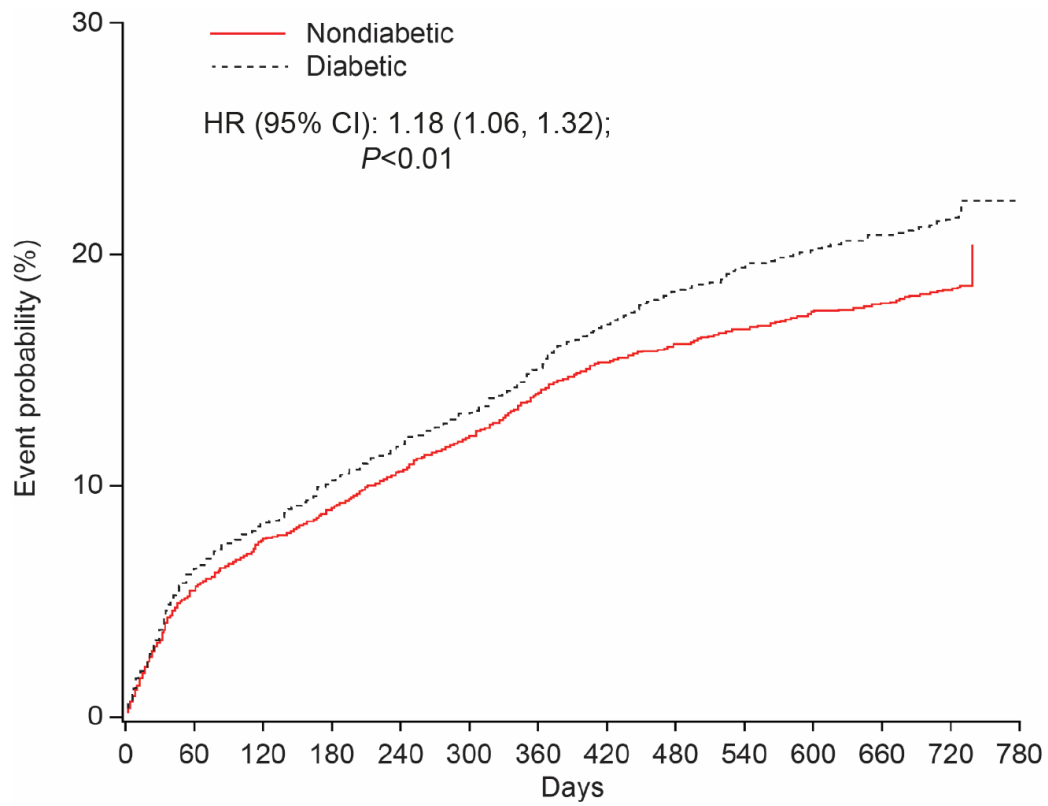
Variable selection was done by step-wise procedure with the *P* value cut-offs for selection at *P*<0.01 and retention at *P*<0.20. For each outcome, the final model only included the variables shown in this table.

Figure S1. Kaplan–Meier risk curves of (A) composite endpoint, (B) patient-oriented composite endpoint, (C) death, and (D) bleeding, through 2 years in diabetic and nondiabetic patients, for propensity score-matched cohort.

A



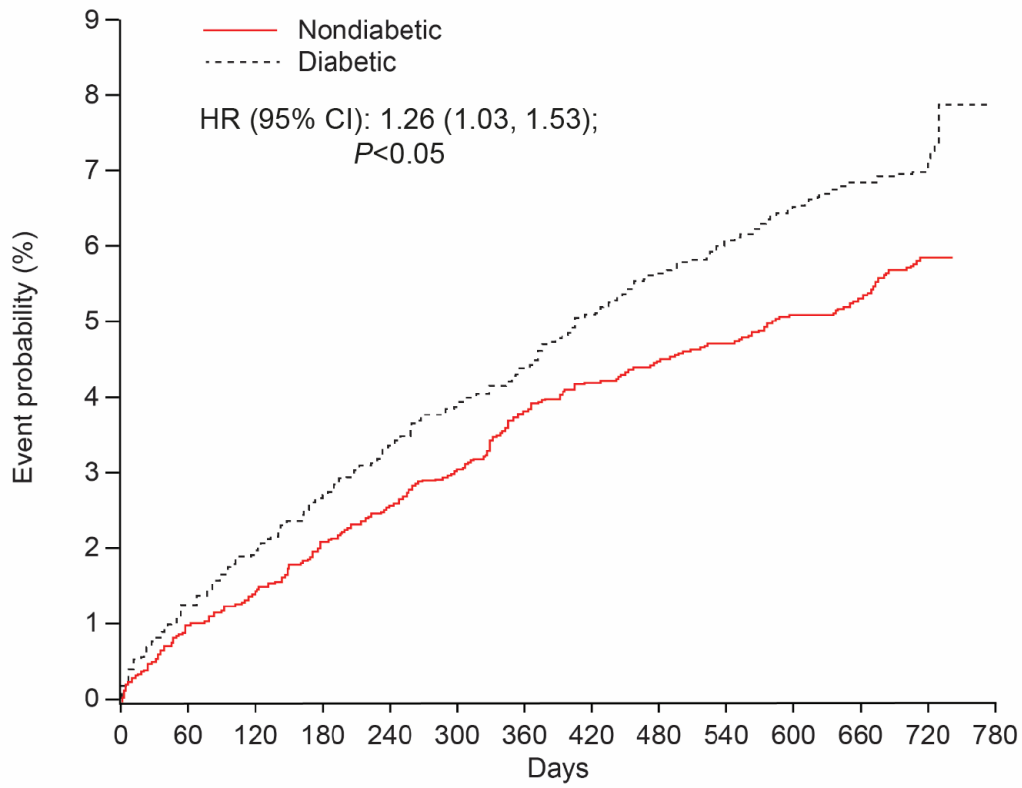
B



Patients at risk

—	3079	2899	2818	2763	2706	2631	2555	2503	2434	2376	2331	2233	1503	11
- - -	3079	2867	2789	2714	2657	2595	2510	2435	2368	2315	2270	2152	1418	10

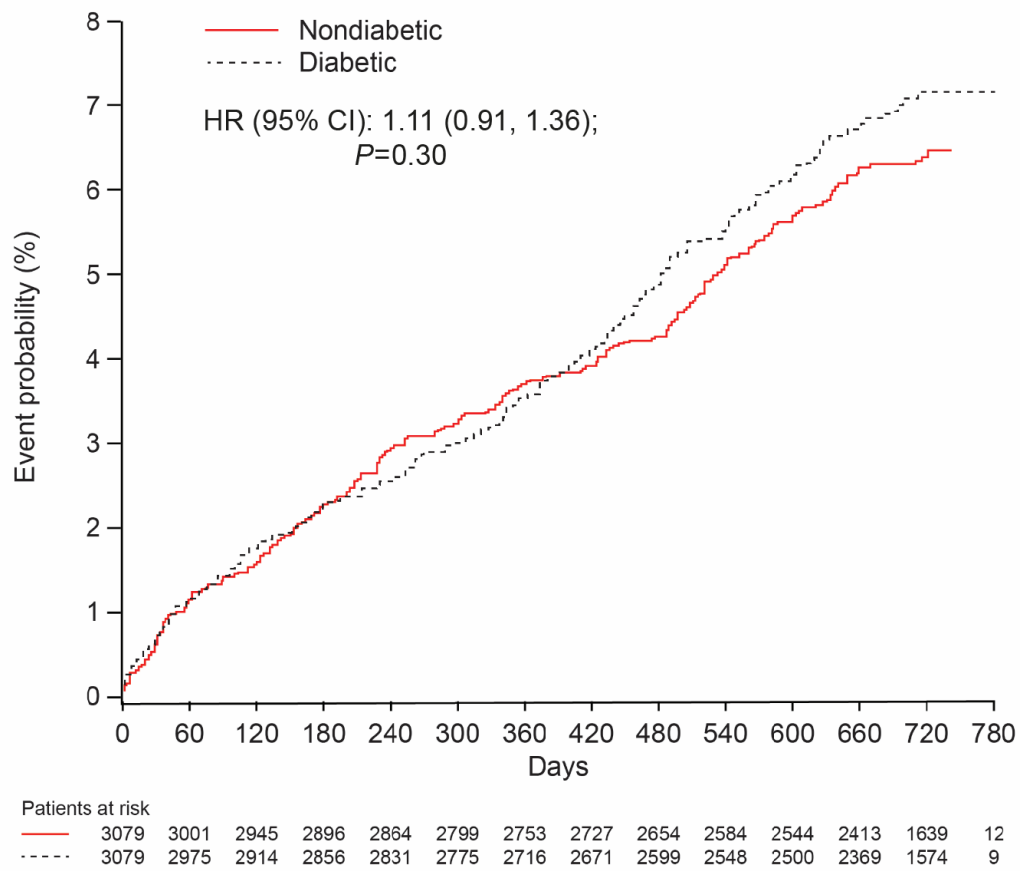
C



Patients at risk

—	3079	3037	3006	2973	2952	2904	2857	2834	2771	2724	2689	2578	1732	12
- - -	3079	3024	2984	2942	2913	2872	2831	2793	2740	2702	2660	2543	1672	14

D



Cardiovascular events: composite of all-cause death, myocardial infarction (MI) and ischemic stroke.

Patient-oriented composite endpoint: composite of all-cause death, MI, stroke, and revascularization.

CI, confidence interval; HR, hazard ratio.