

Supplementary Materials: ZIP4 Is a Novel Cancer Stem Cell Marker in High-Grade Serous Ovarian Cancer

Qipeng Fan, Wen Zhang, Robert E. Emerson and Yan Xu

Tumors formed from Patient-Derived Xenograft model

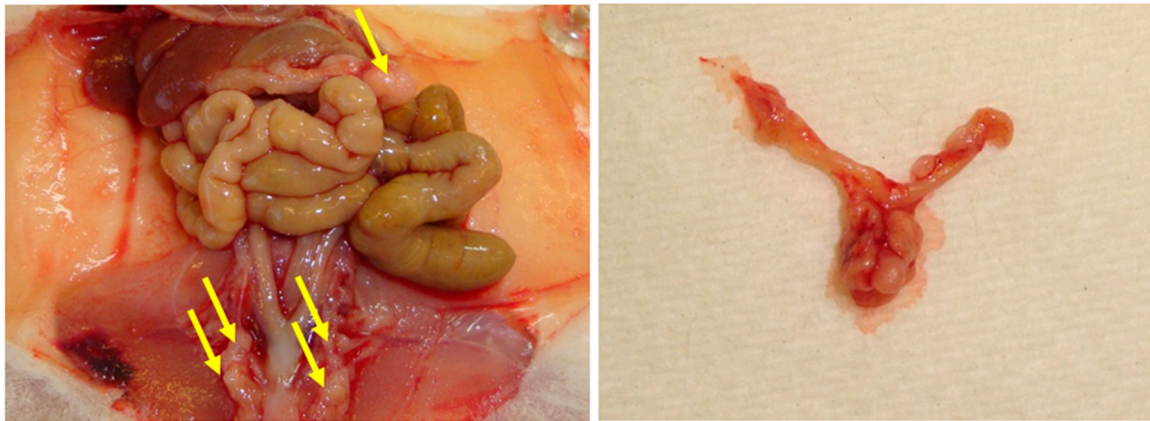


Figure S1. Representative photographs of tumors formed in Patient-Derived Xenograft model.

Figure 1

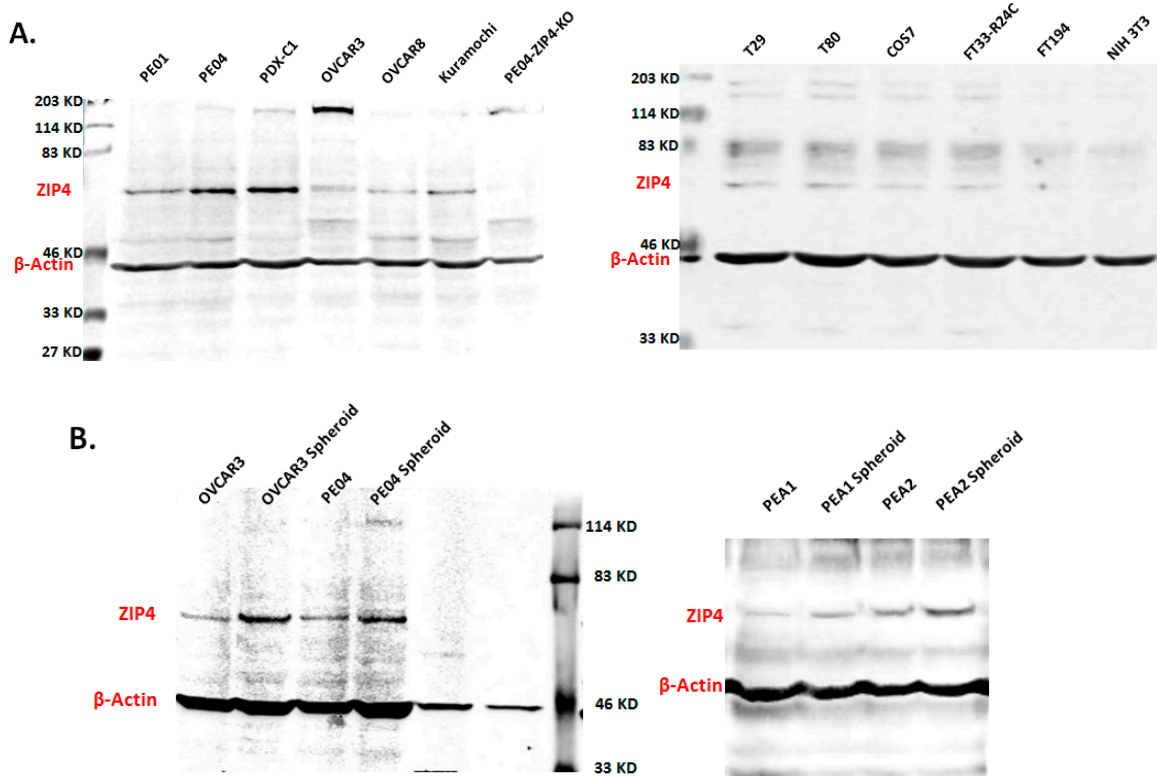


Figure 5

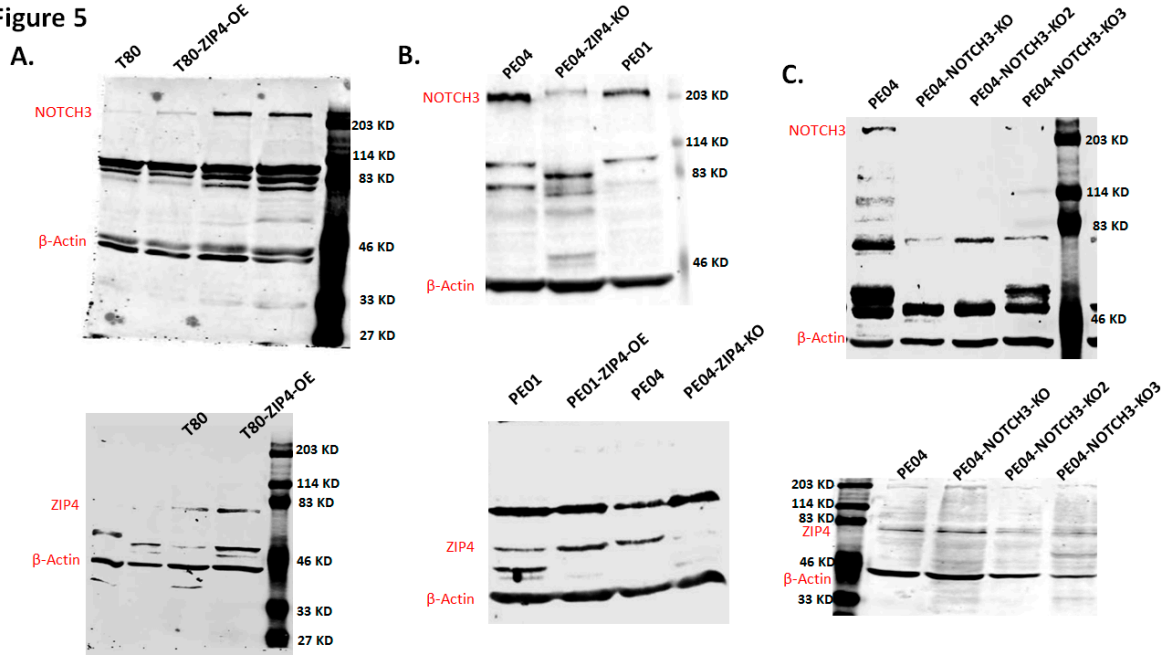


Figure 6

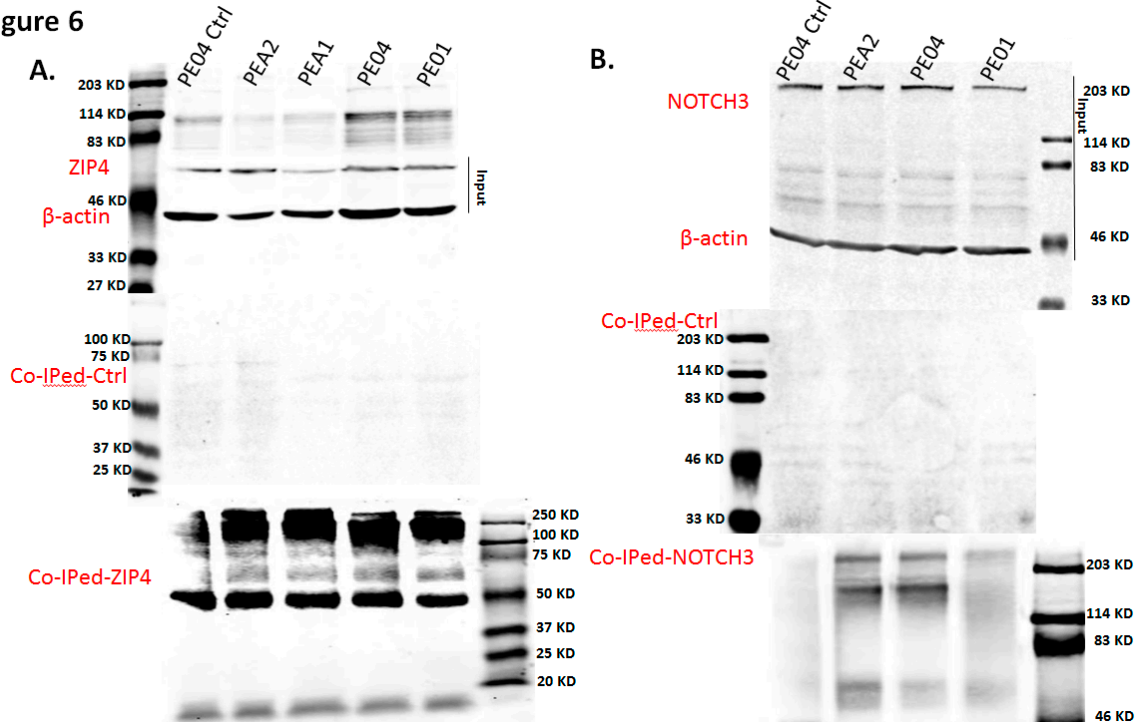


Figure S2. Uncropped Western blots. The Western blots showing all the bands with molecular weight markers for Figs 1, 5, and 6.

Publisher's Note: MDPI stays neutral with regard to jurisdictional claims in published maps and institutional affiliations.



© 2020 by the authors. Licensee MDPI, Basel, Switzerland. This article is an open access article distributed under the terms and conditions of the Creative Commons Attribution (CC BY) license (<http://creativecommons.org/licenses/by/4.0/>).