

Correlation between the T/S ratio and TRF

Figure. S1. Correlation between the relative telomere length to single-copy gene (T/S) ratio determined by quantitative PCR and mean telomeric restriction fragment (TRF) length determined by Southern blot analysis using DNA samples prepared from neonatal cord blood.

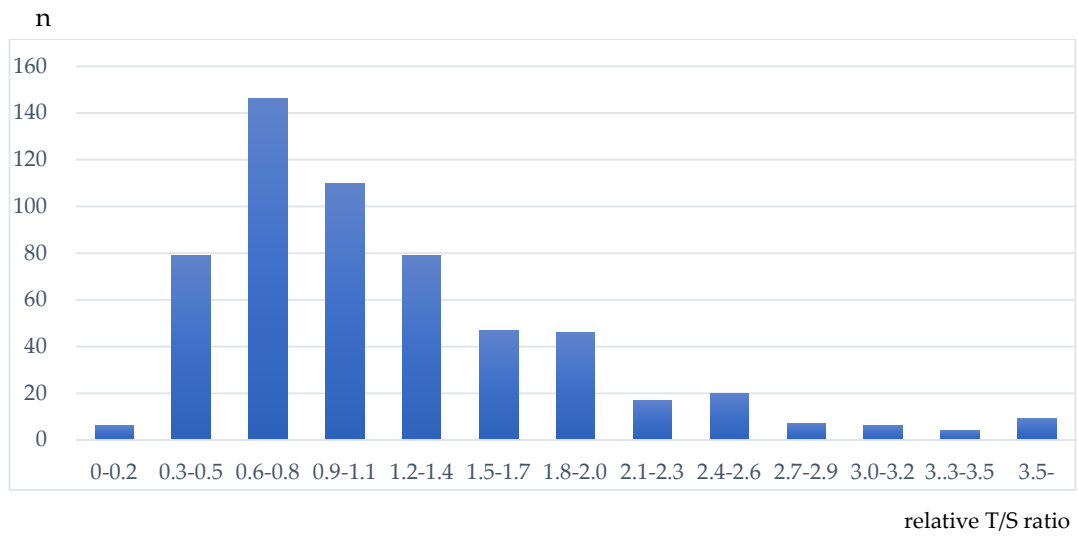


Figure . S2. Distribution of neonatal telomere length. T/S ratio: telomere length to single-copy gene ratio.