

# **TNFAIP8 drives metabolic reprogramming to promote prostate cancer cell proliferation**

Suryakant Niture<sup>a#</sup>, Minghui Lin<sup>b#</sup>, Joab O. Odera<sup>a</sup>, John Moore<sup>a</sup>, Hong Zhe<sup>c</sup> Xiaoxin Chen<sup>a</sup>, Simeng Suy<sup>d</sup>, Sean P. Collins<sup>d</sup> and Deepak Kumar<sup>a\*</sup>

<sup>a</sup>Julius L. Chambers Biomedical Biotechnology Research Institute, North Carolina Central University Durham, NC 27707, USA;

<sup>b</sup>Ningxia Medical University, Yinchuan, Ningxia, 750004, China; <sup>c</sup>Department of Radiation Oncology, General Hospital of Ningxia Medical University, Yinchuan, Ningxia, 750004 China; <sup>d</sup>Department of Radiation Medicine, Georgetown University Hospital, Washington, DC 20057, USA

## **\*Corresponding author**

Deepak Kumar, PhD

Julius L. Chambers Biomedical/Biotechnology Research Institute (BBRI),

North Carolina Central University

1801 Fayetteville St. Durham NC 27707, USA

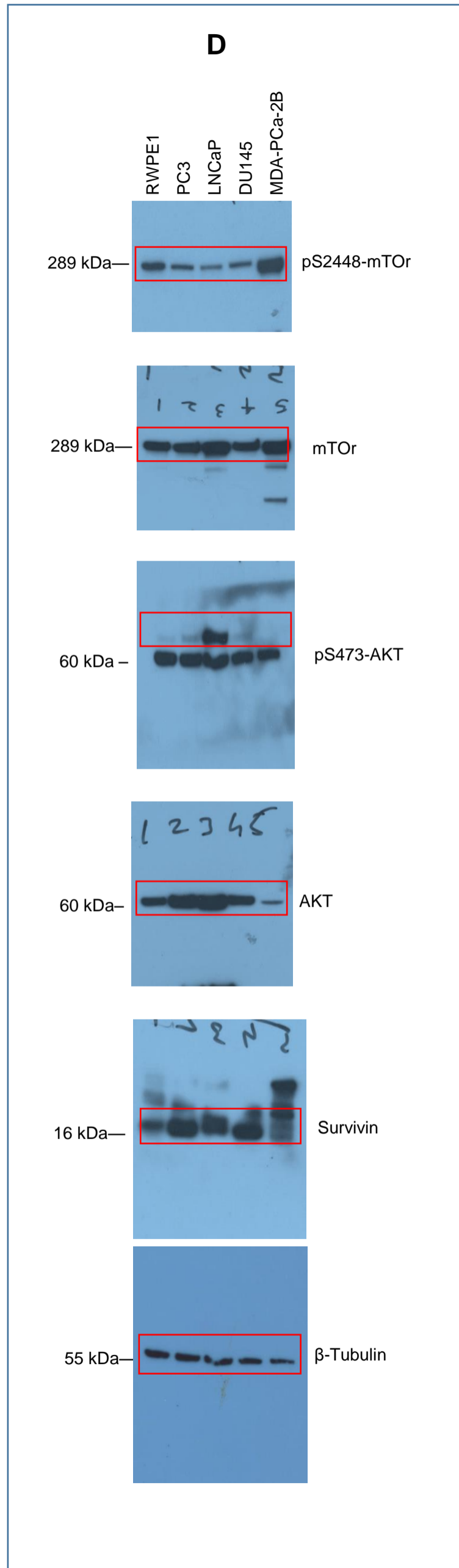
Phone: 919-530-7017

Email: [dkumar@nccu.edu](mailto:dkumar@nccu.edu)

# Equal contribution

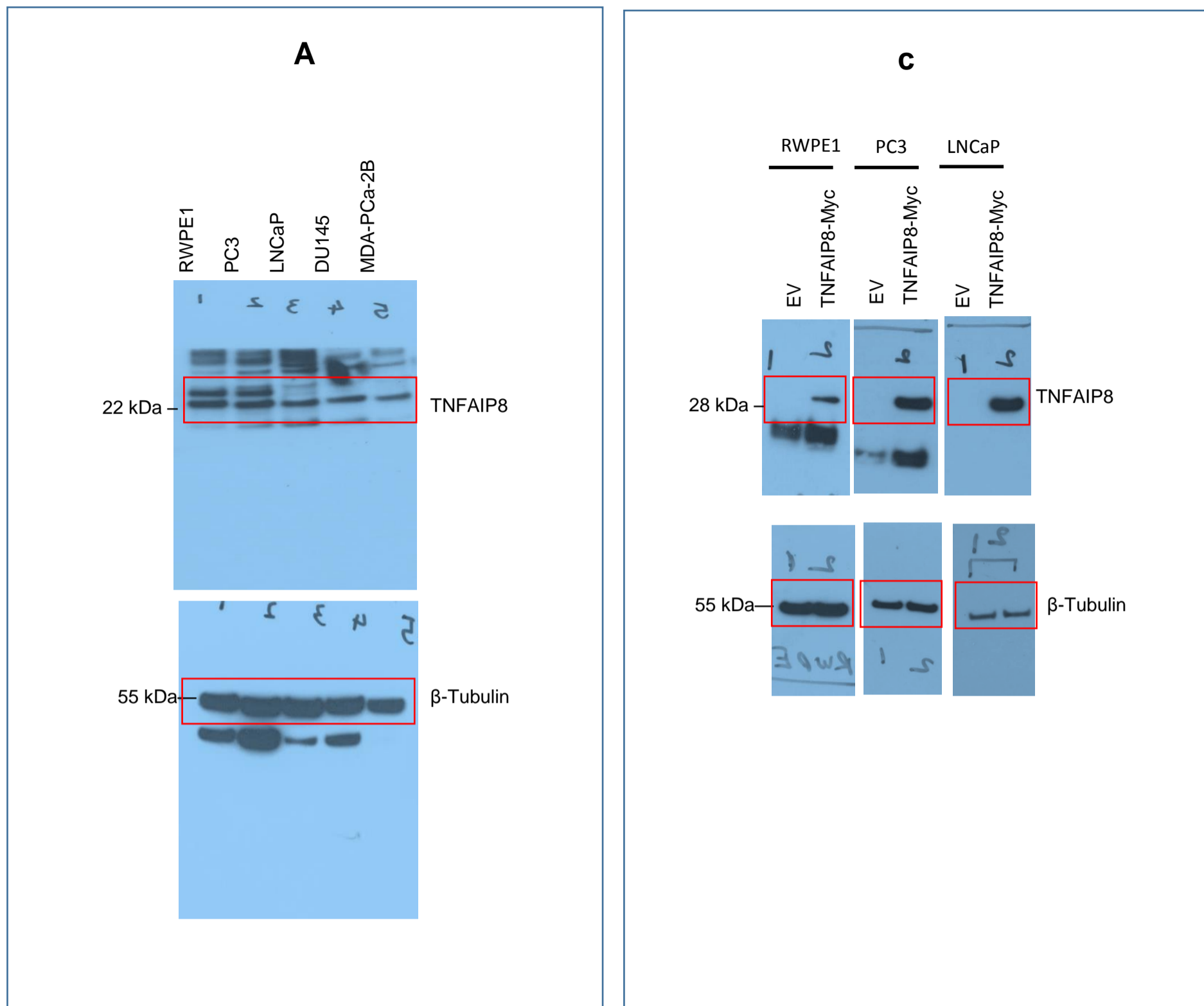
**Supplementary materials  
Western Blots**

**Fig. 1**

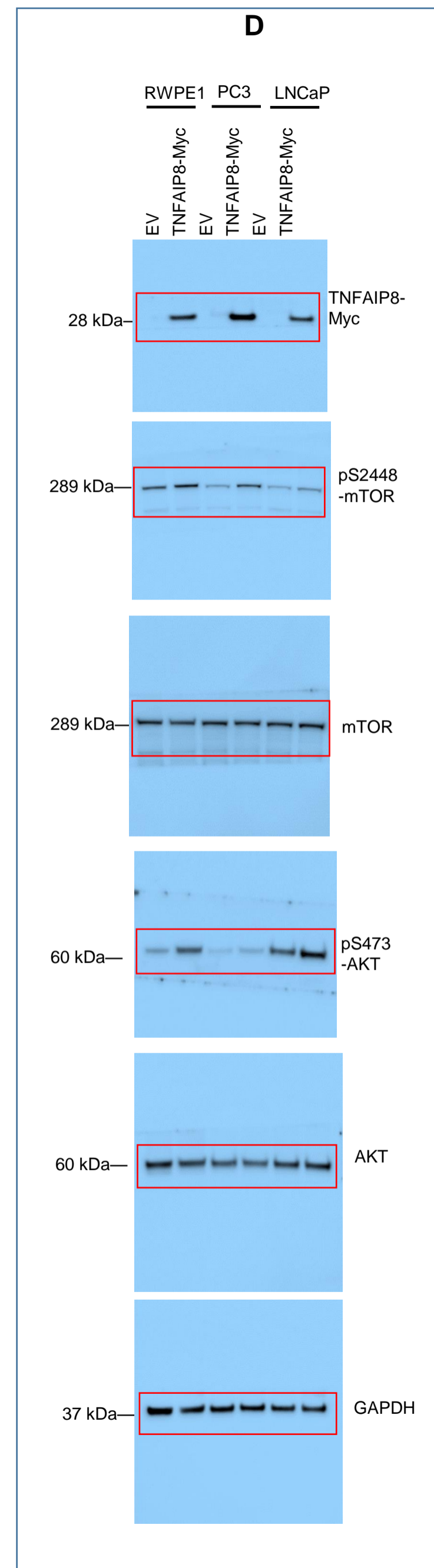
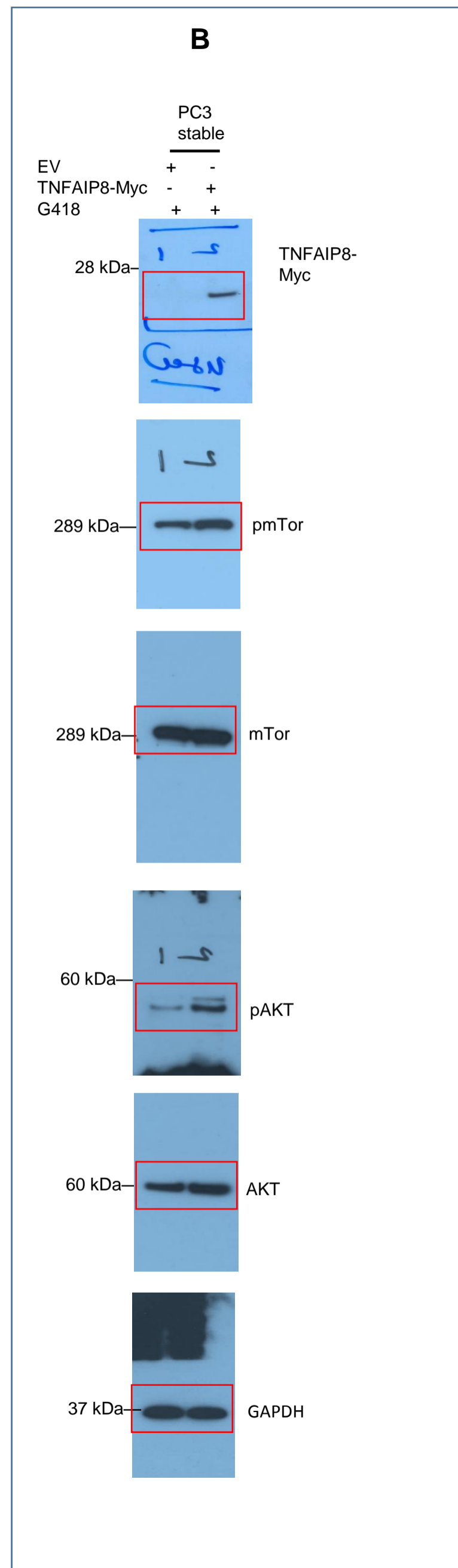
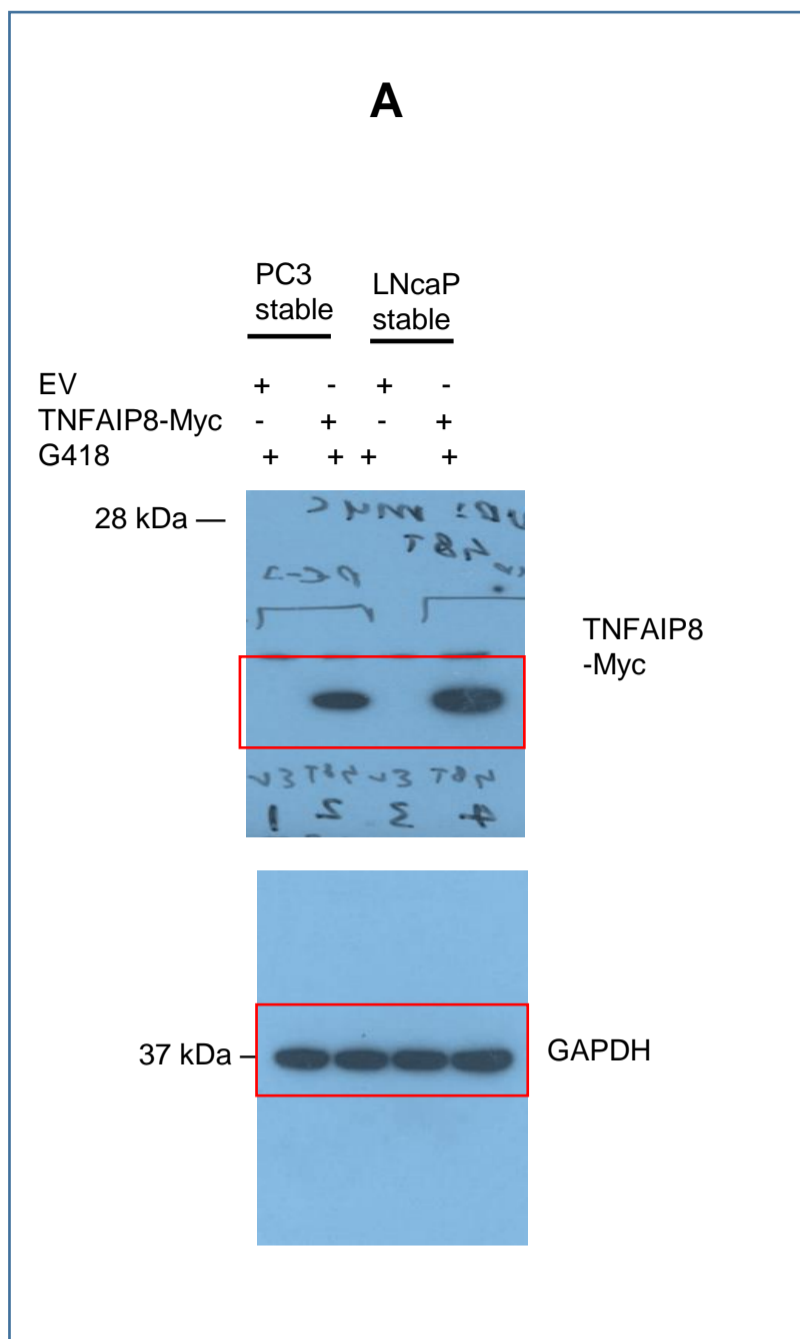


Full length images of blots for Fig. 1D in main paper. The red rectangles indicate the regions used in the figures. PVDF membranes were used for probing with the respective primary antibody.

**Fig. 2**

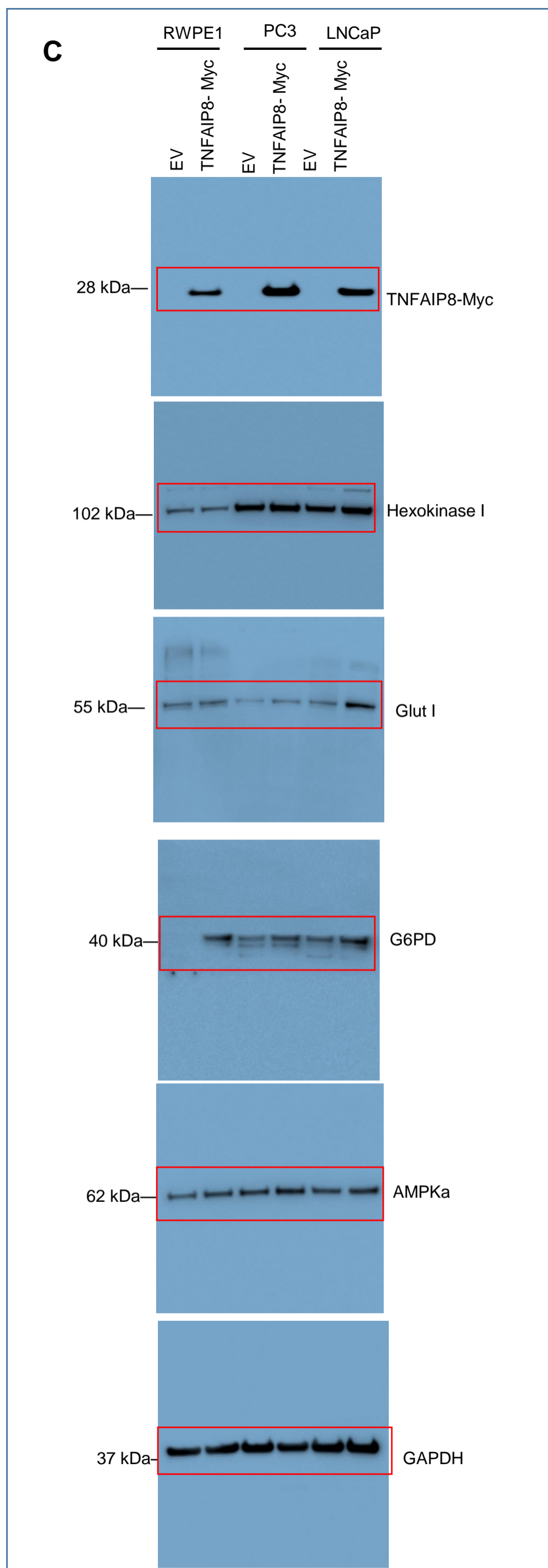


Full length images of blots for Fig. 2A & C in main paper. The red rectangles indicate the regions used in the figures. PVDF membranes were used for probing with the respective primary antibody.

**Fig. 3**

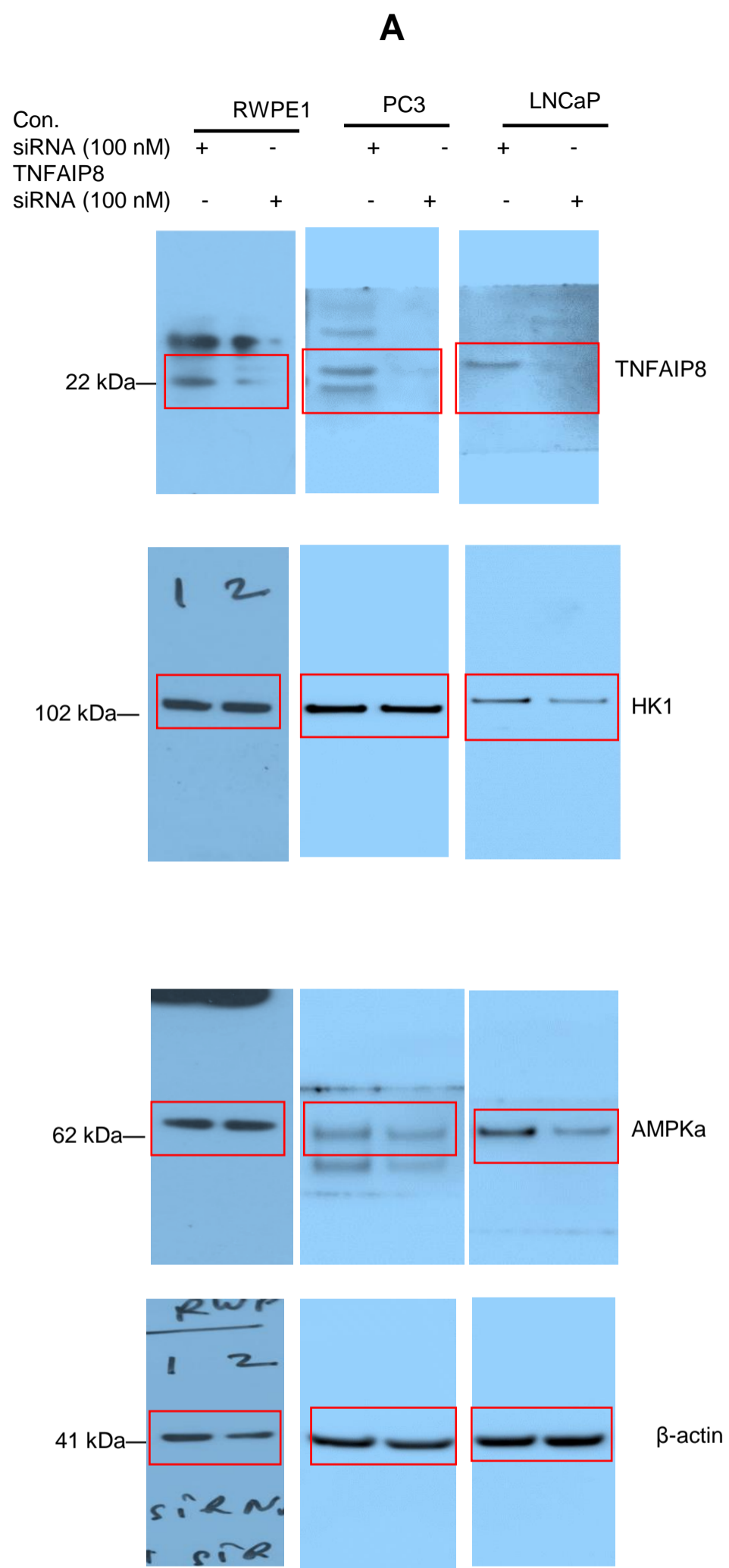
Full length images of blots for Fig. 3A, B and D in main paper. The red rectangles indicate the regions used in the figures. PVDF membranes were used for probing with the respective primary antibody.

**Fig. 4**



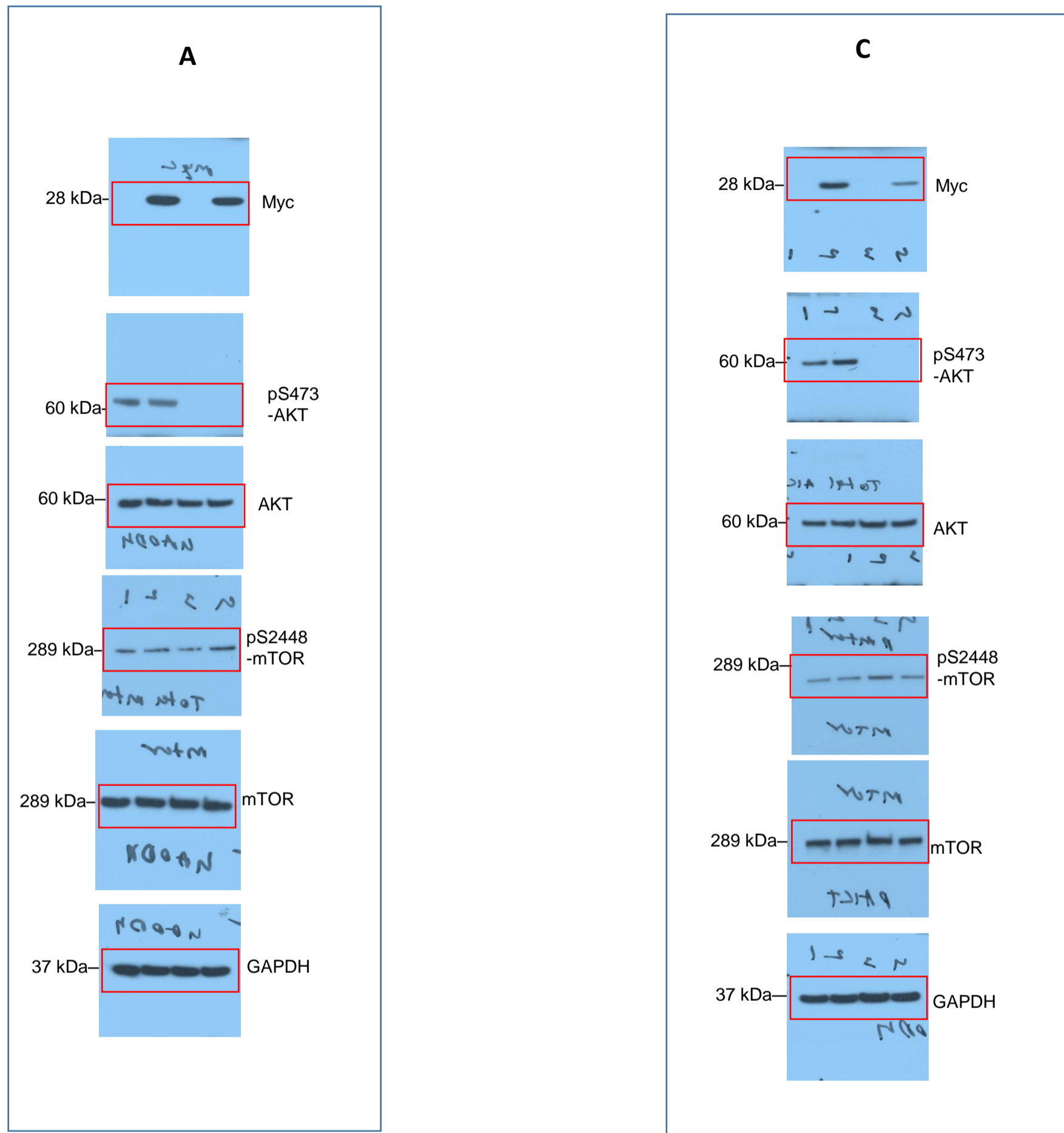
Full length images of blots for Fig. 4C in main paper. The red rectangles indicate the regions used in the figures. PVDF membranes were used for probing with the respective primary antibody.

**Fig. 5**



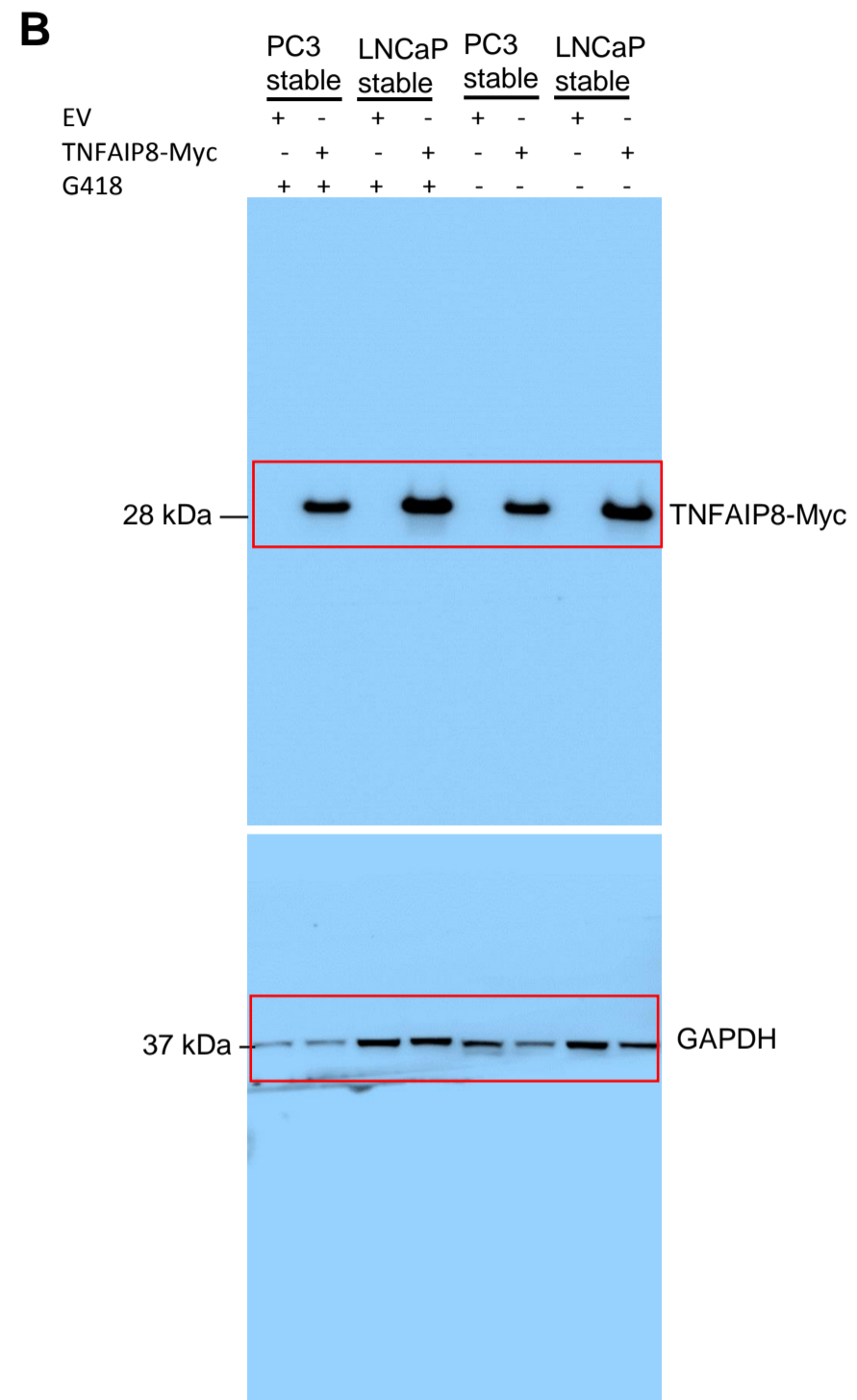
Full length images of blots for Fig. 5A in main paper. The red rectangles indicate the regions used in the figures. PVDF membranes were used for probing with the respective primary antibody.

Fig. S2



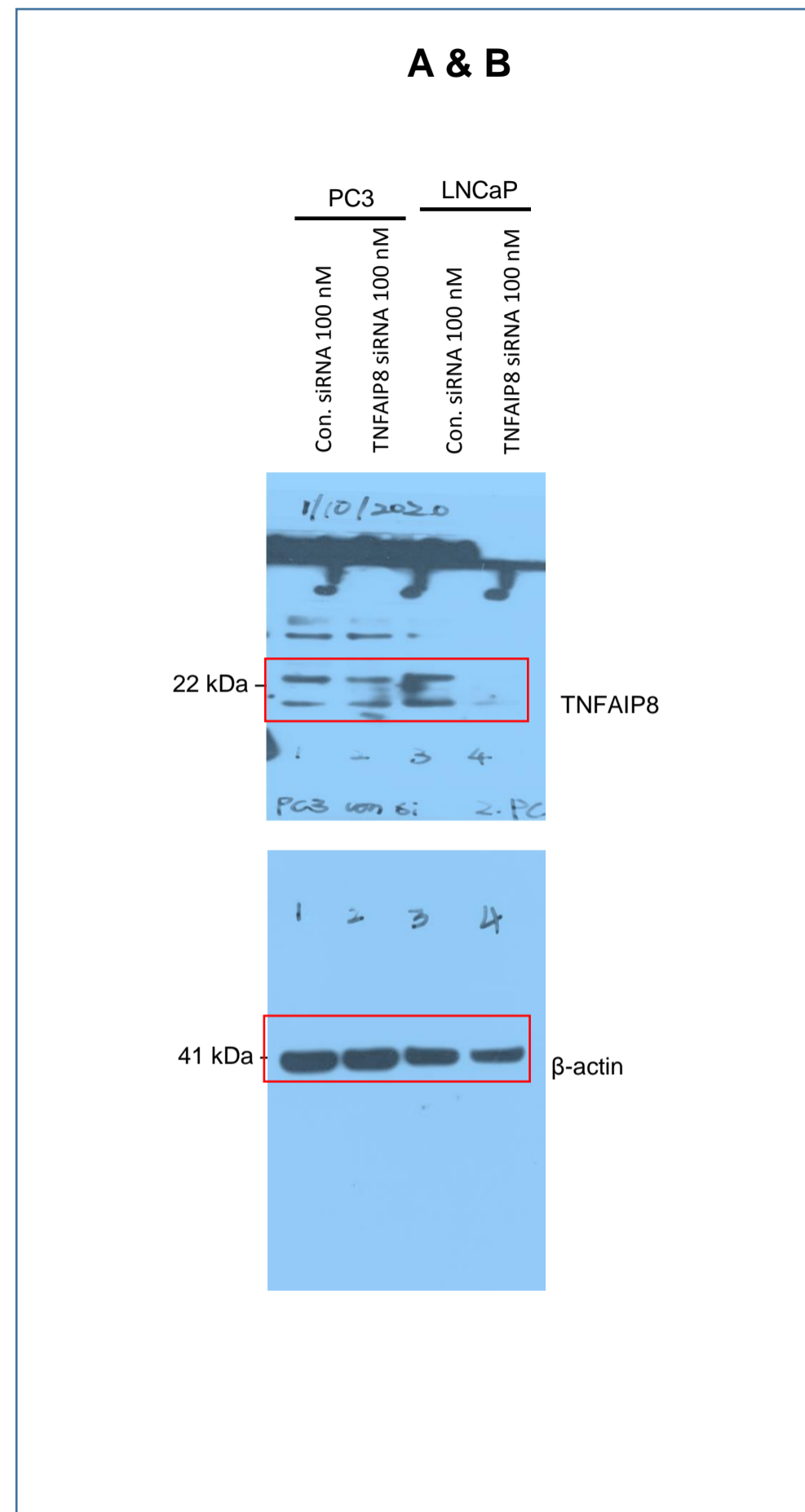
Full length images of blots for Fig. S2 A & C in the supplementary figures. The red rectangles indicate the regions used in the figures. PVDF membranes were used for probing with the respective primary antibody.

Fig. S3



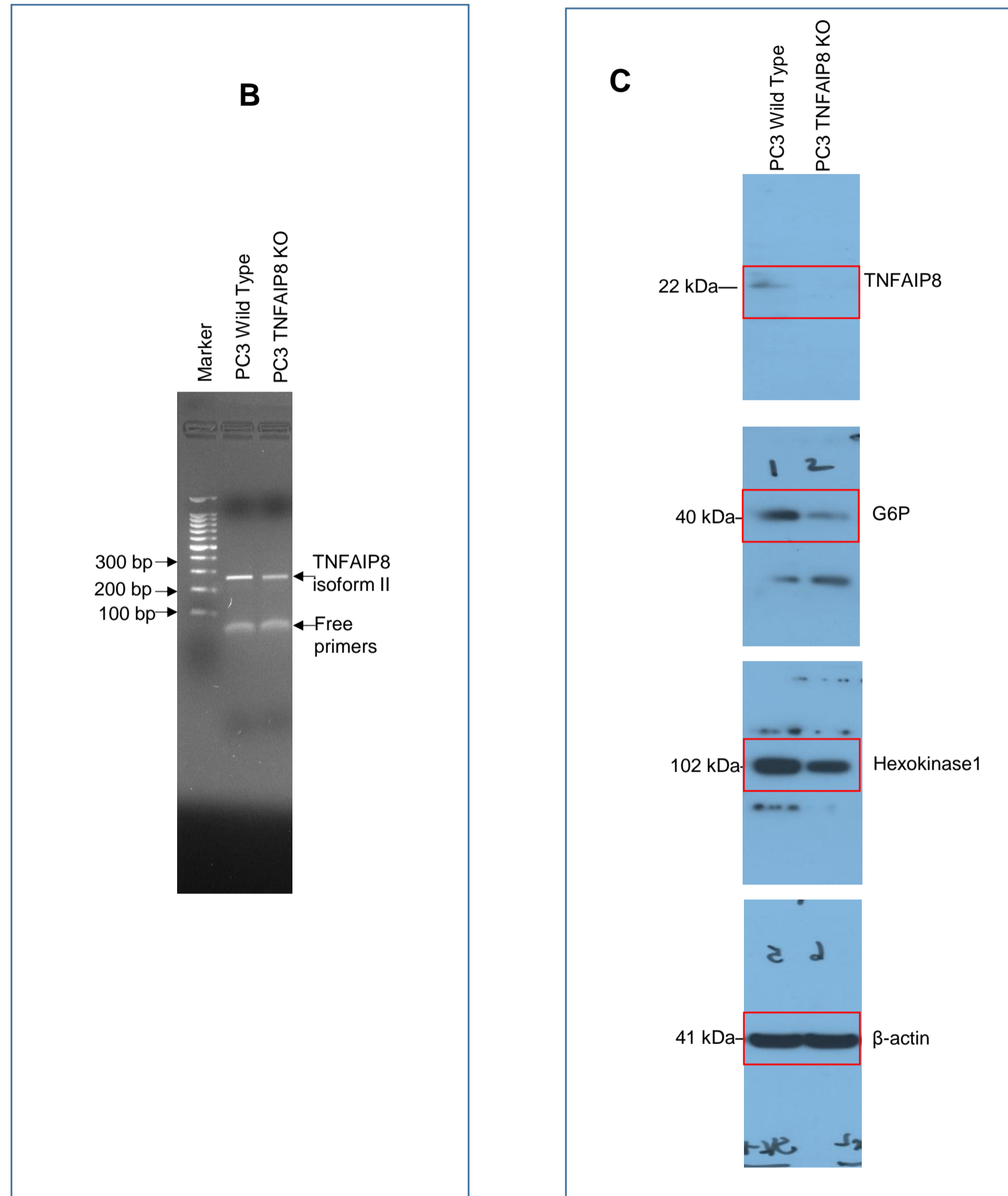
Full length images of blots for Fig. S3B in the supplementary figures. The red rectangles indicate the regions used in the figures. PVDF membranes were used for probing with the respective primary antibody.





Full length images of blots for Fig. S7A & B in the supplementary figures. The red rectangles indicate the regions used in the figures. PVDF membranes were used for probing with the respective primary antibody.

Fig.S8



Full length images of gel and blots for Fig. S8B & C in the supplementary figures. The red rectangles indicate the regions used in the figures. PVDF membranes were used for probing with the respective primary antibody.