

SUPPLEMENTARY INFORMATION

Lymphoangiocrine signals promote cardiac growth and repair

Xiaolei Liu¹, Ester De la Cruz², Xiaowu Gu³, Laszlo Balint^{4,5}, Michael Oxendine-Burns¹, Tamara Terrones⁶, Wanshu Ma¹, Hui-Hsuan Kuo⁷, Connor Lantz⁸, Trisha Bansal¹, Edward Thorp⁸, Paul Burrige⁷, Zoltán Jakus^{4,5}, Joachim Herz^{6,9}, Ondine Cleaver³, Miguel Torres² and Guillermo Oliver^{1*}

¹Center for Vascular and Developmental Biology, Feinberg Cardiovascular and Renal Research Institute, Feinberg School of Medicine, Northwestern University, Chicago, IL 60611, USA.

²Cardiovascular Development Program, Centro Nacional de Investigaciones Cardiovasculares, CNIC, Madrid 28029, Spain.

³Department of Molecular Biology, University of Texas Southwestern Medical Center, Dallas, TX 75390, USA.

⁴Department of Physiology, Semmelweis University School of Medicine, Tuzolto utca 37-47, 1094 Budapest, Hungary.

⁵MTA-SE "Lendulet" Lymphatic Physiology Research Group of the Hungarian Academy of Sciences and the Semmelweis University, Department of Physiology, Semmelweis University School of Medicine, Tuzolto utca 37-47, 1094 Budapest, Hungary.

⁶Department of Molecular Genetics, University of Texas Southwestern Medical Center, Dallas, TX 75390, USA.

⁷Department of Pharmacology, Feinberg School of Medicine, Northwestern University, Chicago, IL 60611, USA.

⁸Department of Pathology, Feinberg Cardiovascular and Renal Research Institute, Feinberg School of Medicine, Northwestern University, Chicago, IL 60611, USA.

⁹Departments of Neuroscience and Neurology and Neurotherapeutics, University of Texas Southwestern Medical Center, Dallas, TX 75390, USA.

***Corresponding author: Guillermo Oliver, Ph.D.**, Center for Vascular and Developmental Biology, Feinberg Cardiovascular and Renal Research Institute, Feinberg School of Medicine, Northwestern University, 303 East Superior Street, Simpson-Querry Biomedical Research Center 8-519, Chicago, 60611, IL. Phone: (001) 312.503.1651. Email: guillermo.oliver@northwestern.edu

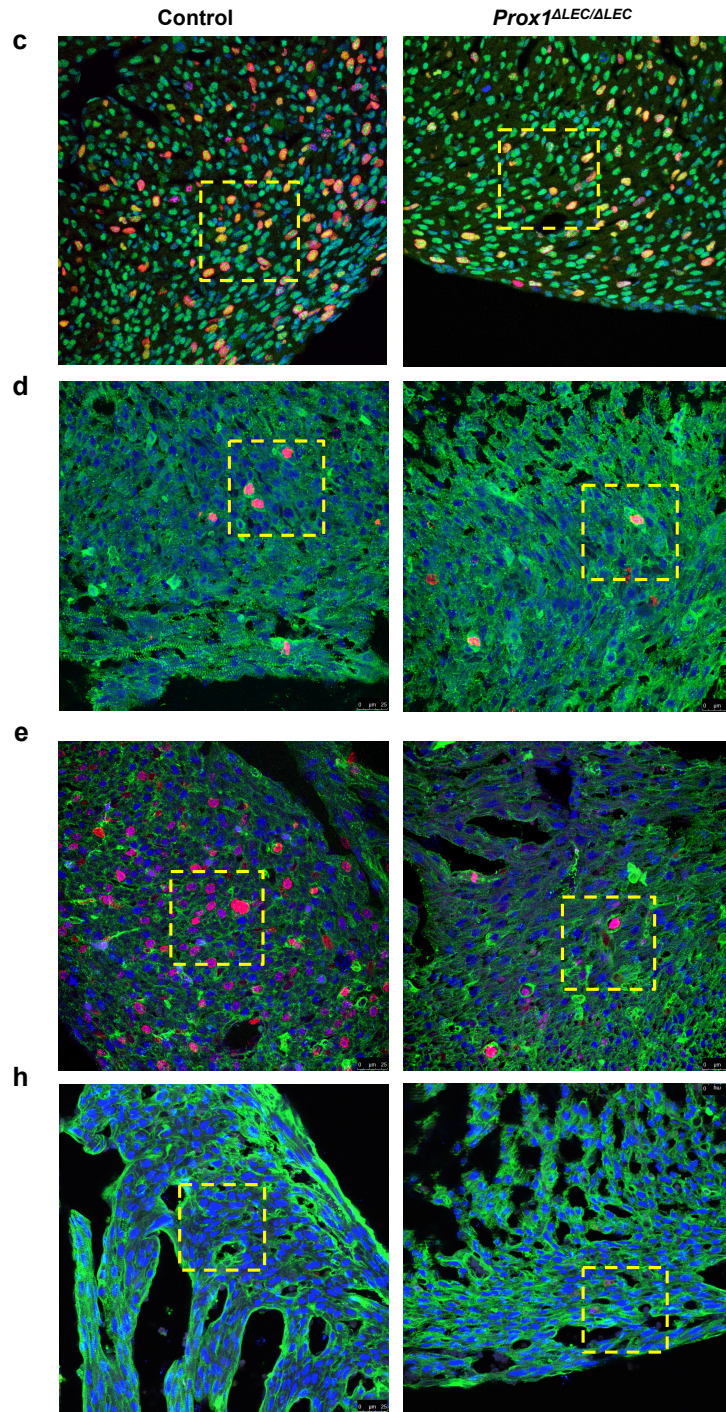
Supplementary Information

Supplementary Figures 1-5 show lower magnification images for CM proliferation and apoptosis.

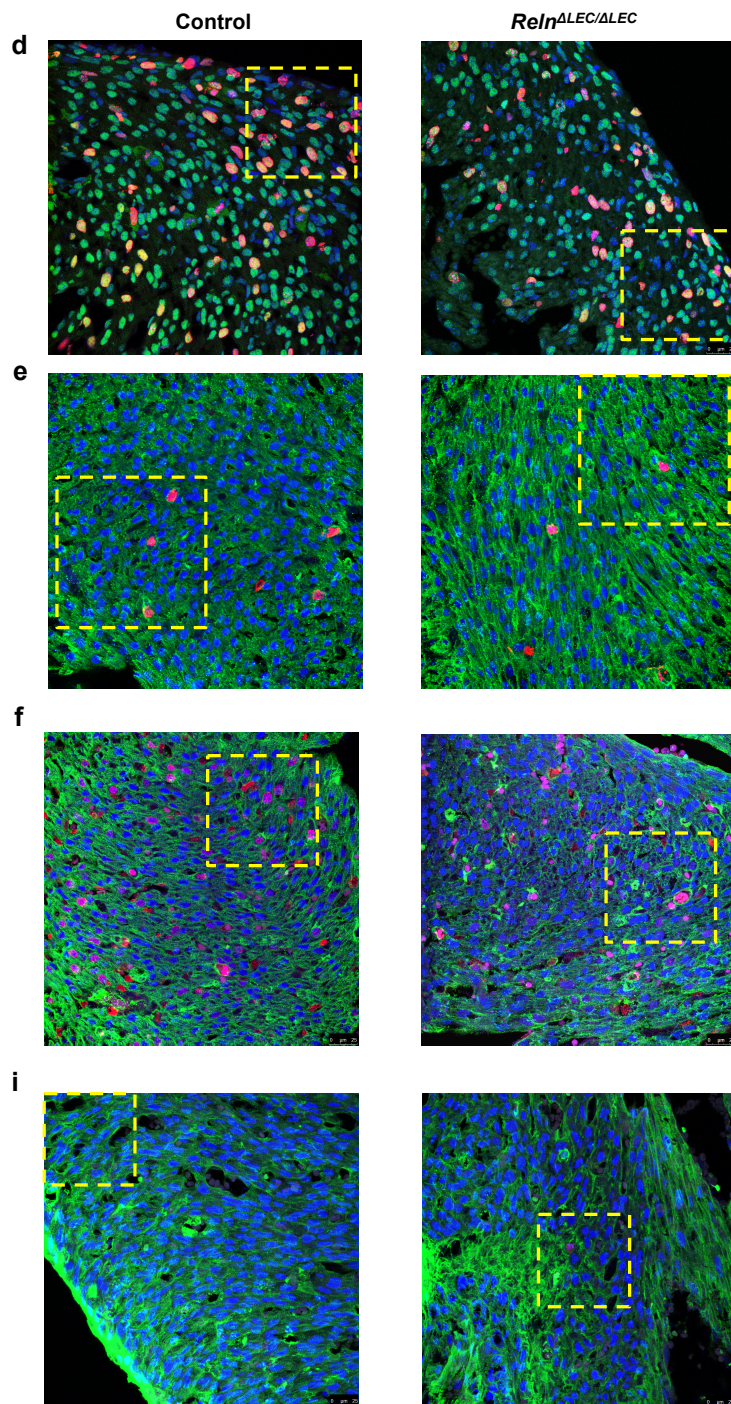
Supplementary Figures 6-9 show source data for Western blots.

Supplementary Figure 10 shows gating strategy for flow cytometry.

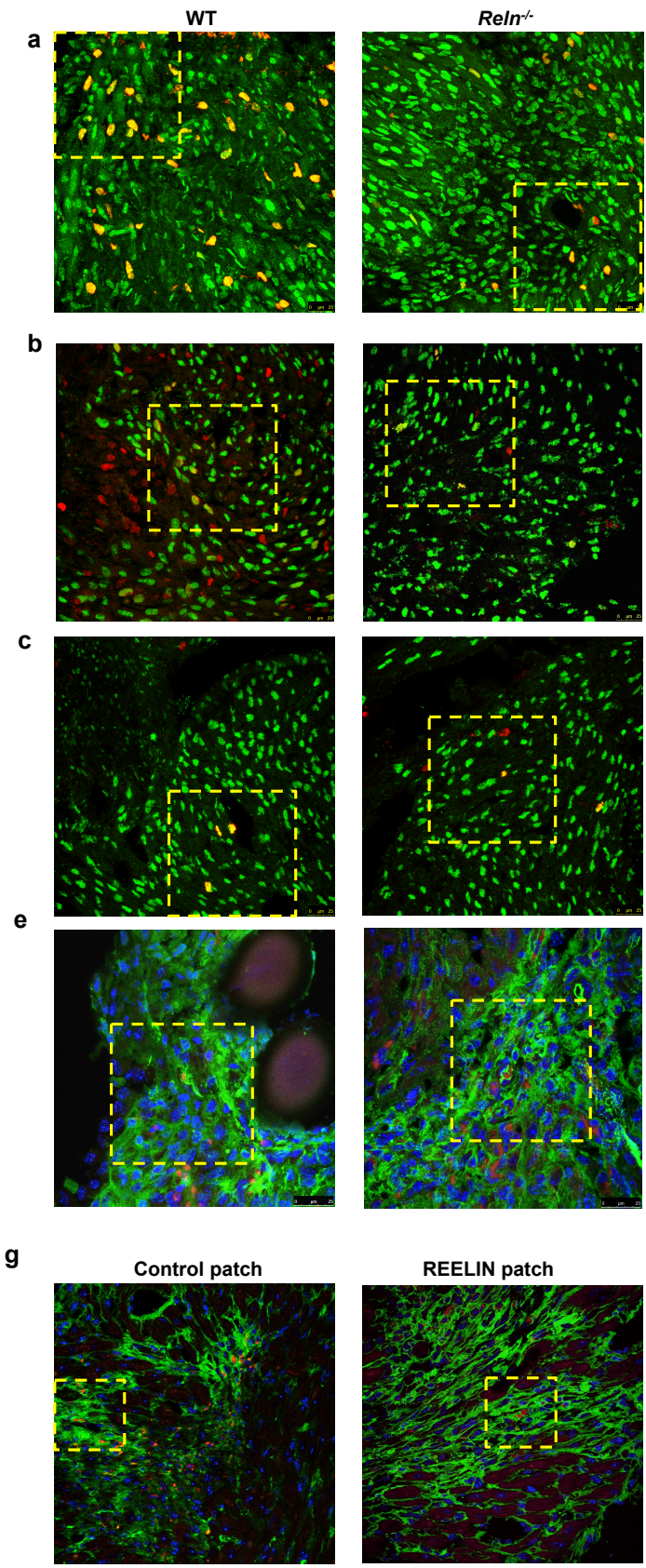
Supplementary Figure 1



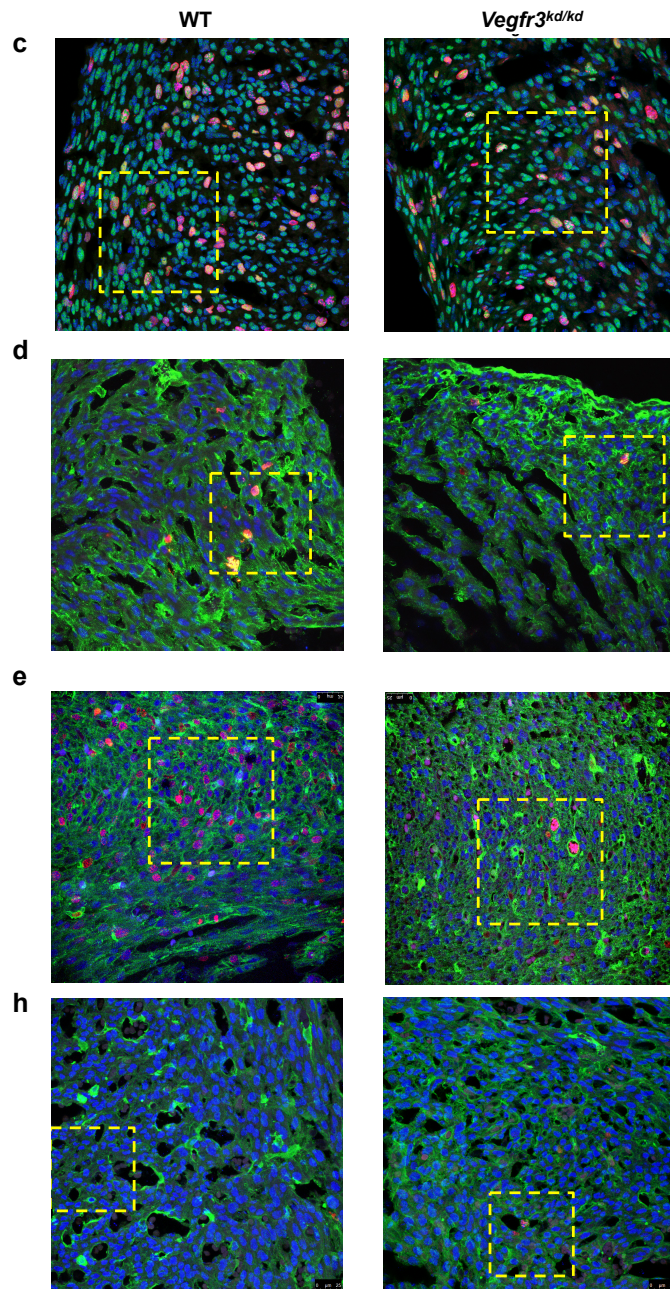
Supplementary Figure 2



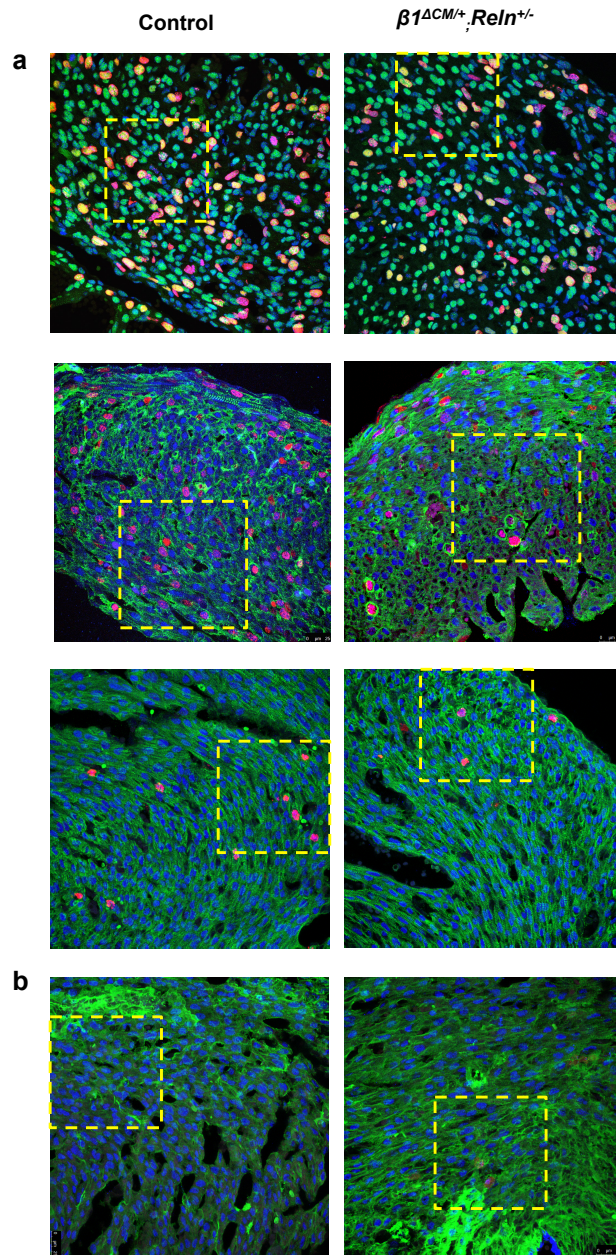
Supplementary Figure 3



Supplementary Figure 4

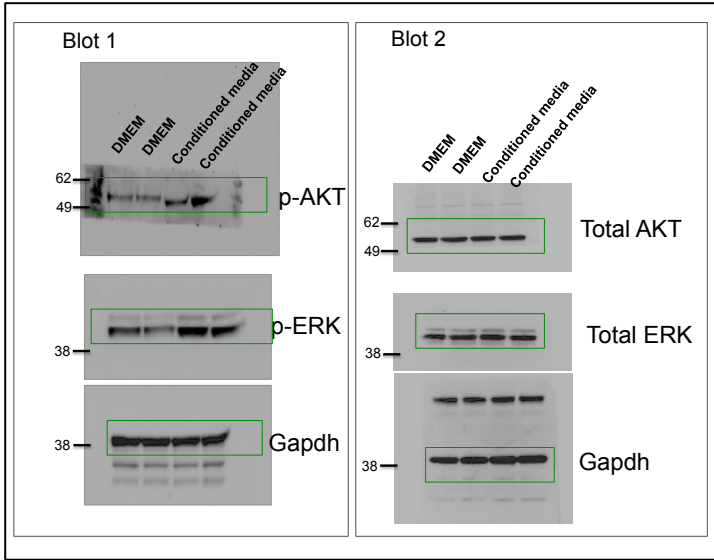


Supplementary Figure 5

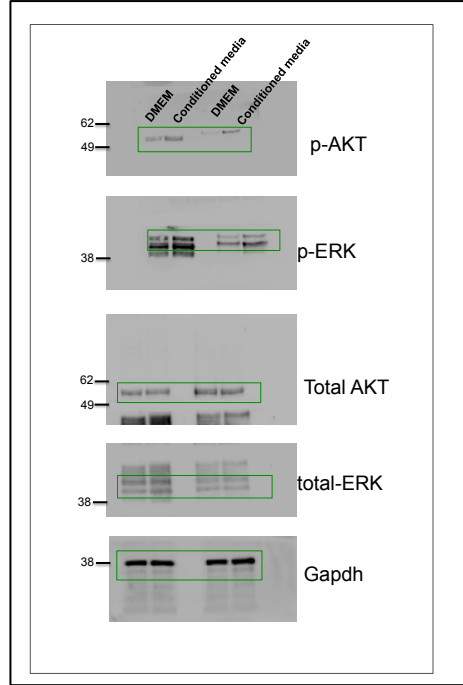


Supplementary Figure 6

a

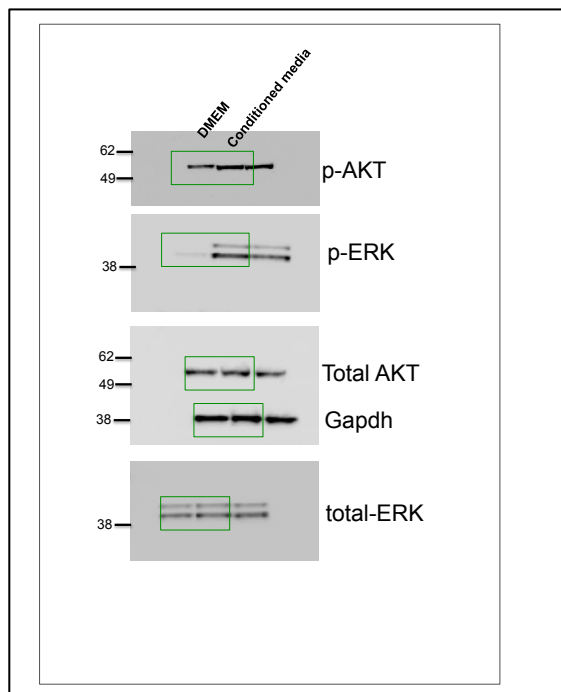


b

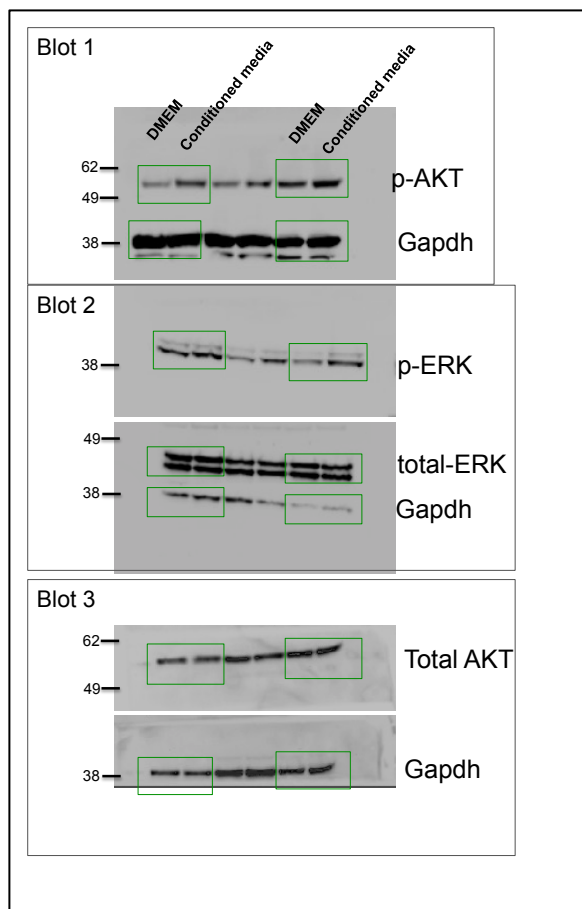


Supplementary Figure 7

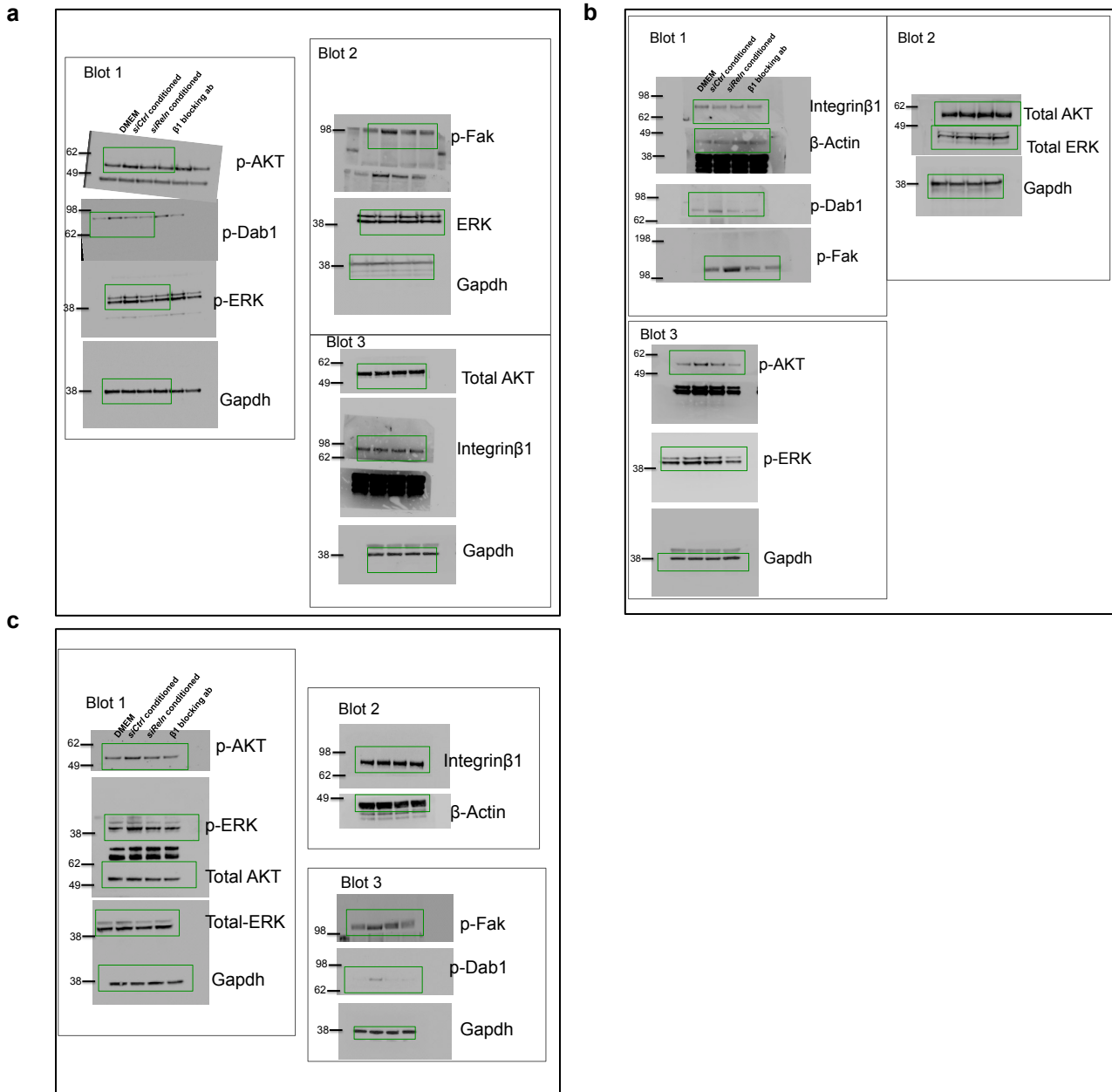
a



b

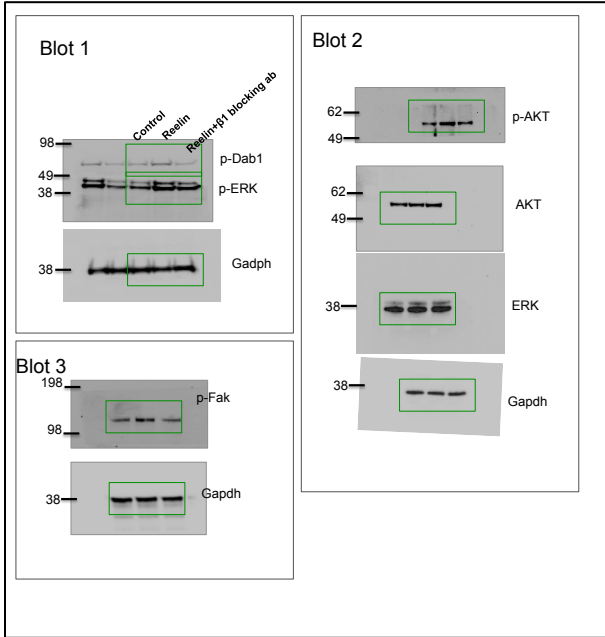


Supplementary Figure 8

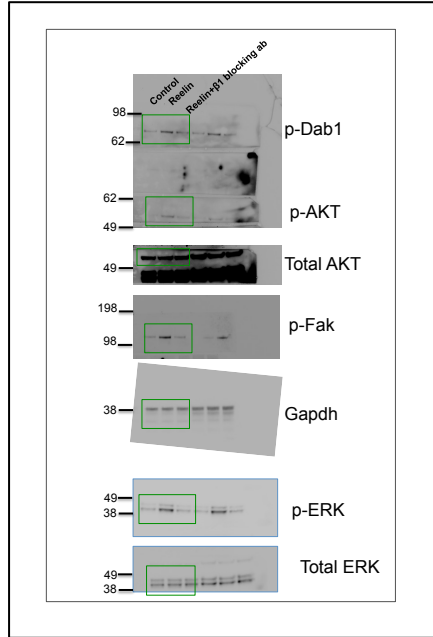


Supplementary Figure 9

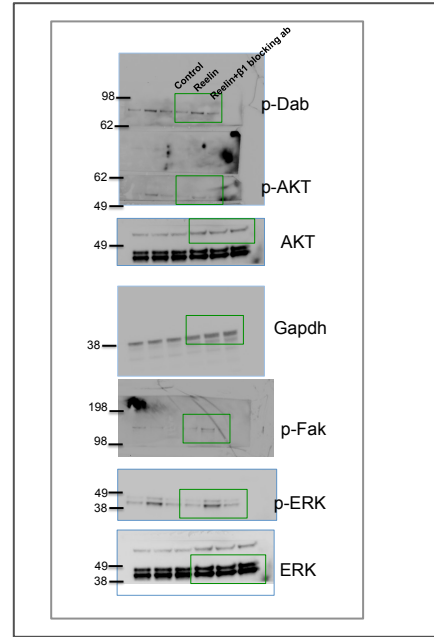
a



b



c



Supplementary Figure 10

