

Supplementary Material

Genome-wide Identification, Evolution and Expression Analysis of Basic Helix-loop-helix (bHLH) Gene Family in Barley (*Hordeum vulgare L.*)

Qinglin Ke^{1,#}, Wenjing Tao^{1,#}, Tingting Li¹, Wenqiu Pan², Xiaoyun Chen¹, Xiaoyu Wu¹, Xiaojun Nie² and Licao Cui^{1,2,*}

¹College of Bioscience and Engineering, Jiangxi Agricultural University, Nanchang 330045, Jiangxi, China; ²State Key Laboratory of Crop Stress Biology in Arid Areas and College of Agronomy, Northwest A&F University, Yangling 712100, Shaanxi, China

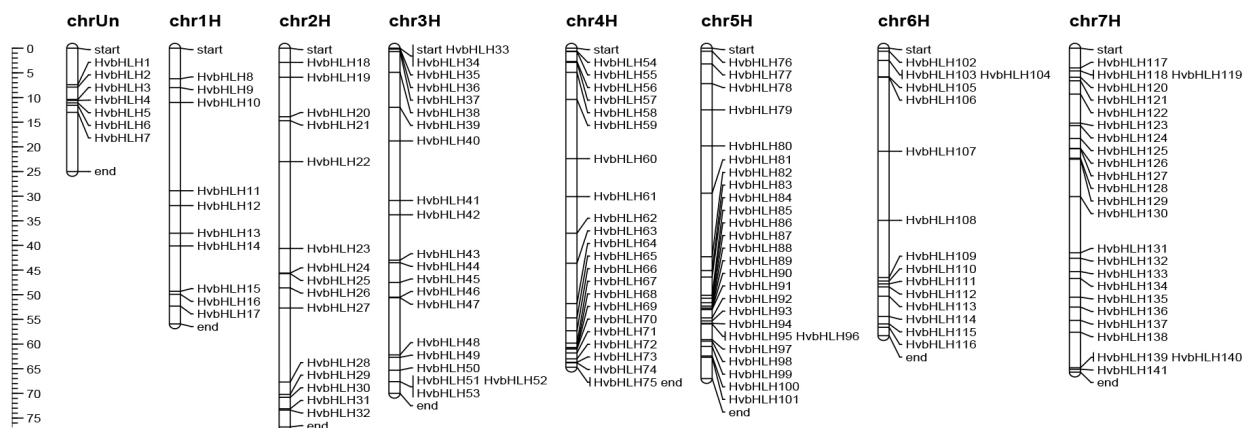


Fig. S1. Chromosomal localizations of *HvbHLHs*.

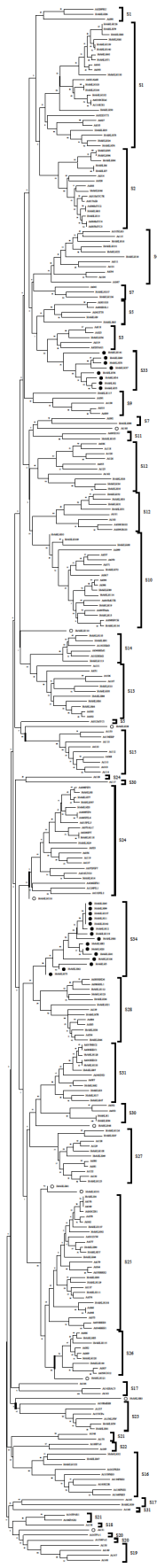


Fig. S2. Phylogenetic tree of bHLHs in barley and *Arabidopsis*.

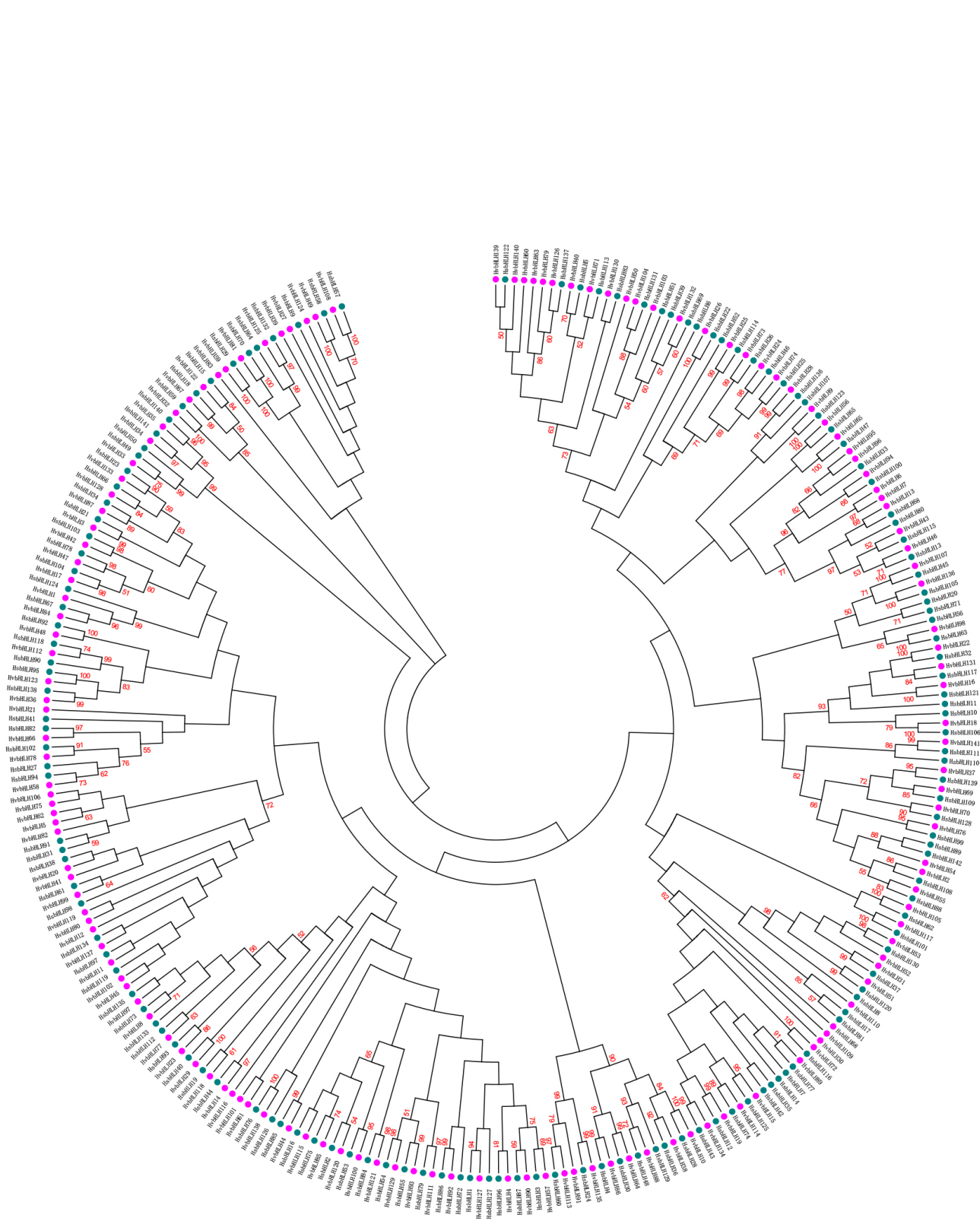


Fig. S3. Phylogenetic of bHLHs in wild and cultivated barley.

