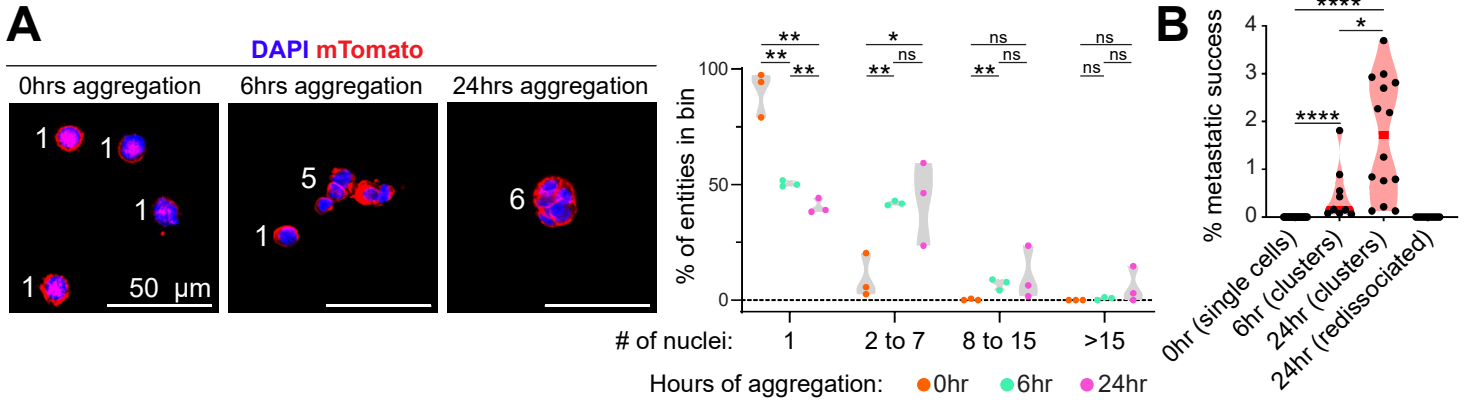


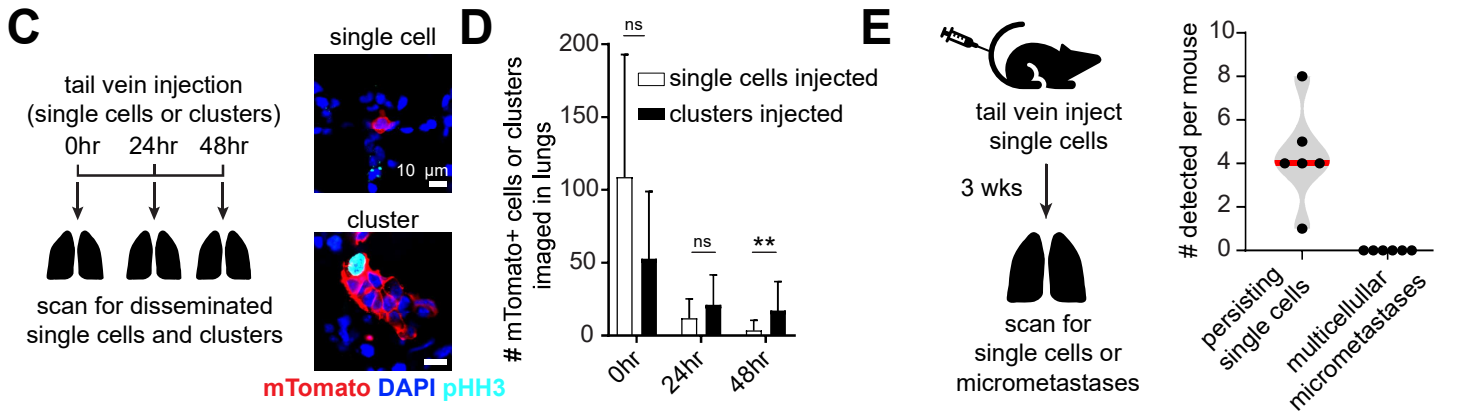
Changing size distribution of PyMT tumor cell aggregates in suspension culture

Metastatic success rates

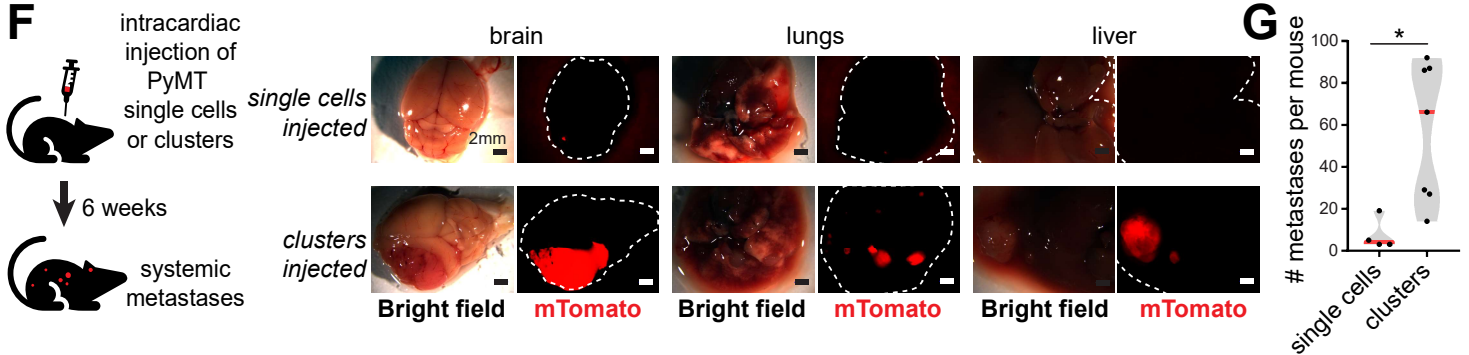


Clusters persist in the lung while single cells are rapidly cleared

Single cells do not form micrometastases in the lung



Metastases formed by intracardiac injection of single cells or clusters



Number and size of Ctrl-kd and Epgn-kd tail vein metastases

GFP expression loss in Epgn-kd lung metastases

