

## Supplement

To qualitatively assess apoptotic cells in the vessel wall via TUNEL staining, the In-situ Apoptosis Detection Kit (DAB) (Abcam, Cambridge, MA) was used in accordance with the manufacturer's directions. A Nikon E600 microscope (Nikon Instruments, Melville, NY) with CCD camera and QCapture imaging software (QImaging, Surrey, BC) was collected digital images of stained slides.

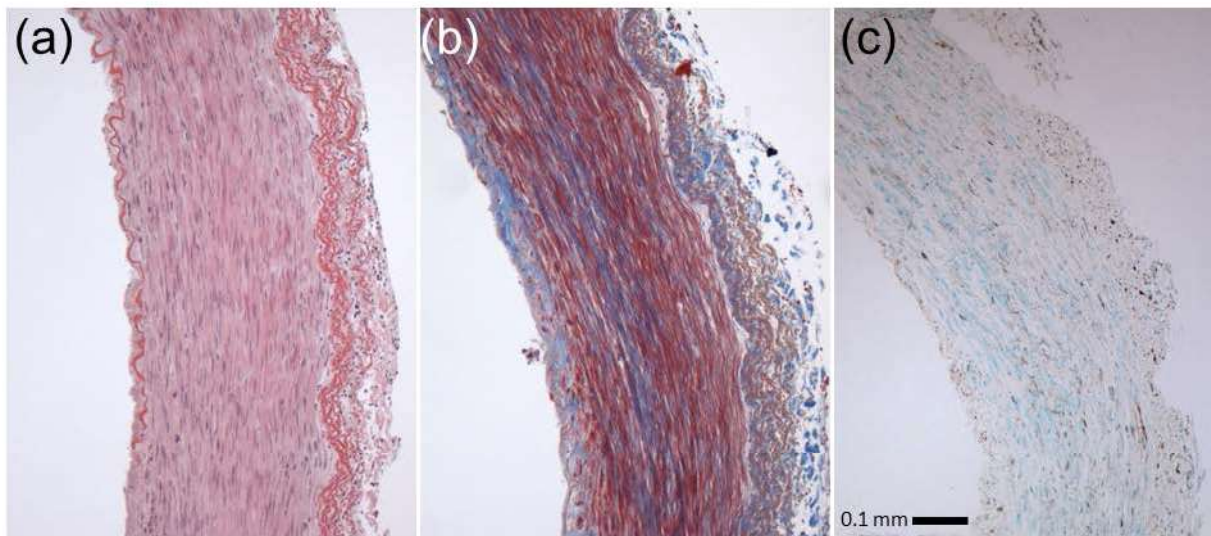


Figure S1. Representative example of (a) hematoxylin and eosin, (b), Masson's trichrome, and (c) TUNEL apoptosis assay with DAB conjugation and methyl green counterstain. Image shown for GSV after 21 day venous-to-arterial transitional culture (*Arterial*).