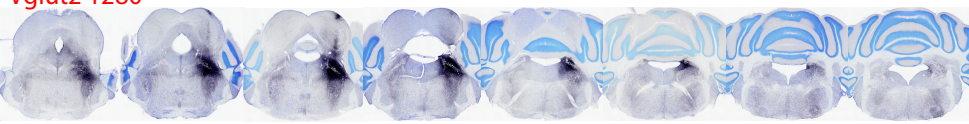


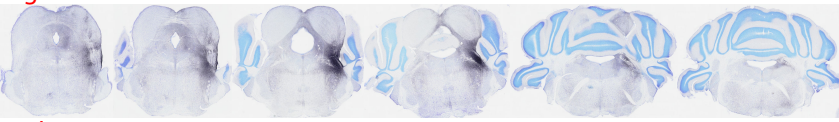
## Supplemental Figure Legend

**Supplemental Figure.** Full distribution of Syp-mCherry somatic labeling at all rostro-caudal levels through every injection site. Black nickel-diaminobenzidine (NiDAB) labeling represents immunolabeling for dsRed (Syp-mCherry in somata, dendrites, and axons) with thionin (Nissl) cytoarchitectural counterstaining.

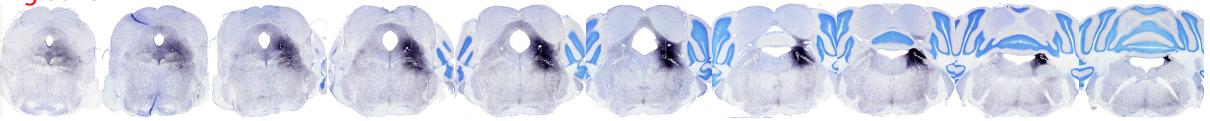
Vglut2 1280



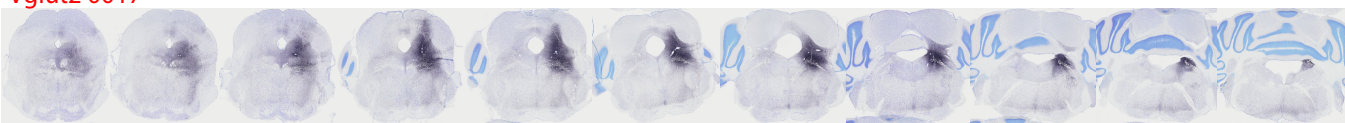
Vglut2 1281



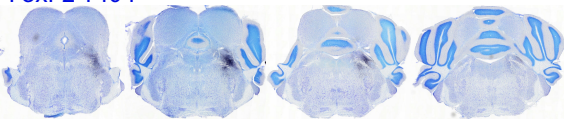
Vglut2 0147



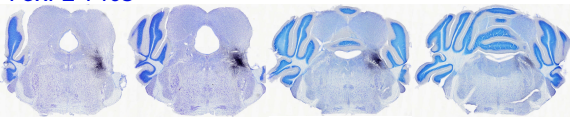
Vglut2 0017



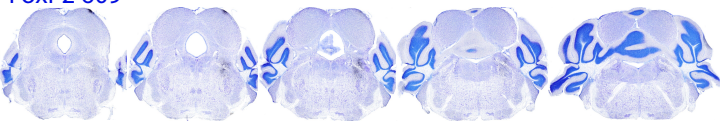
FoxP2 1404



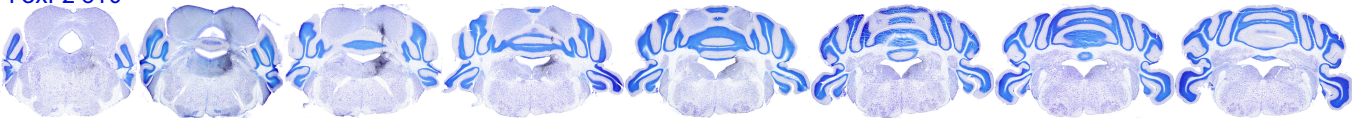
FoxP2 1405



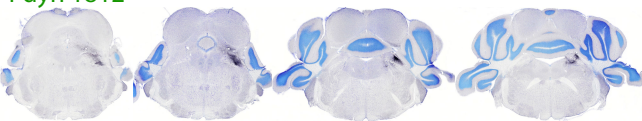
FoxP2 609



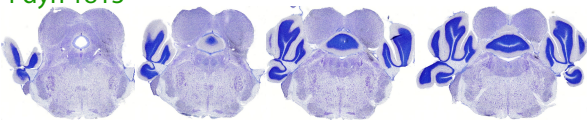
FoxP2 610



Pdyn 1812



Pdyn 1813



Pdyn 1814

