

Figure S2

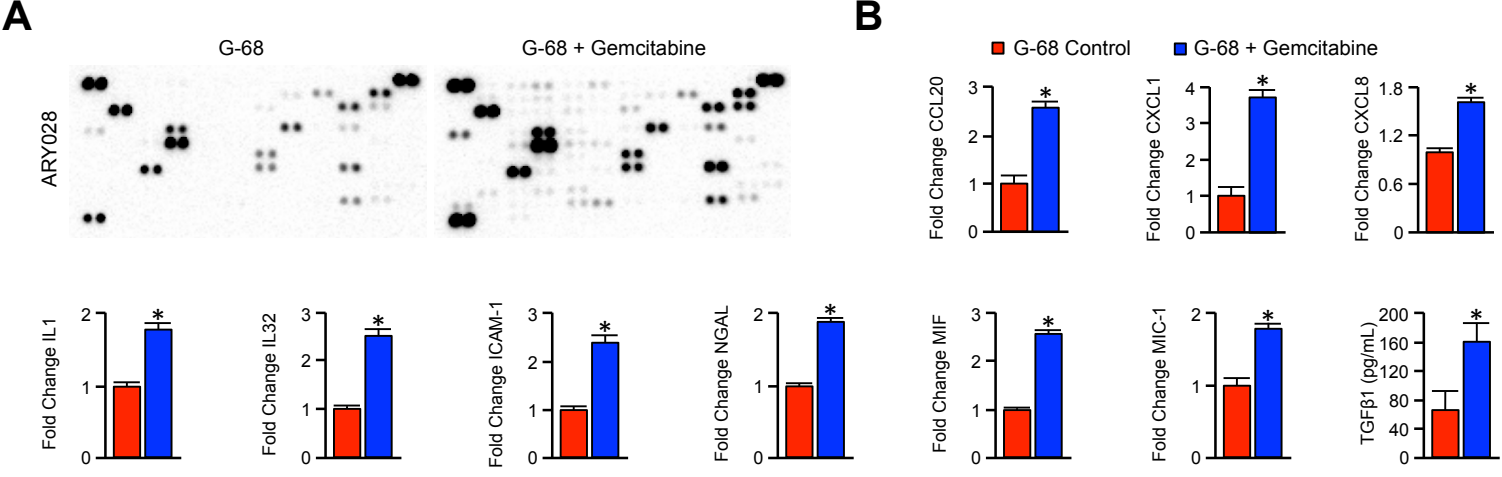


Figure S2. Gemcitabine alters antigen presentation and tumor-derived cytokine production in primary human tumor cells *in vitro*
(A) G-68 primary human PDAC cells were incubated with 2μM Gemcitabine for 24 hours, after which cells were incubated with a protein transport inhibitor for one hour, lysed, and 200μg of total cell lysate was evaluated by a high throughput proteome profiler array (ARY022B). **(B)** Pixel density was evaluated using ImageJ, and samples normalized to the mean intensity of the reference spots for each blot minus the background density. Composite normalized values for all experimental groups were divided by those for untreated G-68 cells, and are presented as fold change plus standard deviation. Media was also collected at this time and subjected to TGFβ1 ELISA (N=4, *p < 0.05).