

**Proof-of-concept study of the NOTI chelating platform:
Preclinical evaluation of ⁶⁴Cu-labeled mono- and trimeric
c(RGDfK) conjugates**

SUPPORTING INFORMATION

Sebastian Martin^{1,3}, Stephan Maus¹, Tobias Stemler¹, Florian Rosar¹, Fadi Khreish¹, Jason P.
Holland⁴, Samer Ezziddin¹, and Mark D. Bartholomä^{1,2*}

¹ Department of Nuclear Medicine, Saarland University – Medical Center, Kirrbergerstrasse,
D-66421, Homburg, Germany

² Department of Nuclear Medicine, University of Freiburg – Medical Center, Hugstetterstrasse
55, D-79106, Freiburg, Germany

³ Department of Nuclear Medicine and Molecular Imaging, Lausanne University Hospital, Rue
de Bugnon 25A, CH-1011 Lausanne, Switzerland

⁴ Department of Chemistry, University of Zurich, Winterthurerstrasse 190, CH-8057, Zurich,
Switzerland

*** Corresponding Author:**

Dr. Mark D. Bartholomä

Tel: +49-(6841)-16-24664

Fax: +49-(6841)-16-24692

E-mail: mark.bartholomae@uks.eu

Characterization data compound 4

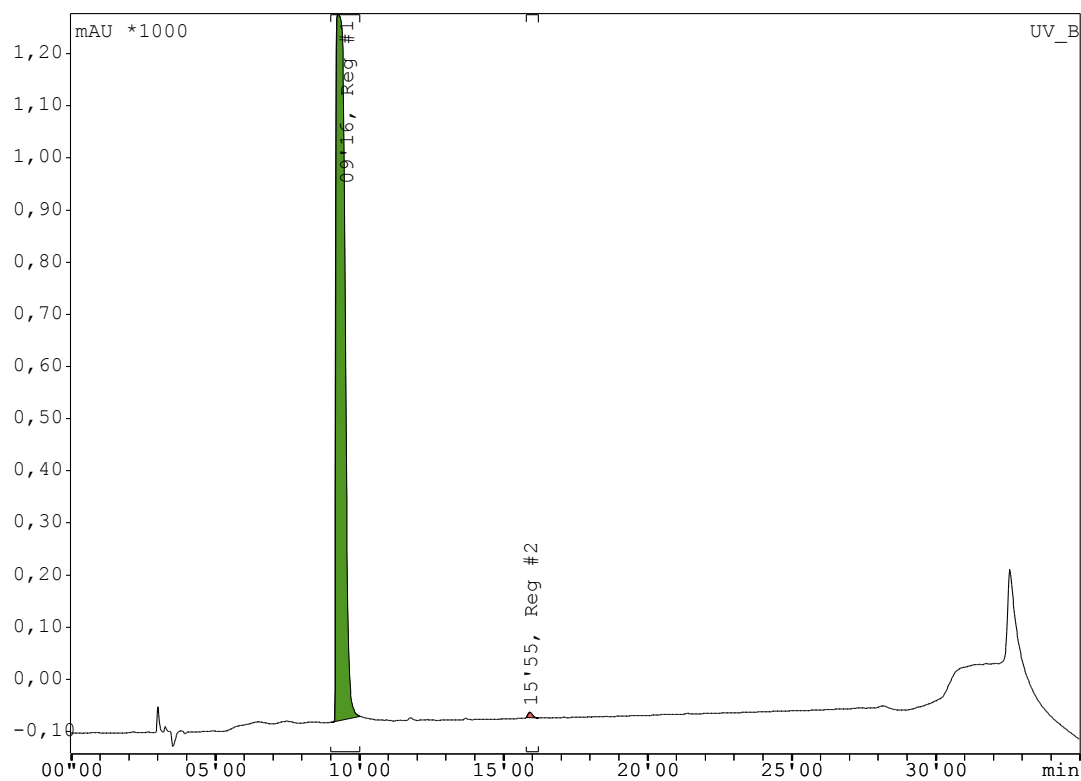


Figure S1. Representative analytical HPLC chromatogram of 4 (UV/vis trace).

D:\data_2018\klind32s_hr03

2/15/2018 2:54:48 PM

klind32s

klind32s_hr03 #1 RT: 0.00 AV: 1 NL: 6.14E7
T: FTMS + p ESI Full lock ms [50.00-700.00]

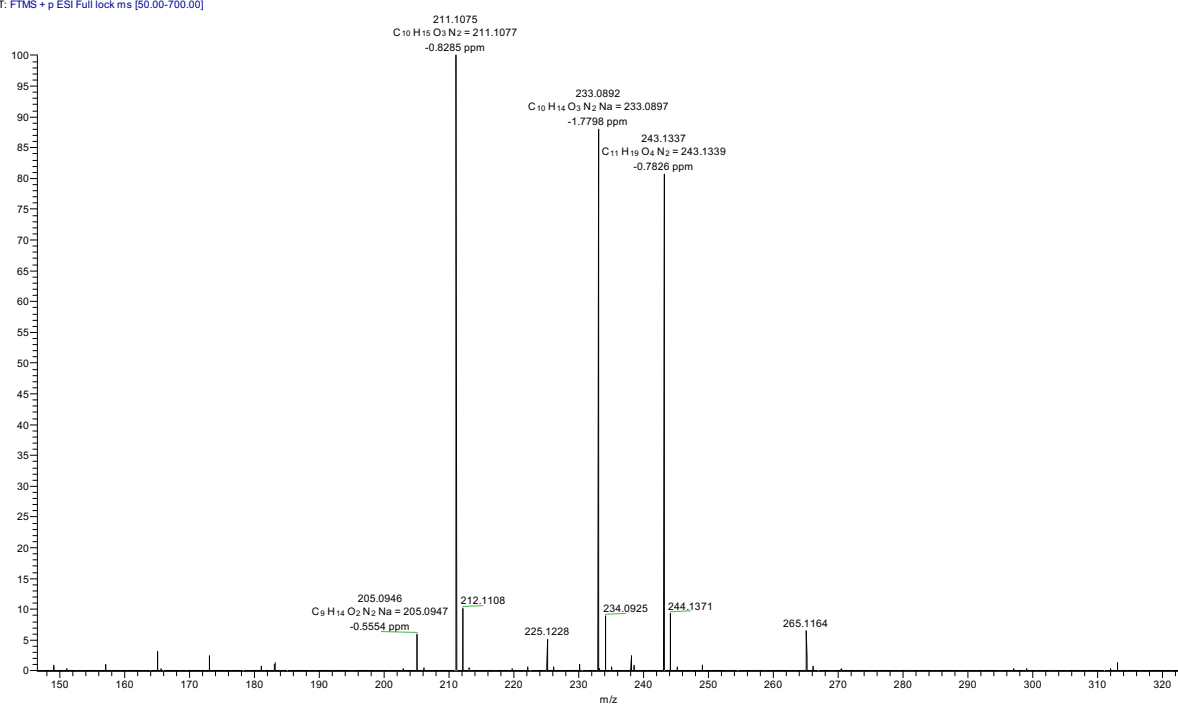


Figure S2. HR-ESI(+) spectrum of 4.

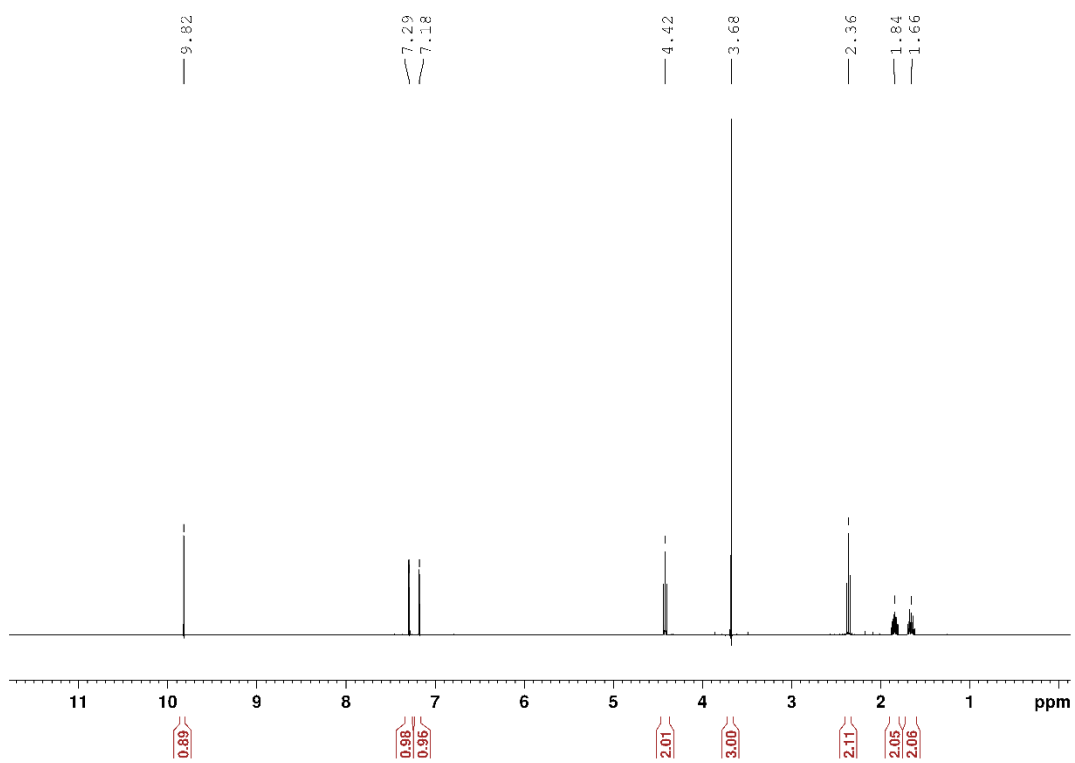


Figure S3. Proton NMR of 4.

Characterization data compound 5

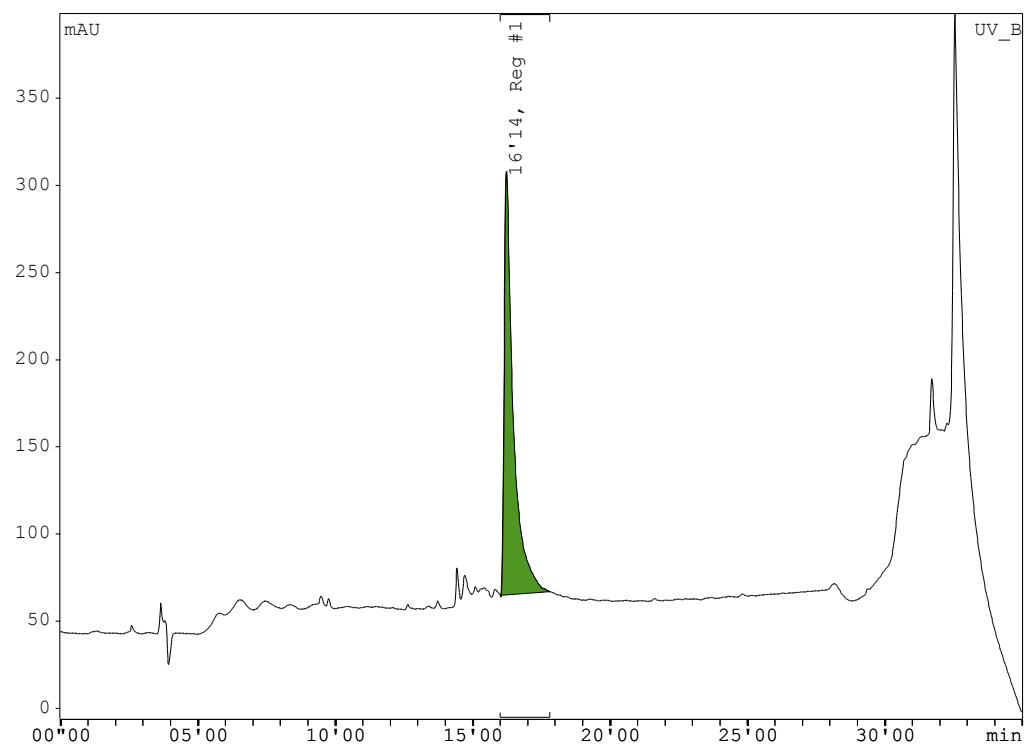


Figure S4. Representative analytical HPLC chromatogram of **5** (UV/vis trace).

D:\data_2018\klind23s_hr04

1/29/2018 10:26:51 AM

www.na.easter

klind23s_hr04 #1 RT: 0.00 AV: 1 NL: 8.20E7
T: FTMS + p ESI Full ms [100.00-2000.00]

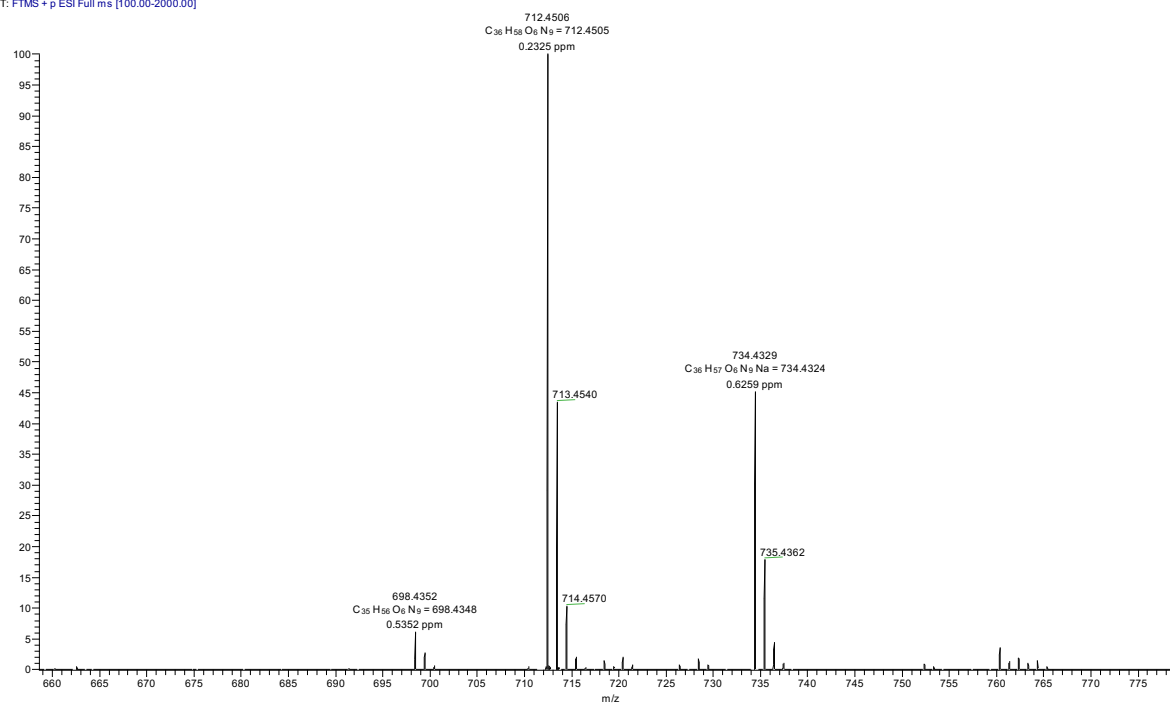


Figure S5. HR-ESI(+) spectrum of **5**.

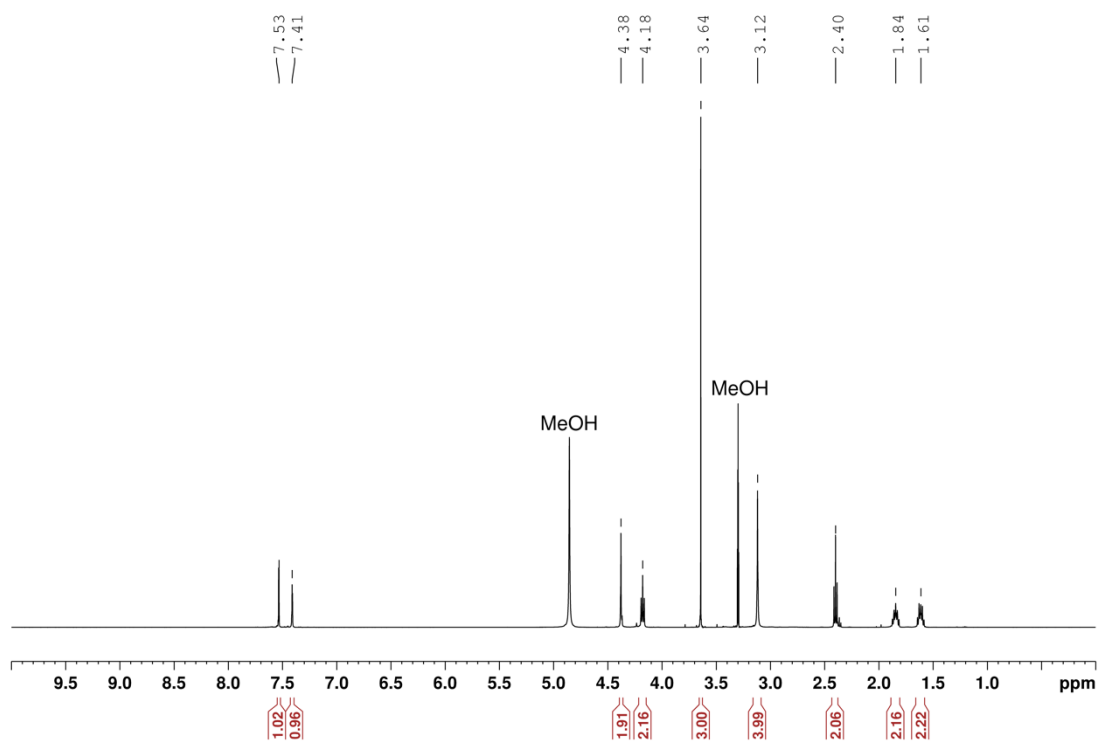


Figure S6. Proton NMR of **5**.

Characterization data compound 6

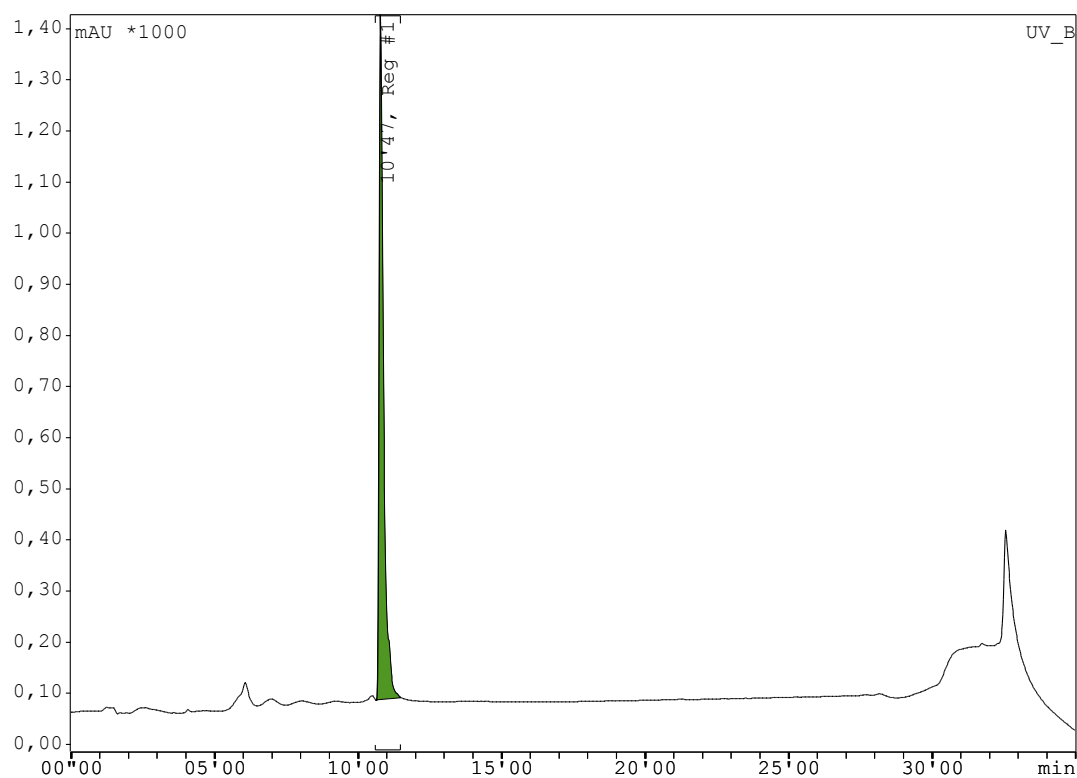


Figure S7. Representative analytical HPLC chromatogram of **6** (UV/vis trace).

D:\data_2018\klind24s_hr06

1/29/2018 10:36:36 AM

1102.NA

klind24s_hr06 #1 RT: 0.00 AV: 1 NL: 1.84E6
T: FTMS - p ESI sid=39.00 Full lock ms [100.00-1400.00]

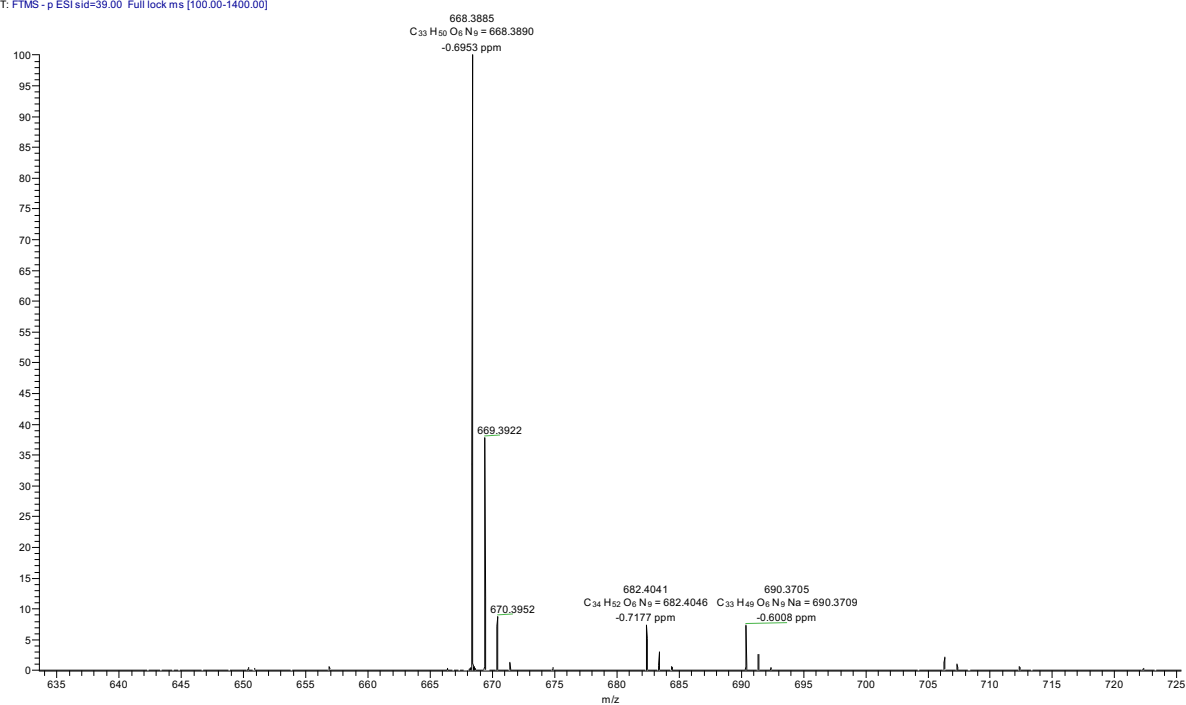


Figure S8. HR-ESI(+) spectrum of **6**.

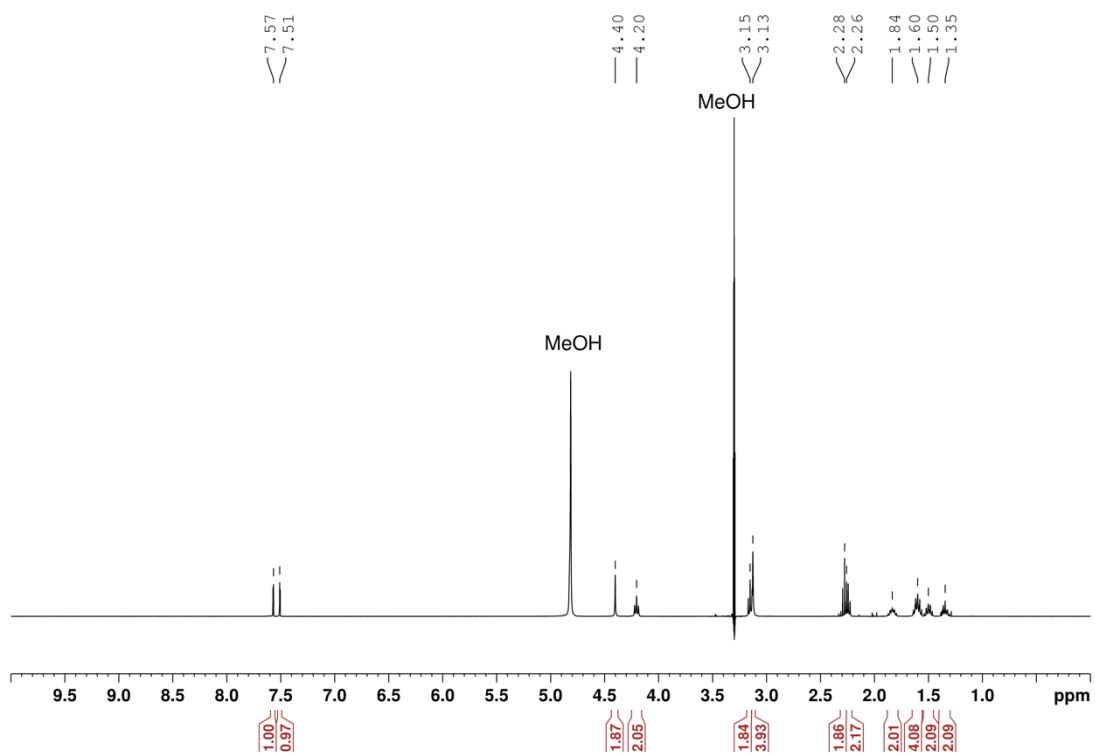


Figure S9. Proton NMR of **6**.

Characterization data of Cu-8/[⁶⁴Cu]Cu-8

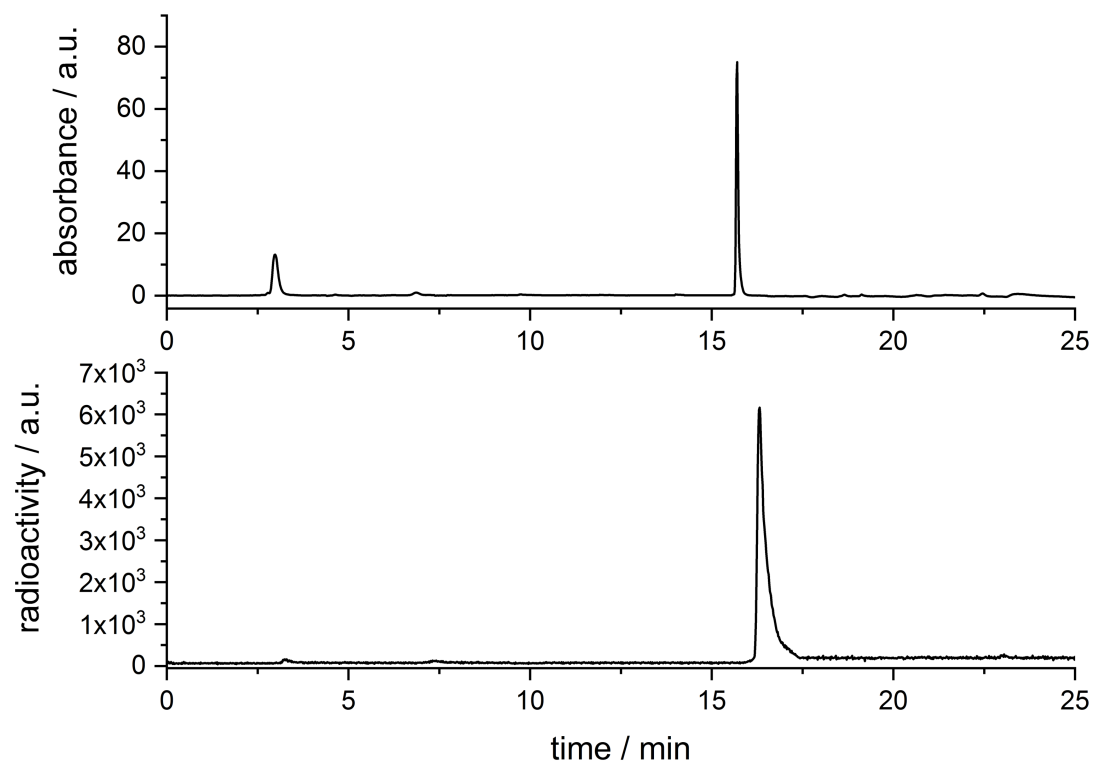


Figure S10. Representative analytical HPLC chromatograms of Cu-8 (UV/vis; top) and [⁶⁴Cu]Cu-8 (radioactivity; bottom).

Characterization data of Cu-9/[⁶⁴Cu]Cu-9

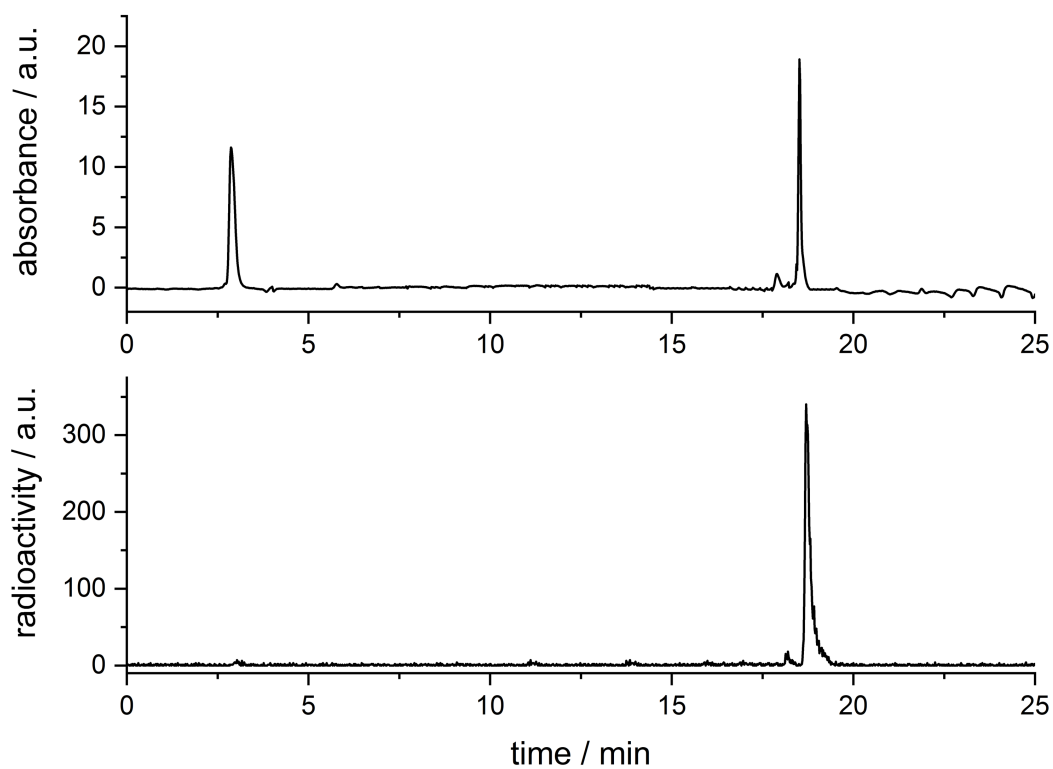


Figure S11. Representative analytical HPLC chromatograms of Cu-9 (UV/vis; top) and [⁶⁴Cu]Cu-9 (radioactivity; bottom).

Table S1. *Ex vivo* biodistribution of [⁶⁴Cu]Cu-8 and [⁶⁴Cu]Cu-9 in mice bearing α_vβ₃-positive U-87MG tumors at 1 h p.i. along with blocking studies. Data are expressed as %IA g⁻¹ and represent mean ± SD (*n* = 3).

Organ	[⁶⁴ Cu]Cu-8			[⁶⁴ Cu]Cu-9		
	1 h	1 h blockade	<i>P</i> value*	1 h	1 h blockade	<i>P</i> value*
Blood	0.16 ± 0.05	0.05 ± 0.02	0.0199	0.34 ± 0.05	0.27 ± 0.09	0.3042
Heart	0.30 ± 0.02	0.06 ± 0.01	0.0001	1.03 ± 0.13	0.52 ± 0.07	0.0037
Lung	0.50 ± 0.34	0.14 ± 0.13	0.1653	2.81 ± 0.53	1.52 ± 0.23	0.0186
Spleen	0.72 ± 0.15	0.16 ± 0.01	0.0026	1.92 ± 0.24	0.65 ± 0.21	0.0011
Liver	2.75 ± 0.05	1.79 ± 0.26	0.0034	5.63 ± 1.61	3.32 ± 0.09	0.0675
Pancreas	0.30 ± 0.20	0.04 ± 0.01	0.0931	0.94 ± 0.37	0.46 ± 0.13	0.1038
Stomach	1.41 ± 0.43	0.13 ± 0.07	0.0068	1.66 ± 1.23	0.66 ± 0.37	0.2493
Intestine	0.73 ± 0.20	0.21 ± 0.05	0.0125	2.11 ± 1.15	1.73 ± 0.65	0.6462
Kidney	2.67 ± 0.33	1.59 ± 0.15	0.0070	7.65 ± 0.52	5.45 ± 0.59	0.0084
Muscle	0.28 ± 0.20	0.03 ± 0.01	0.0923	0.41 ± 0.06	0.29 ± 0.27	0.5046
Bone	0.35 ± 0.08	0.09 ± 0.03	0.0206	0.66 ± 0.23	0.38 ± 0.13	0.1289
Tumor	2.30 ± 0.28	0.26 ± 0.02	0.0002	5.57 ± 0.83	2.24 ± 0.11	0.0024
Tumor-to-blood	14.99 ± 3.05			16.22 ± 0.20		
Tumor-to-kidney	0.86 ± 0.04			0.73 ± 0.11		
Tumor-to-liver	0.83 ± 0.10			1.03 ± 0.26		
Tumor-to-muscle	10.53 ± 4.79			14.08 ± 3.83		

* statistical analysis of normal vs. blocking group using unpaired two-tailed t-test.