

Photograph log of key enrichment cultures

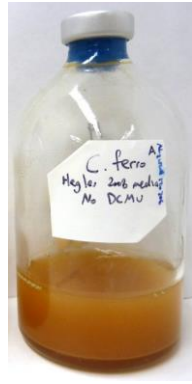
Media controls:

Left: Pfennig's medium (S2-)

Right: Freshwater medium from Hegler and colleagues, 2008 (Fe²⁺)



Reference culture of *Chl. ferrooxidans* KoFox grown on Hegler medium



L304 enrichment S-6D

Inoculated Aug. 8th, 2017

Subcultured Nov. 23rd, 2017 (~3.5 months later)

Typical growth time of ~3 weeks

Cells ~0.8-1 x 1.2-1.5 μm in size

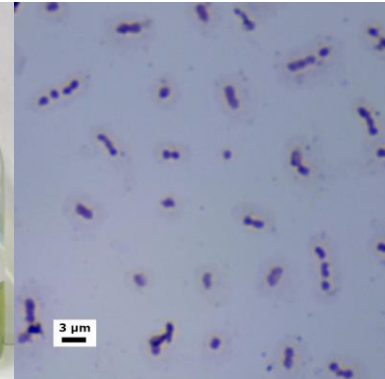
Named "Ca. *Chl. canadense* L304-6D"



Aug. 24th, 2017

Nov. 23rd, 2017

Healthy subculture



Simple stain (dry mount); bright field microscopy

L227 enrichment S-6D

Dates of initial inoculation and subculture same as above

Typical growth time of ~4-8 weeks (slower growing)

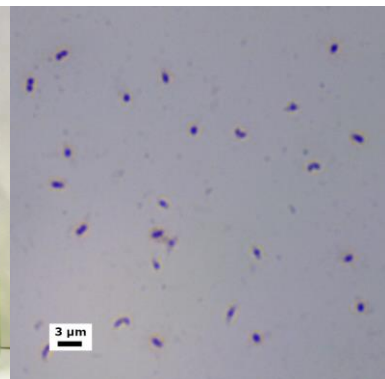
Cells ~0.7-0.9 x 1-1.5 μm in size

Strain was lost in May 2018



Nov. 23rd, 2017

Healthy subculture



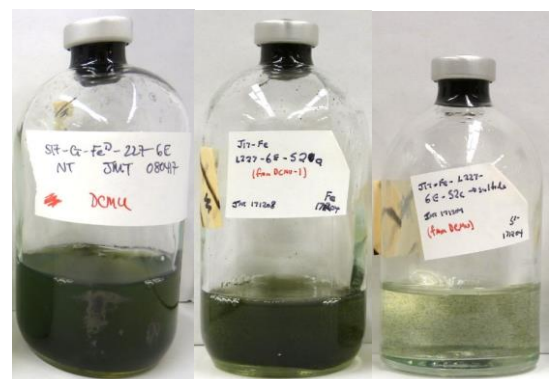
Simple stain (dry mount); bright field microscopy

L227 enrichment Fe-6E

Inoculated into Hegler medium (Fe²⁺) on Aug. 8th, 2017

Developed greenish-black colouration

Eventually transitioned to sulfide-containing medium (Pfennig's), although growth was poor; *dsrA* sequence confirmed identical to L227-S-6D above



Oct. 19th, 2017

Subculture, Hegler

Subculture, Pfennig