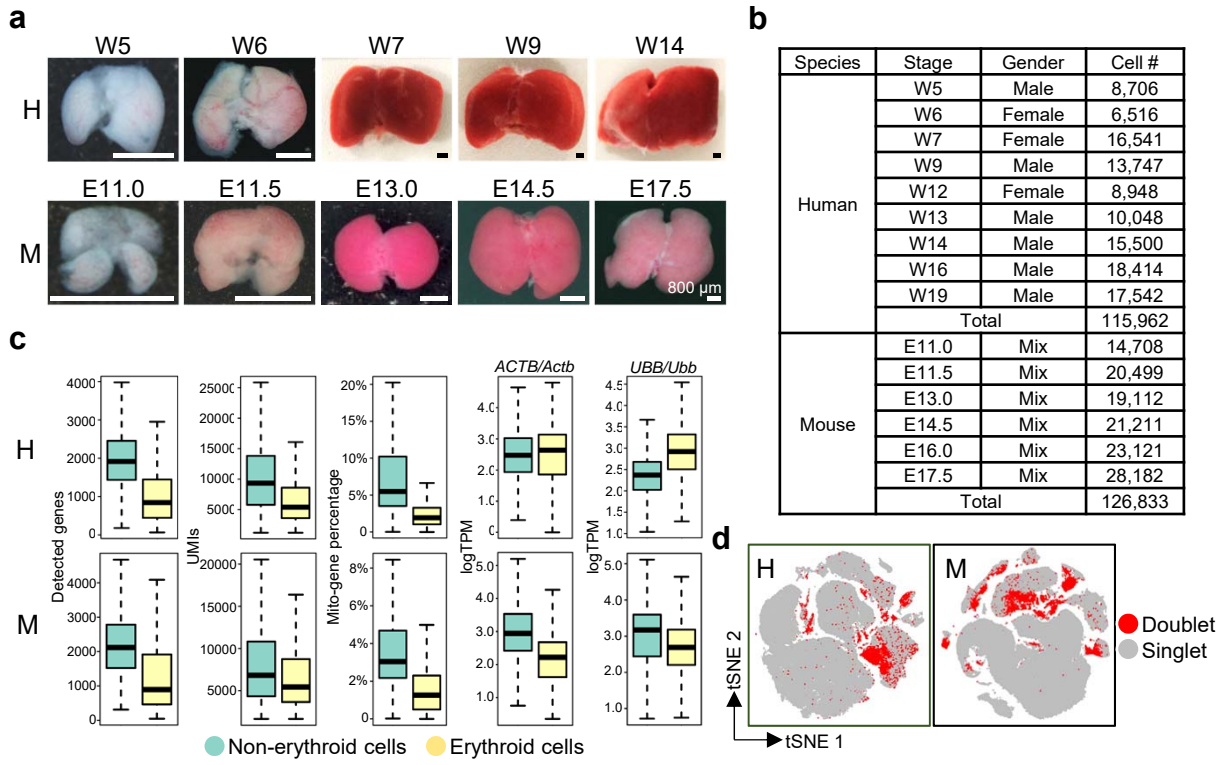


Wang/Xu Figure S1



Supplementary information, Fig. S1 Quality control for scRNA-seq of human and mouse fetal livers. a Images of human (H) and mouse (M) fetal livers. Scale bars, 800 μm . **b** The sample list, including species, stage, gender, and captured cell number. **c** Boxplots showing detected genes, UMIs, mitochondrial-gene percentage and the expression of housekeeping genes *ACTB/Actb* and *UBB/Ubb* in human (upper) and mouse (lower) non-erythroid cells and erythrocytes. **d** t-SNE plots showing doublet distribution in 10 \times Genomics data from human (H) and mouse (M) fetal livers.