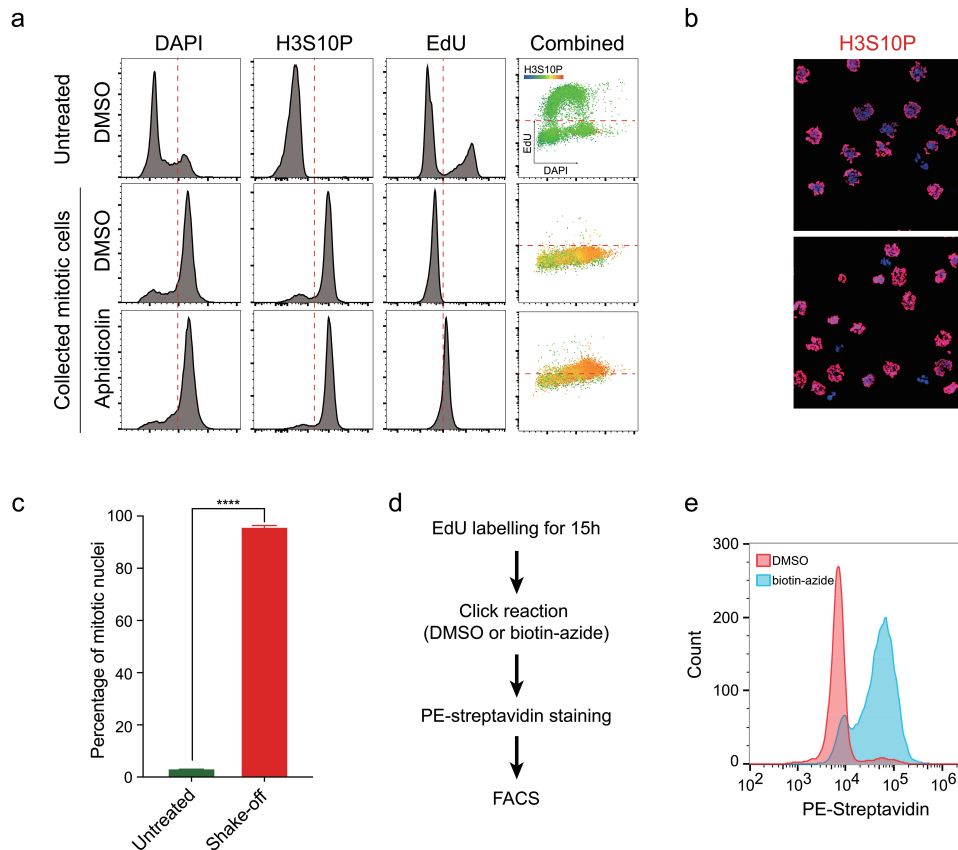


Supplementary information, Fig. S1



Supplementary information, Fig. S1

a Flow cytometry profiles of untreated cells and mitotic cells pretreated with or without 0.3 μ M Aphidicolin in S phase and collected by mitotic shake-off. **b** Representative immunofluorescence images of H3S10p staining of cells harvested by mitotic shake-off. **c** The mitotic index calculated from (b). Data are means of three independent experiments, error bars indicate S.E.M., ****, $P < 0.0001$ calculated using a Student's unpaired two-tailed t test. **d** Scheme for validation of click reaction efficiency in methanol-fixed cells. **e** Flow cytometry results of EdU-incorporating U2OS cells after click reaction and PE-streptavidin staining as shown in (d).