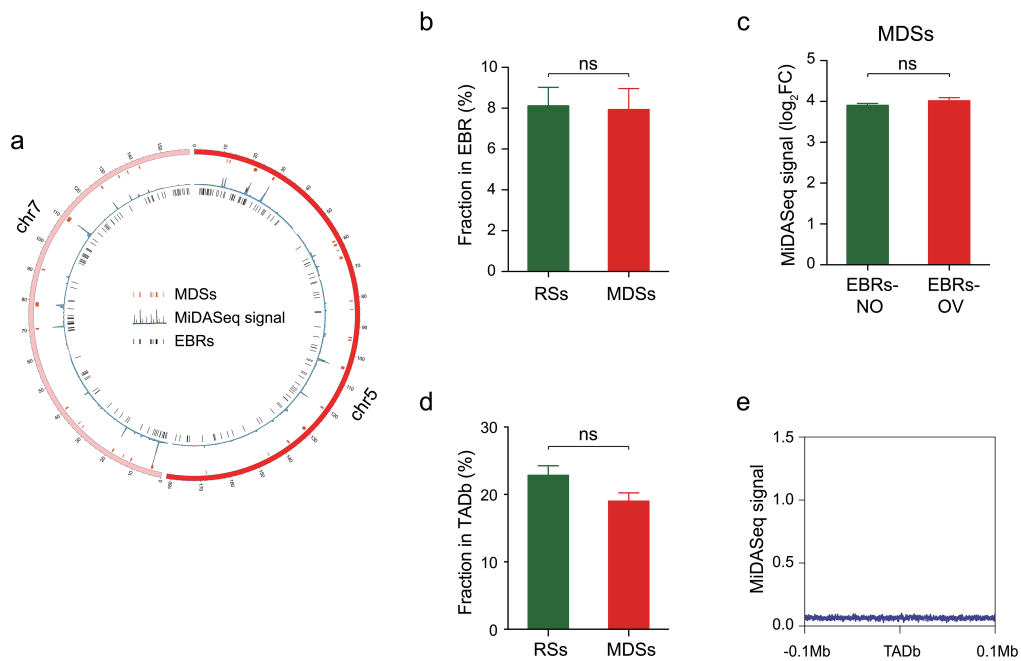


Supplementary information, Fig. S5



Supplementary information, Fig. S5

a Circos plot of MDSs, MiDASeq signal and EBRs' locations on chromosome 7 and chromosome 5. **b** Fraction of RSs and MDSs in EBRs. Data are shown as mean \pm S.E.M, $P > 0.05$ was determined using a Wilcoxon rank-sum test. **c** Quantification of MiDASeq signal in MDSs overlapped or not overlapped with EBRs. Data are shown as mean \pm S.E.M, $P > 0.05$ was determined using a Wilcoxon rank-sum test. **d** Fraction of RSs and MDSs in TAD boundaries (TADb). Data are shown as mean \pm S.E.M, $P > 0.05$ was determined using a Wilcoxon rank-sum test. **e** The aggregation plot showing the distribution of MiDASeq signal across a 200 kb window centered at TAD boundaries (TADb).