

**Antioxidant and α -glucosidase inhibitory activities guided isolation
and identification of components from mango seed kernel**

Dan Yang^{a,1}, Xuee Chen^{a,1}, Xida Liu^a, Na Han^a, Zhihui Liu^a, Sikai Li^a, Jianxiu Zhai^a,

Jun Yin^{a*}

*^a Department of Pharmacognosy and Utilization Key Laboratory of Northeast Plant
Materials, School of Traditional Chinese Medicine, Shenyang Pharmaceutical
University, Shenyang 110016, China*

*Corresponding author

Address: Shenyang Pharmaceutical University, 103 Wenhua Road, Shenhe district,
China.

E-mail address: 362354426@qq.com (Dan Yang), cxe1210@163.com (Xuee Chen),

441590920@qq.com (Xida Liu), hanna82@163.com (Na Han),

liuzhihuishenyang@163.com (Zhihui Liu), lihaoshuo672406281@126.com (Sikai Li),

lookingformilk@163.com (Jianxiu Zhai), yinjun826@sina.com (Jun Yin)

¹ These authors are joint the first authors.

List for supporting information

Figure S1. GC–MS chromatogram of the petroleum ether fraction from mango kernel.....	3
Figure S2. GC-MS spectrum of component S1	4
Figure S3. GC-MS spectrum of component S2	4
Figure S4. GC-MS spectrum of component S3	4
Figure S5. GC-MS spectrum of component S4	5
Figure S6. GC-MS spectrum of component S5	5
Figure S7. GC-MS spectrum of component S6	6
Figure S8. GC-MS spectrum of component S7	6
Figure S9. GC-MS spectrum of component S8	7
Figure S10. GC-MS spectrum of component S9	7
Figure S11. GC-MS spectrum of component S10	7
Figure S12. GC-MS spectrum of component S11	8
Figure S13. GC-MS spectrum of component S12	8
Figure S14. GC-MS spectrum of component S13	9
Figure S15. GC-MS spectrum of component S14	9
Figure S16. GC-MS spectrum of component S15	10
Figure S17. GC-MS spectrum of component S16	10
Figure S18. GC-MS spectrum of component S17	10
Figure S19. GC-MS spectrum of component S18	11
Figure S20. GC-MS spectrum of component S19	11
Figure S21. GC-MS spectrum of component S20	11
Figure S22. GC-MS spectrum of component S21	12
Figure S23. GC-MS spectrum of component S22	12
Figure S24. GC-MS spectrum of component S23	12
Table S1 Molecular interactions of the α -glucosidase (3A4A) active site with compounds 1-2	13

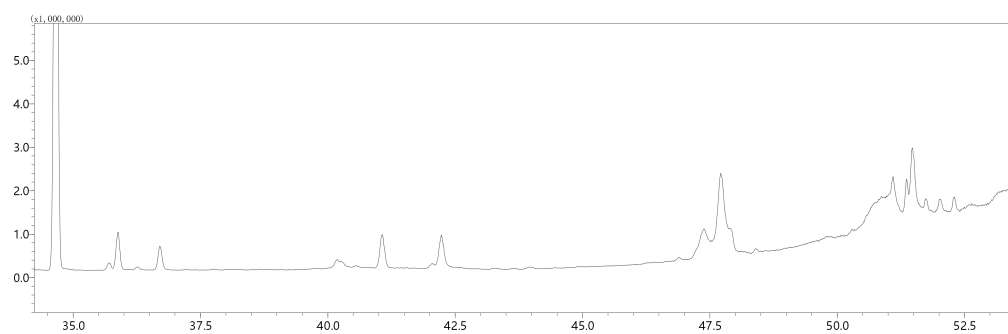
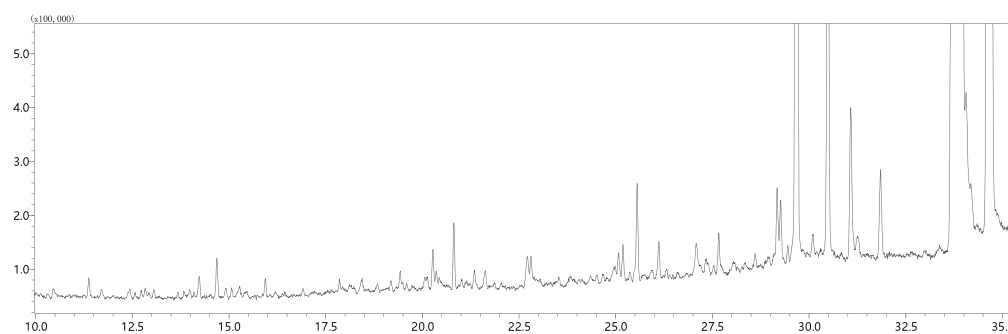
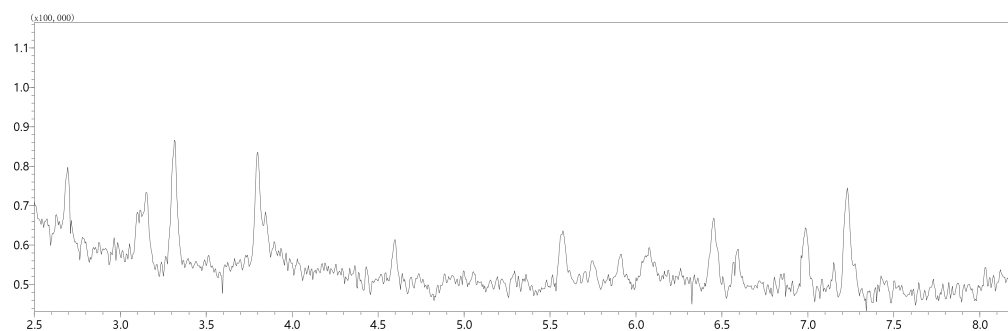
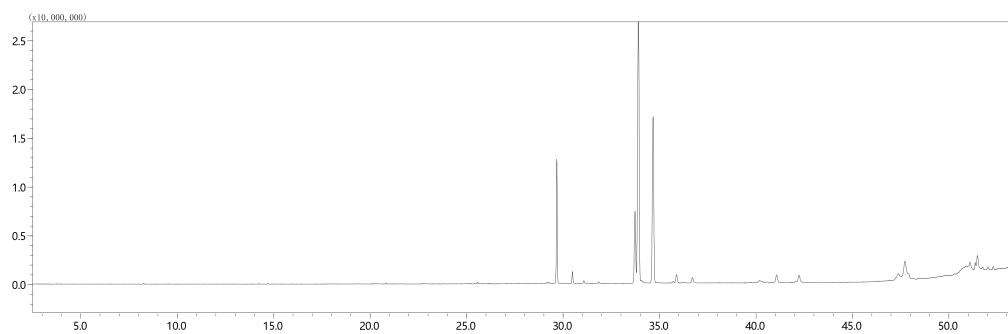


Figure S1. GC-MS chromatogram of the petroleum ether fraction from mango seed kernel

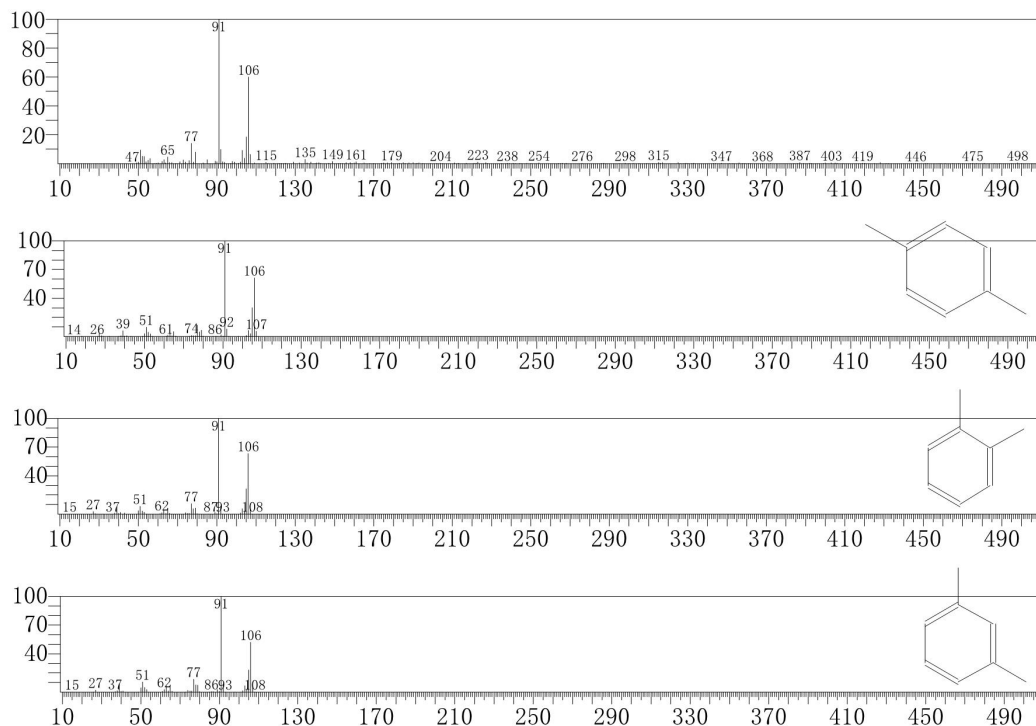


Figure S2. GC-MS spectrum of component 1

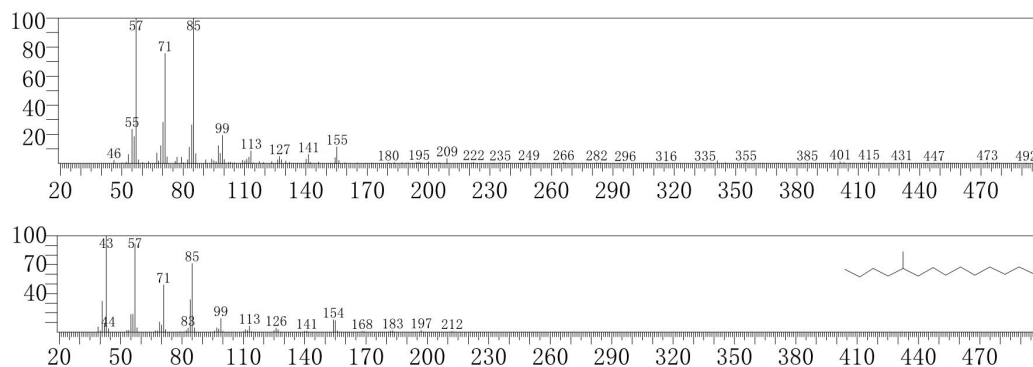


Figure S3. GC-MS spectrum of component 2

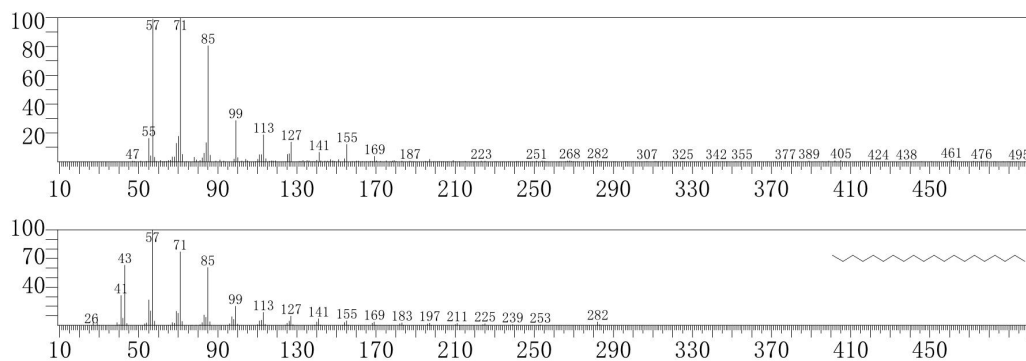


Figure S4. GC-MS spectrum of component 3

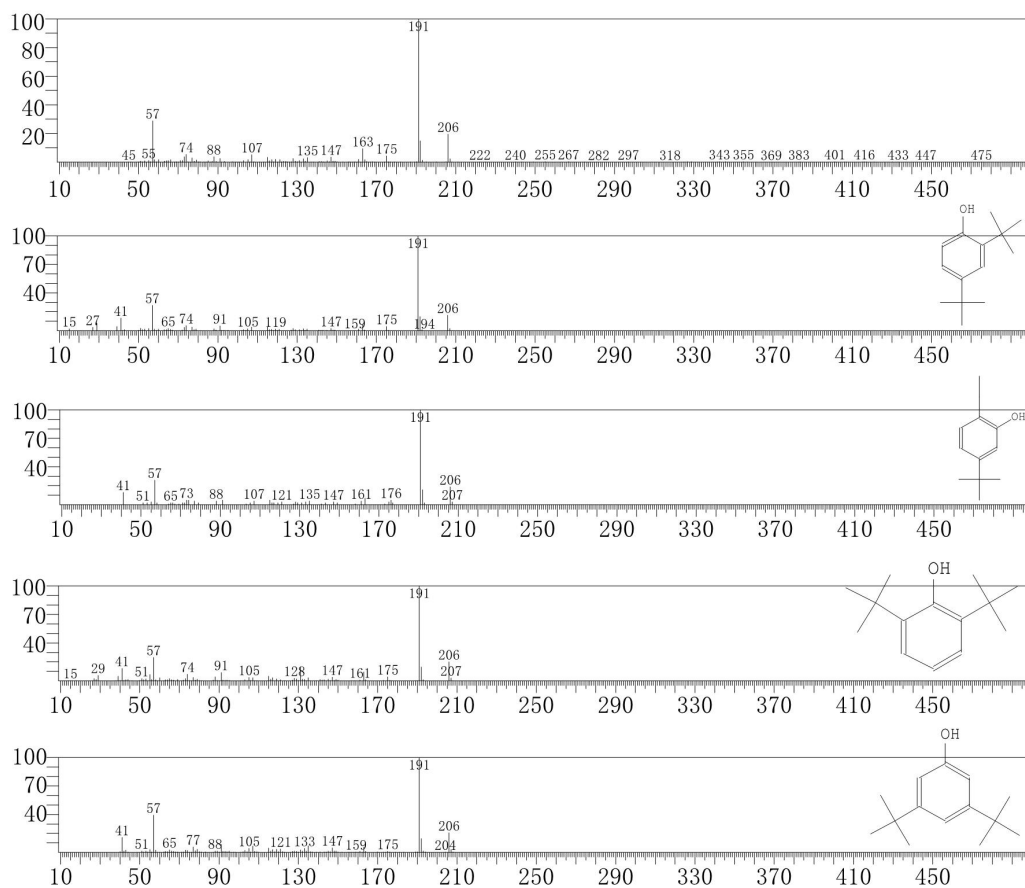


Figure S5. GC-MS spectrum of component 4

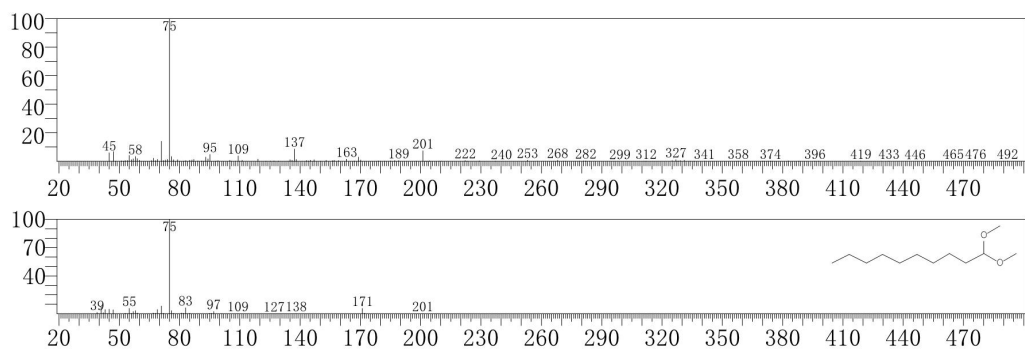


Figure S6. GC-MS spectrum of component 5

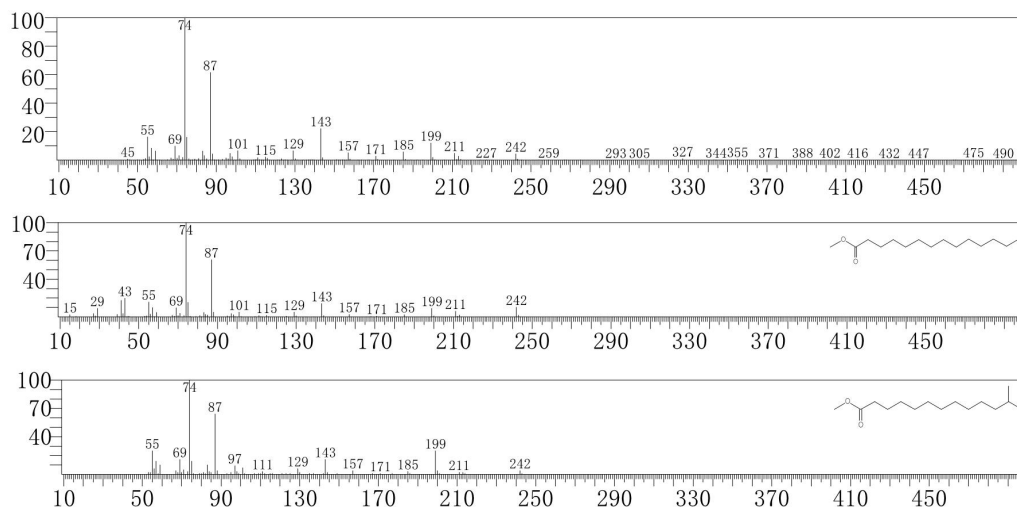


Figure S7. GC-MS spectrum of component 6

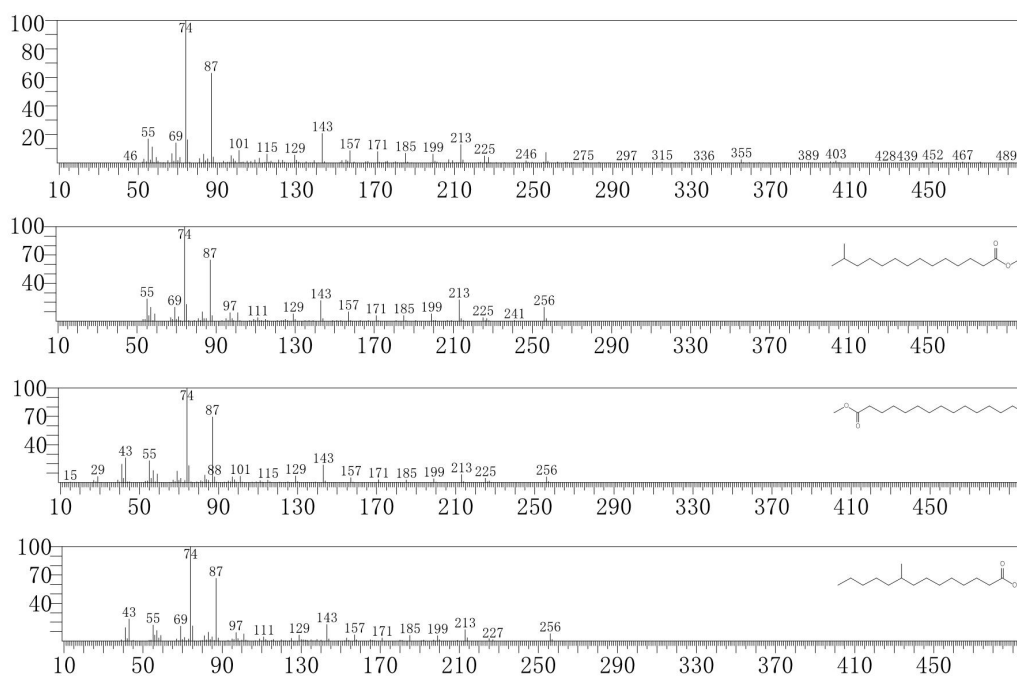


Figure S8. GC-MS spectrum of component 7

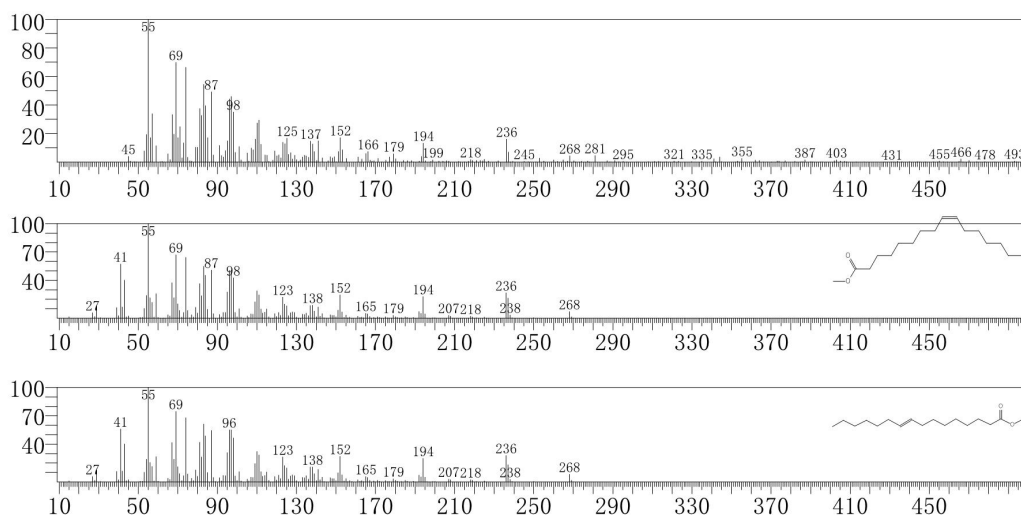


Figure S9. GC-MS spectrum of component **8**

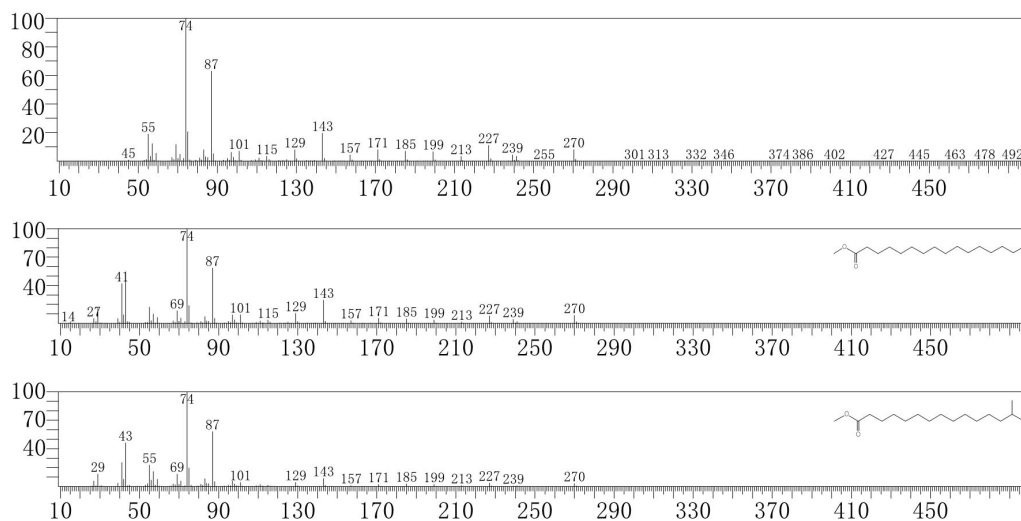


Figure S10. GC-MS spectrum of component **9**

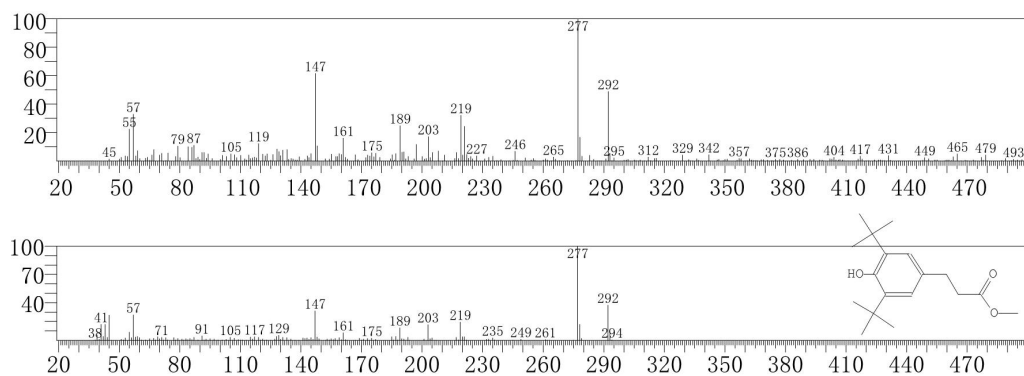


Figure S11. GC-MS spectrum of component **10**

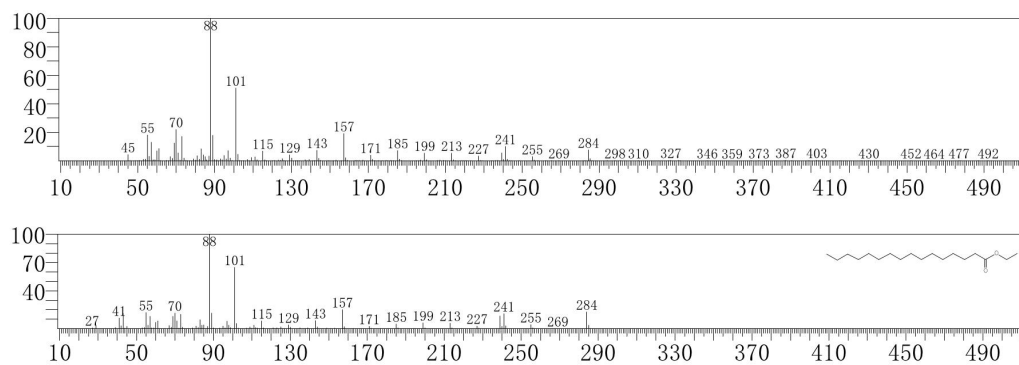


Figure S12. GC-MS spectrum of component 11

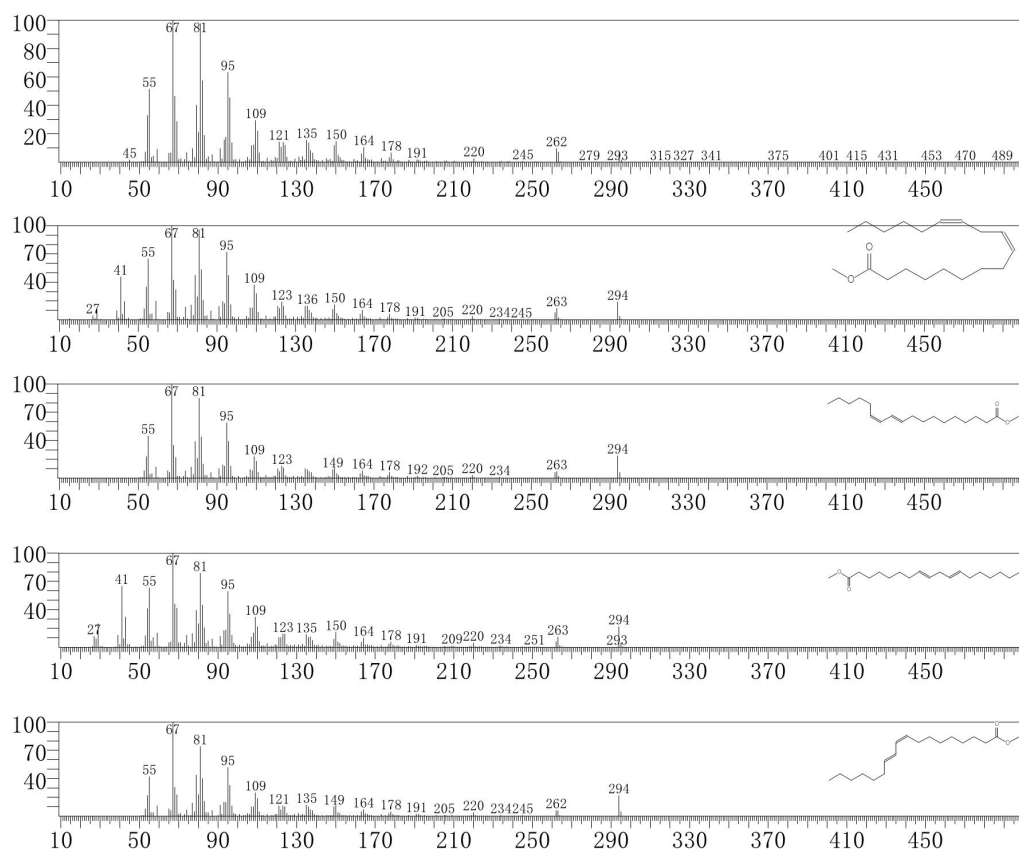


Figure S13. GC-MS spectrum of component 12

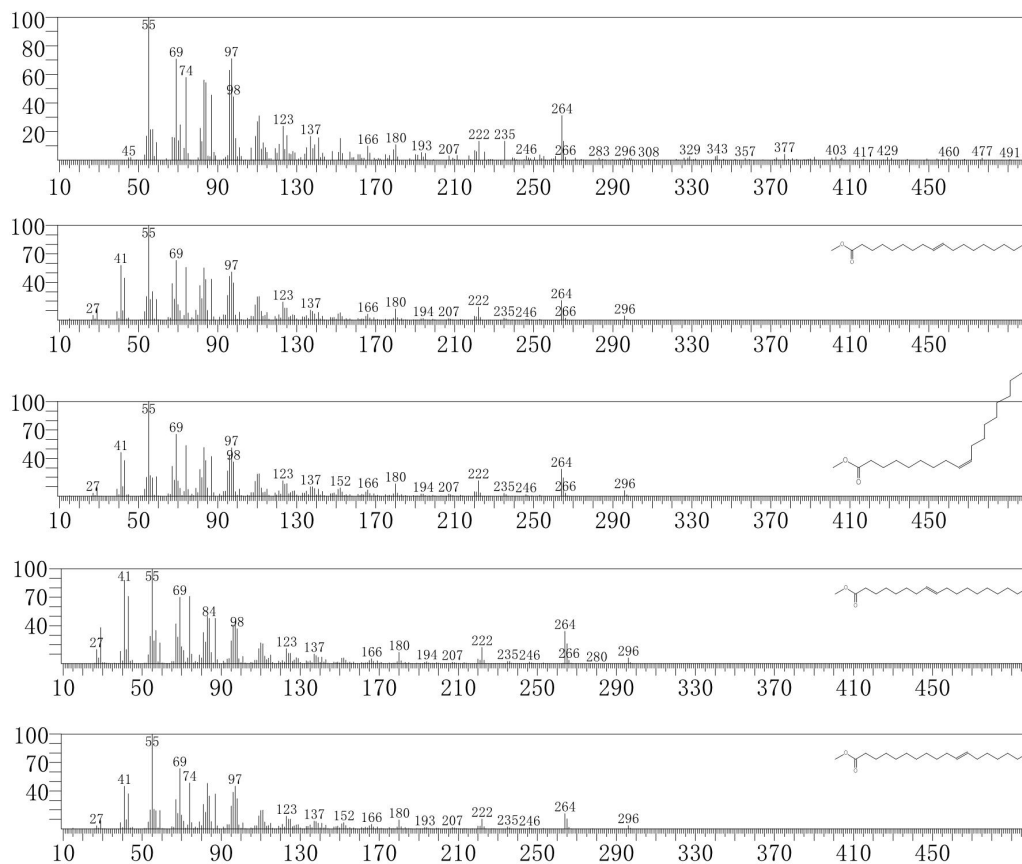


Figure S14. GC-MS spectrum of component 13

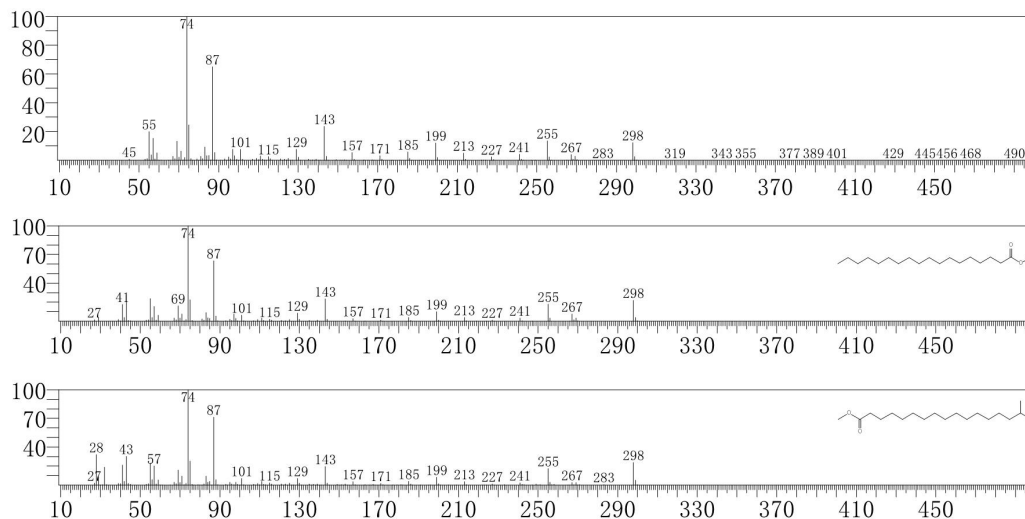


Figure S15. GC-MS spectrum of component 14

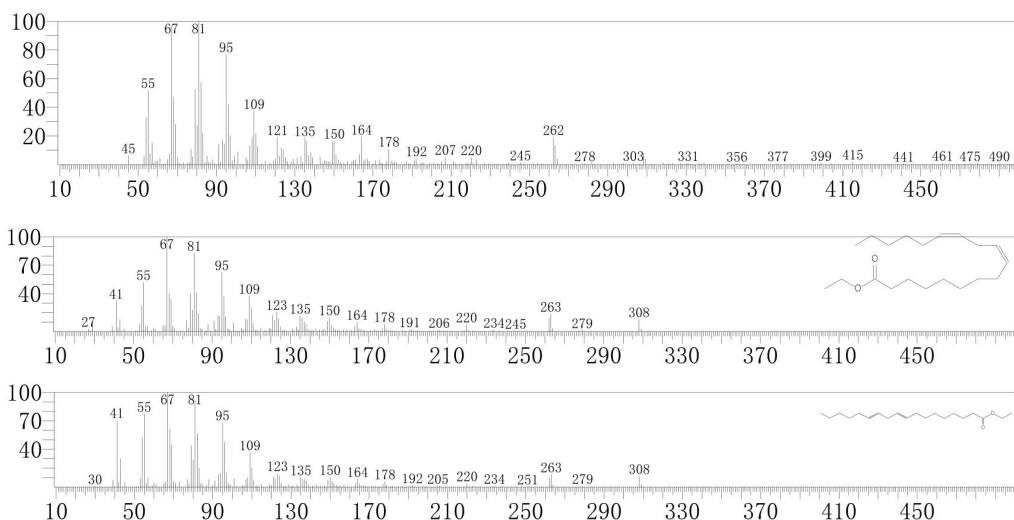


Figure S16. GC-MS spectrum of component 15

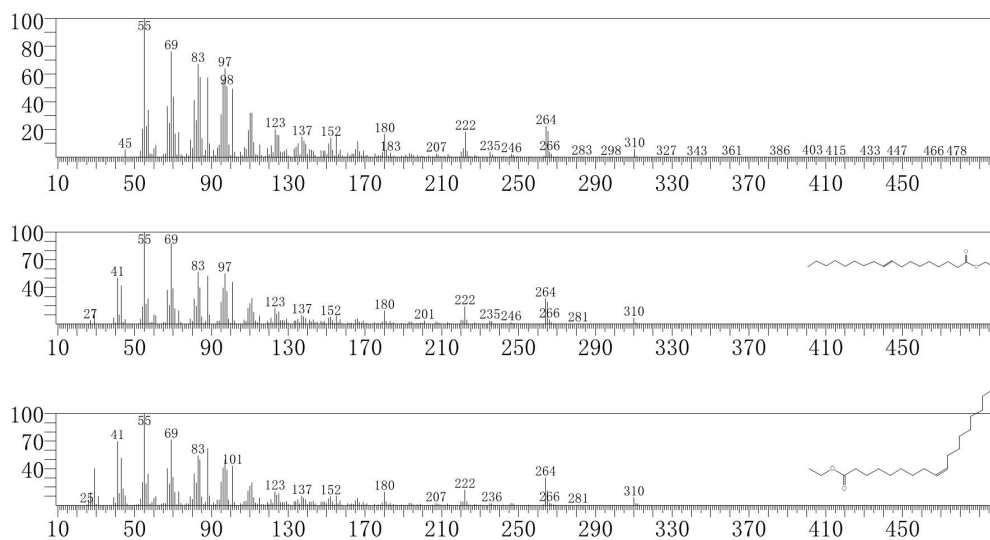


Figure S17. GC-MS spectrum of component 16

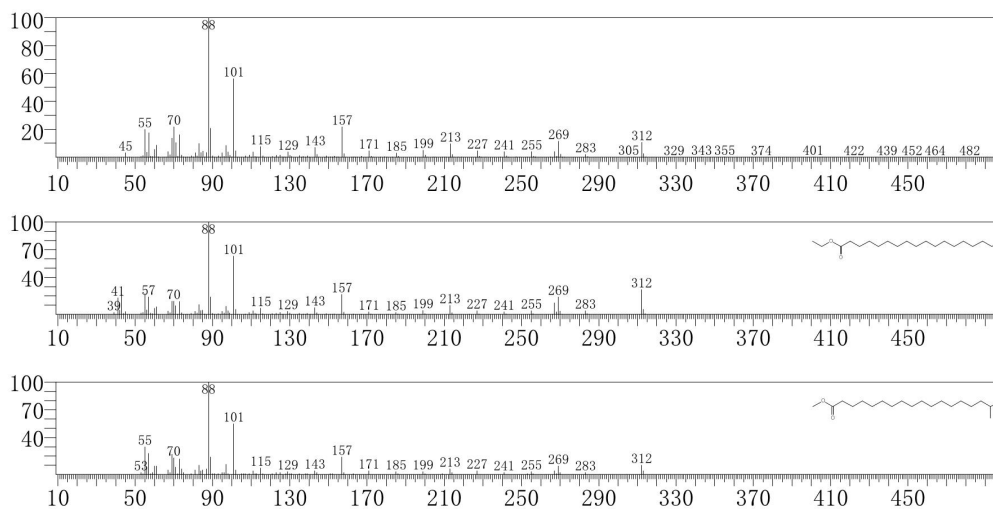


Figure S18. GC-MS spectrum of component 17

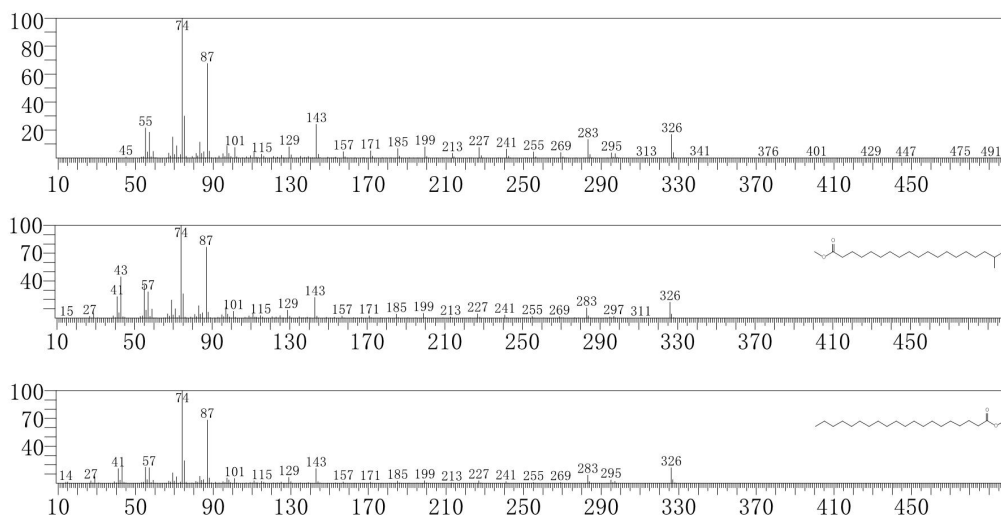


Figure S19. GC-MS spectrum of component 18

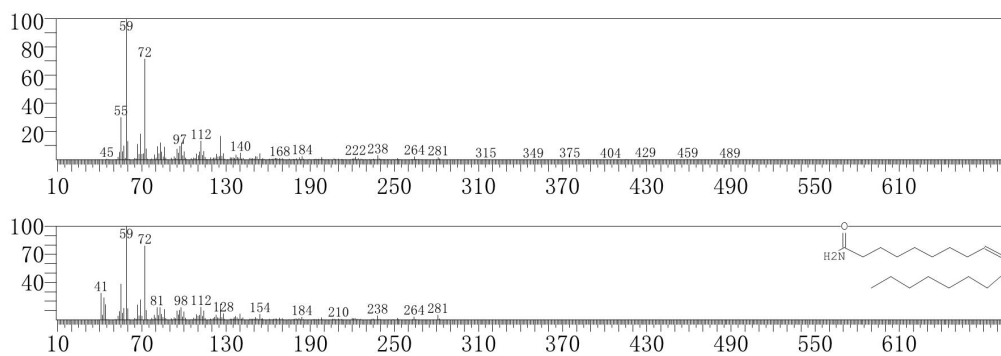


Figure S20. GC-MS spectrum of component 19

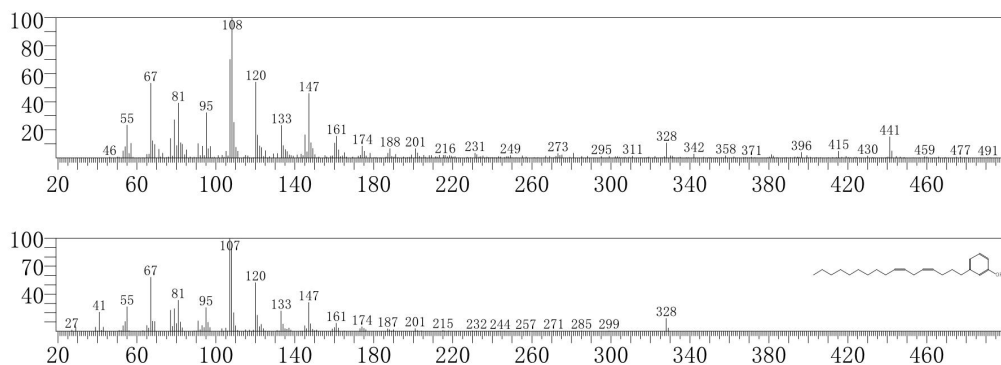


Figure S21. GC-MS spectrum of component 20

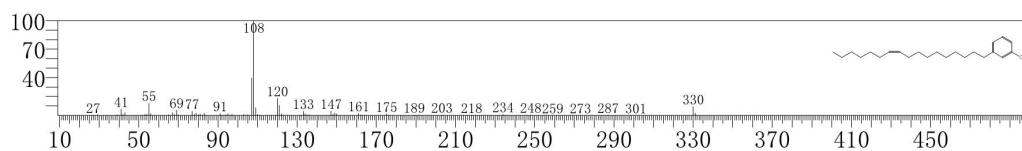
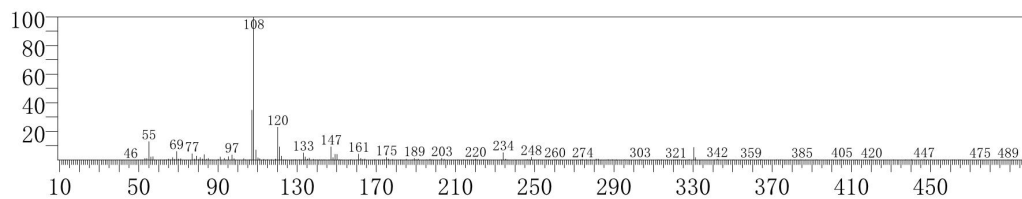


Figure S22. GC-MS spectrum of component **21**

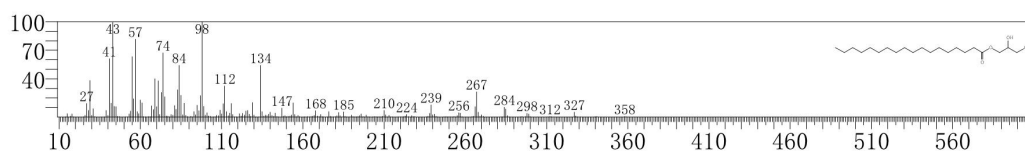
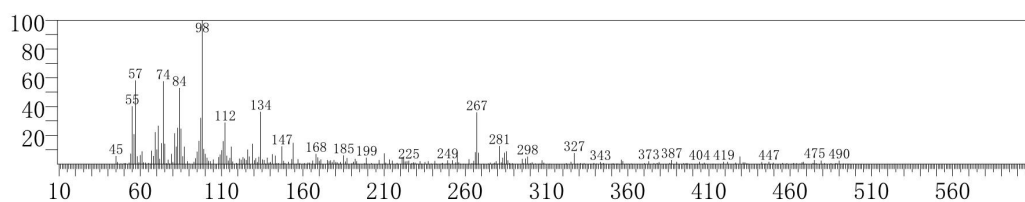


Figure S23. GC-MS spectrum of component **22**

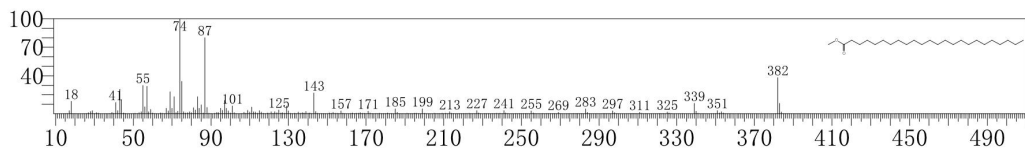
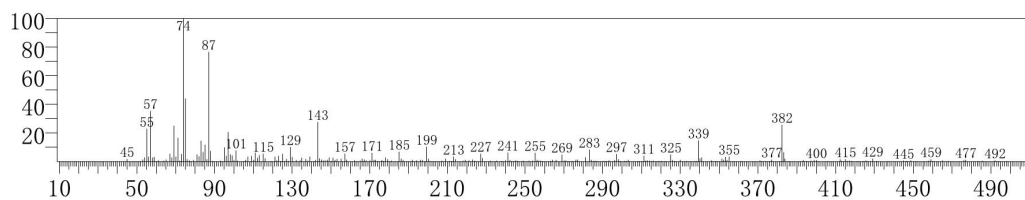


Figure S24. GC-MS spectrum of component **23**

Table S1 Molecular interactions of the α -glucosidase (3A4A) active site with compounds **1** and **2**.

Compounds	Binding energy (kcal/mol)	H-bond	Hydrophobic interaction			Others
			Pi-Alkyl	Pi-Pi T-shaped	Pi-Pi Stacked	Pi-Anion
1	-2.41	LYS466, THR83, TRP81, SER65, PRO66, GLN67, ARG413, LYS406		TRP36	TYR470	
2	-3.55	SER304, GLY309, PRO312, THR310, SER240, HIS280	PRO312, HIS280, ARG315	TYR158, HIS280		ASP242
Acarbose	-4.53	SER304, ASN302, GLU332, SER241, LYS156, ARG315, PRO312				