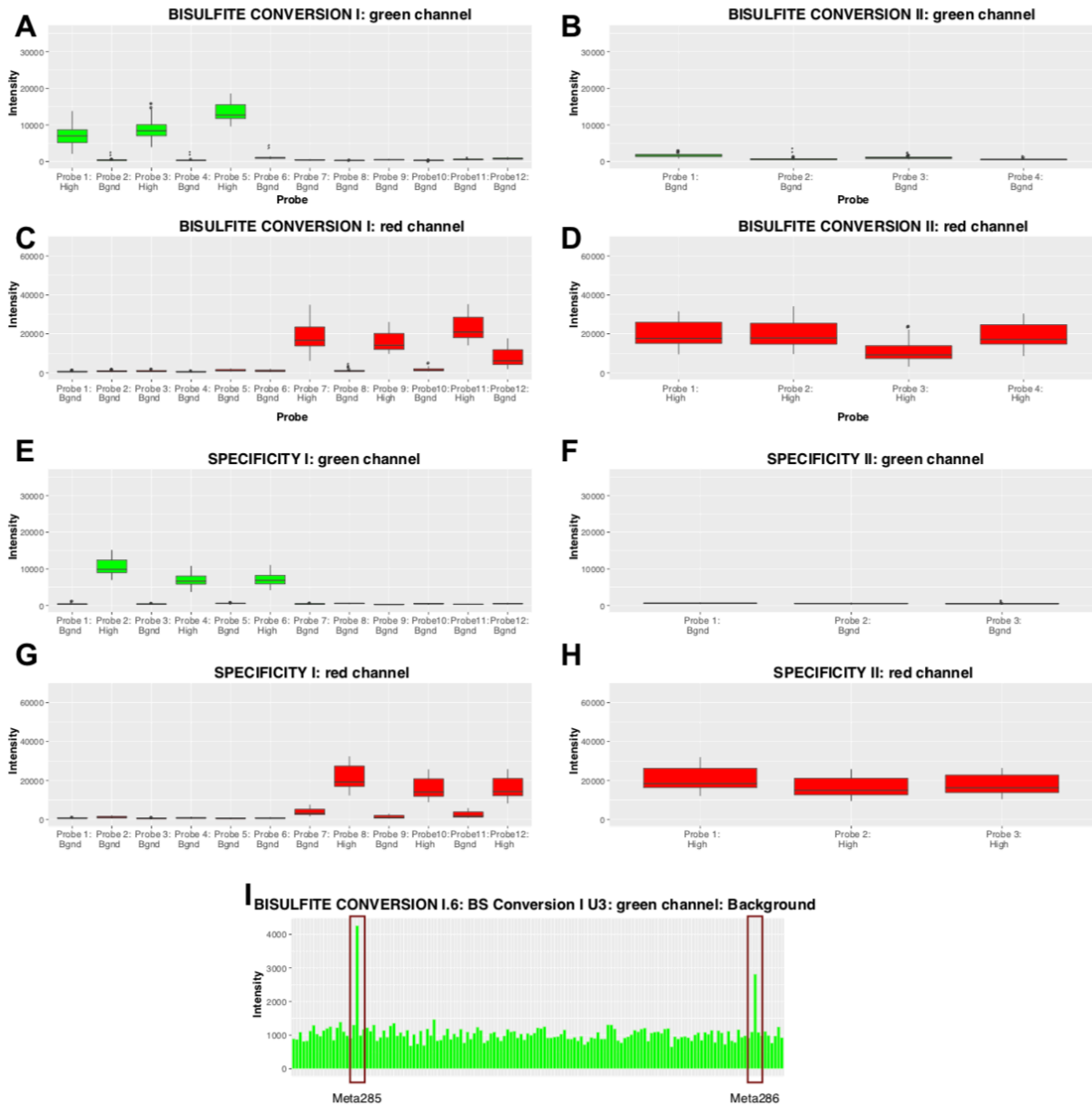


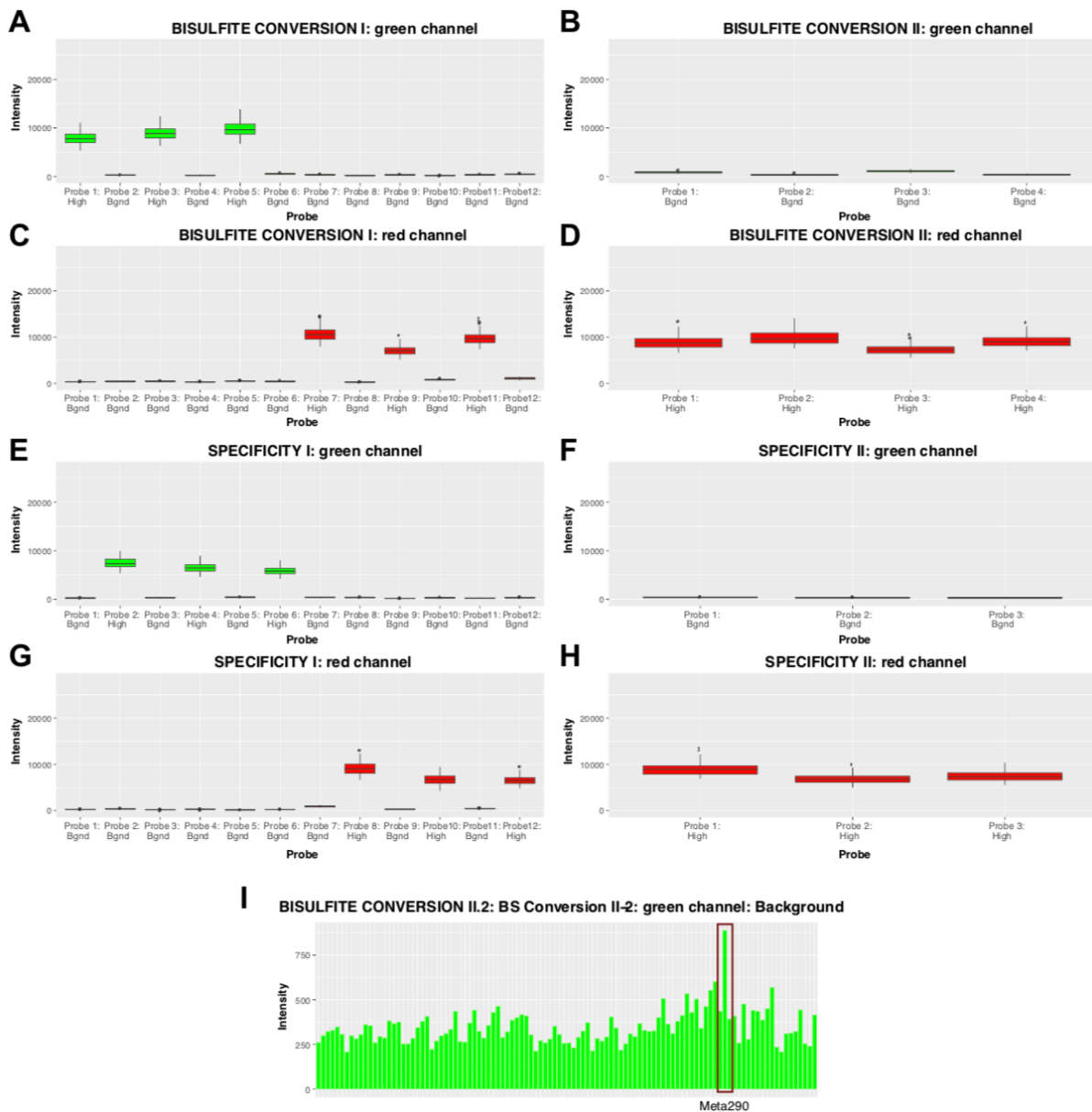
1 Supplementary Methods Figure 1



2
 3 **Supplementary Methods Figure 1 | RnBeads quality control EWOG-MDS.** Quality
 4 control box plots showing the intensities for bisulfite conversion (A-D) and specificity
 5 (E-H) control probes on the 450k array for EWOG-MDS patients. Outlier intensities
 6 were detected based on inspection of intensity bar plots for each control probe (I).

7

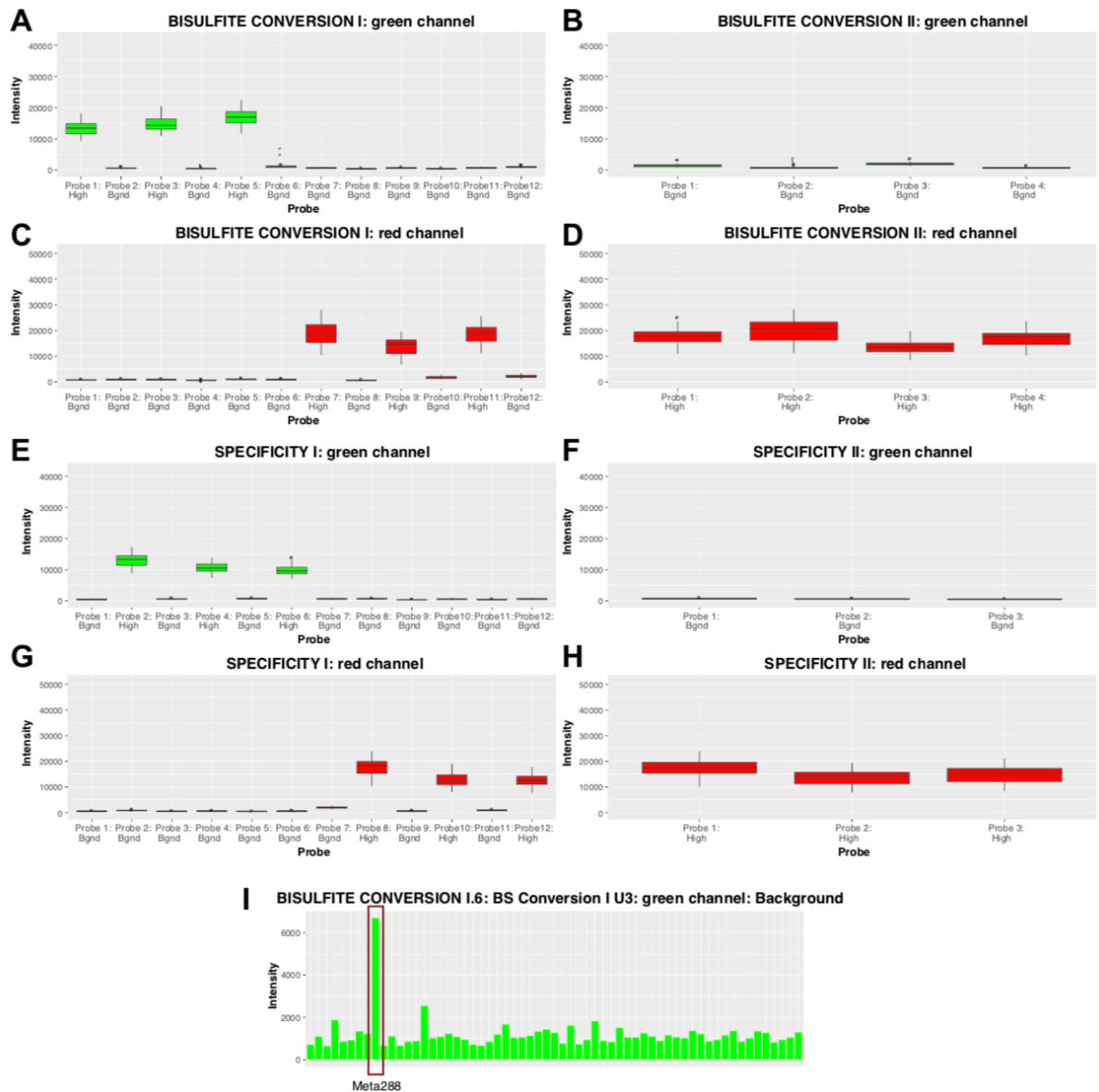
8 Supplementary Methods Figure 2



9
10
11
12
13
14
15

Supplementary Methods Figure 2 | RnBeads quality control Japan. Quality control box plots showing the intensities for bisulfite conversion (A-D) and specificity (E-H) control probes on the 450k array for Japanese patients. Outlier intensities were detected based on inspection of intensity bar plots for each control probe (I).

16 **Supplementary Methods Figure 3**



17

18 **Supplementary Methods Figure 3 | RnBeads quality control USA.** Quality control
 19 box plots showing the intensities for bisulfite conversion (A-D) and specificity (E-H)
 20 control probes on the 450k array for US patients. Outlier intensities were detected
 21 based on inspection of intensity bar plots for each control probe (I).

22

23 **Supplementary Methods Table 1**

24 **Supplementary Methods Table 1 | Genes included in targeted sequencing panel.**

25 Gene name, location and ENSEMBL-ID are shown for all genes included in the
 26 targeted sequencing panel. (ccds = consensus coding sequence)

GENE	TYPE	EXONS	ENSEMBL
ASXL1	hotspot	12	ENST00000375687
BRAF	hotspot	15	ENST00000646891.1
CBL	hotspot	7,8,9	ENST00000264033
DNMT3A	full ccds	all	ENST00000264709
ETV6	full ccds	all	ENST00000396373.4
EZH2	full ccds	all	ENST00000320356
GATA2	full ccds	all	ENST00000341105
JAK3	full ccds	all	ENST00000458235
KRAS	hotspot	2,3	ENST00000256078
MAP2K1	hotspot	2,3,5,6	ENST00000307102
NF1	full ccds	all	ENST00000358273
NRAS	hotspot	2,3	ENST00000369535
PTPN11	hotspot	3,4,13	ENST00000351677
RAC2	full ccds	all	ENST00000249071
RAF1	hotspot	7	ENST00000251849.8
RIT1	full ccds	all	ENST00000368323.7
RRAS	full ccds	all	ENST00000246792
RRAS2	hotspot	4	ENST00000545643
RUNX1	full ccds	all	ENST00000300305
SAMD9	full ccds	all	ENST00000379958
SAMD9L	full ccds	all	ENST00000318238
SETBP1	hotspot	4	ENST00000282030
SH2B3	full ccds	all	ENST00000341259
SOS1	full ccds	all	ENST00000341259
ZRSR2	full ccds	all	ENST00000307771

27

28

29