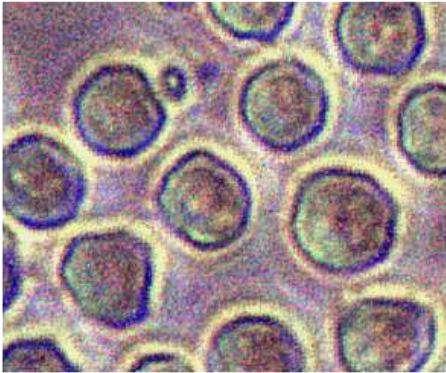
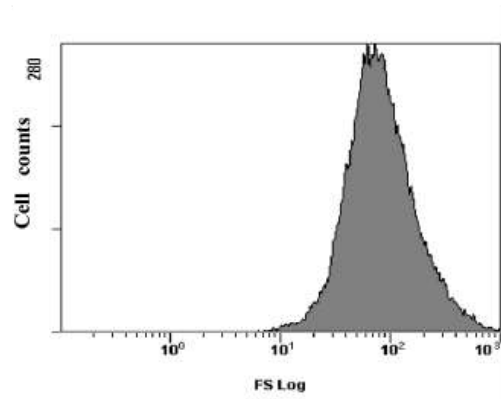
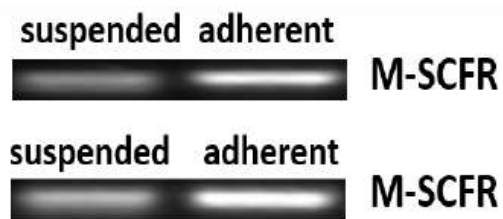


A**B****C**

Supplemental Figure 1. The morphology and characterization of HKMs. (A-B) The adherent monolayer was examined by Giemsa staining (A) or analyzed by flow cytometry (B). (C) The non-adherent and adherent cells were collected respectively, and the gene expression of macrophage colony-stimulating factor receptor (M-CSFR) in two groups was detected by PCR. The figure was representative of at least three independent experiments.