

Cancer Cell, Volume 39

Supplemental Information

**Changes in Treatment Behavior
during the COVID-19 Pandemic
among Patients at a Cancer Hospital**

Yasuyoshi Sato, Yu Fujiwara, Naoki Fukuda, Brian Hayama, Yoshinori Ito, Shinji Ohno, Shunji Takahashi, and on behalf of the COVID-19 Working Group of The Cancer Institute Hospital of Japanese Foundation for Cancer Research

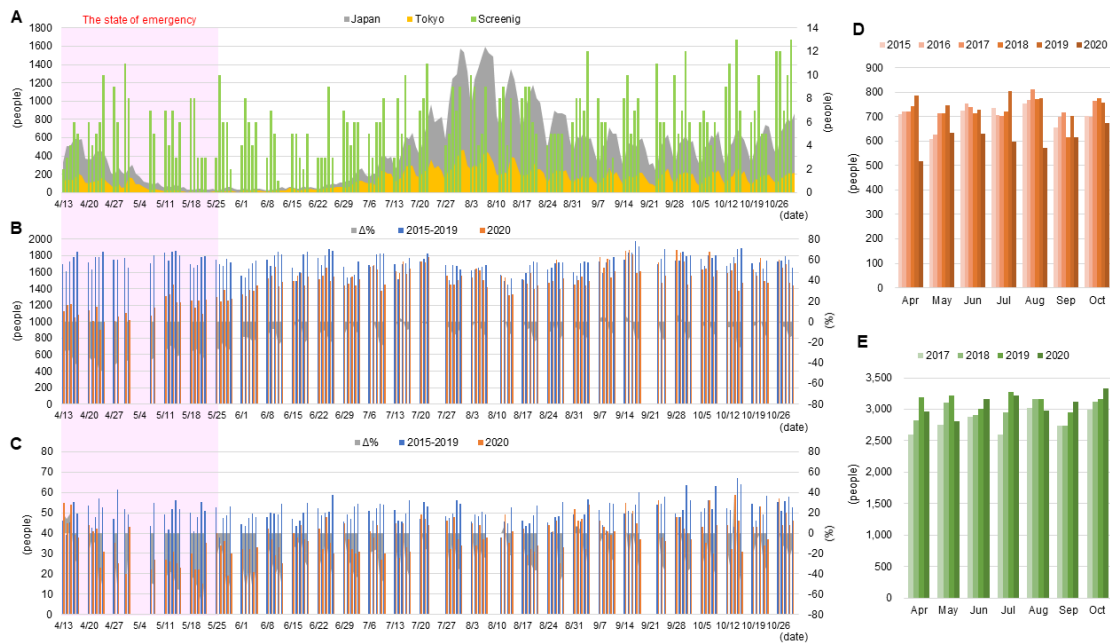


Figure S1. Numbers of outpatients and of patients with surgery or ambulatory chemotherapy at a Japanese cancer hospital. A. Numbers of symptomatic outpatients screened for COVID-19 at The Cancer Institute Hospital (per day, green bar). For comparison, numbers of new PCR-positive COVID-19 cases per day nationwide (gray area chart) and in Tokyo (yellow area chart) are shown. B. Numbers of outpatients seen in 2020 (per day, orange bar), average numbers of outpatients seen over the past 5 years (per day, blue bar) at The Cancer Institute Hospital (per day, green bar). The percentage of change in 2020 comparing to previous years (per day, gray area chart) is also shown. C. Numbers of new patients visiting The Cancer Institute Hospital in 2020 (per day, orange bar) and average numbers of new patients over the past 5 years (per day, blue bar). The percentage of change in 2020 comparing to previous years (per day, gray area chart) is also shown. D. Numbers of patients undergoing surgery at The Cancer Institute Hospital (per month) from 2015 to 2020. E. Numbers of outpatients receiving chemotherapy at the Ambulatory Therapy Center (ATC) (per month) from 2017 to 2020.