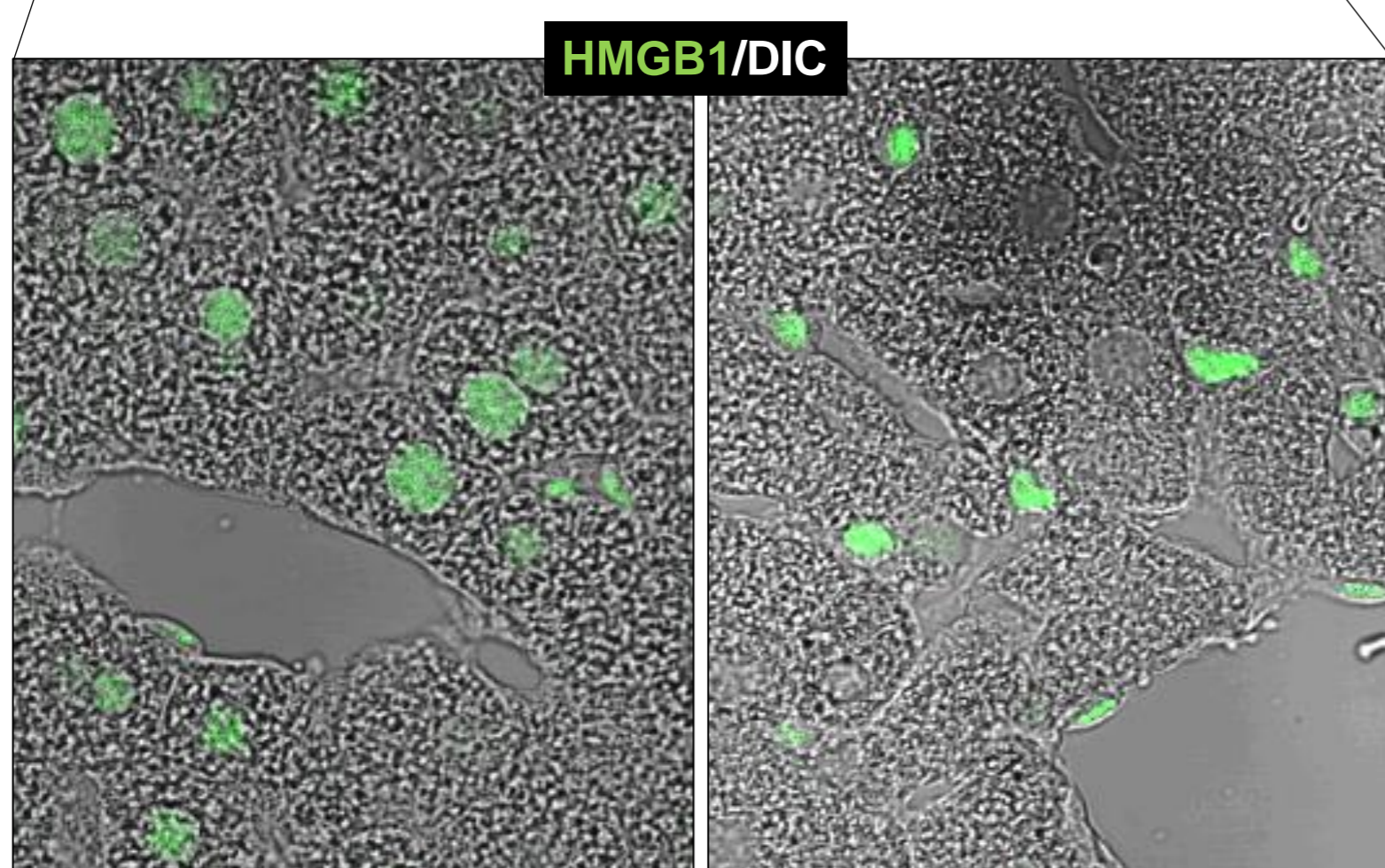
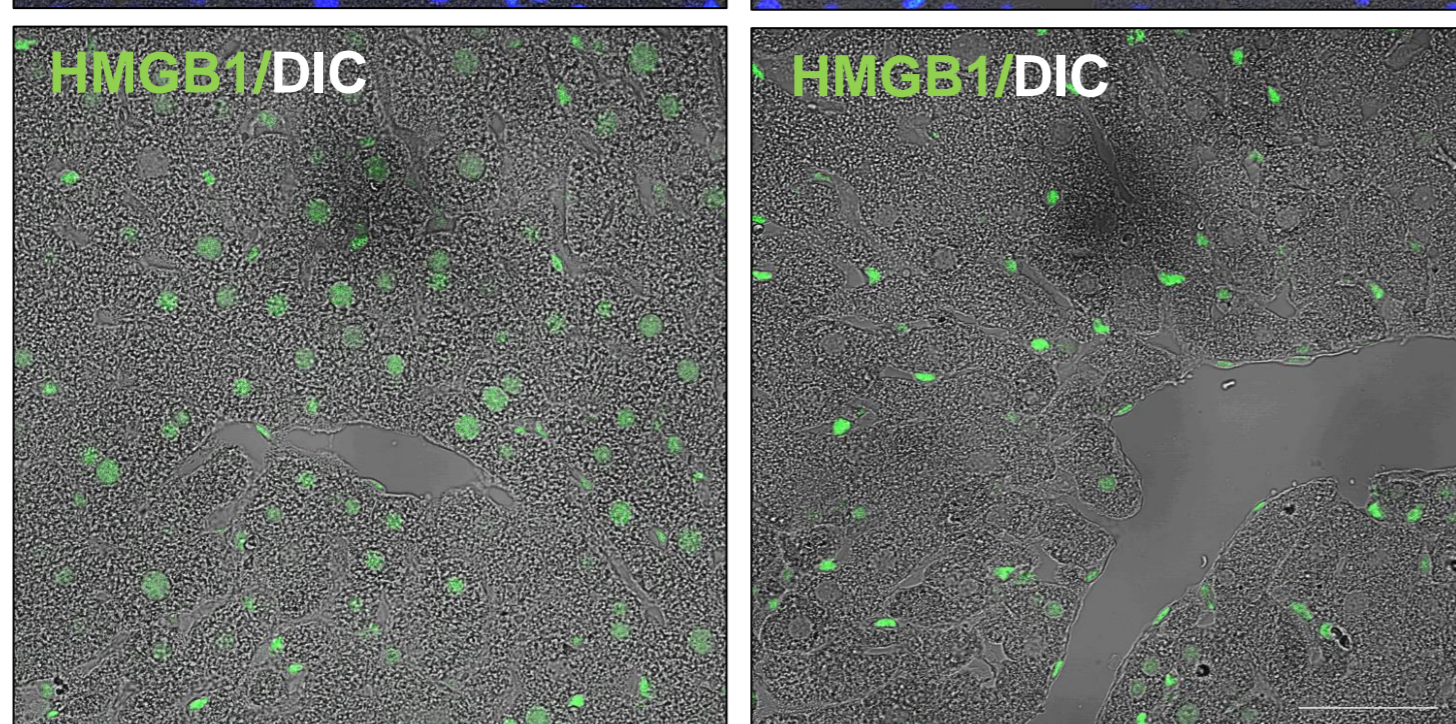
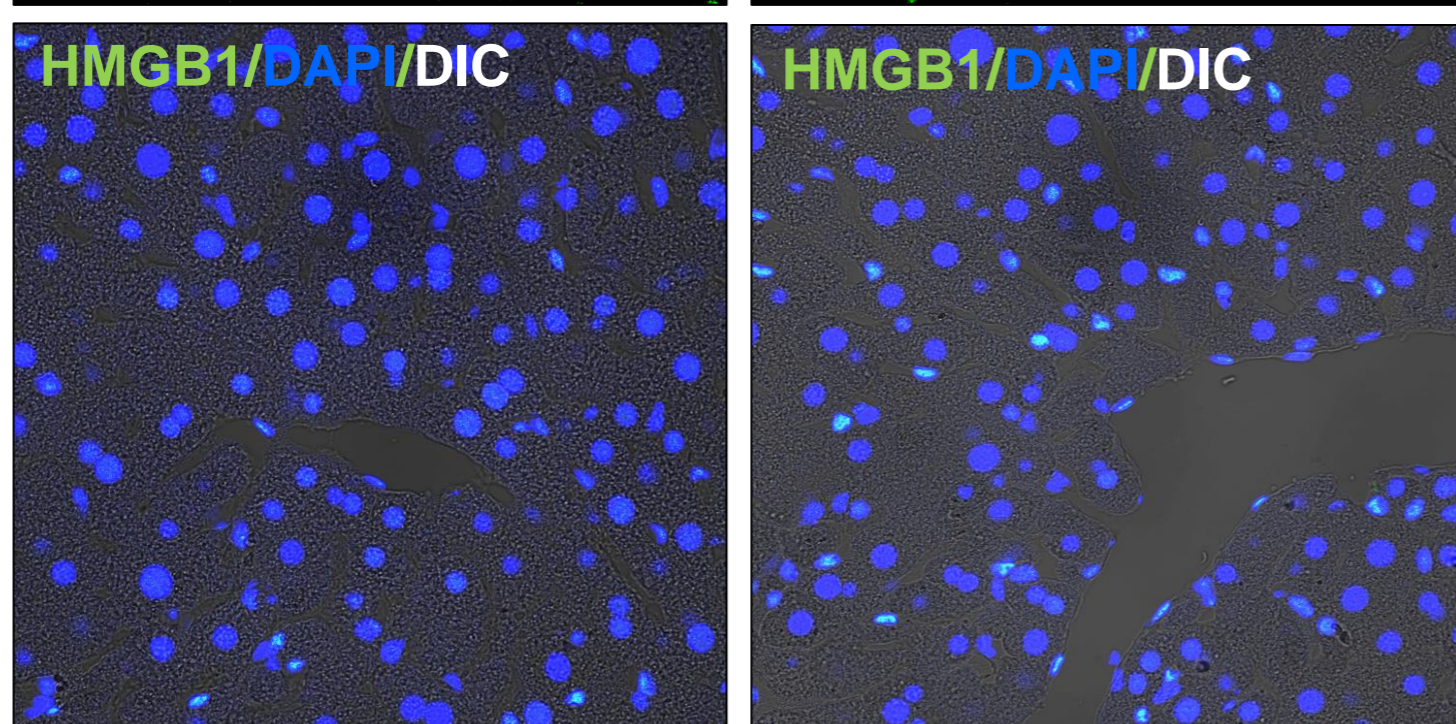
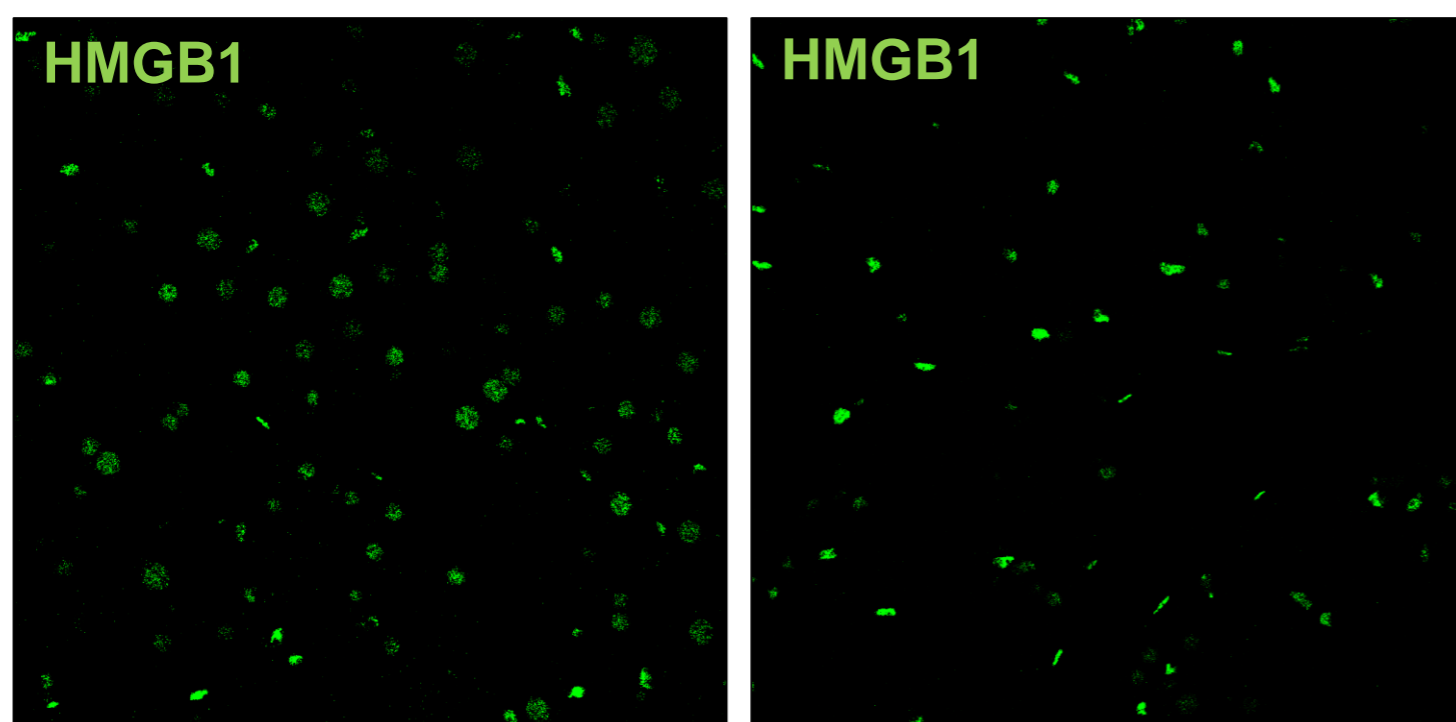


Figure S1

A

***Mouse liver tissue**

Lrat:Cas9-ERT2:sgTif1y	-	+
TMX	+	+



B

***HepG2 cell**

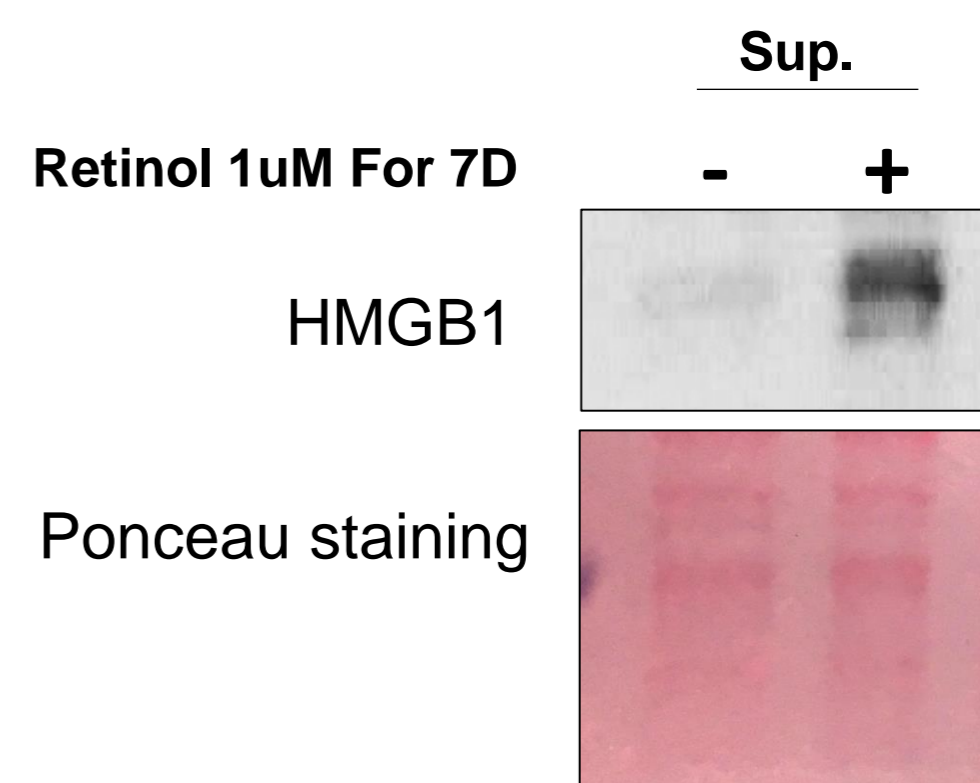
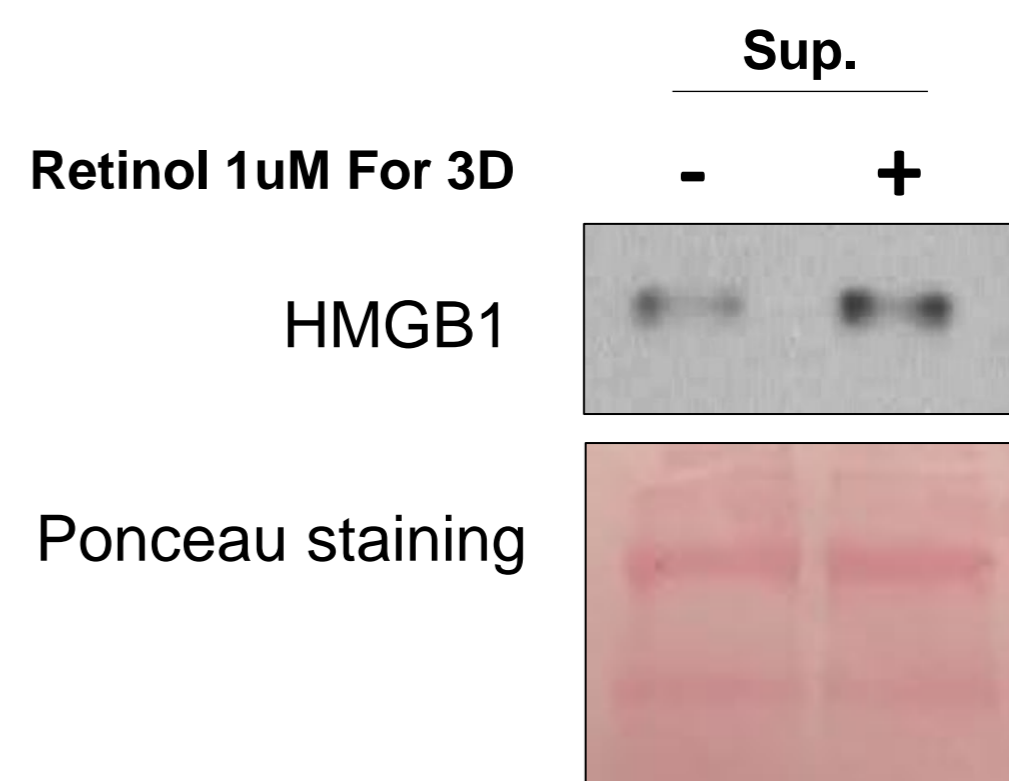
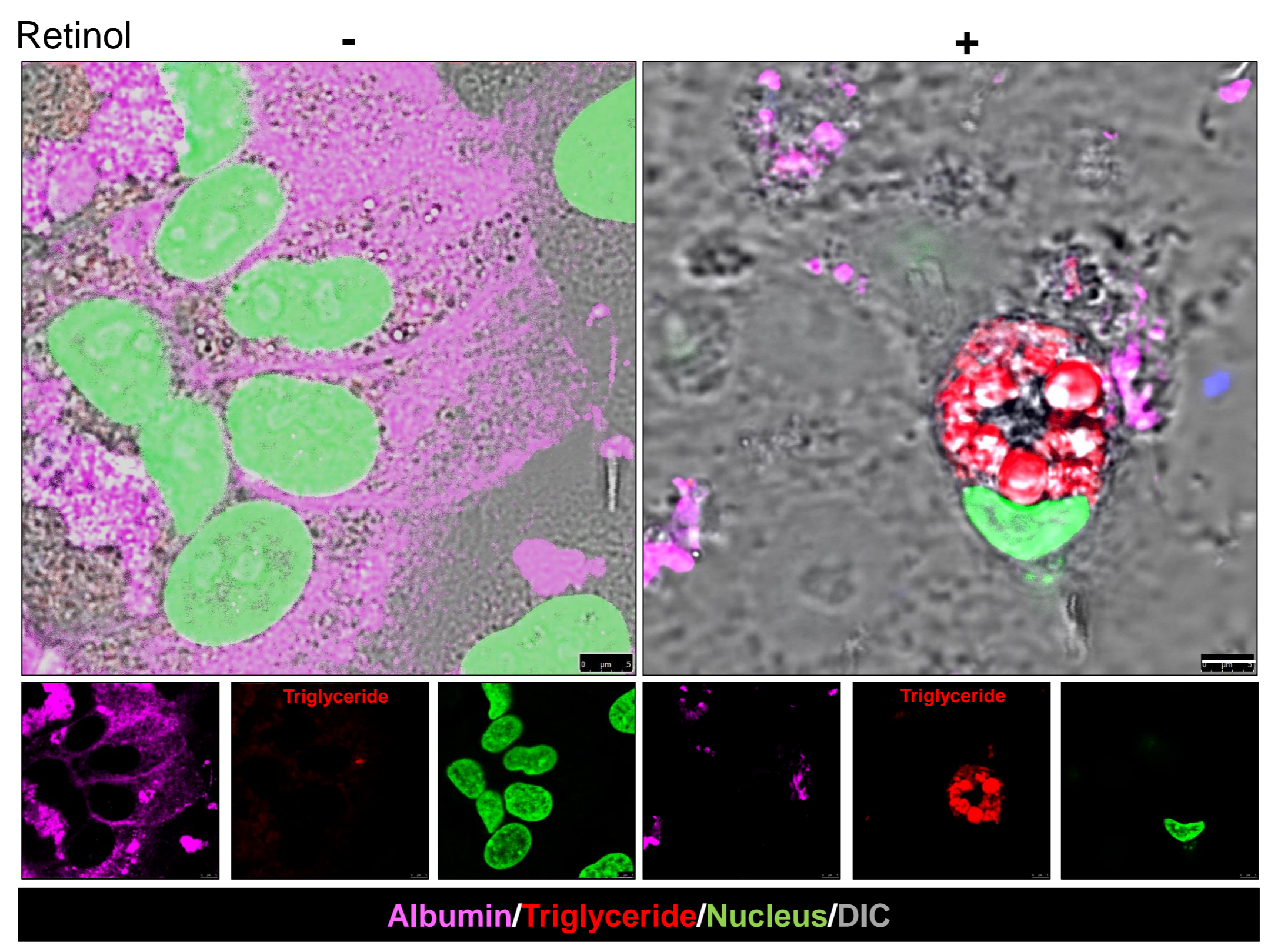


Figure S2

***HepaRG Cell (human primary cell)**



Additional data

Albumin/Triglyceride
/Nucleus/DIC

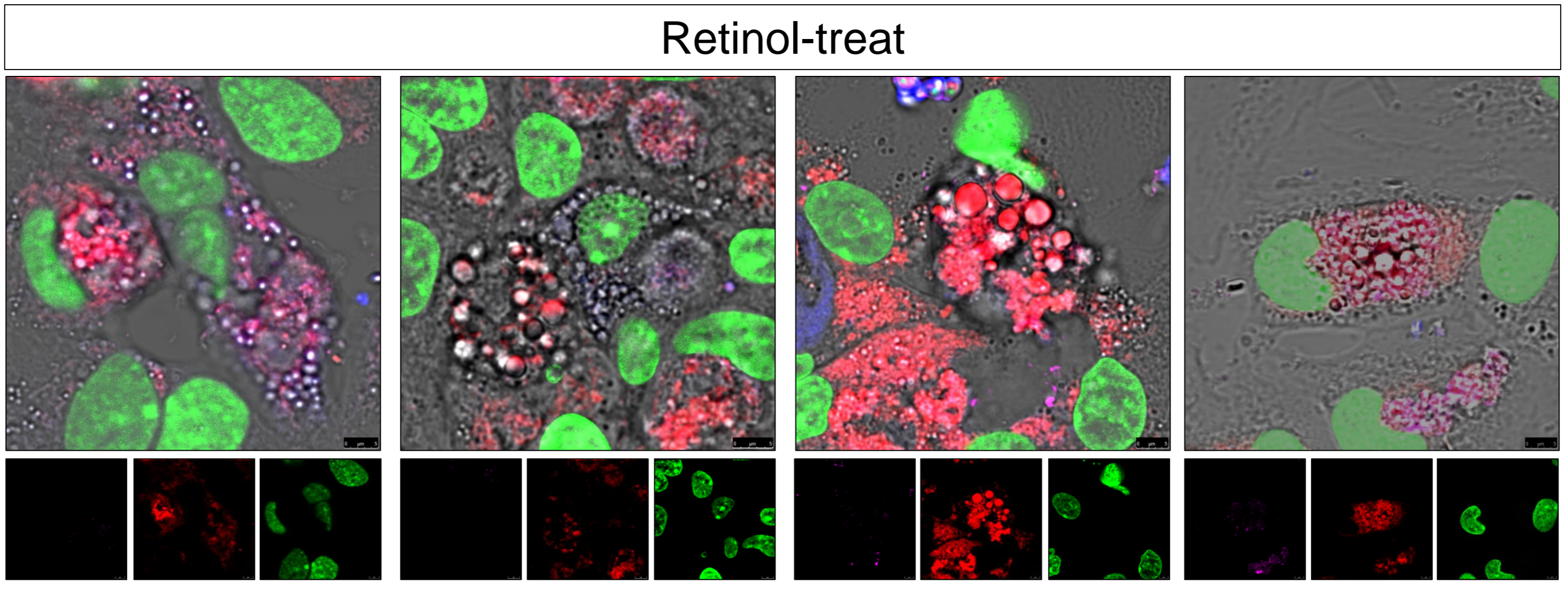
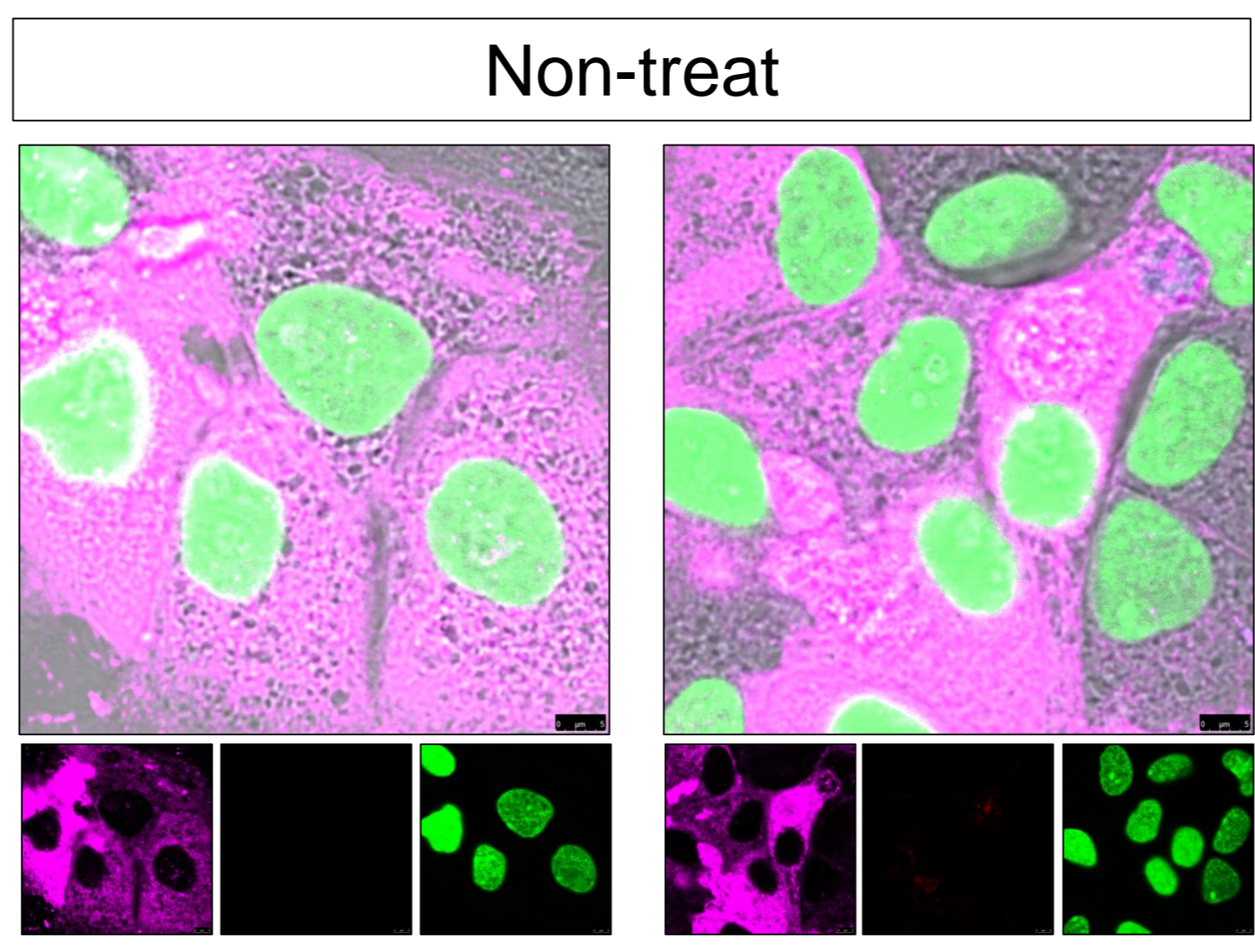
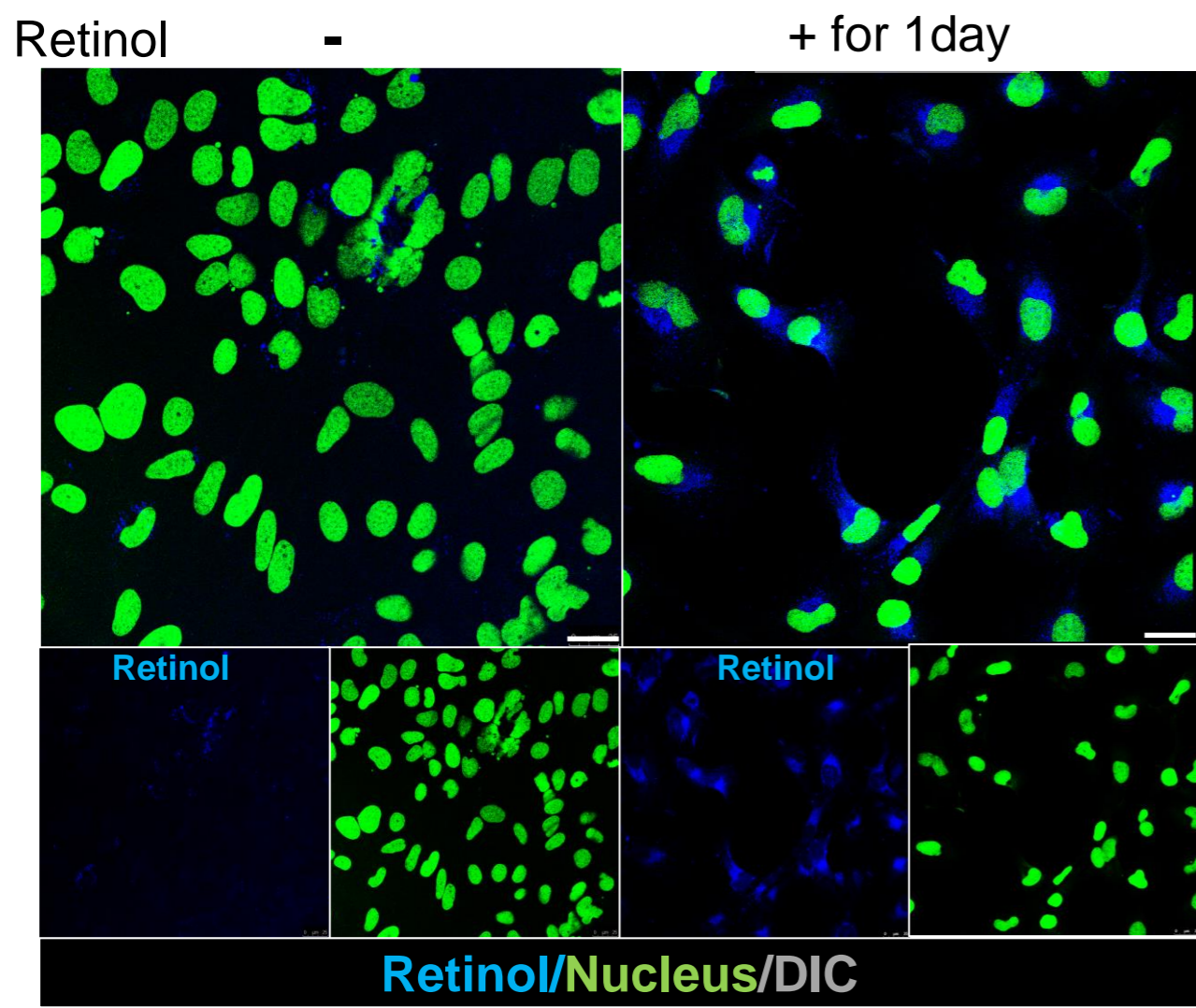


Figure S3

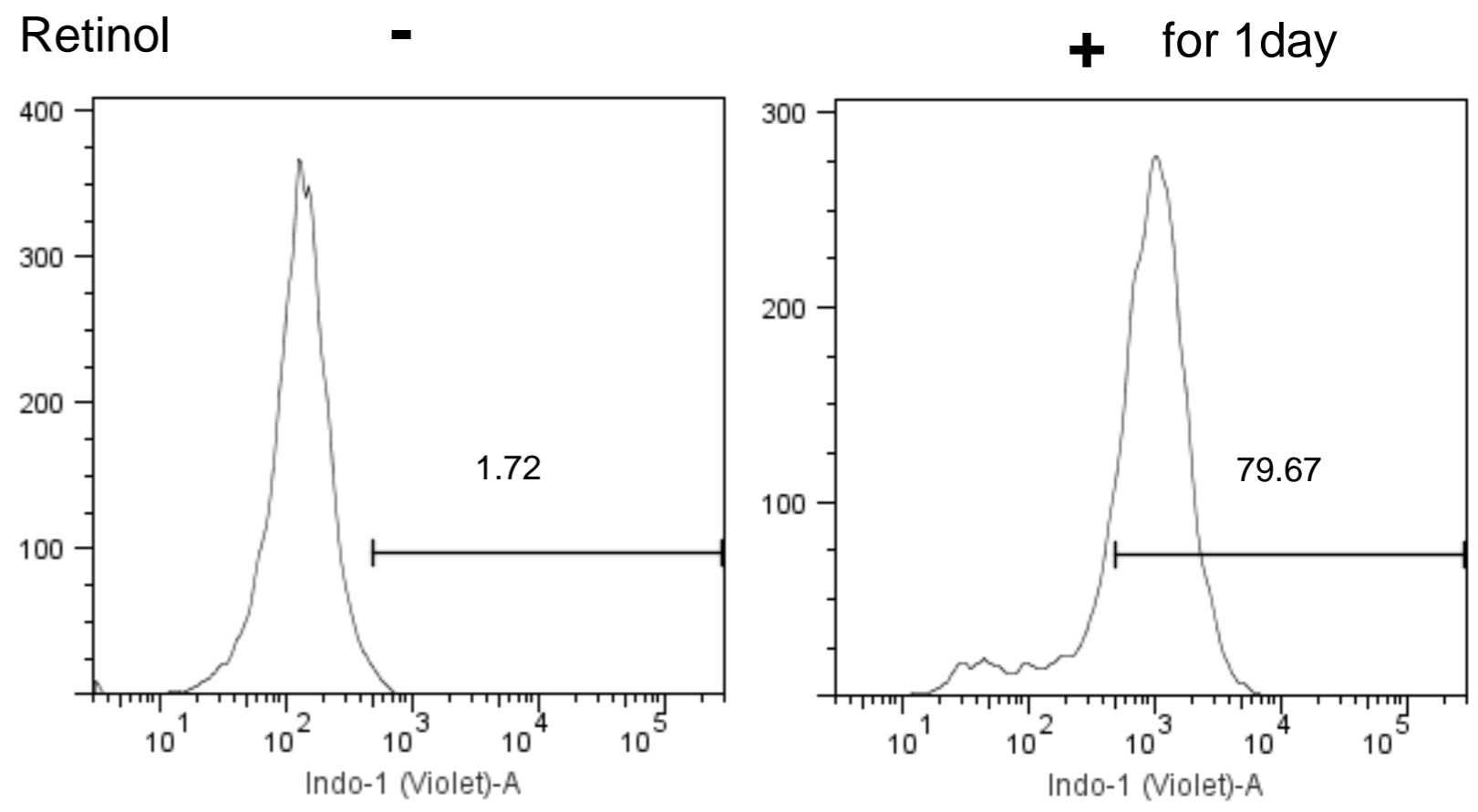
A

*LX2 cell line



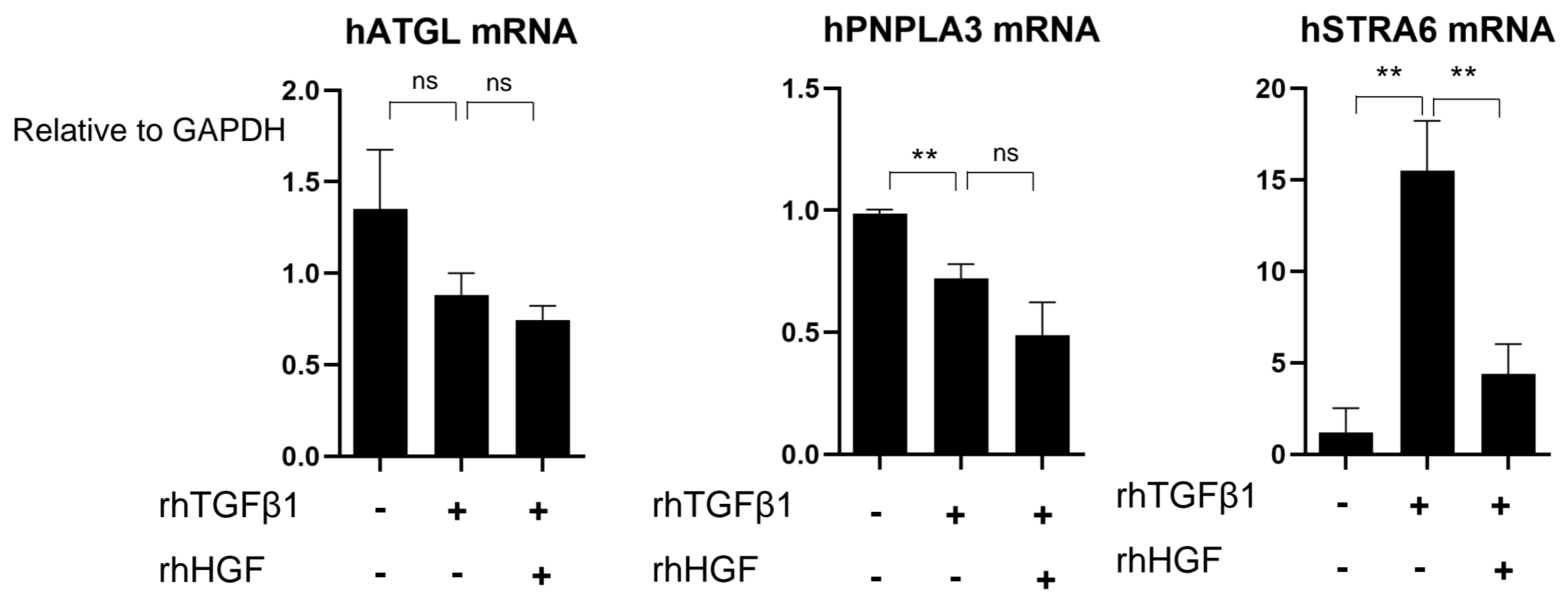
B

*LX2 cell line



C

*LX2 cell line



D

*LX2 cell line

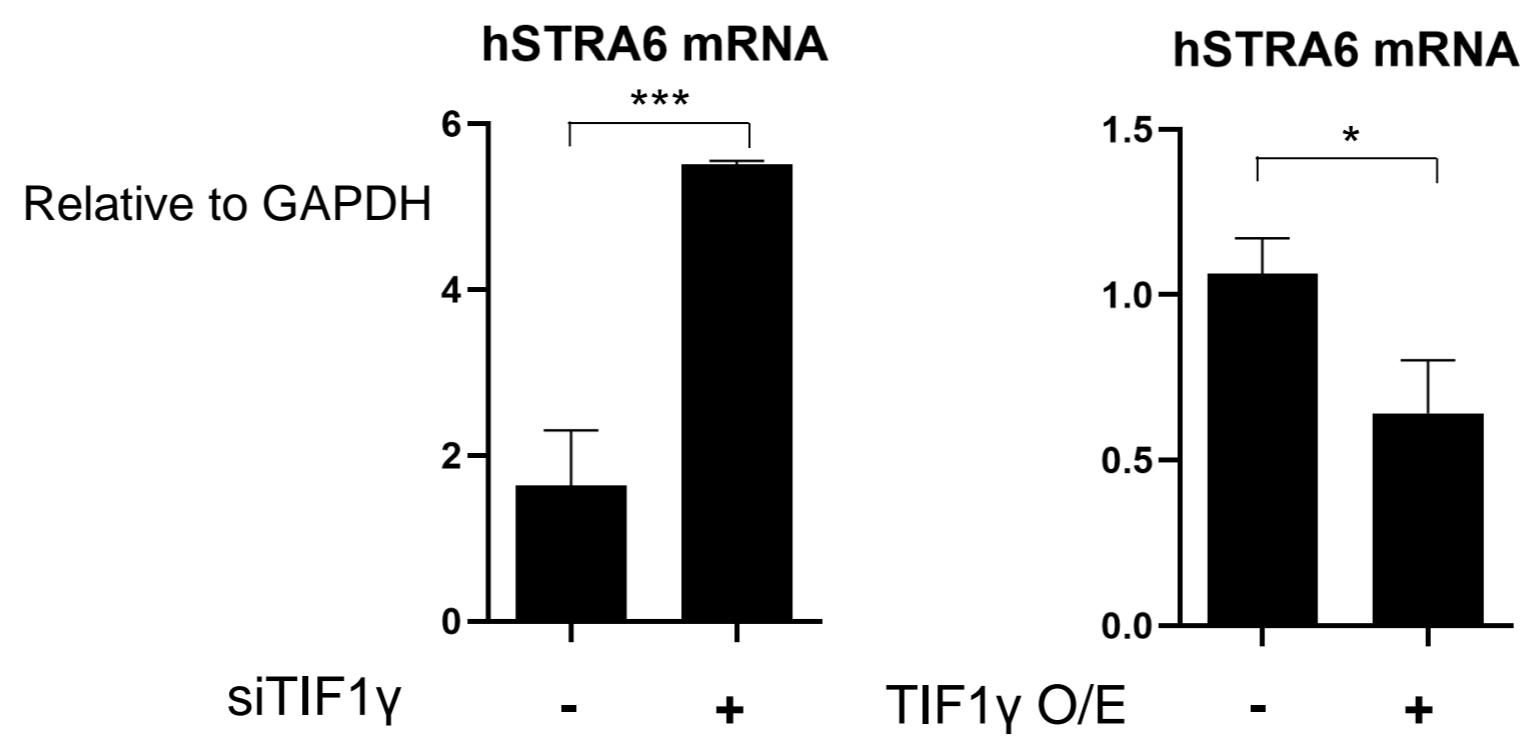
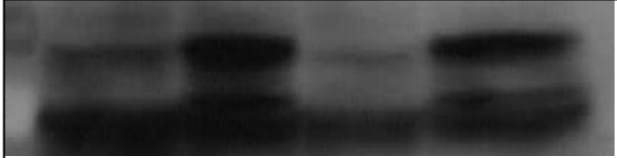


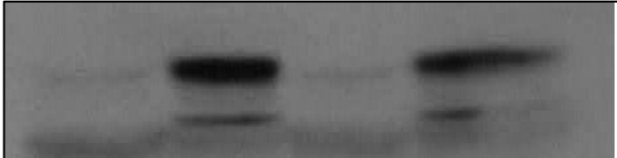
Figure S4

***293T cell line**

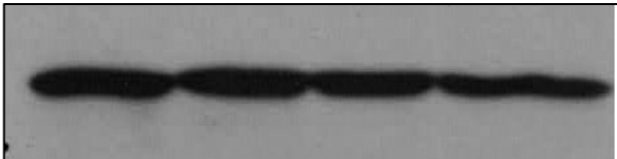
Retinol	-	-	+	+
STRA6 -myc/Flag	-	+	-	+



STRA6(N-term)



myc(c-term)



GAPDH