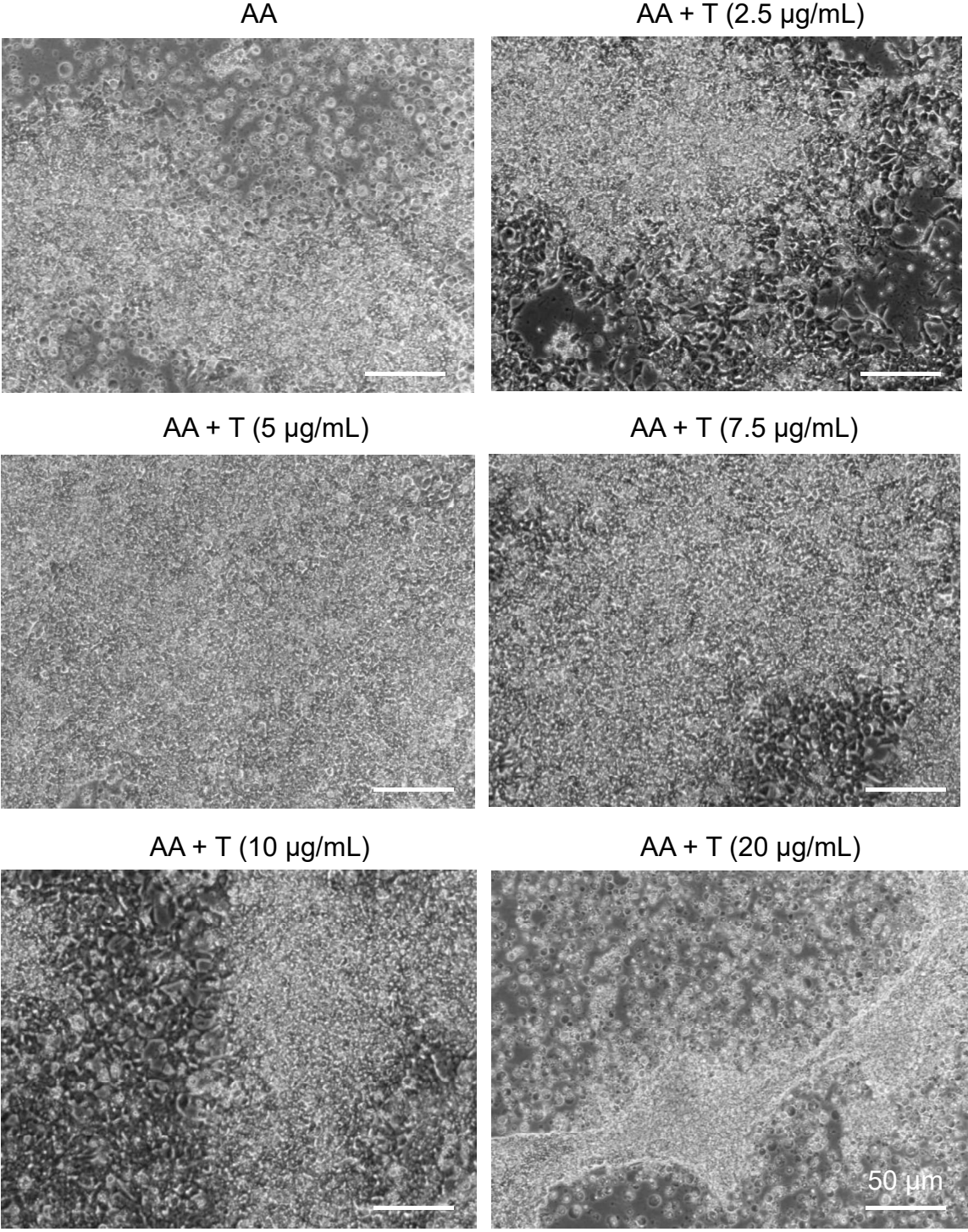
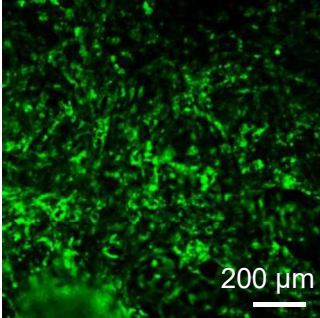


Supplementary Fig. 1 Optimization of transferrin dose for CM differentiation

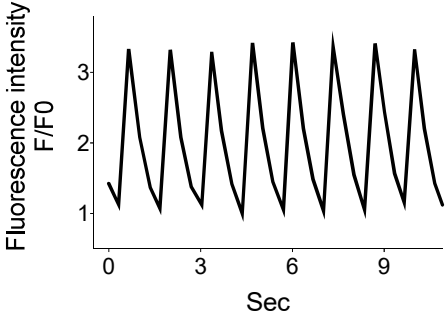


Supplementary Fig. 2 Simultaneous confocal imaging of Ca²⁺ transient in day 21 hiPSC-CMs

a.

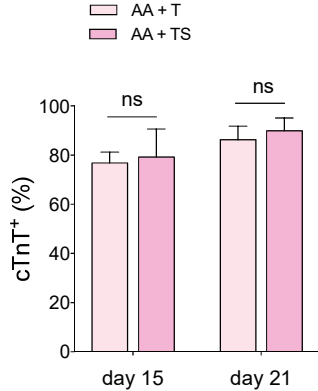


b.

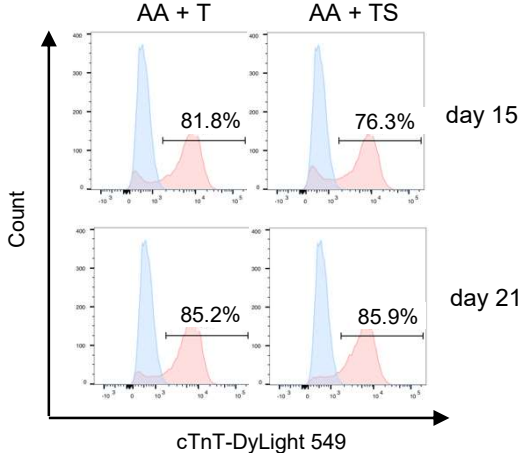


Supplementary Fig. 3 Assessment of addition of sodium selenite on cardiac differentiation

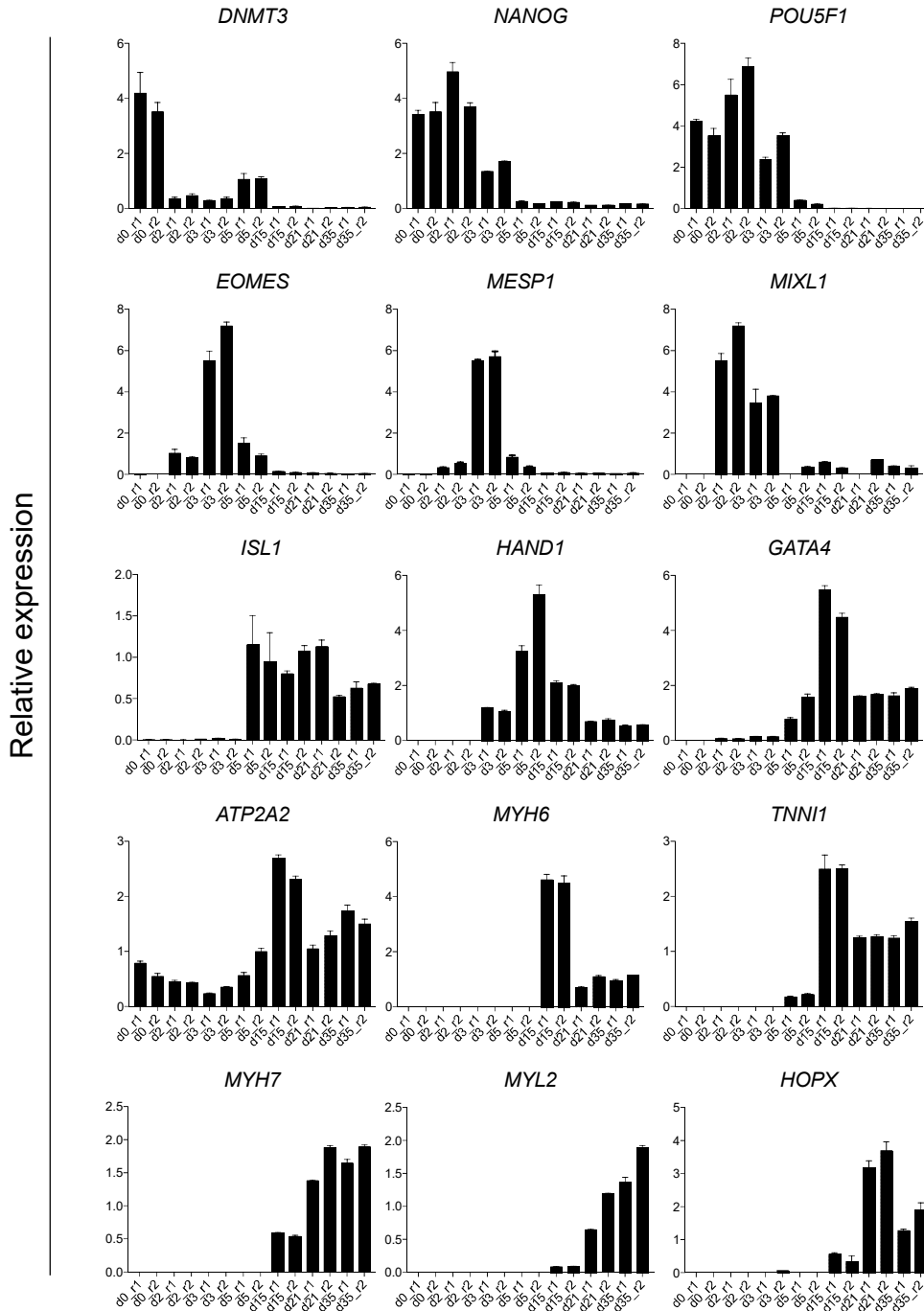
a.



b.

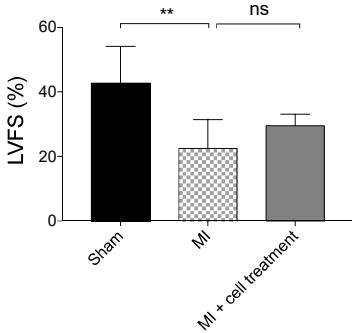


Supplementary Fig. 4 Q-PCR validation of stage-specific genes during hiPSC-derived cardiac differentiation according to the RNA-seq results



Supplementary Fig. 5 Quantitative cardiac function analysis of LVFS and LVEF on day 3 post-transplantation

a.



b.

