

## Supplementary Materials

### Supplementary Table S1

Table S1. Primers used in the study

Primer name	Primer sequences (5'->3')
$\beta$ -actin-F	AGAGCTACGAGCTGCCTGAC
$\beta$ -actin-R	AGCACTGTGTTGGCGTACAG
LANA-F	TTCCAGTTACCCACCCAAAA
LANA-R	TTGGATCTCGTCTTCCATCC
RTA-F	CACAAAAATGGCGCAAGATGA
RTA-R	TGGTAGAGTTGGGCCTTCAGTT
ORF45-F	GCTTTGCGGCTTAAGTTTGG
ORF45-R	CGCCTCCTCTGGTAGCGA
PAN RNA-F	CGACAAAGTGAGGTGGCATT
PAN RNA-R	CCGCACACCACTTTAGTCCAA
vIL-6-F	TAAAAAGCTCGCCGATGGCT
vIL-6-R	ACTGATTTTCCAACTCCGTCG
ORF57-F	AGGTCCCCCTCACCAGTAAA
ORF57-R	GAGGACGTGTGTTTTGACCG
ORF59-F	CGAGTCTTCGCAAAGGTT
ORF59-R	AAGGGACCAACTGGTGTGAG
ORF65-F	ATATGTCGCAGGCCGAATAC
ORF65-R	CCACCCATCCTCCTCAGATA
K8.1-F	AAAGCGTCCAGGCCACCACAGA
K8.1-R	GGCAGAAAATGGCACACGGTTAC
vIRF3-F	TGGTCTTCTCCGATGCTTCT
vIRF3-R	TCACCTACACAGTGGGTCATCAC
K12-F	TTCATGTCCCGGATGTGTTA
K12-R	TAATCGCCAACAGACAAACG
vCyclin-F	CATTGCCCGCCTCTATTATCA
vCyclin-R	ATGACGTTGGCAGGAACCA
IRF7-F	TGGTCCTGGTGAAGCTGGAA
IRF7-R	GATGTCGTCATAGAGGCTGTTGG
ISG15-F	ATGGGCTGGGACCTGACG
ISG15-R	GCCAATCTTCTGGGTGATCTG
IFIT1-F	GGAATACACAACCTACTAGCC
IFIT1-R	CCAGGTCACCAGACTCCTCA
IFIT2-F	GGGAACTATGCCTGGGTC
IFIT2-R	CCTTCGCTCTTTCAATTTGGTTTC
IFIT3-F	TGAGGAAGGGTGGACACAAGTAA
IFIT3-R	AGGAGAATTCTGGGTTGTTGGGCT
p62-F	ATCAGCTTCTGGTCCATCGG
p62-R	ATCGATATCAACTTCAATGCCAG

## **Supplementary Figure legends**

**Fig. S1 Cytotoxicity of KPT-8602 to HUVEC.** (A-D) HUVEC were treated with the indicated doses of KPT-8602 for 24, 48, 72 and 96 h. The cell viability was analyzed by MTT assay. \*, \*\*, and \*\*\* indicate P values of <0.05, <0.01, and <0.001, respectively; NS, not significant.

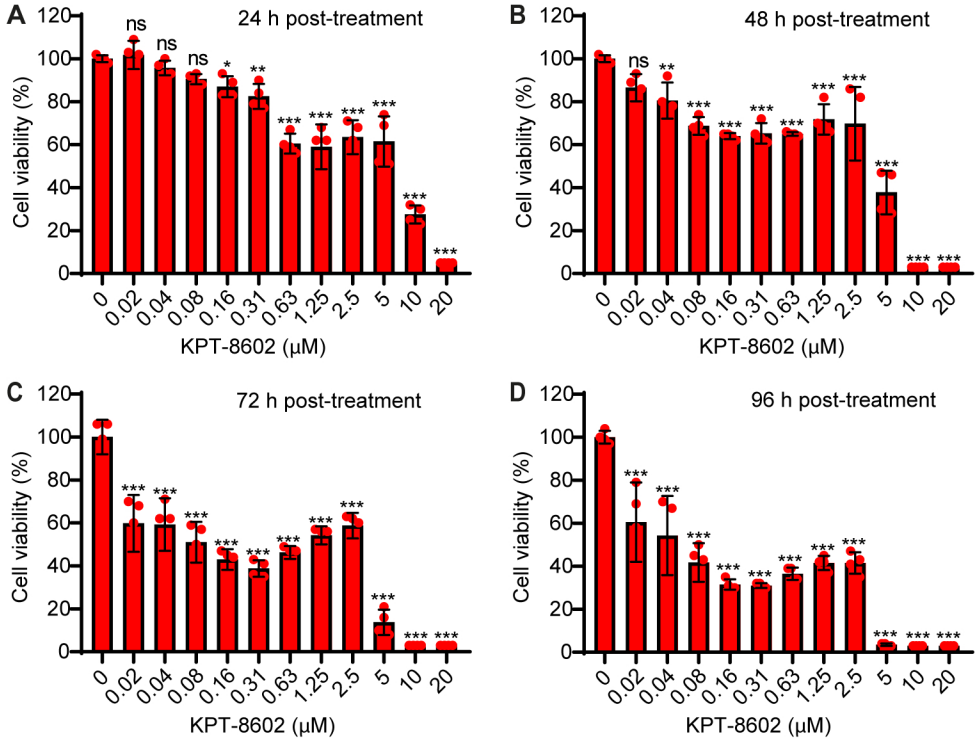
**Fig. S2 XPO1 inhibitor KPT-8602 treatment induces p62 nuclear retention.**

HUVEC were pre-treated with 0.5  $\mu$ M KPT-8602 or vehicle control DMSO for 1 h and then infected with KSHV for 12 h in the presence of KPT-8602 or DMSO. Cells were fixed and stained for p62. Nuclei were stained with DAPI. Images were taken with a confocal microscopy (magnification  $\times$ 600).

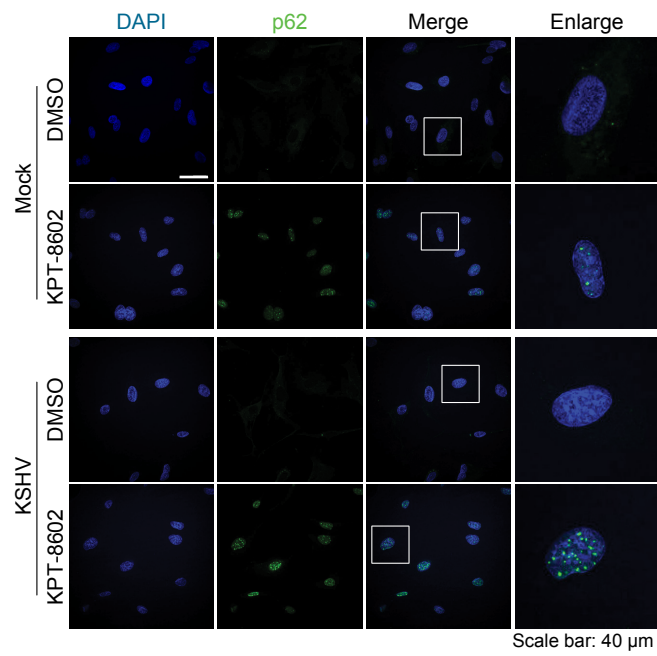
**Fig. S3 XPO1 knockdown induces p62 nuclear retention.** HUVEC with XPO1

knockdown were infected with KSHV for 12 h. Cells were fixed and stained for p62. Nuclei were stained with DAPI. Images were taken with a confocal microscopy (magnification  $\times$ 600).

Figure S1



**Figure S2**



**Figure S3**

