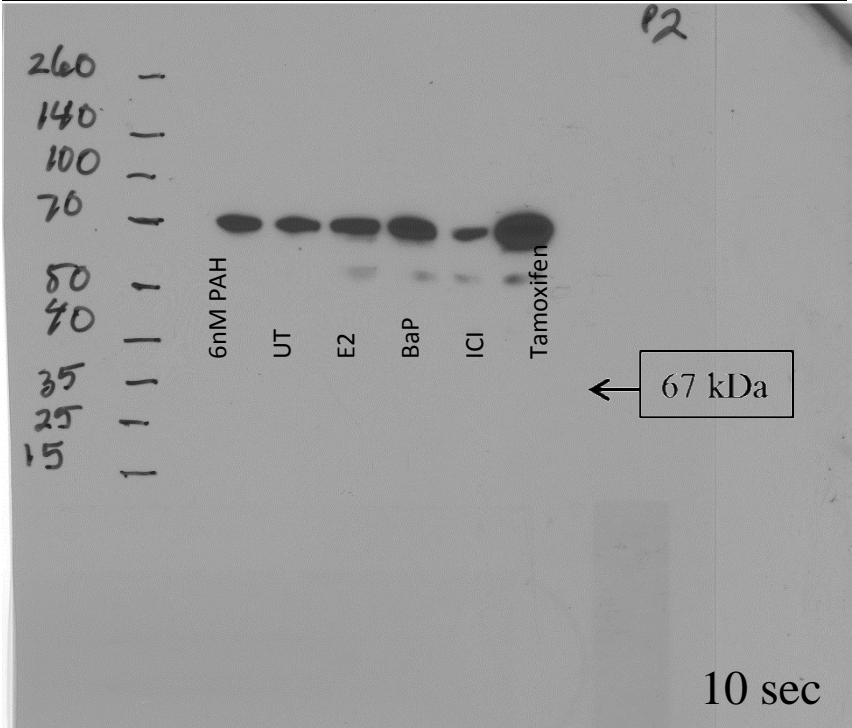


Supplementary Material, Western Immunoblot Scans

FIGURE 1B: MCF-7 cell line, Estrogen Receptor alpha (ERa, 67kD):



Accompanying Glyceraldehyde 3-phosphate dehydrogenase (GAPDH, 36kD) control:

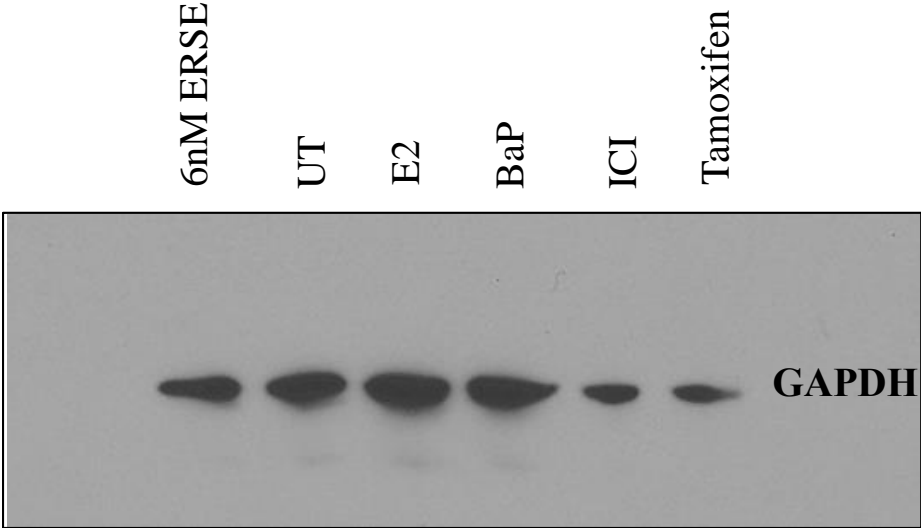


FIGURE 1C: MCF-7 cell line, Aryl hydrocarbon receptor (AhR, 100kD), Accompanying Glyceraldehyde 3-phosphate dehydrogenase (GAPDH, 36kD) control:
Samples left to right: Untreated (0nM PAH mixture), 6nM PAH mixture, 30nM PAH mixture, 300nM PAH mixture, 1uM BaP, 10uM BaP, 100nM BkF, 1uM BkF, 1nM BPA

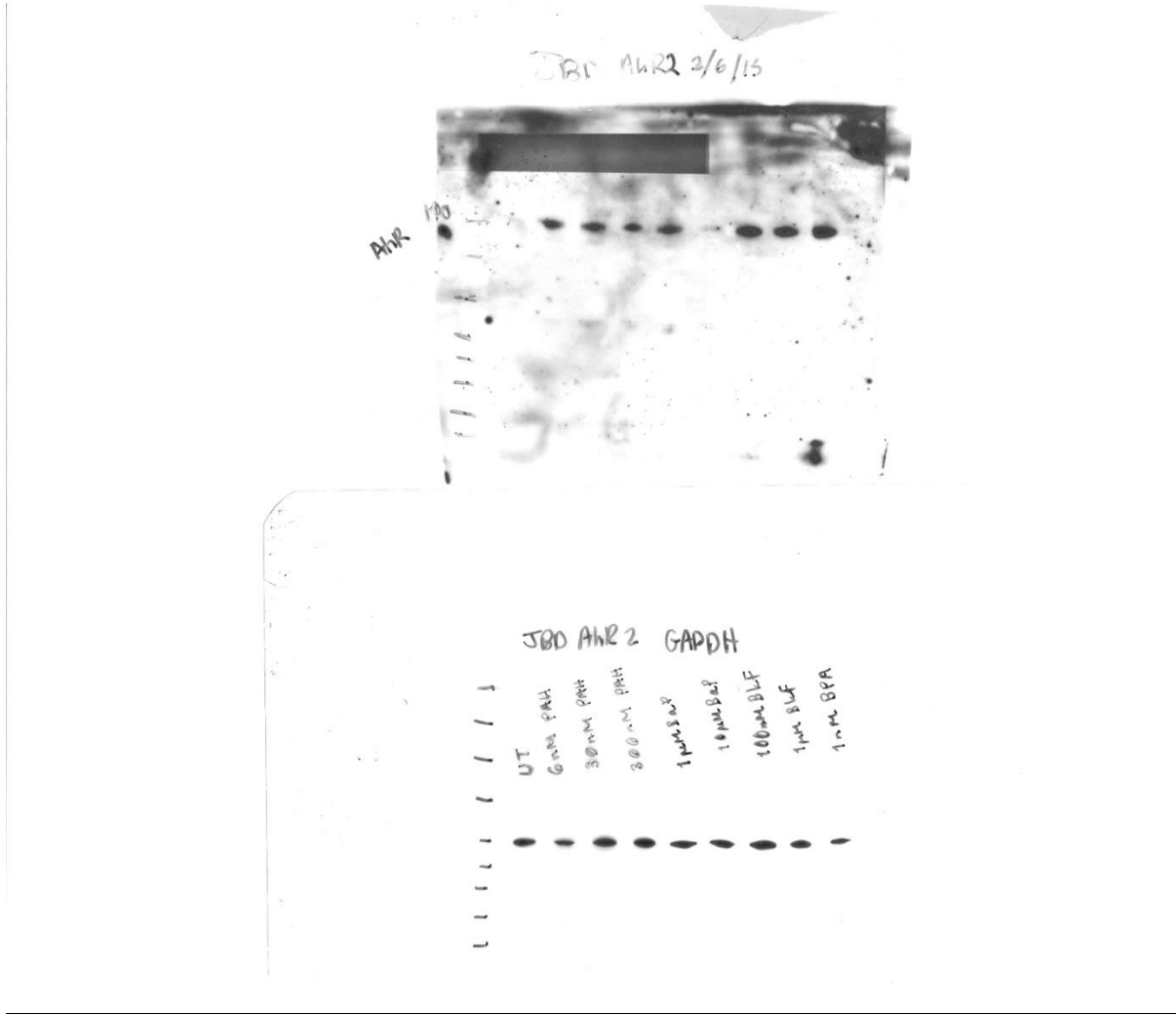
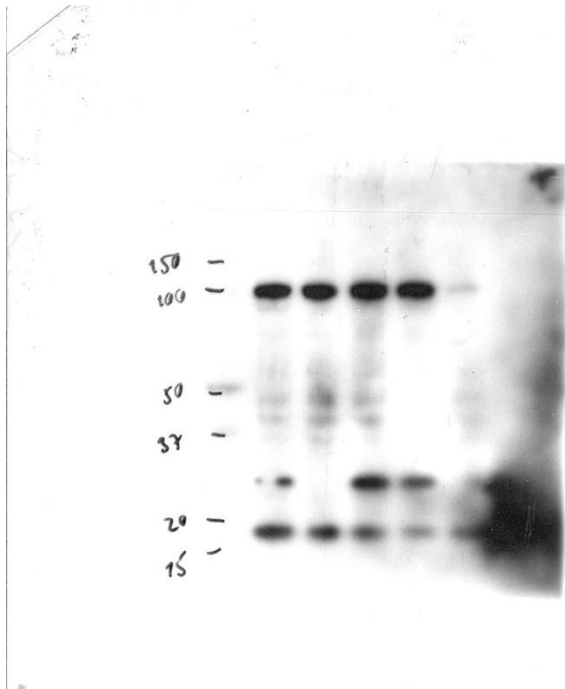


FIGURE 1E: T47D cell line, Aryl hydrocarbon receptor (AhR, 100kD):

Samples left to right: Untreated (0nM PAH mixture), 6nM PAH mixture, 30nM PAH mixture, 300nM PAH mixture, 1uM BaP



Accompanying Glyceraldehyde 3-phosphate dehydrogenase (GAPDH, 36kD) control:

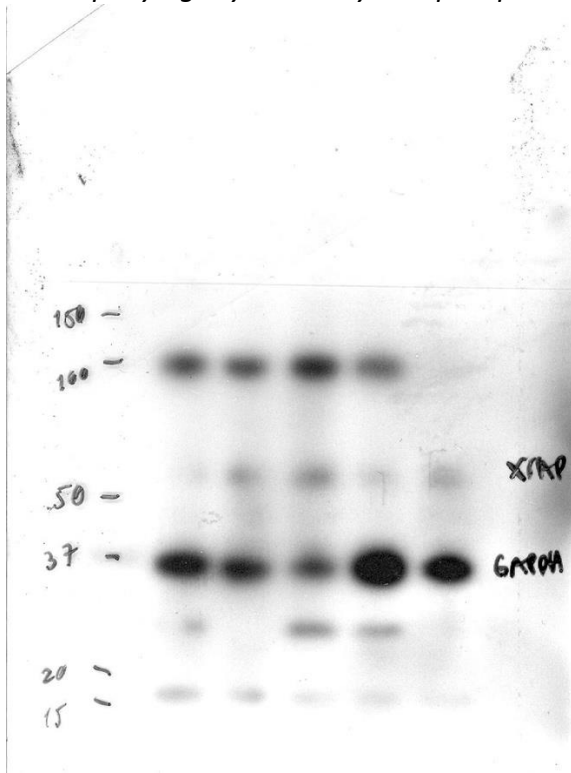
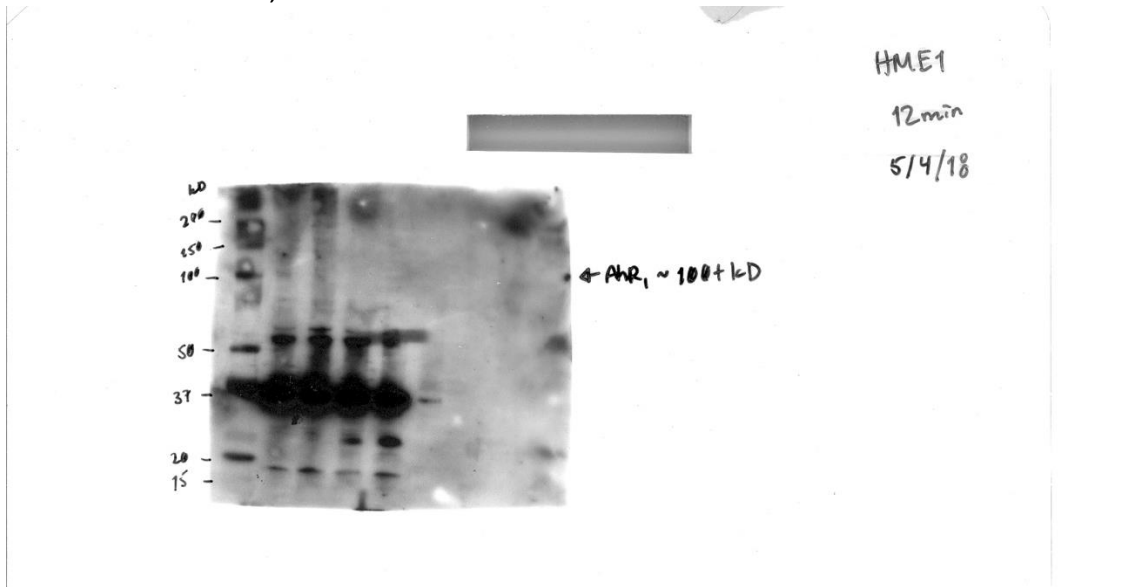


FIGURE 2A: HME1 cell line, Aryl hydrocarbon receptor (AhR, 100kD):

Samples left to right: Untreated (0nM PAH mixture), 6nM PAH mixture, 30nM PAH mixture, 300nM PAH mixture, 1uM BaP



Accompanying Glyceraldehyde 3-phosphate dehydrogenase (GAPDH, 36kD) control:

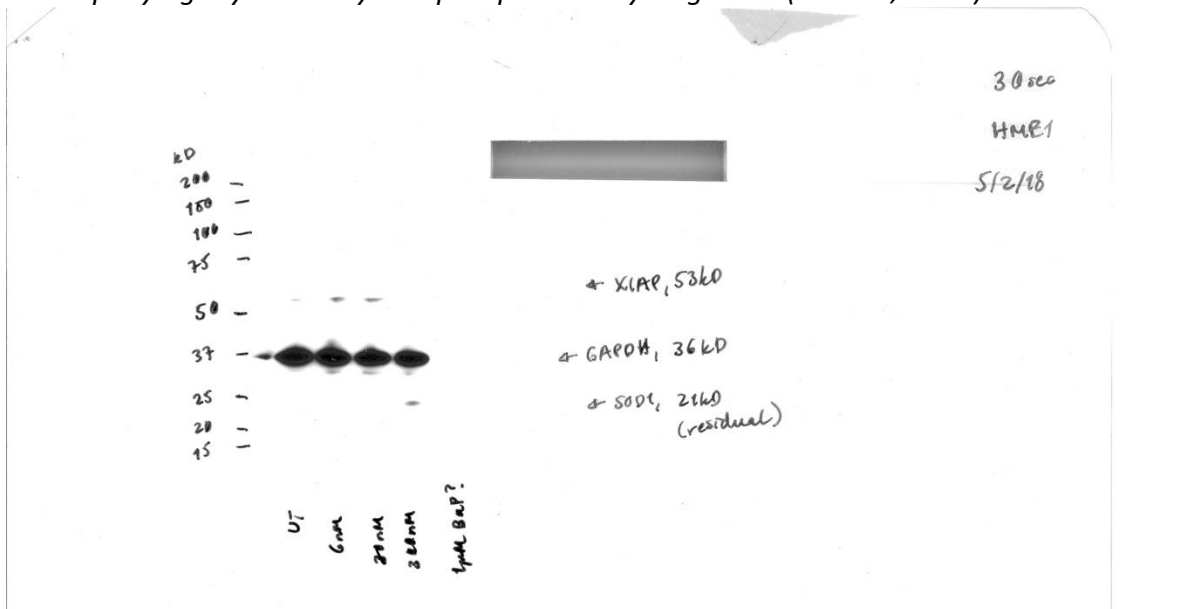
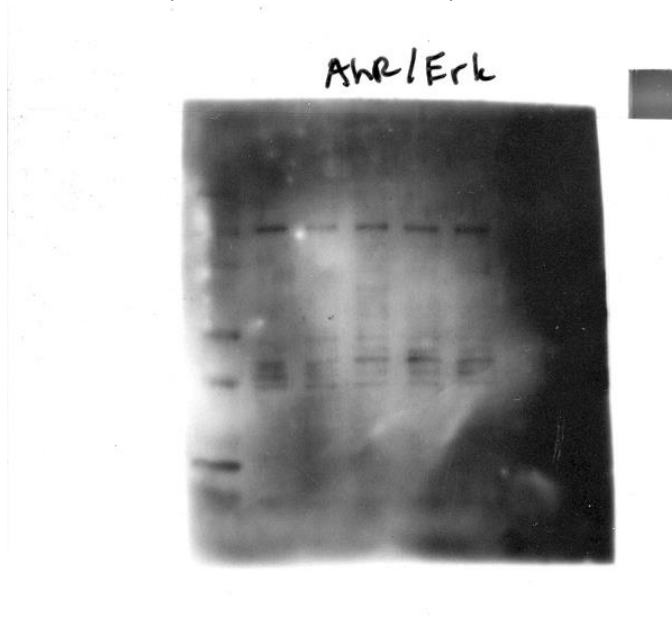


FIGURE 2B: MDA-MB231 cell line, Aryl hydrocarbon receptor (AhR, 100kD):

Samples left to right: Ladder/marker, Untreated (0nM PAH mixture), 6nM PAH mixture, 30nM PAH mixture, 300nM PAH mixture, 1uM BaP



Accompanying Glyceraldehyde 3-phosphate dehydrogenase (GAPDH, 36kD) control:

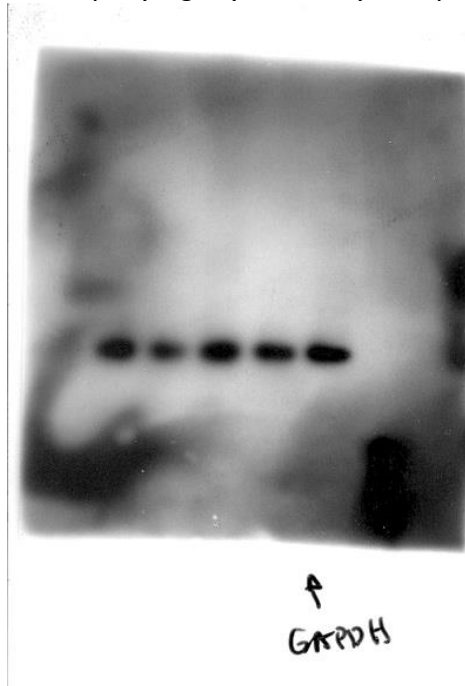


FIGURE 2C: SUM149 cell line, Aryl hydrocarbon receptor (AhR, 100kD), *Accompanying Glyceraldehyde 3-phosphate dehydrogenase (GAPDH, 36kD) control:*
Samples left to right: Untreated (0nM PAH mixture), 6nM PAH mixture, 30nM PAH mixture, 300nM PAH mixture, 1uM BaP, 10uM BaP, 100nM BkF, 1uM BkF, 1nM BPA

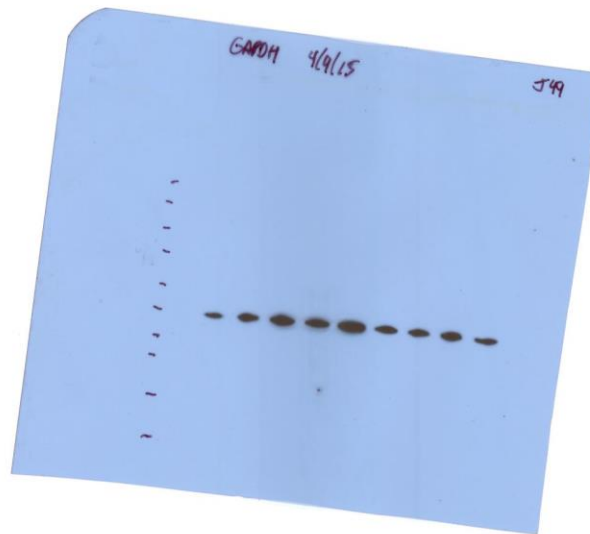
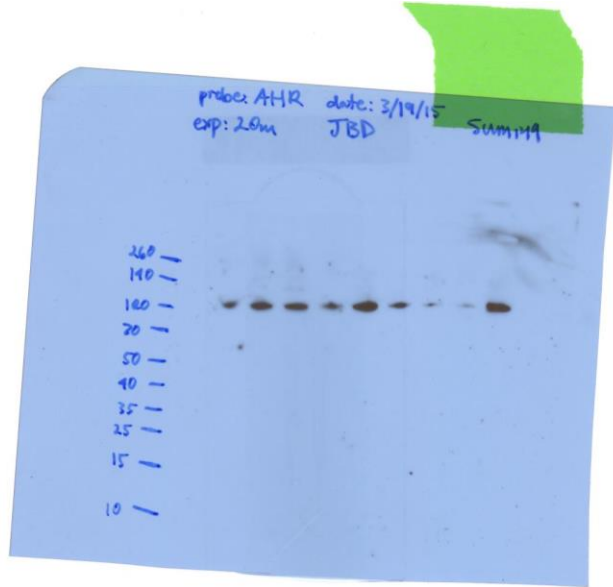
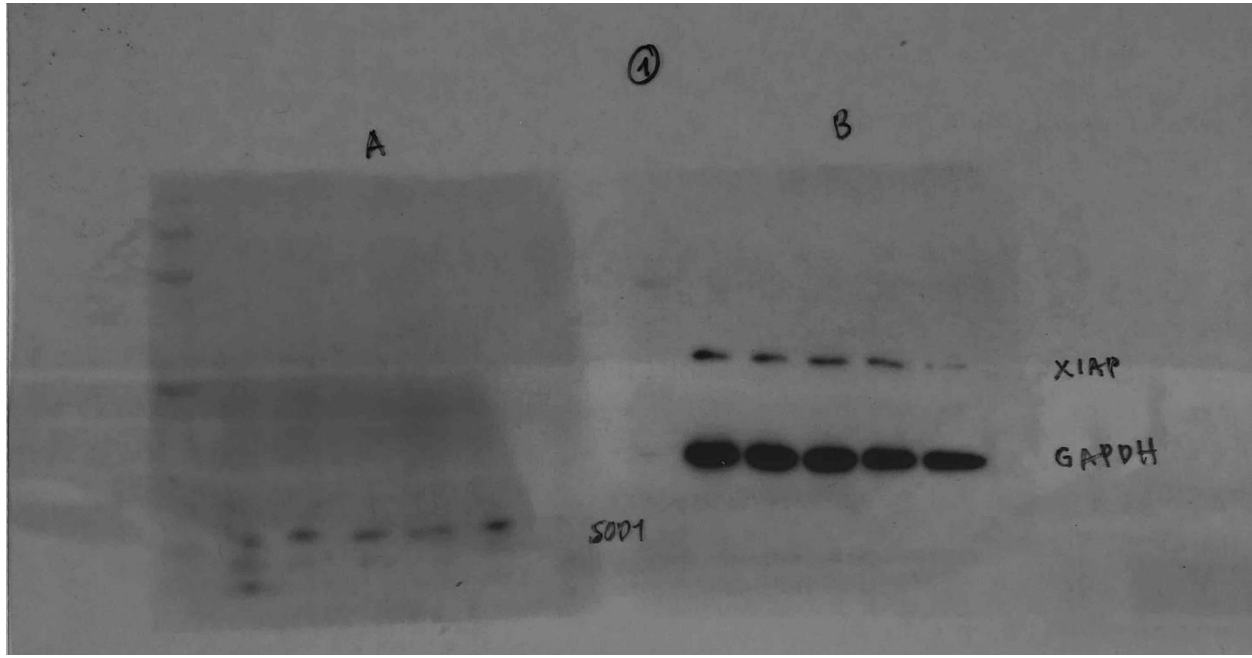


FIGURE 3D: SUM149 Tumor Organoid, X-linked inhibitor of apoptosis protein (XIAP, 53kD), superoxide dismutase (SOD1, 23kD):

Samples left to right: Untreated (0nM PAH mixture), 6nM PAH mixture, 30nM PAH mixture, 300nM PAH mixture, 1uM BaP



Accompanying Glyceraldehyde 3-phosphate dehydrogenase (GAPDH, 36kD) control:

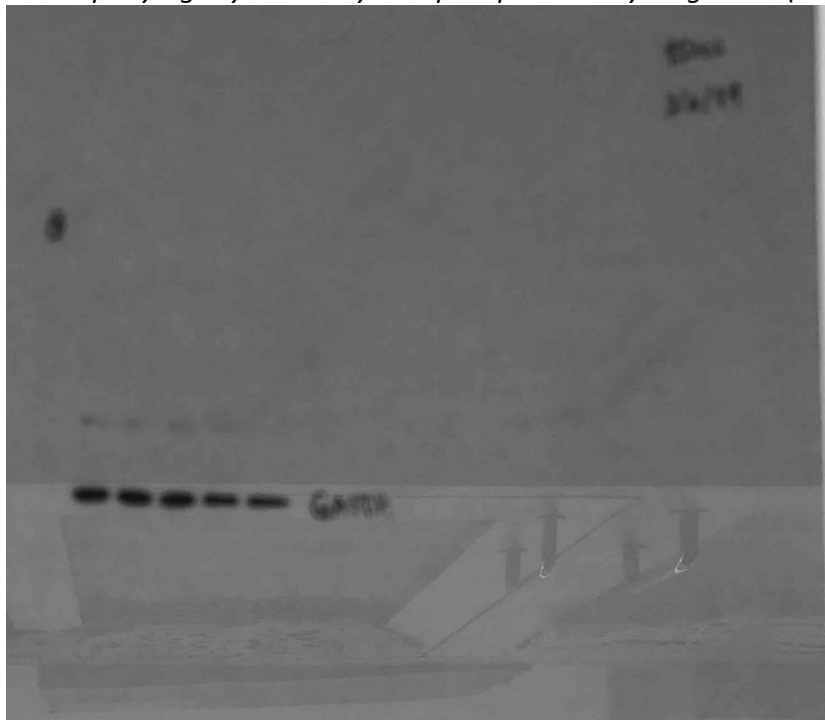


FIGURE 4A: MCF cell line, -7 X-linked inhibitor of apoptosis protein (XIAP, 53kD), MCF-7 superoxide dismutase (SOD1, 23kD), *Accompanying Glyceraldehyde 3-phosphate dehydrogenase (GAPDH, 36kD) control:*

Samples left to right: Untreated (0nM PAH mixture), 6nM PAH mixture, 30nM PAH mixture, 300nM PAH mixture, 1uM BaP

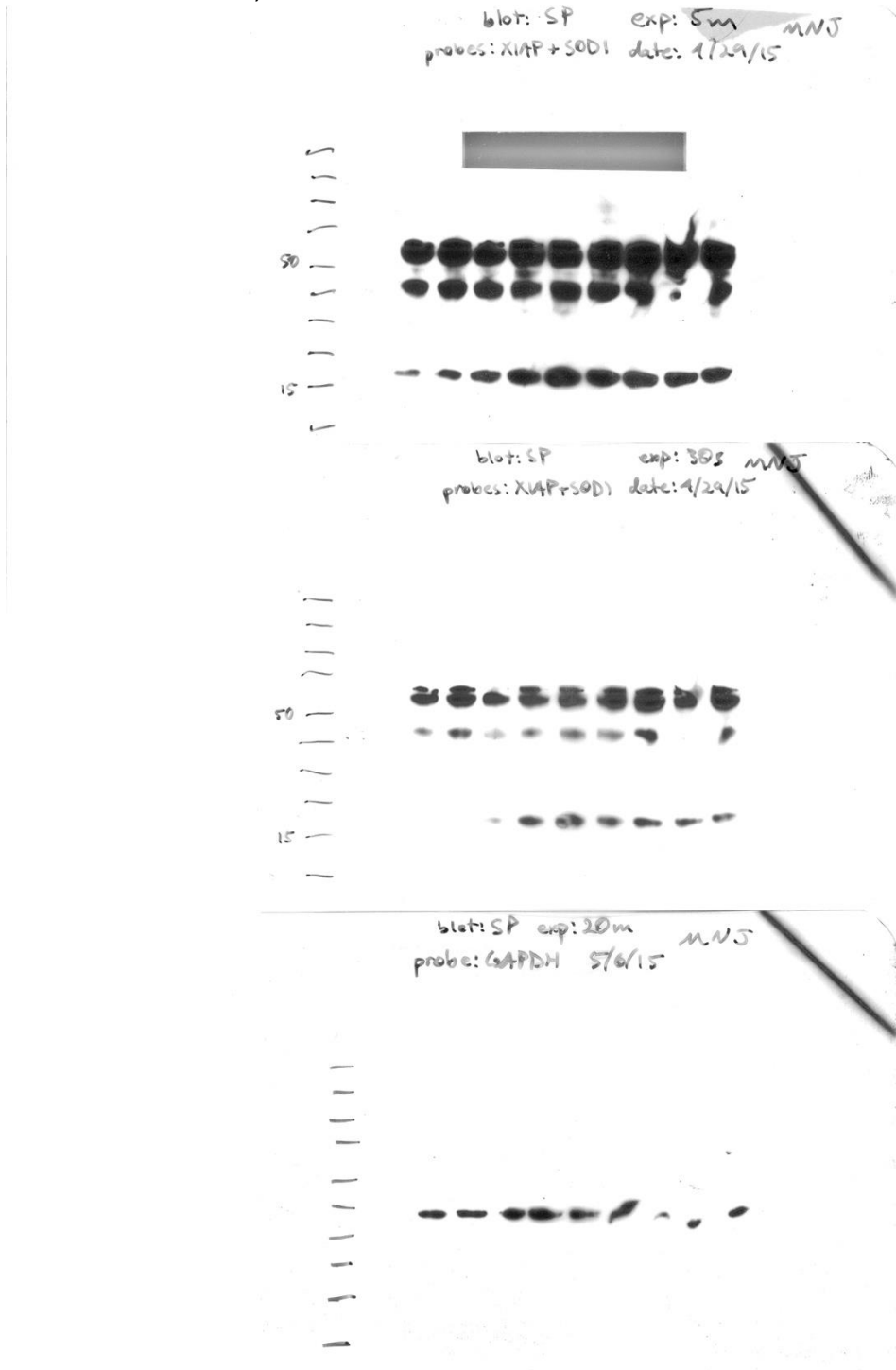
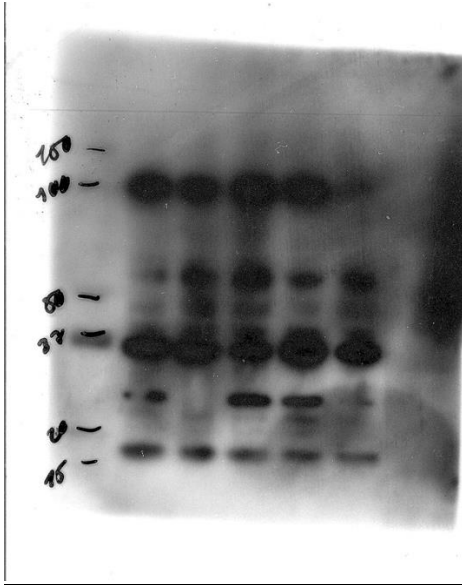
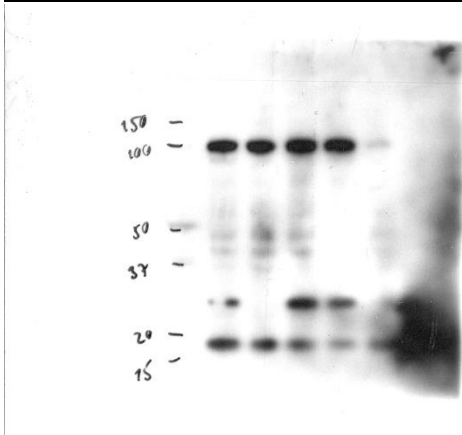


FIGURE 4B: T47 cell line, X-linked inhibitor of apoptosis protein (XIAP, 53kD):

Samples left to right: Untreated (0nM PAH mixture), 6nM PAH mixture, 30nM PAH mixture, 300nM PAH mixture, 1uM BaP



T47D superoxide dismutase (SOD1, 23kD):



Accompanying Glyceraldehyde 3-phosphate dehydrogenase (GAPDH, 36kD) control:

