

# **Supplemental Material**

**Table S1. Odds ratios for post-capillary PH from univariate logistic regression.**

	OR (95% CI)	P-value
Males	0.69 [ 0.38-1.28]	0.242
Age ≥ 59 years	4.13 [2.34-7.27]	< 0.001
BMI ≥ 30 kg/m <sup>2</sup>	5.38 [ 3.11-9.31]	<0.001
<b>Medical history of</b>		
Diabetes	7.61 [4.39-13.21]	<0.001
Atrial fibrillation, any	7.27 [3.98-13.27]	<0.001
Hypertension	5.00 [2.94-8.53]	<0.001
Dyslipidaemia	3.42 [1.86-6.26]	<0.001
Smoking > 1 pack year	1.15 [0.69-1.92]	0.594
Valvular surgery	21.1 [6.78-65.95]	<0.001
Coronary artery disease	4.83 [2.49-9.35]	<0.001
Left heart disease	7.01 [3.79-12.95]	<0.001
<b>ECG</b>		
Left atrial dilatation	0.49 [0.18-1.27]	0.141
SV1+RV6 per mm	1.08 [1.04-1.12]	<0.001
<b>Echocardiography</b>		
Left atrial dilation	9.19 [5.16-16.39]	<0.001

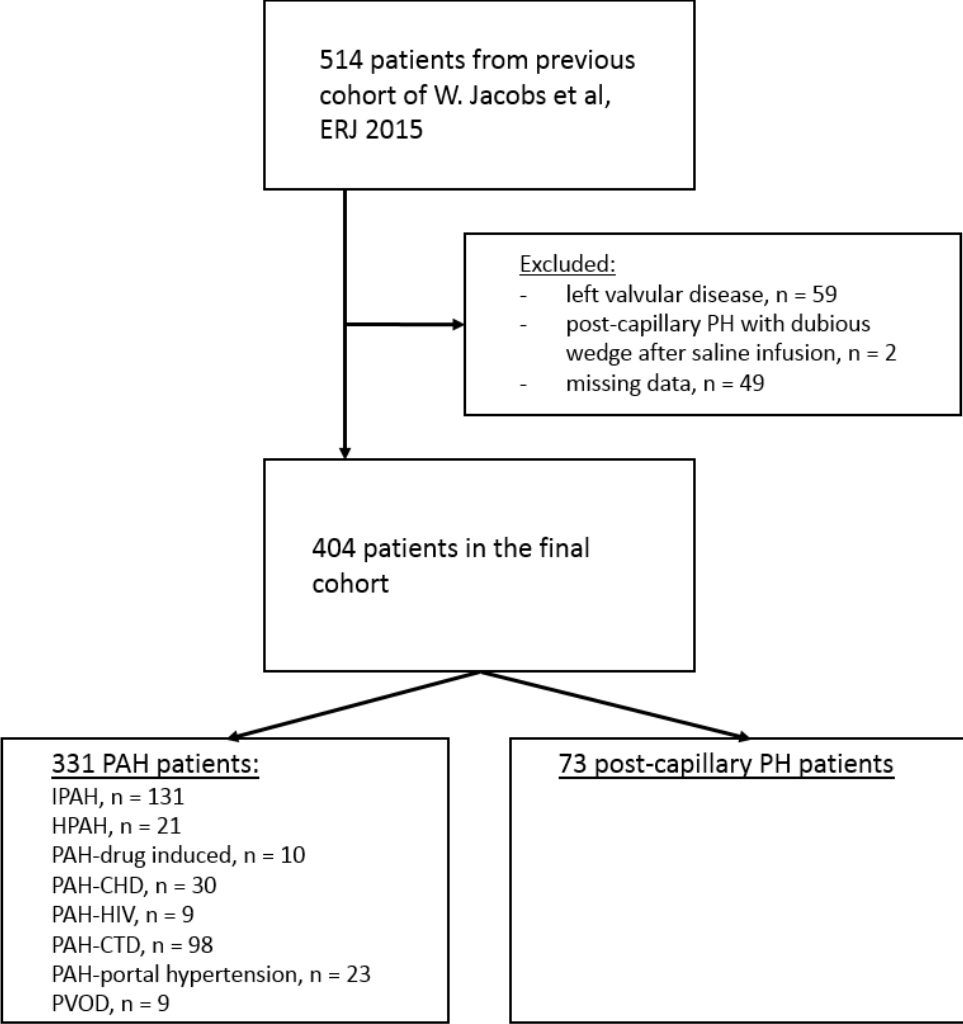
BMI: body mass index, SV1+ RV6: sum of S wave in V1 and R wave in V6 on ECG (in mm),  
Atrial fibrillation, any: paroxysmal or permanent atrial fibrillation

**Table S2. Sensitivity, specificity, positive predictive value, negative predictive value and accuracy at various cut-off points using the OPTICS risk scoring system.**

Risk score	Sensitivity	Specificity	PPV	NPV	Accuracy	Probability
≥ 0	100	0	17	Na	17	0.00
≥ 13	100	37	25	100	48	0.01
≥ 26	97	51	28	99	58	0.03
≥ 39	92	71	39	98	74	0.07
≥ 52	89	82	50	97	83	0.15
≥ 65	75	93	70	95	90	0.31
≥ 78	58	97	79	92	90	0.53
≥ 91	38	98	83	89	88	0.74
<b>≥ 104</b>	<b>23</b>	<b>100</b>	<b>100</b>	<b>86</b>	<b>87</b>	<b>0.88</b>
≥ 117	16	100	100	86	86	0.95
≥ 130	9	100	100	84	85	0.98
≥ 143	6	100	100	84	84	0.99

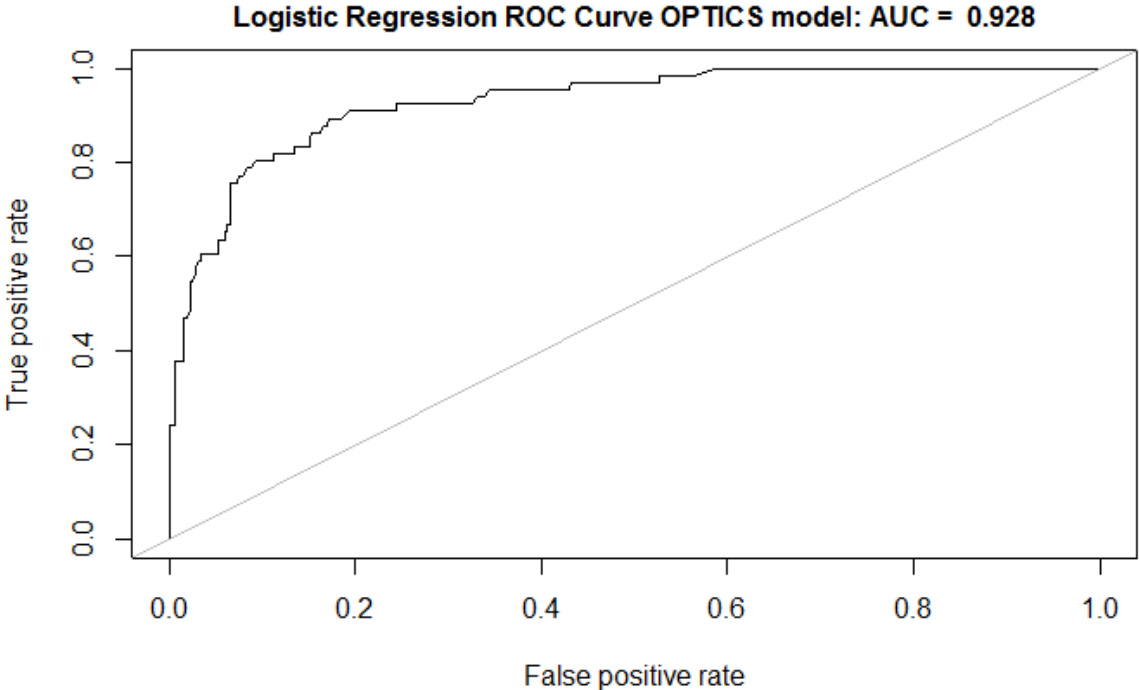
Data are presented as %. NA: not applicable. PPV: positive predictive value, NPV: negative predictive value

**Figure S1. Flow chart representing patients' numbers and study methods of the development cohort.**



PH: Pulmonary Hypertension, PAH: Pulmonary Arterial Hypertension, IPAH: idiopathic pulmonary arterial hypertension, HPAH: hereditary pulmonary arterial hypertension, PAH-CHD: PAH due to congenital heart disease, PAH-CTD: PAH due to connective tissue disease, PVOD: pulmonary veno-occlusive disease, PCWP: wedge pressure, LVEDP: left ventricular end diastolic pressure

**Figure S2. Receiver operator characteristic curve of the multivariate risk model for prediction of post-capillary PH in a population at risk for pre-capillary PH.**



**Figure S3. Pyramid graph from the development cohort of patients with post-capillary PH and pre-capillary-PH, divided according to the OPTICS risk score outcomes of individual patients.**

