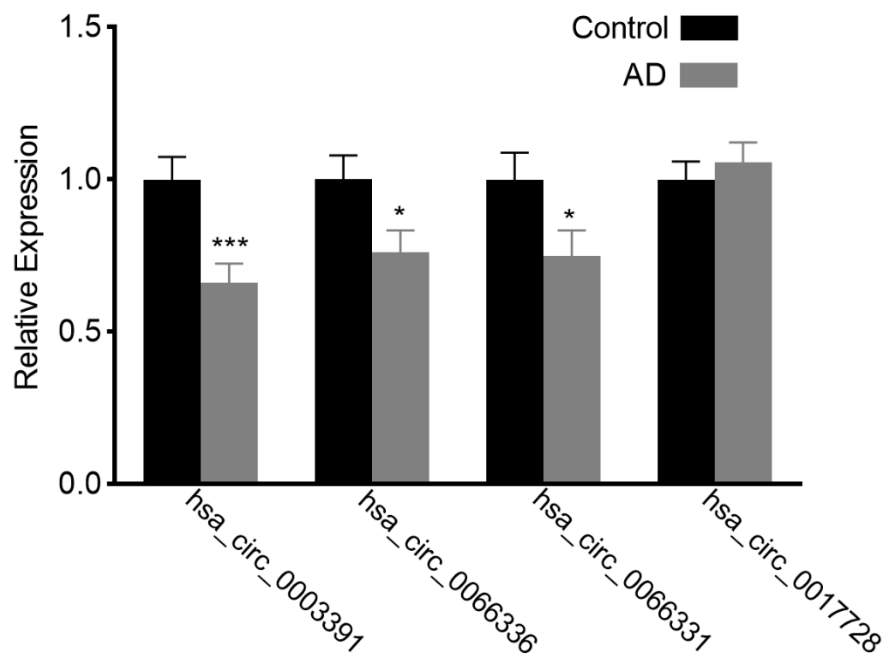
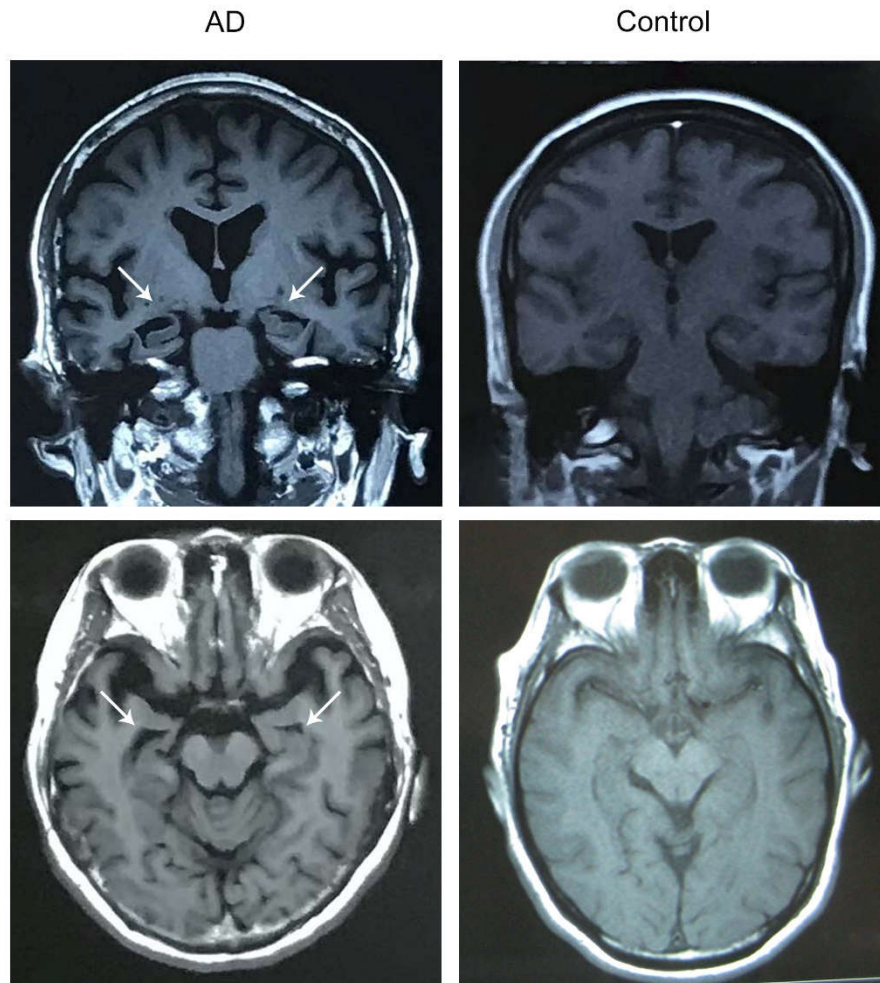


Supplementary Figures



Supplementary Figure 1. Relative change in gene expression were determined by using a $2^{-\Delta\Delta CT}$ method. * $p < 0.05$, *** $p < 0.001$



Supplementary Figure 3. Typical neuroimaging of the MRI showed that the hippocampus with the patient suffering from AD displayed an obvious atrophy compared with age-matched healthy controls.